

Table Content

- I. INTRODUCTION..... 2
- II. COMPATIBLE VERSION..... 2
- III. ENVIRONMENT SETUP 2
- IV. LIVE VIEW 5
- V. PLAYBACK..... 10

I. Intruction

NUUO MainConsole (For NVR IP+, Hybrid NDVR, DVR card), NUUO Crystal and Gallagher Access Control System has been integrated, coporating to provide an interface between the two platforms, to provide LiveView and Playback fo Gallagher events.

NUUO – Gallagher interface allows Liveview/Playback video from NUUO server to be accessed within the GallagherSoftware.

Live video can be instantaneously displayed when an alarm or event activation occurs. Playback enable users access the recorded video from NUUO server.

II. Compatible Version

NUUO Mainconsole v5.0 and above

NUUO Crystal v3.0 and above

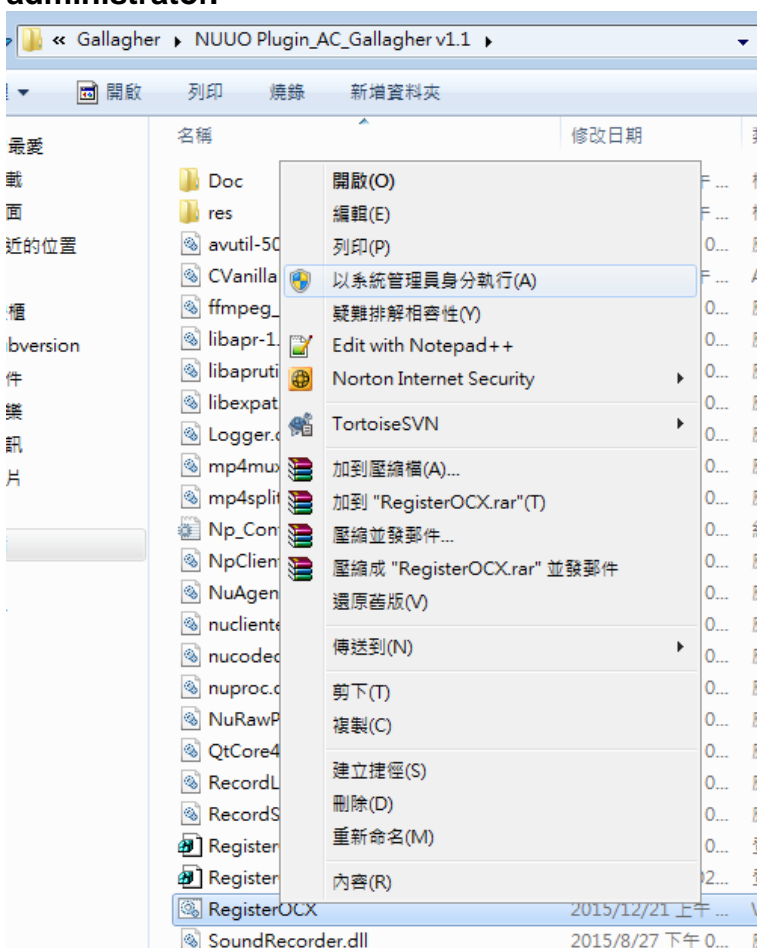
Gallagher Command Centre v7.10 and above

III. Environment Setup

Step 1: Download NUUO Plugin_AC_Gallagher v1.2 .zip from NUUO [website](#) and unzip the file.

Step 2: Register CVanillaDVR.ocx.

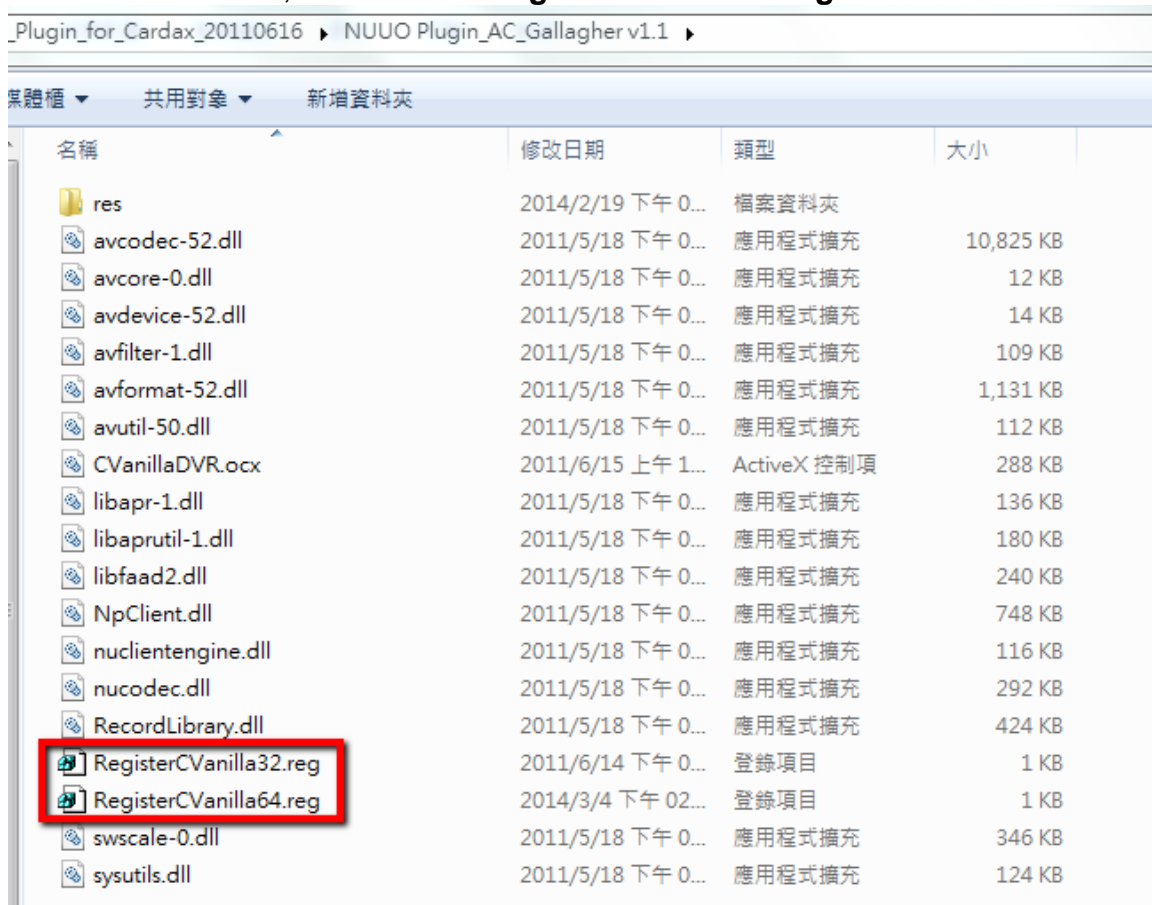
Under NUUO Plugin_AC_Gallagher folder, right click RegisterOCX and execute the exe file as administrator.



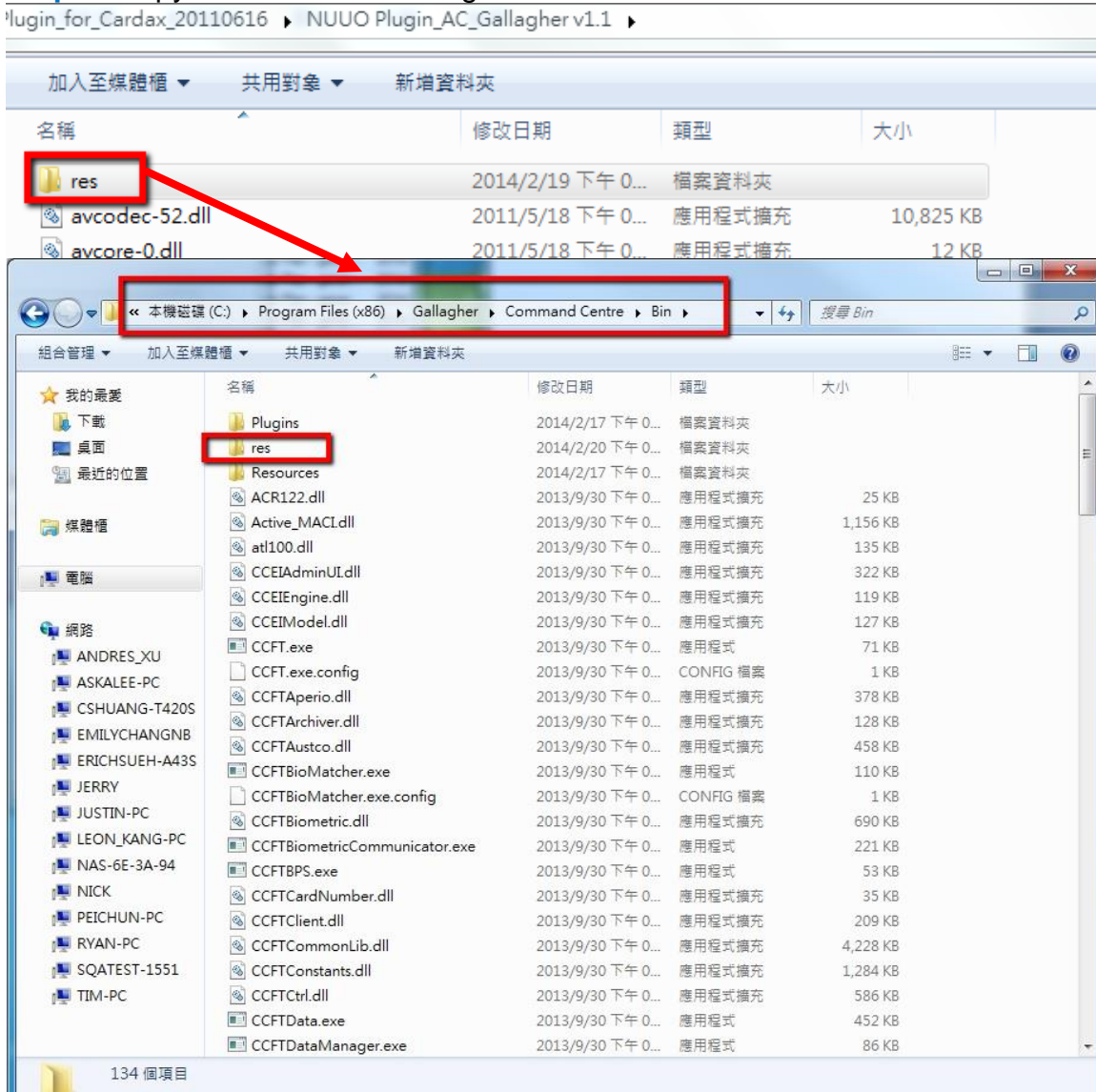
Step 3: Execute RegisterCVanilla32. reg.

For Windows 32 bit, double click “RegisterCVanilla32.reg.”

For Windows 64 bit, double click “RegisterCVanilla64.reg.”



Step 4: Copy “res” folder to Gallagher Command Centre installation folder.



Step 5: Install Gallagher Command Centre Software with selecting “Server” as the type of installation.

Step 6: Put the Command Centre License file into the C:\Windows folder.

Note: NUUO Mainconsole v5.0, NUUO Crystal v3.0, Command Centre and Gallagher Controller must be in same LAN.

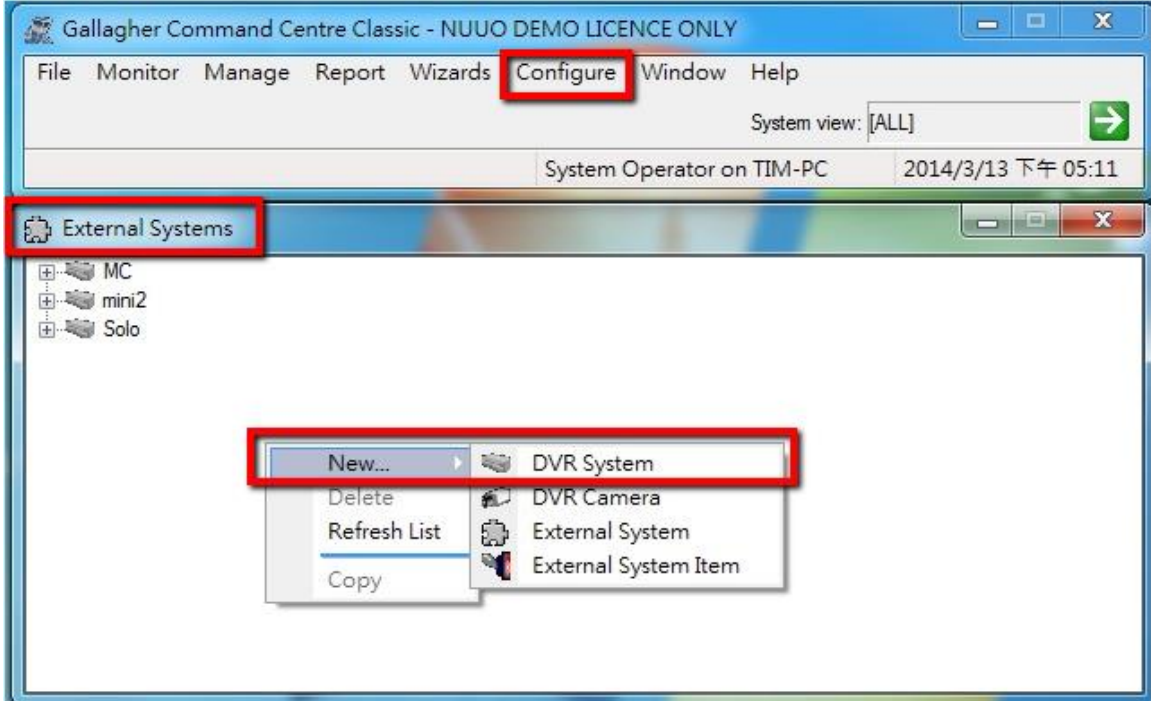
Step 7: Open Command Centre Classic



IV. Live view

Step 1: Add DVR System

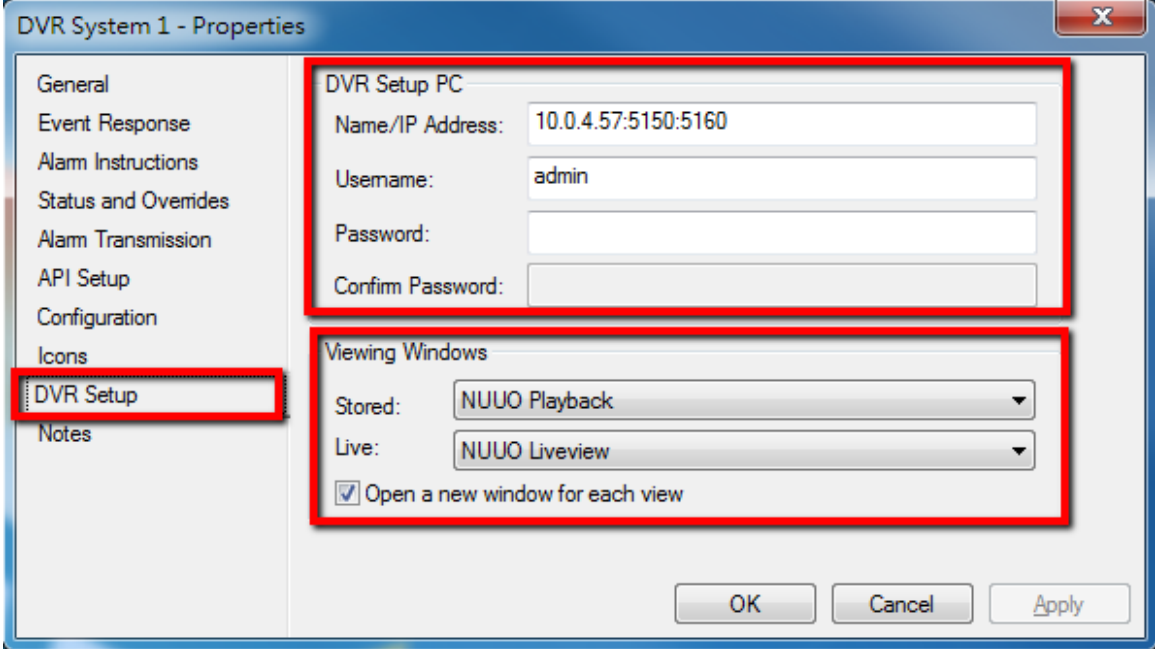
Configure → External Systems → Right click “New” → DVR System



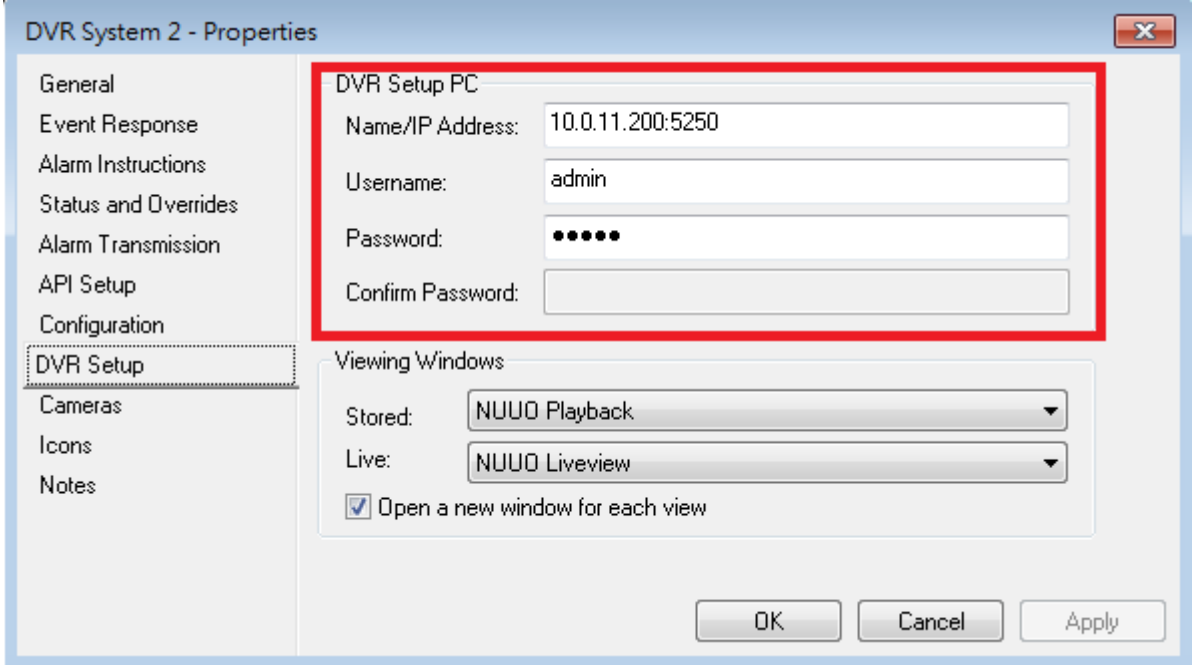
Step 2: Configure DVR System

Double click on DVR System List → DVR Setup → Insert NUUO Server’s “IP address”, “Username” and “Password” → Viewing Windows → Select “NUUO Playback and Liveview “

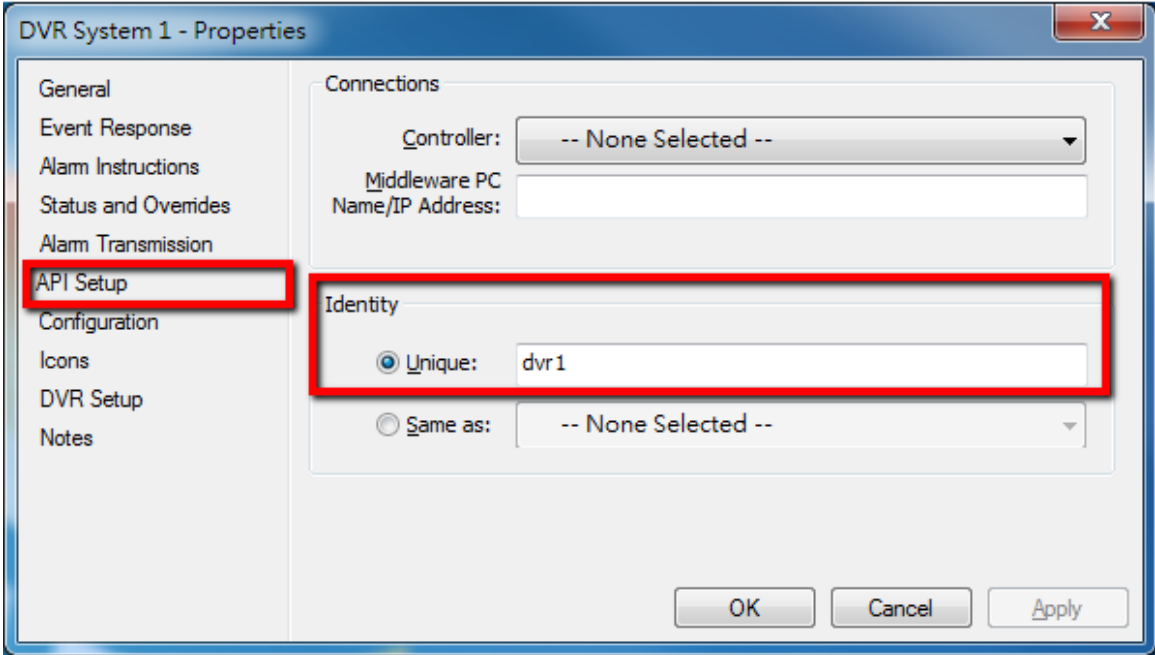
Mainconsole: IP address with Liveview port & Playback port



Crystal: IP address with management service port

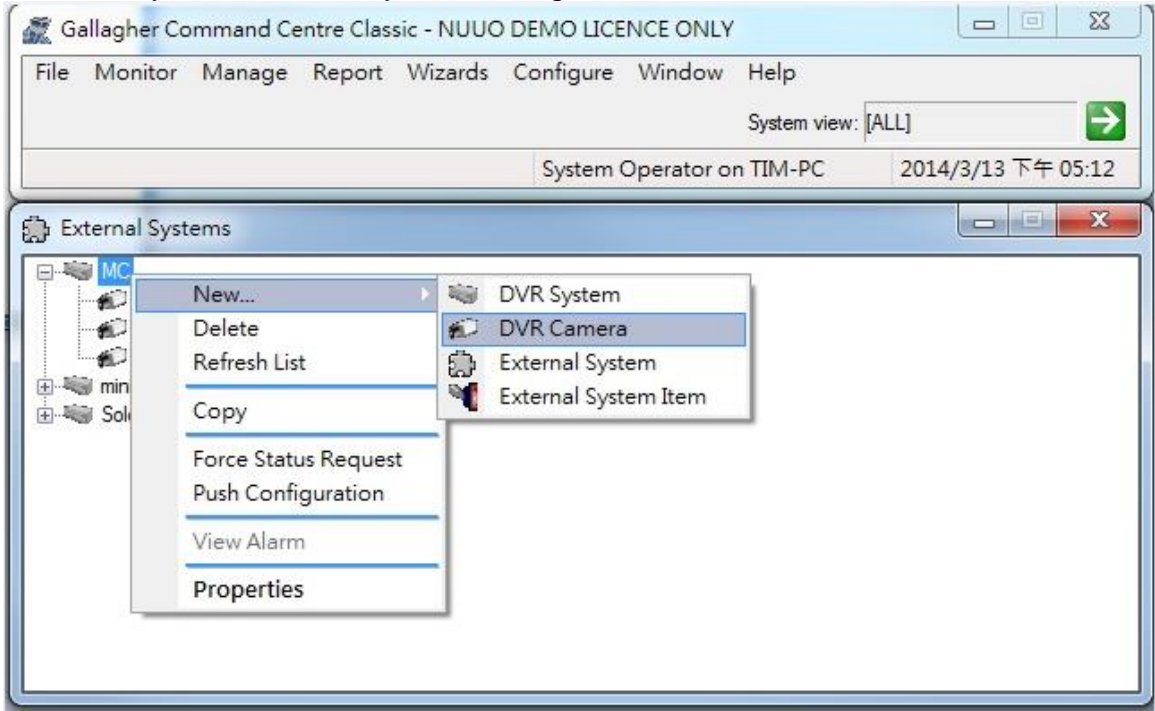


Step 3: API Setup → Identity → Unique → Insert a name for NUUO Mainconsole or NUUO Crystal



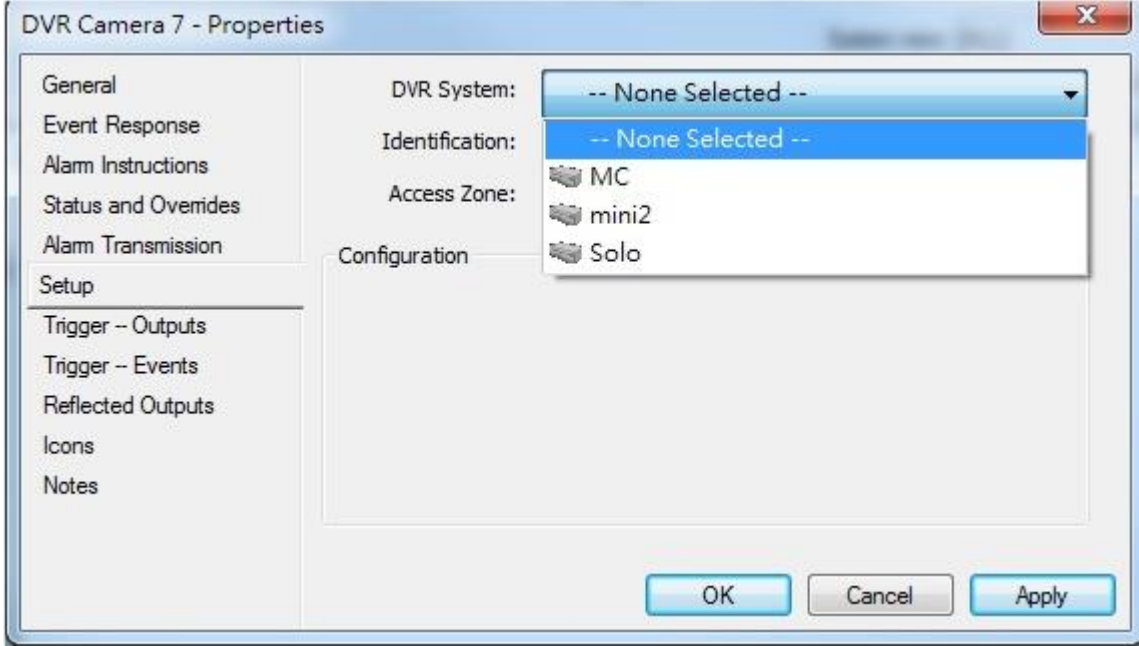
Step 4: Add new DVR Camera

External System → DVR System → Right click “New” → DVR Camera

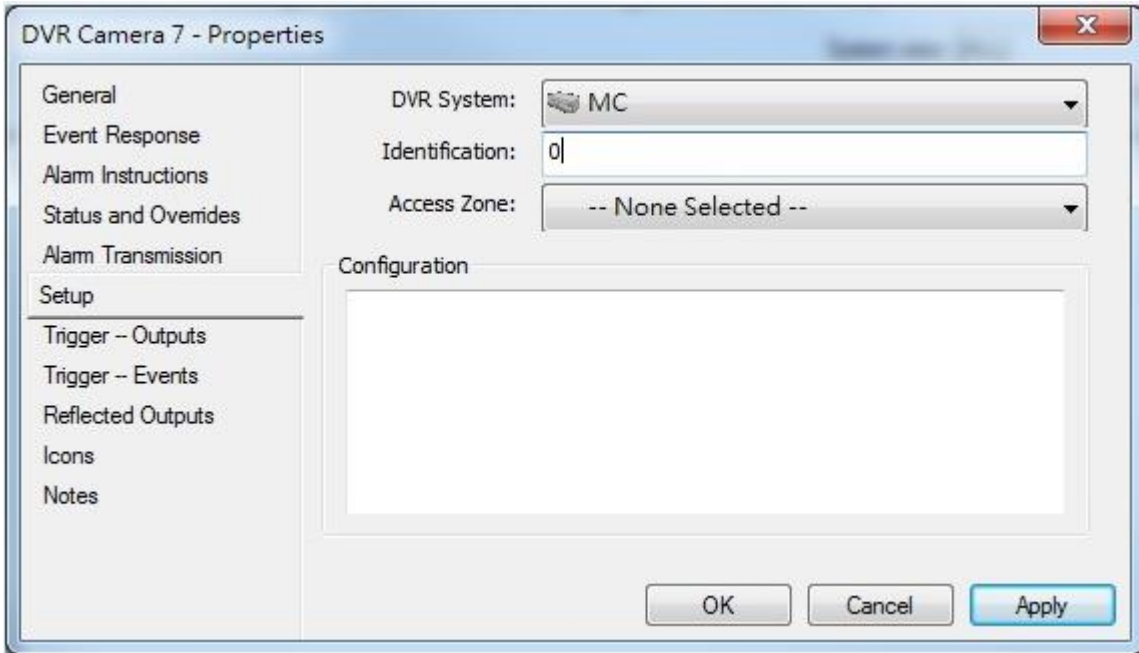


Step 5: Configure DVR Camera

Double click on DVR camera → Setup → Select DVR System → Insert Identification

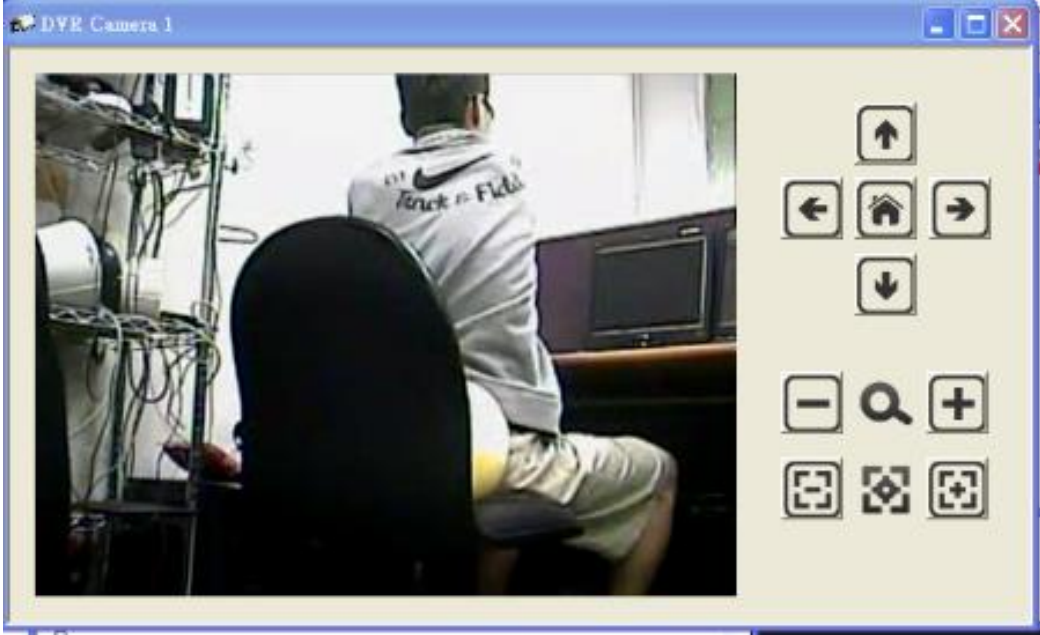


Note: Identification means the channel number. 0 refers to Channel 1, 1 means Channel 2 and so on



Step 6: Live Video Preview

Double left click on DVR Camera → Live view window pop-up



Resolution: 480x300

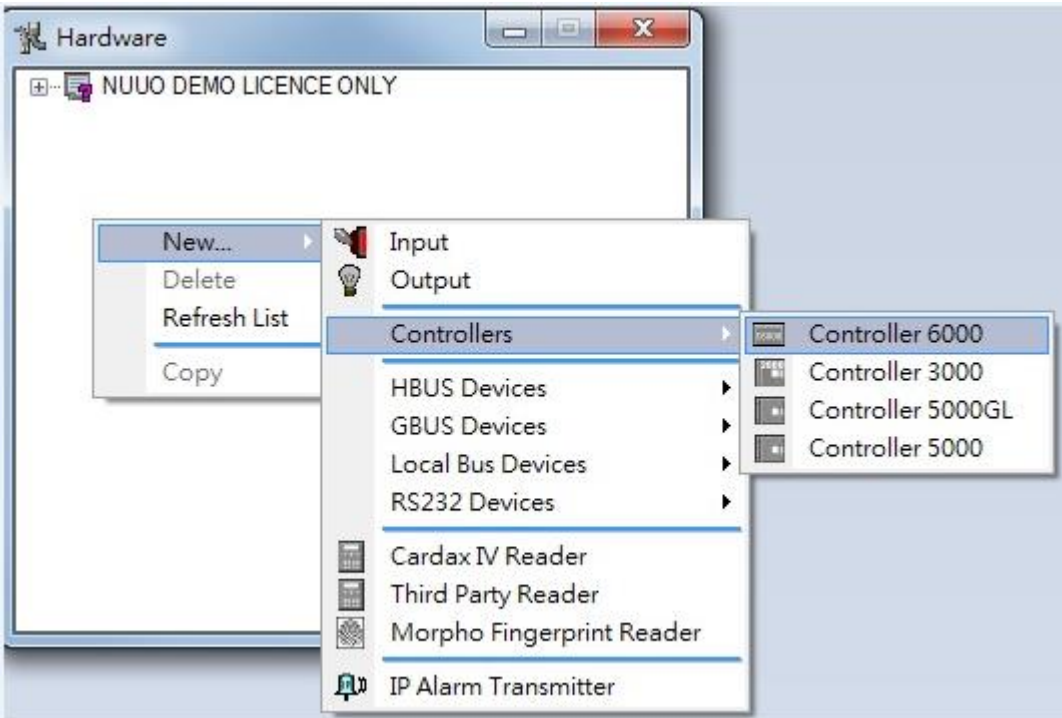
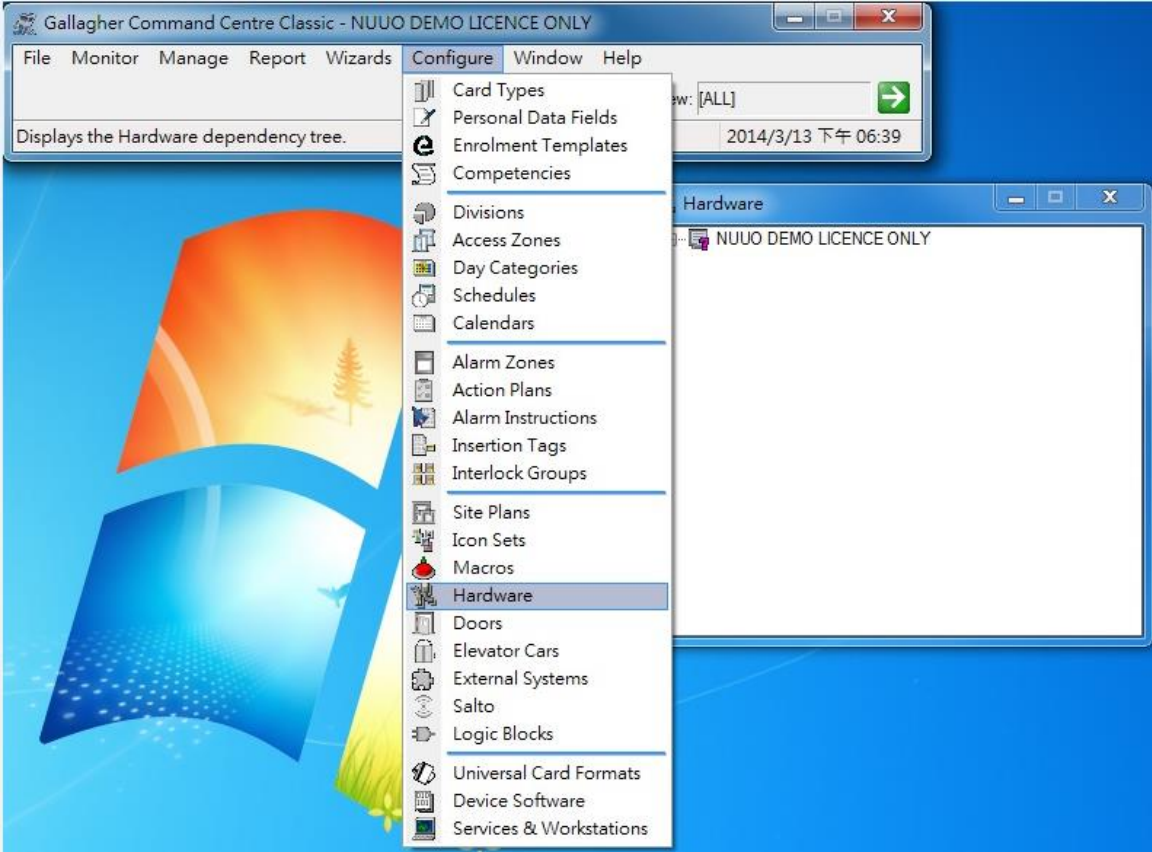
Icon definition:

	PTZ Up		Zoom in
	PTZ Down		Zoom out
	PTZ Left		Focus near
	PTZ Right		Focus far
	Home		

V. Playback

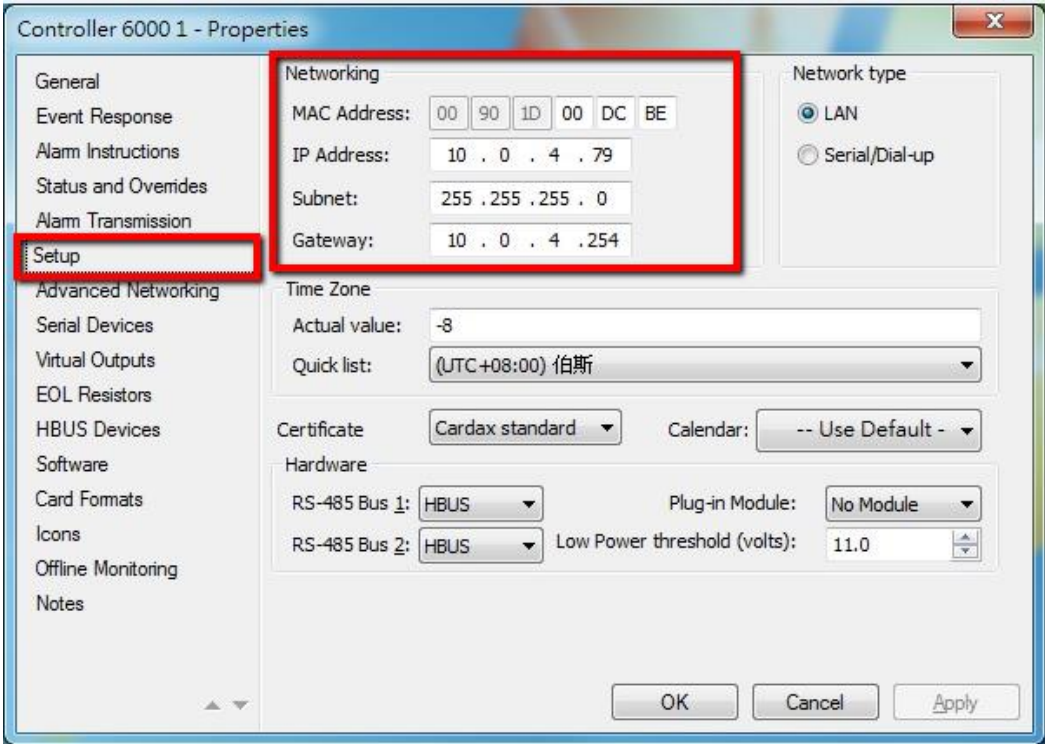
Step 1: Add Controller

Configure → Hardware → Right click “New” → Select Controller



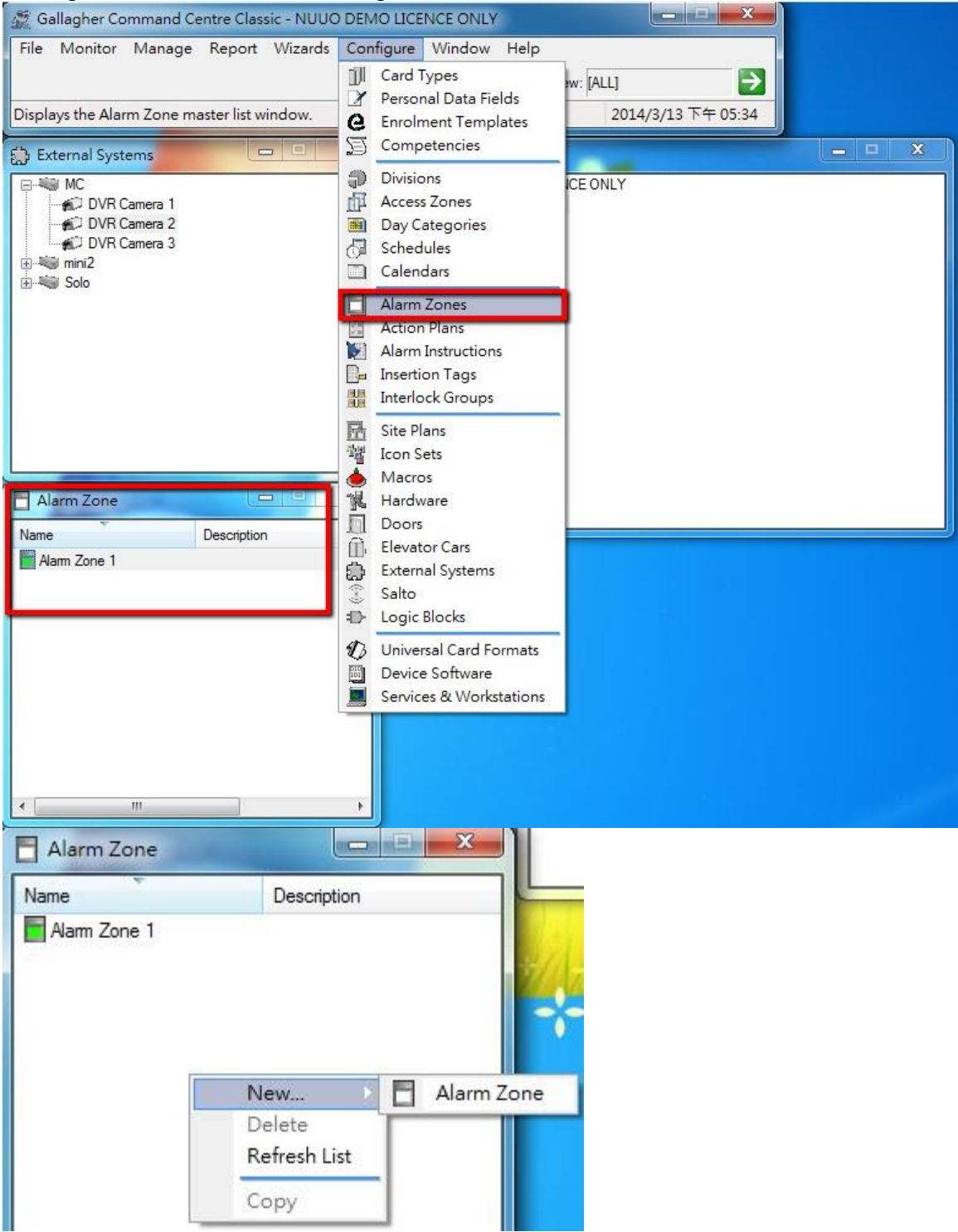
Step 2: Configure Controller

Double click on Controller → Setup → Insert Controller “MAC Address”, “IP Address”, “Subnet” and “Gateway”



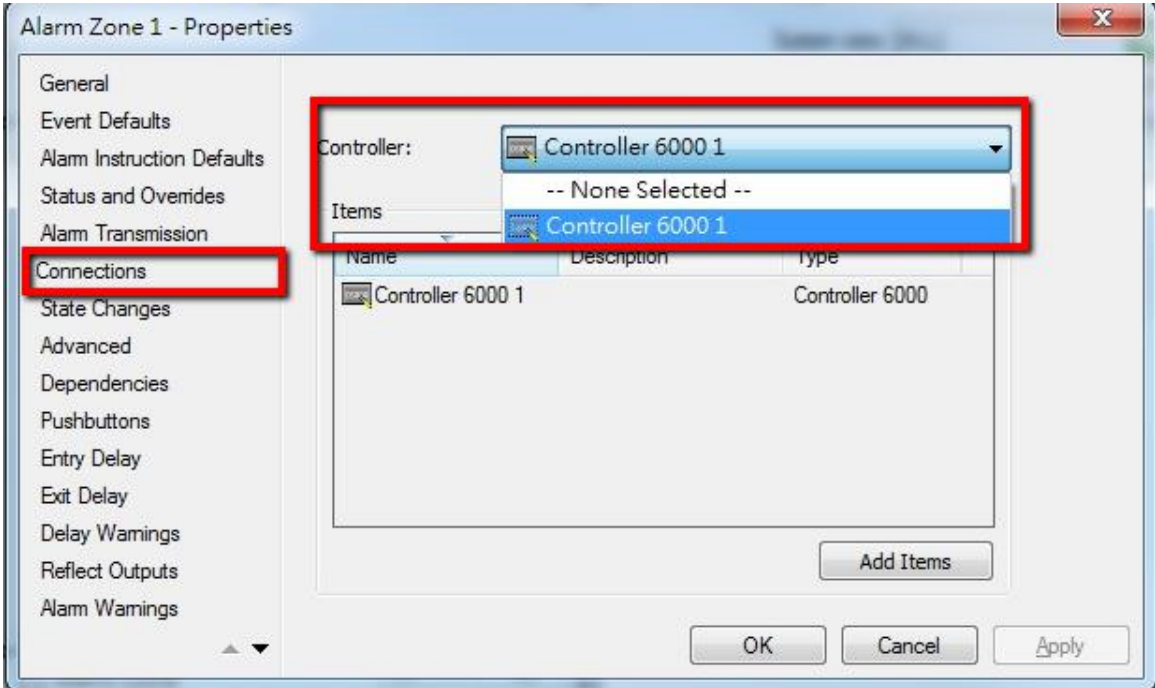
Step 3: Add Alarm Zone

Configure → Alarm Zones → Right click “New” → Alarm zone



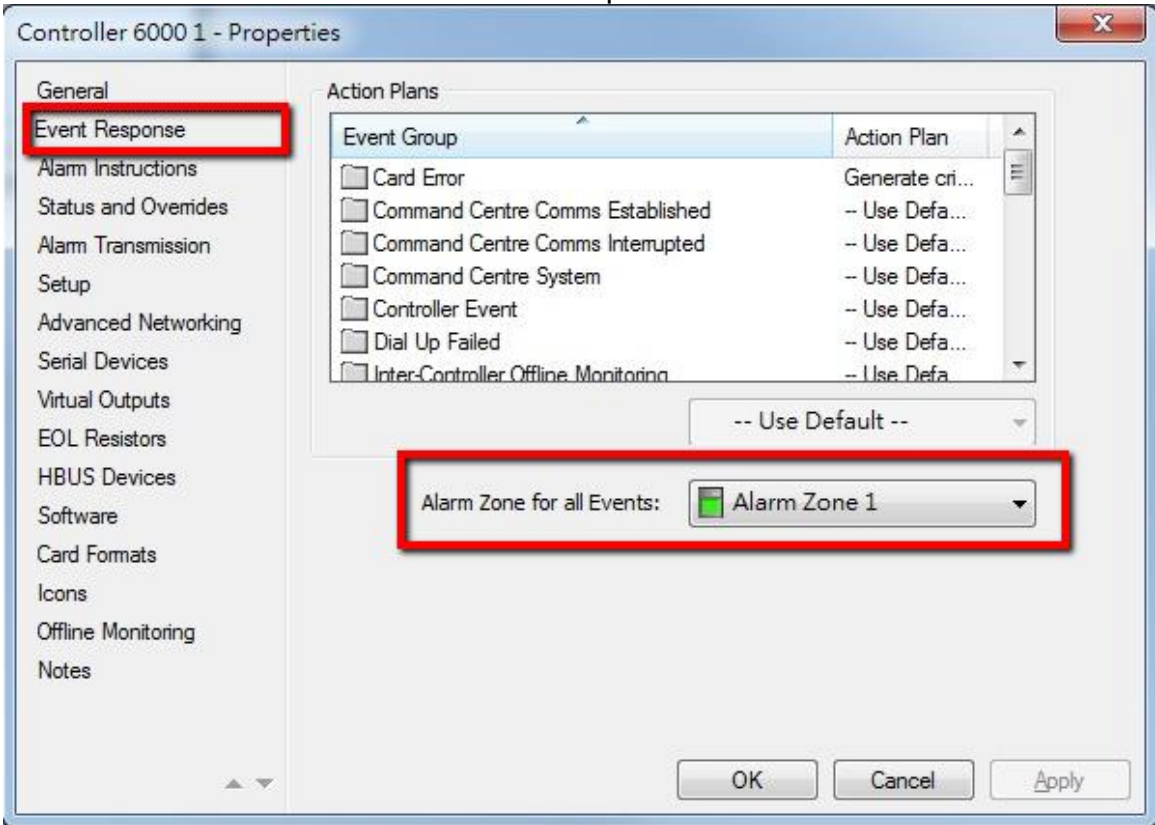
Step 4: Configure Alarm Zone

Double click on Alarm Zone list → Connections → Select Controller



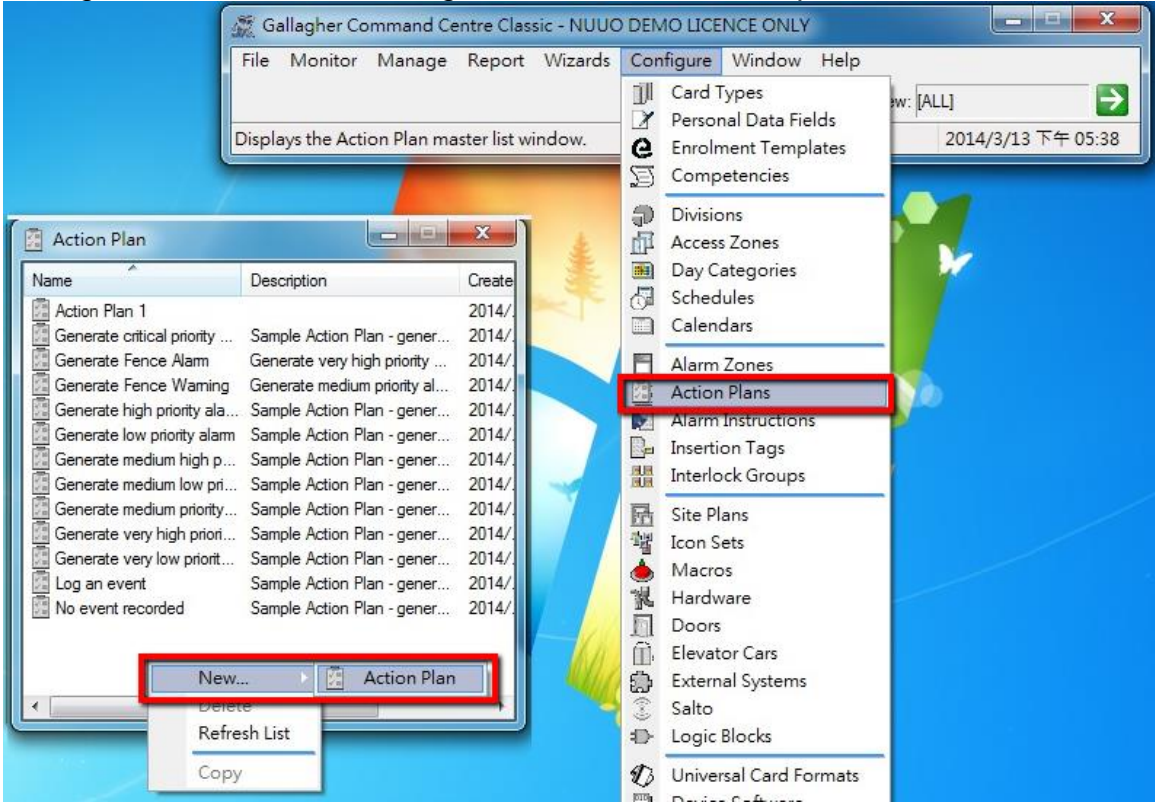
Step 5: Setup Controller event

Double click on controller list → Event Response → Select Alarm Zone



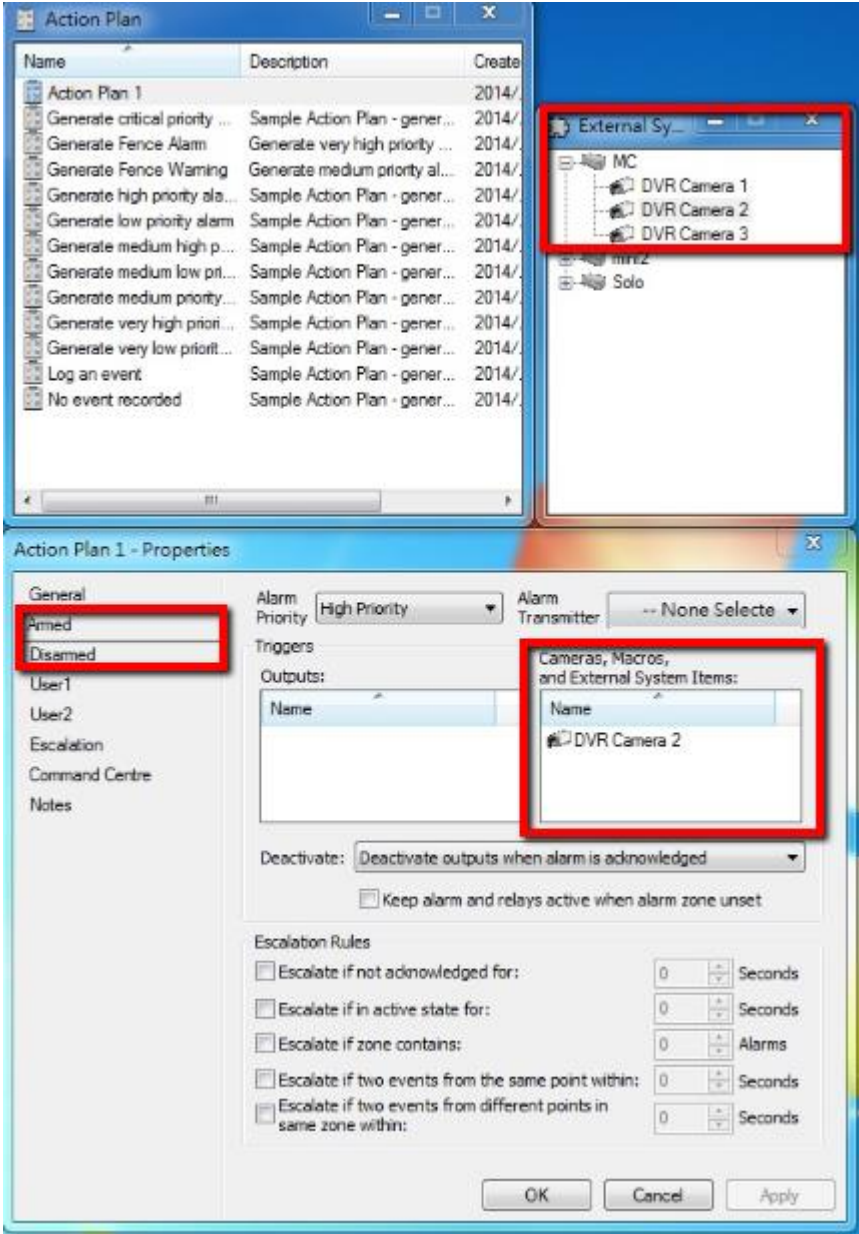
Step 6: Add Action Plan

Configure → Action Plans → Right click “New” → Action plan



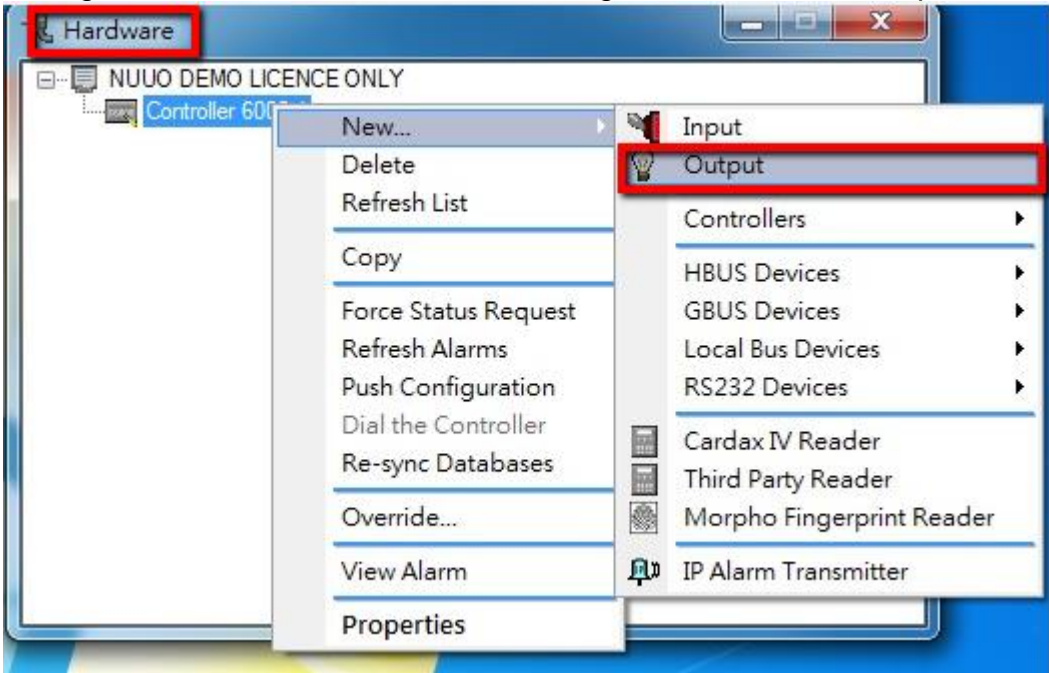
Step 7: Configure Action Plan

Armed → Copy or drag DVR camera to “Cameras, Macros and External System Items”. Same for Disarmed



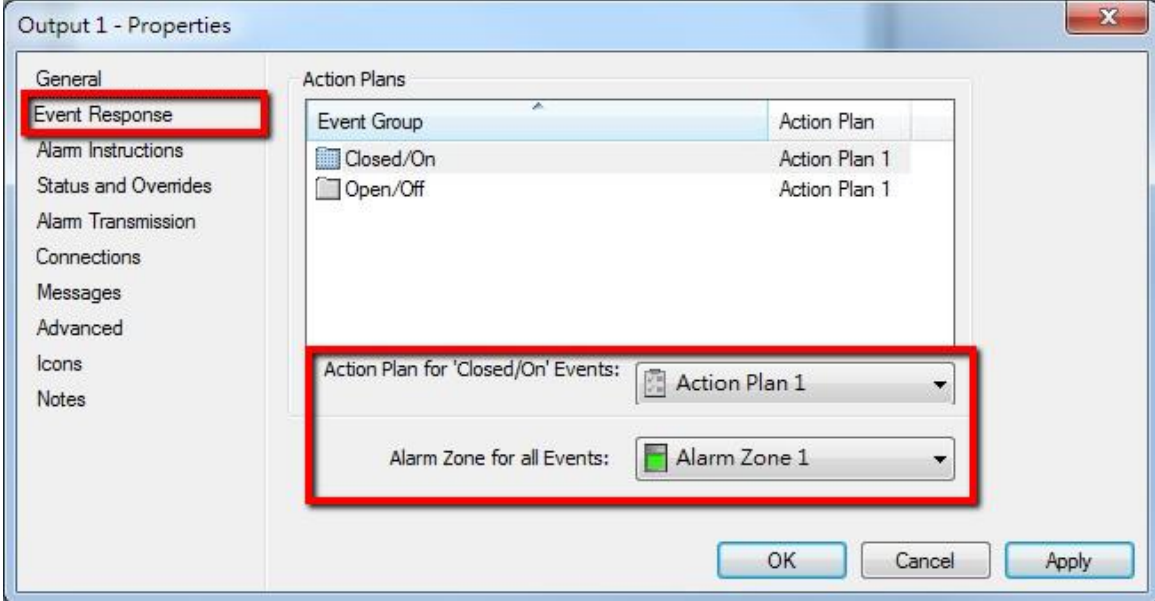
Step 8: Add Output

Configure → Hardware → Controller → Right Click “New” → Output

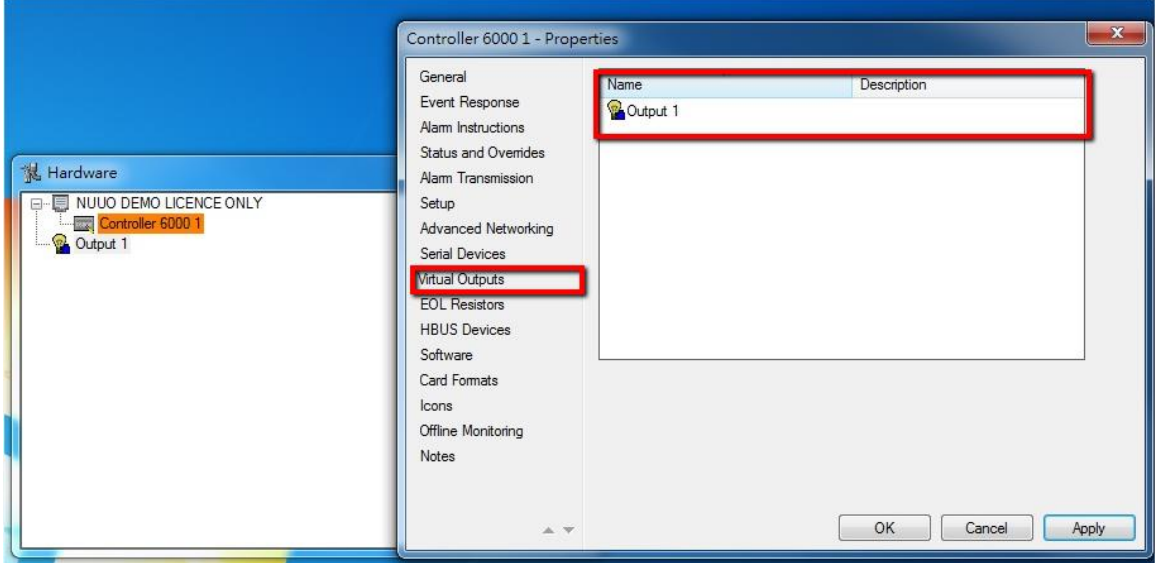


Step 9: Configure Output Event

Double click output list → Event Response → Select “Action Plan” and “Alarm Zone”

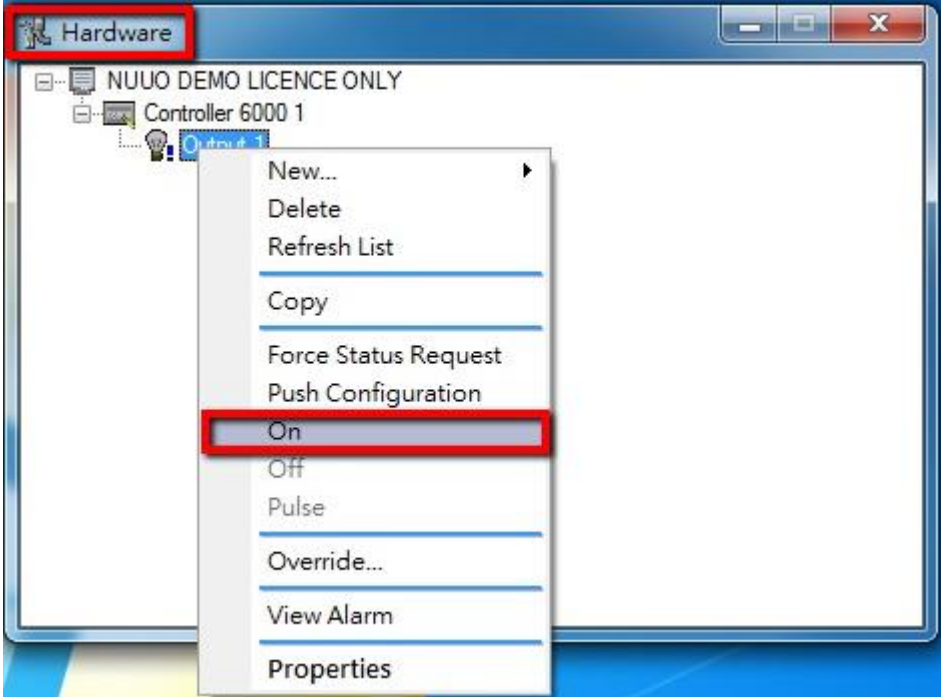


Note: If you don't have physical output device or you'd like to trigger output from Command Centre software, please copy or drag Output to “Controller→Virtual Outputs”



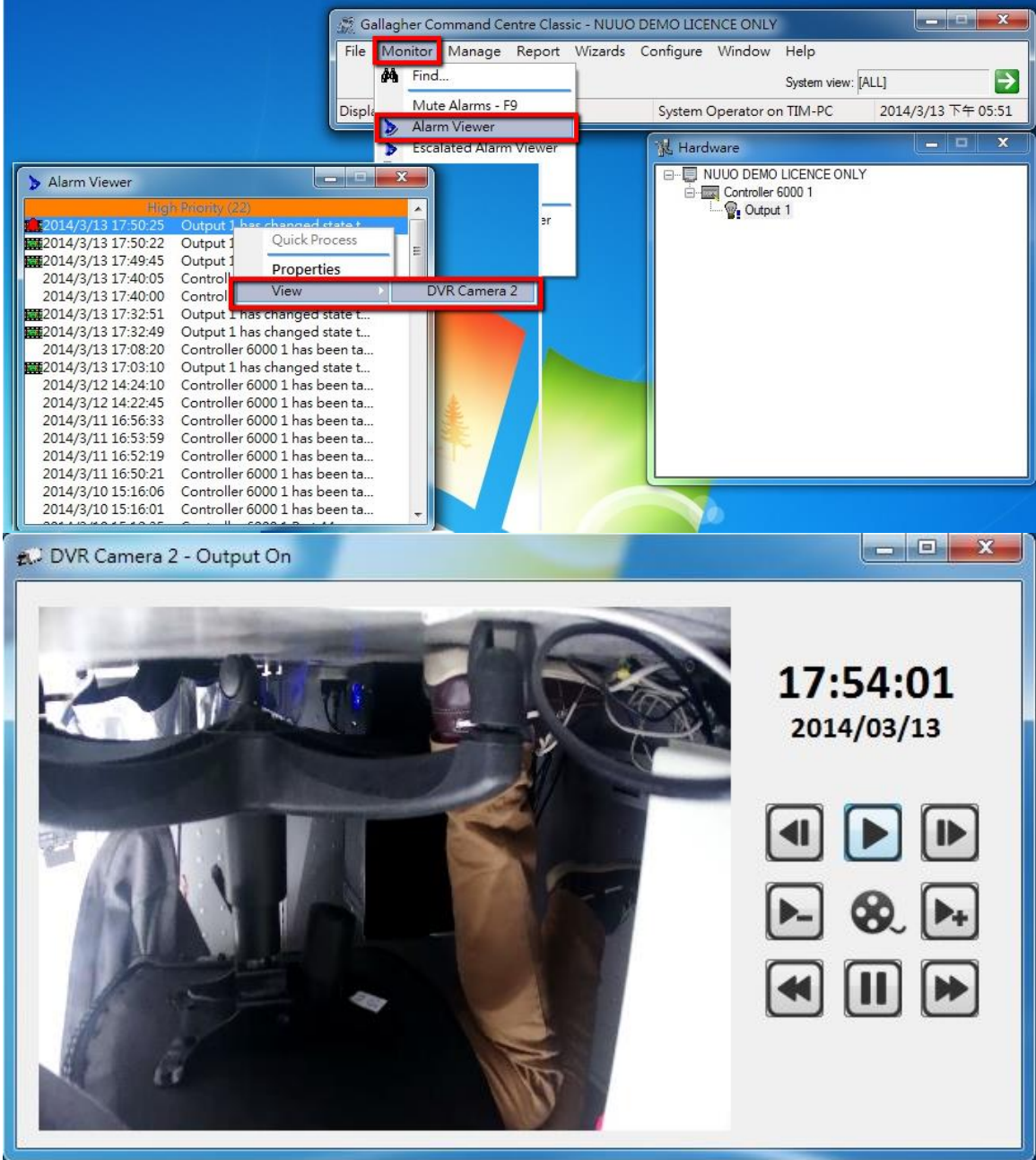
Step 10: Trigger Output Event

Hardware → Right click “Output” → On or Off



Step 11: View playback

Monitor → Alarm Viewer → Select alarm → Right click “View” → DVR Camera → Playback window pop-up



Resolution: 480x300

Icon definition:

	Step backward		Speed up
	Play		Rewind (Previous Interval)
	Step forward		Pause
	Speed down		Fast forward (Next Interval)