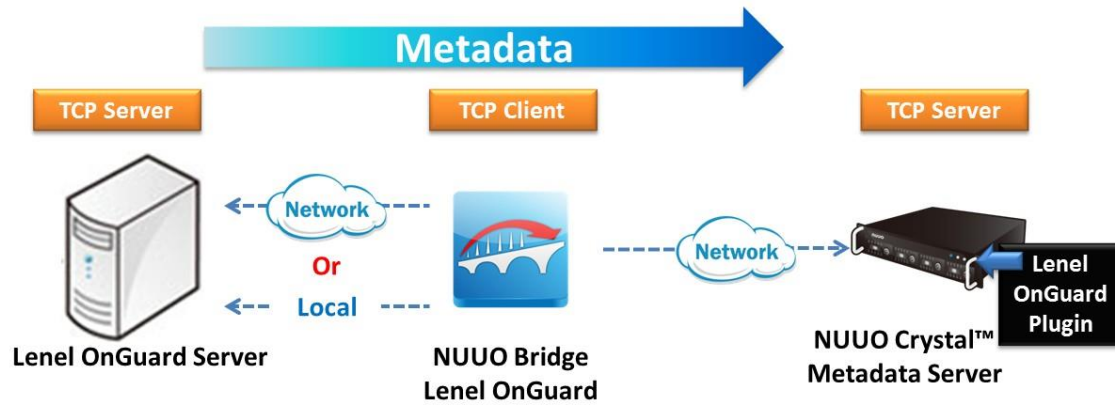


**NUUO Crystal 3rd Party Integration
Lenel's OnGuard
User Guide
Version 1.0**

Overview

- Overview 2**
- I. Structure..... 3**
- II. Product Info 3**
- III. NUUO Bridge Lenel’s OnGuard 3**
 - 1. Introduction3**
 - 2. Requirements.....4**
 - 3. Use Case.....4**
 - 4. Configuration6**
- IV. Lenel’s OnGuard Access Control Events 15**
 - 1. Feature overview 15**
 - 2. Supported OnGuard Event 15**
- V. NUUO Metadata Server Configuration 16**
 - 1. Crystal Titan 16**

I. Structure



II. Product Info

| Item | Version | Compatible Server |
|----------------------------|---------|---|
| NUUO_Bridge_Lenel'sOnGuard | V1.0.2 | - Lenel's OnGuard v6.6 - NUUO Crystal Titan v2.2 and above |
| ACLlenel_Crystal2.2_2.0 | V2.0 | - Lenel's OnGuard v6.6 - NUUO Crystal Titan v2.2 and above |

III. NUUO Bridge Lenel's OnGuard

1. Introduction

- (1) Install shield name: NUUO Bridge Lenel's OnGuard
- (2) Software name: NUUO Bridge Lenel's OnGuard

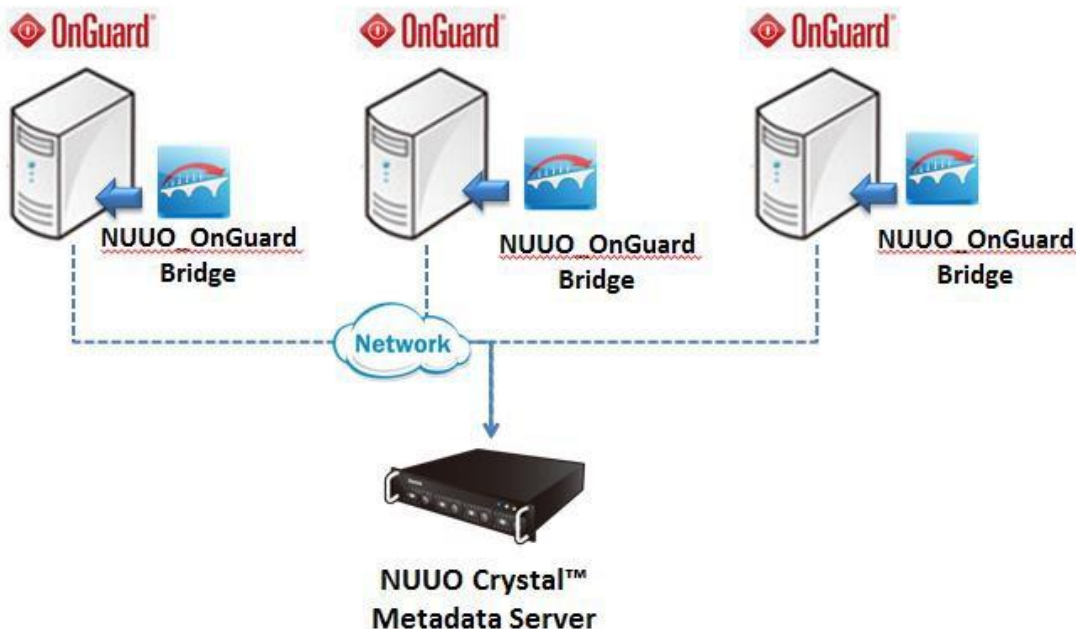
- (3) Purpose: NUUO Bridge is used for transmit Lenel's OnGuard Server metadata to NUUO Metadata Server.
- (4) Supported product:
 - Crystal v2.2 and above

2. Requirements

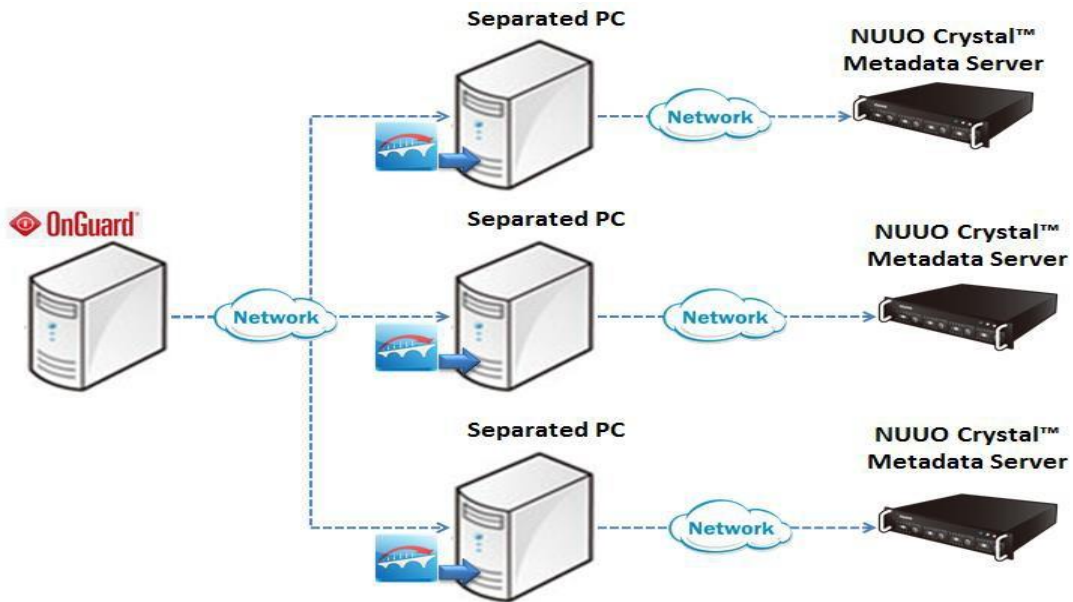
- (1) Extra license for NUUO Bridge Lenel's OnGuard is **NOT** required.
- (2) Bridge can be installed in any Windows based server, including Lenel's OnGuard access control server, NUUO Mainconsole server or separated server.
- (3) Each "**NUUO Bridge**" only can connect with single Lenel's OnGuard Server.
- (4) Only **ONE** "**NUUO Bridge**" can run on single server.

3. Use Case

[1] If one NUUO Crystal Metadata Server would receive events from multiple Lenel's OnGuard Servers, NUUO Bridge can be installed on Lenel's OnGuard Server.



[2] If multiple NUUO Crystal Metadata Servers would receive events from one Lenel's OnGuard server, NUUO Bridge must be installed in multiple separated PC.

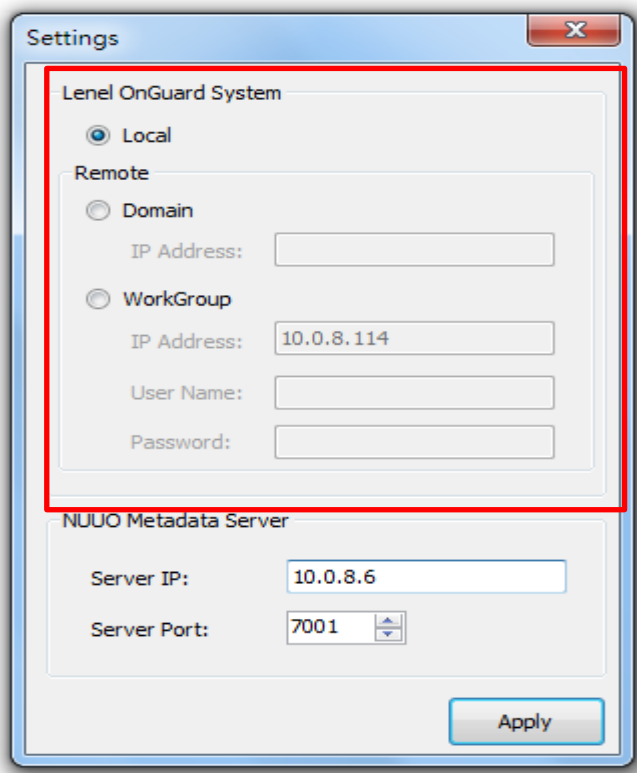


4. Configuration

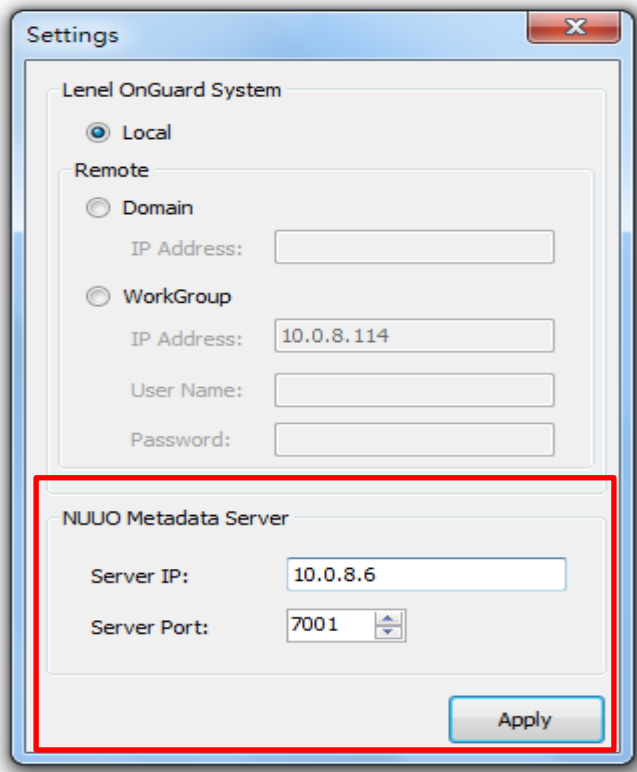
Step 1: Launch **NUUO_Bridge_Lenel'sOnGuard.exe**

Step 2: Setting the connection to Lenel's OnGuard Server.

- **Local:** If NUUO Bridge Lenel's OnGuard is installed in Lenel's OnGuard server, please select local.
- **Remote:** If NUUO Bridge Lenel's OnGuard is installed in separated PC, please select remote , there will be two types below :
 1. Domain : Insert the server address by Lenel's corresponding Windows User linked with Lenel's System by Single Sign-on.
 2. Workgroup : Insert the server address, user name and password by Lenel's corresponding Windows User linked with Lenel's System by Single Sign-on.

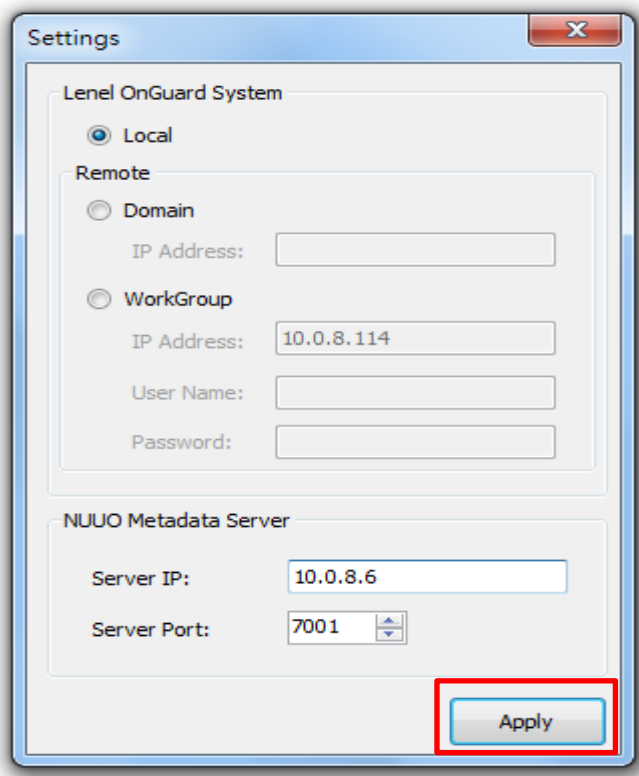


Step 3: Setting the connection to NUUO Crystal Metadata Server
Insert the server address and port of NUUO Crystal Metadata Server



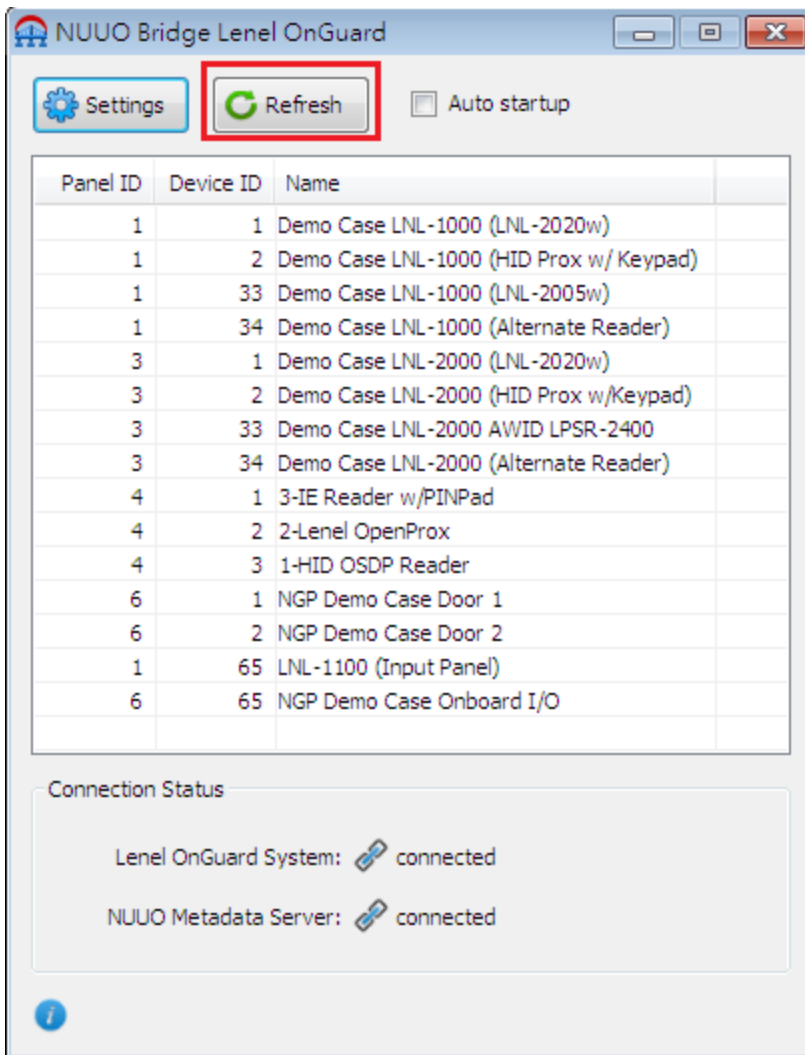
Step 4: Apply the settings

Click apply to connect **NUUO Bridge Lenel's OnGuard** with **Lenel's OnGuard Server** and **NUUO Metadata Server**



Step 5: Click “Refresh” to synchronize the device list on Lenel’s OnGuard Server.

(Optional)

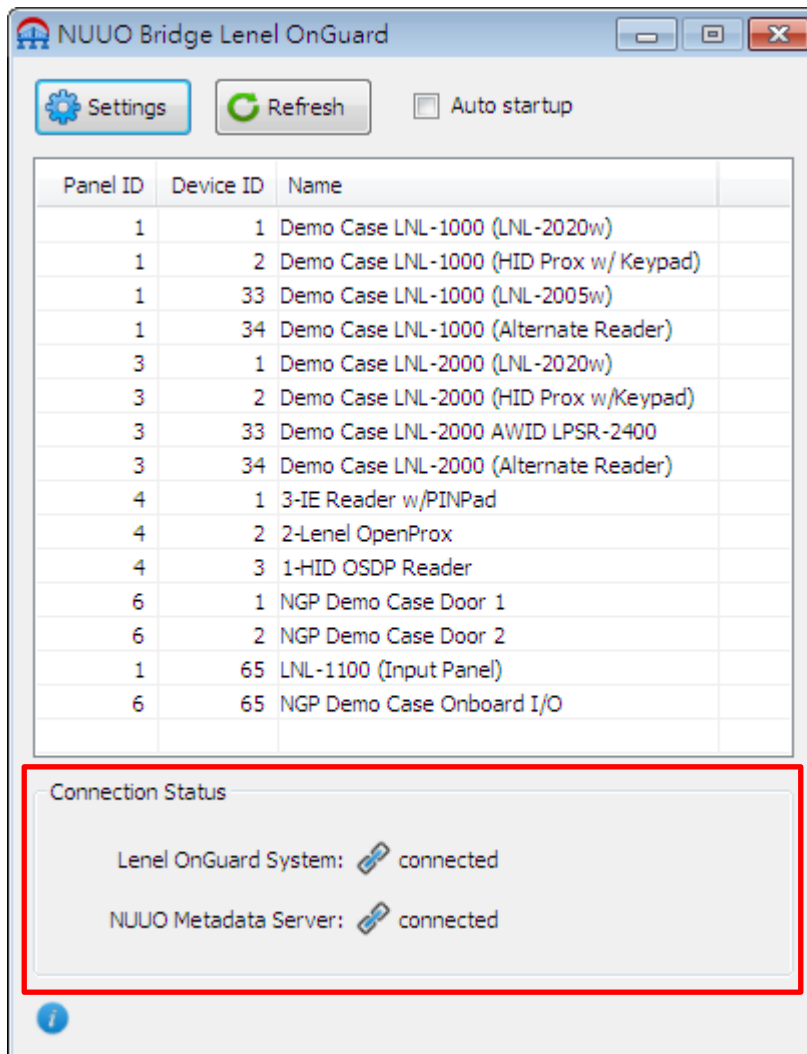


Step 6: Check connection status of [1] NUUO Bridge Lenel's OnGuard and Lenel's OnGuard System, [2] NUUO Bridge Lenel's OnGuard and NUUO Metadata Server

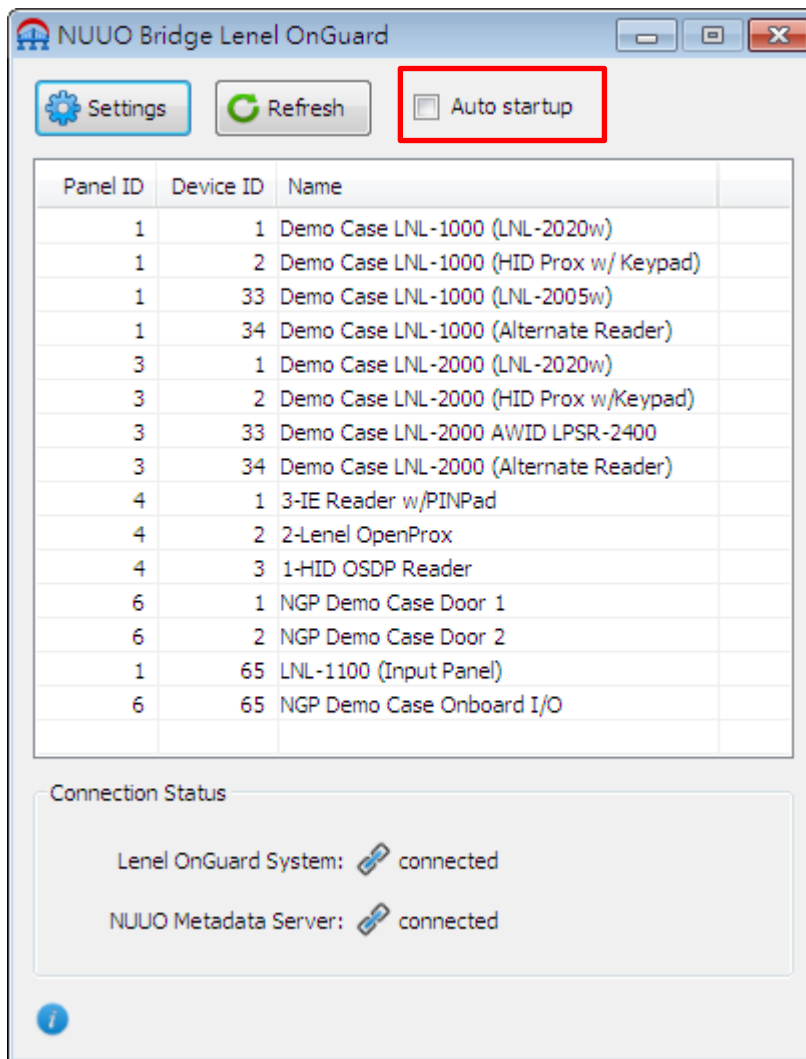
Note:

[1]  Connected

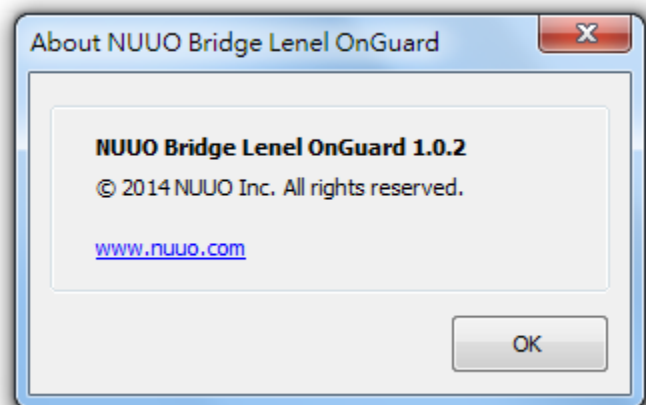
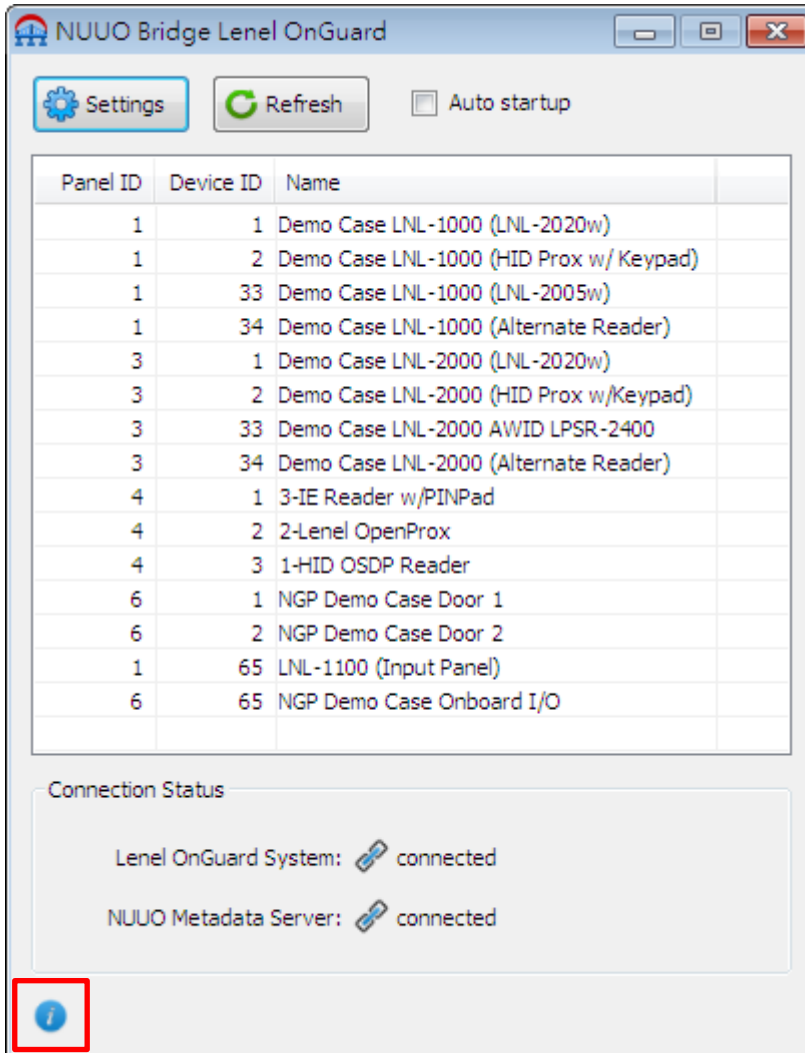
[2]  Connecting



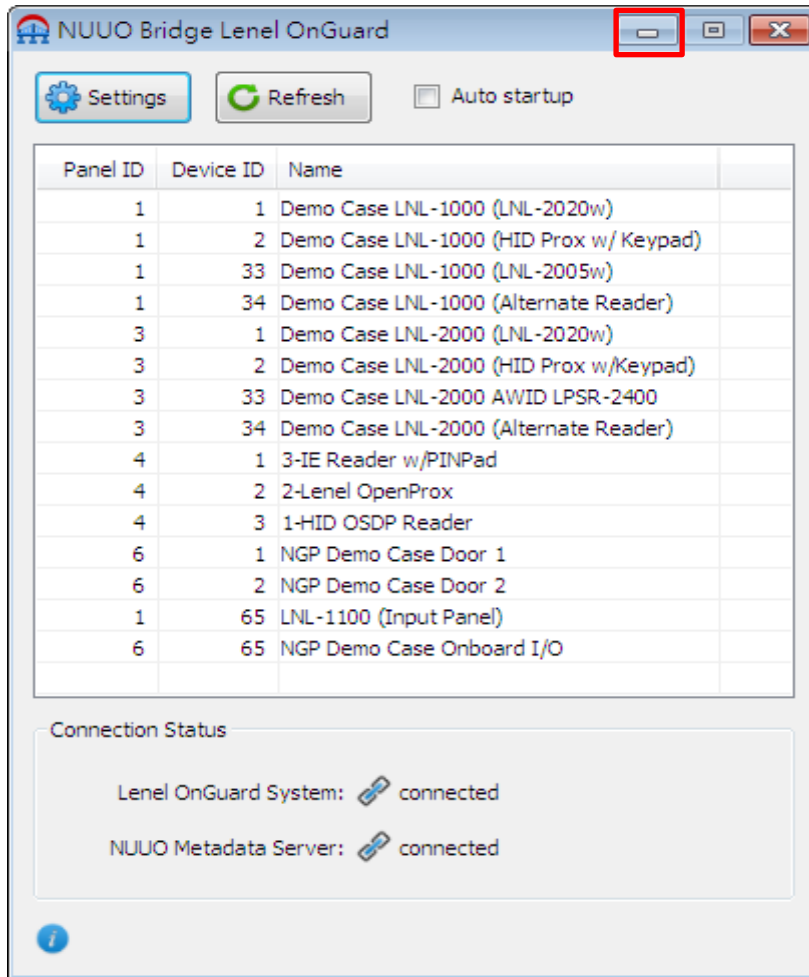
Step 7: Click “**Auto Startup**” to turn on the NUUO Bridge Lenel’s OnGuard and connect to Lenel’s OnGuard System & NUUO Metadata Server automatically when NUUO Bridge Lenel’s OnGuard installed PC restarts (Optional)



Step 8: Click “About” icon to check software info.

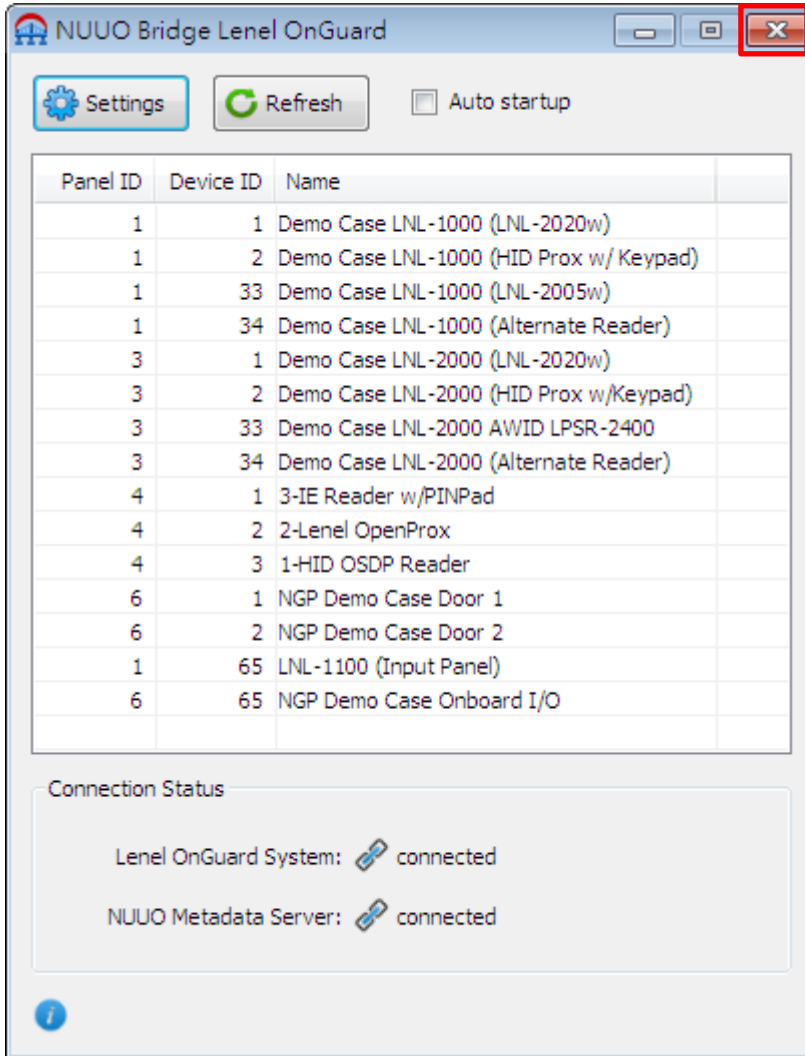


Step 9: Click [-] to minimize the Bridge service window to Running Service



Step 10: Other behavior

[1] Click [X] to turn off the Bridge service



IV. Lenel's OnGuard Access Control Events

1. Feature overview

- (1) Displaying card and event information on live video
- (2) Recording video with card and event metadata
- (3) 10 user defined events
- (4) Triggering actions which depends on server ability
- (5) Keyword search in playback.

2. Supported OnGuard Event

Limitation:

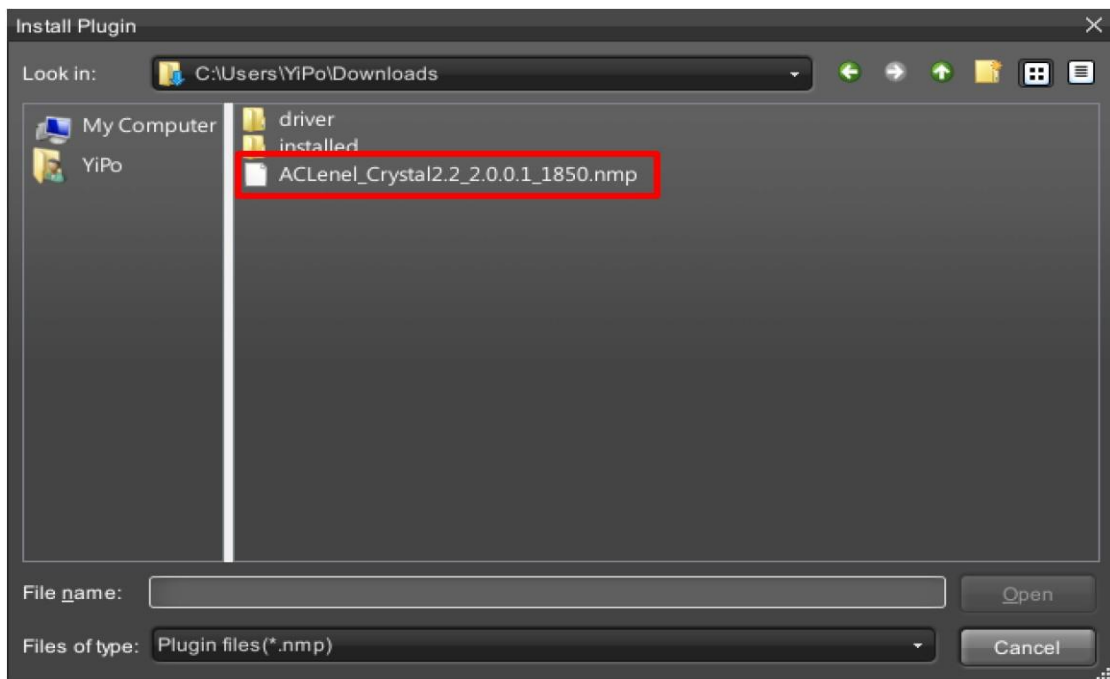
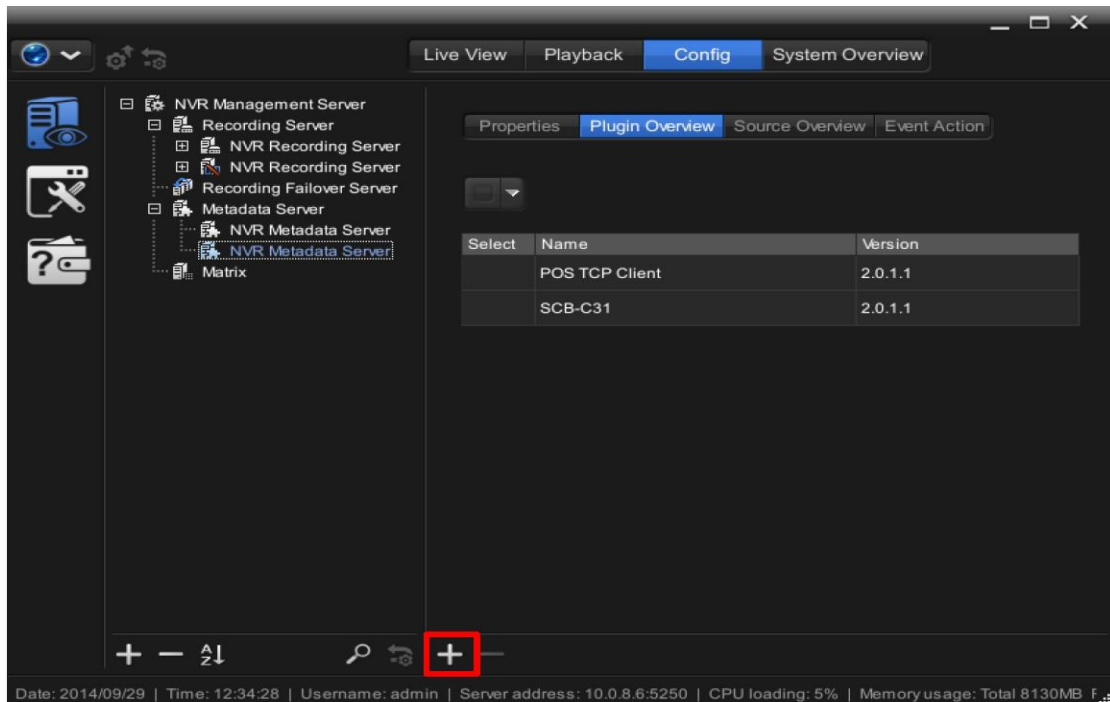
- (1) Only readers that are configured in OnGuard are imported into the NUUO Bridge Lenel's OnGuard application.
- (2) The NUUO Crystal recorder only displays reader events.
- (3) Readers are manually entered into the Crystal Recorder by choosing the Panel ID and Device ID as shown in the NUUO Bridge application.
- (4) Events from Panels will not be displayed on the recorder. If an access panel goes off-line there is no indication at the Bridge or the NUUO Crystal Recorder.
- (5) They get the list of readers from OnGuard when integration starts. There is no periodical sync to refresh the list. There is 'refresh' function on the integration which provides sync on demand.
- (6) Each recorder can import up to 120 card readers. Multiple recorders can then import more readers. The NUUO Crystal system can then centrally manage all recorders.
- (7) Recorder relay Inputs and outputs are not supported.
- (8) Custom alarms are not supported, the NUUO Crystal Recorder only displays events.
- (9) NUUO Bridge Lenel's OnGuard application cannot run on the Crystal system.
- (10) For operation on a domain, the system hosting the NUUO Bridge Lenel's OnGuard application must be logged into the domain as the same user and password as the OnGuard system. There is no way to put in a different domain user name and password.
- (11) Reader inputs and outputs are not supported.

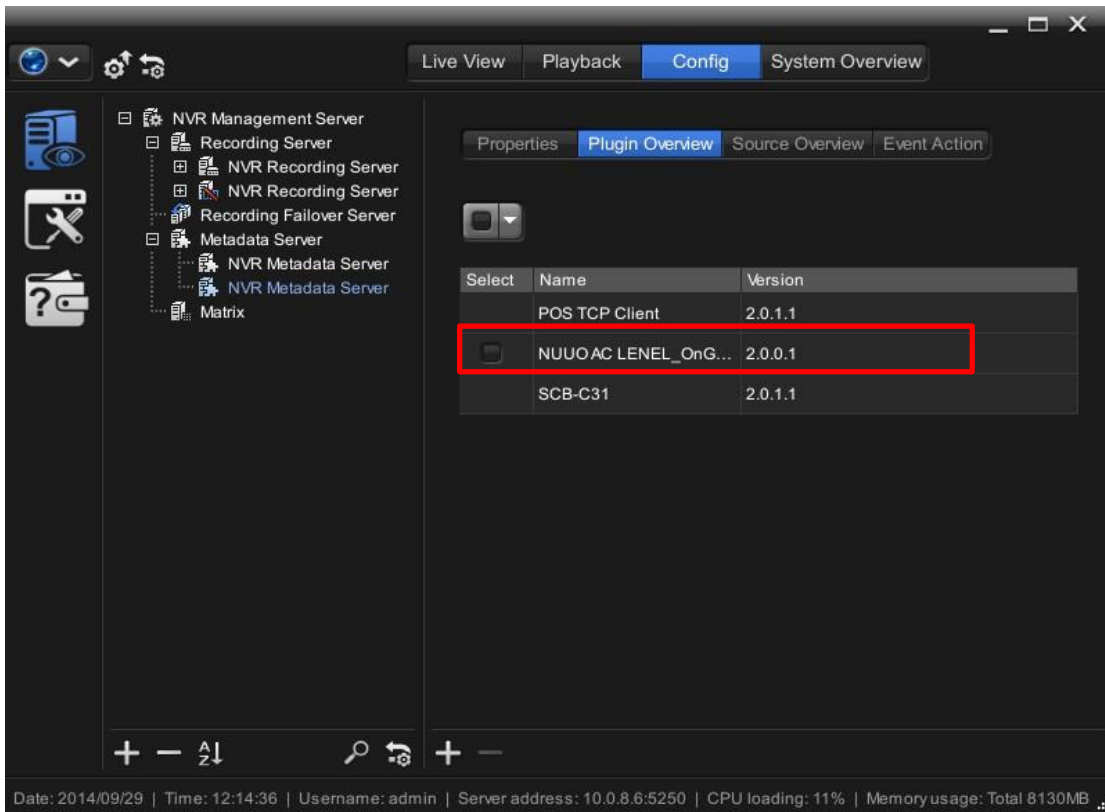
V. NUUO Metadata Server Configuration

1. CrystalTitan

Step 1: Download "NUUO _AC_Lenel OnGuard_Piugin .zip" from NUUO Website

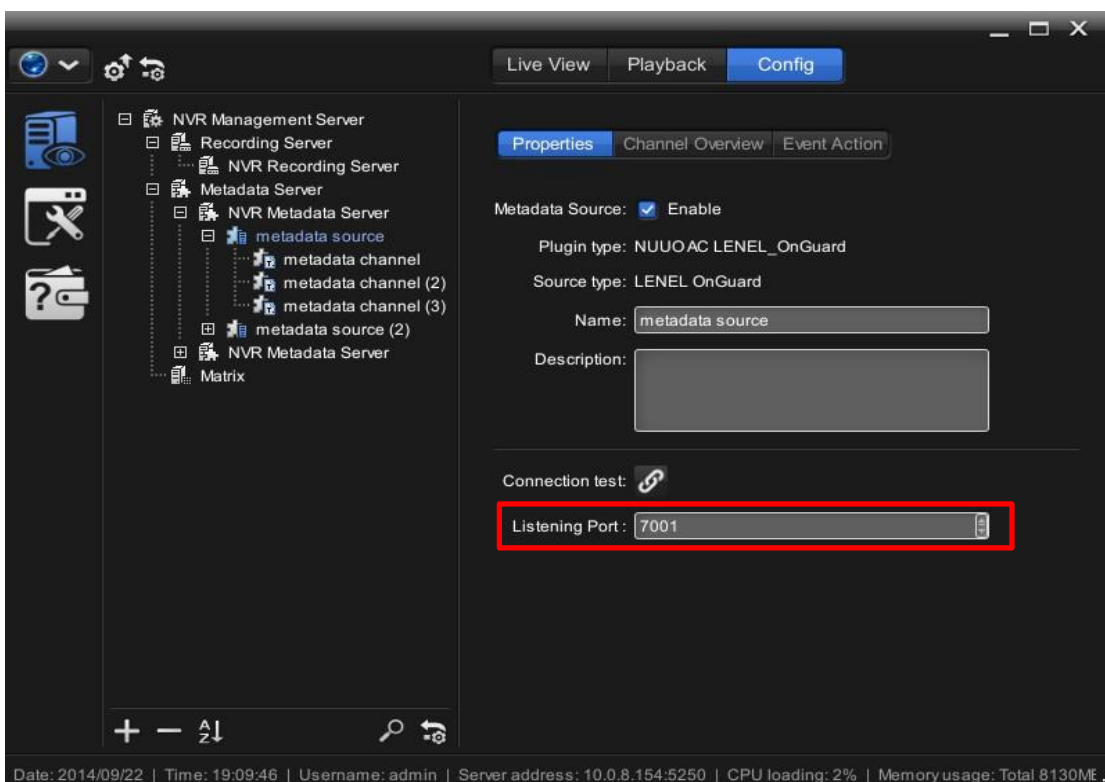
Step 2: Upload "ACLenel_Crystal2.2_2.0.0.1_1850.nmp" to Metadata server



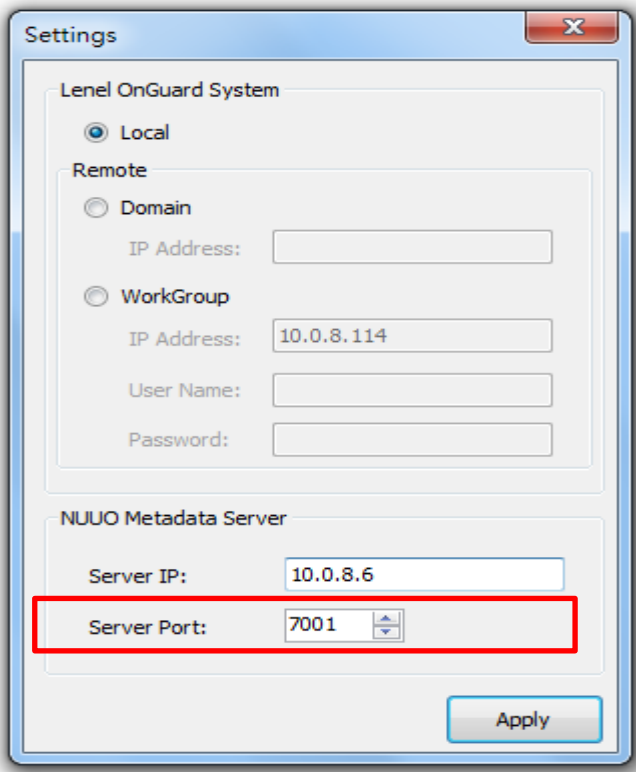


Step 3: Add a Metadata Source.

Assign a Port number to NUUO Bridge Lenel's OnGuard

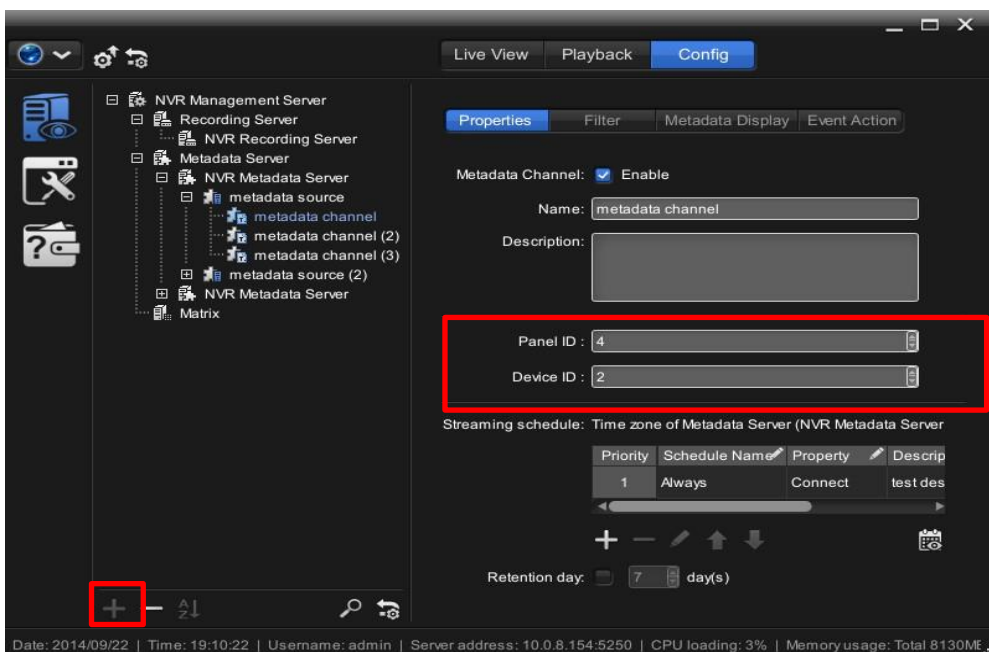


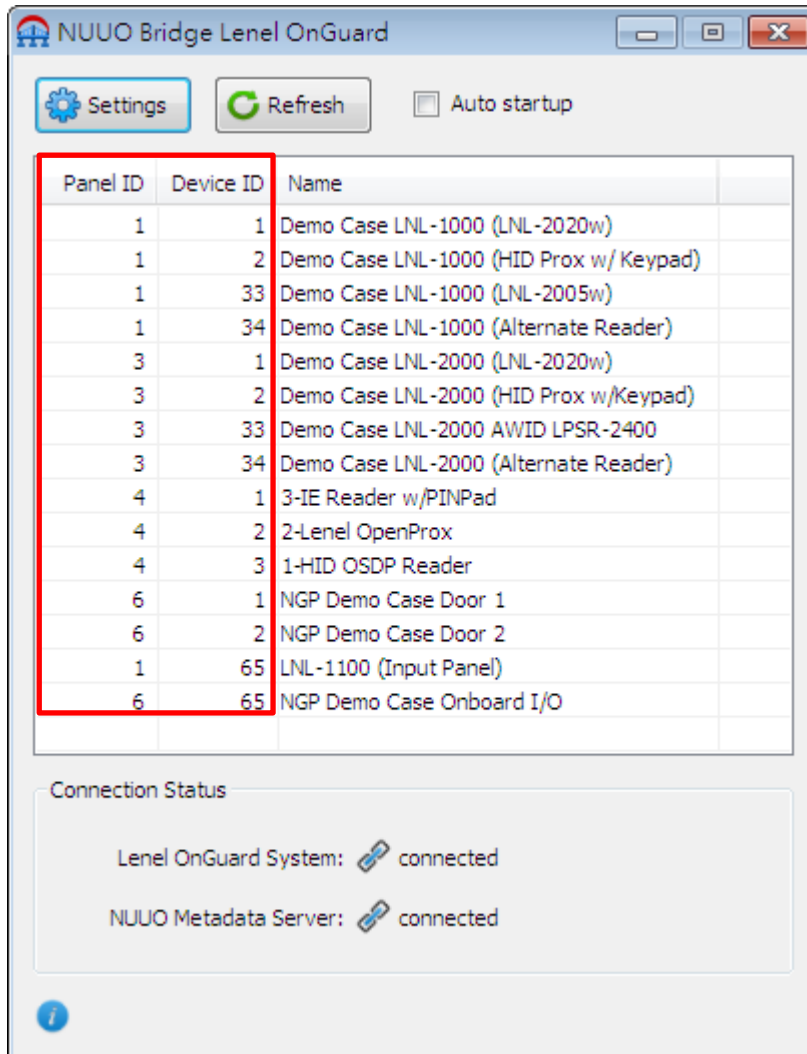
Note: NUUO Bridge Lenel's OnGuard shall insert the corresponding port



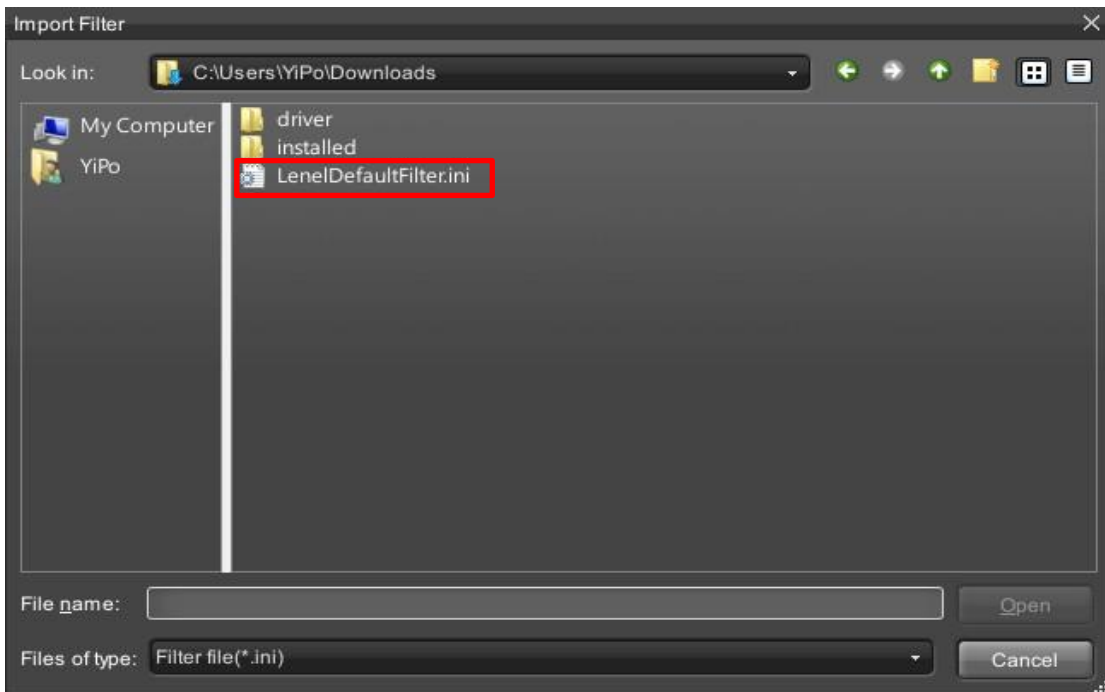
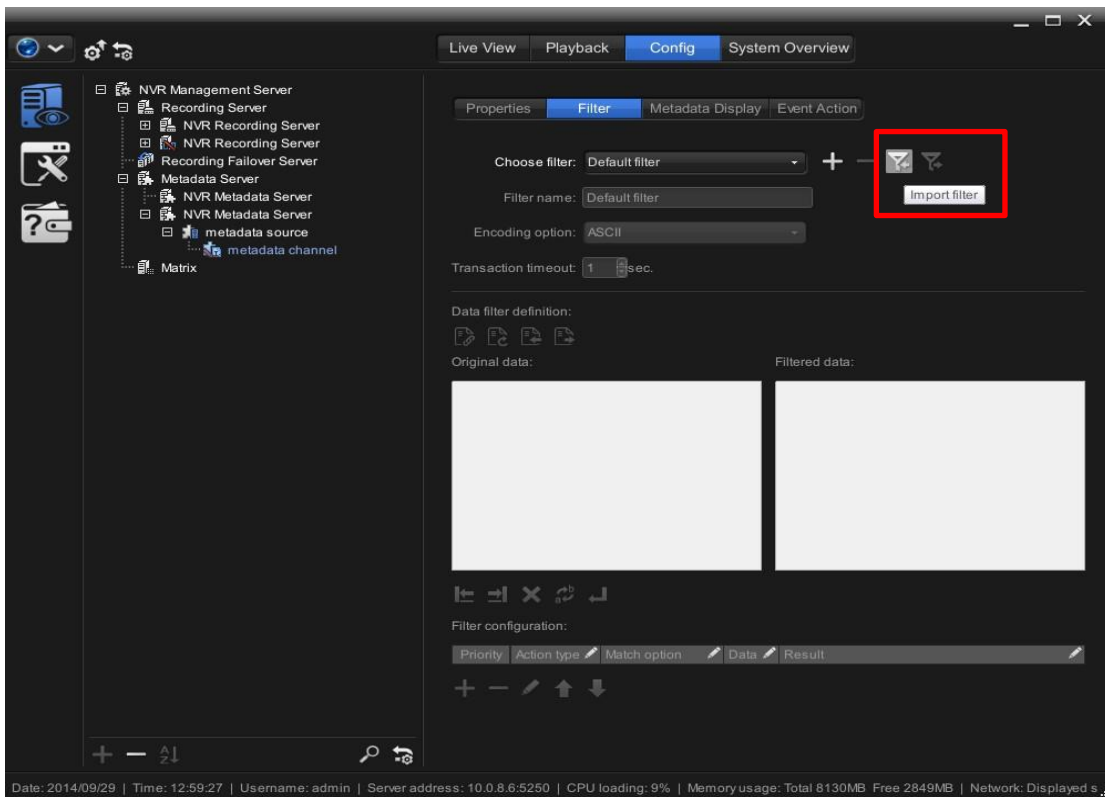
Step 4: Add a Metadata channel

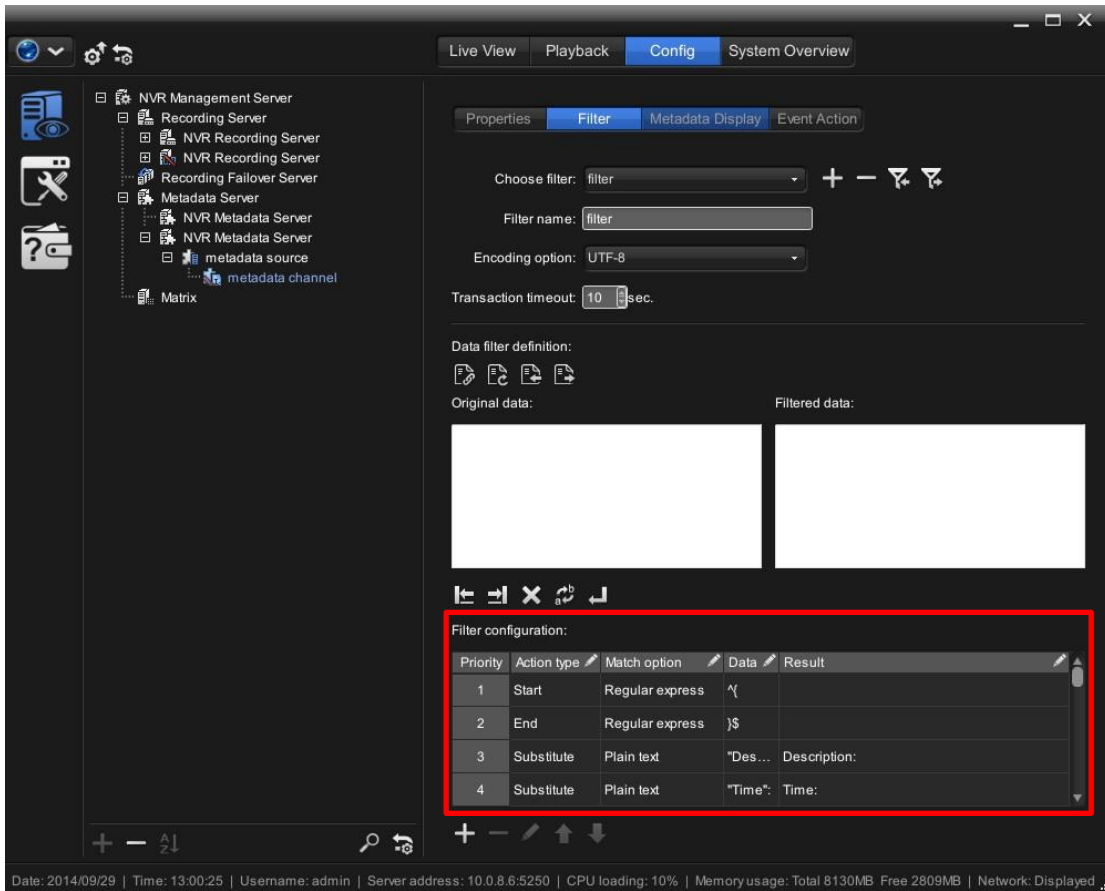
By pressing the “+” button to add a Metadata channel , and Insert corresponding Panel ID and Device ID according to the device list on NUUO Bridge Lenel's OnGuard





Step 5: Download the “**LenelDefaultFilter.ini** “ from NUUO website and Upload manually (optional)





LenelDefaultFilter includes:

- [1] AccessResult
- [2] CardNumber
- [3] Description
- [4] DeviceID
- [5] ID
- [6] PanelID
- [7] Time

Note: For each column's definition, please check the "Lenel DataConduit User guide" Chapter 13 for your reference

<http://www.nuuo.com/mktmaterials/Documents/DataConduit.pdf>

