

## Table Content

- I. INTRODUCTION ..... 2
- II. COMPATIBLE VERSION ..... 2
- III. ENVIRONMENT SETUP ..... 2
- IV. LIVE VIEW ..... 5
- V. PLAYBACK ..... 9

## I. Intruction

NUUO MainConsole (For NVR IP+, Hybrid NDVR, DVR card) and Gallagher Access Control System has been integrated, coporating to provide an interface between the two platforms, to provide LiveView and Playback fo Gallagher events.

NUUO – Gallagher interface allows Liveview/Playback video from NUUO server to be accessed within the GallagherSoftware.

Live video can be instantaneously displayed when an alarm or event activation occurs. Playback enable users access the recorded video from NUUO server.

## II. Compatible Version

NUUO Mainconsole v5.0 and above

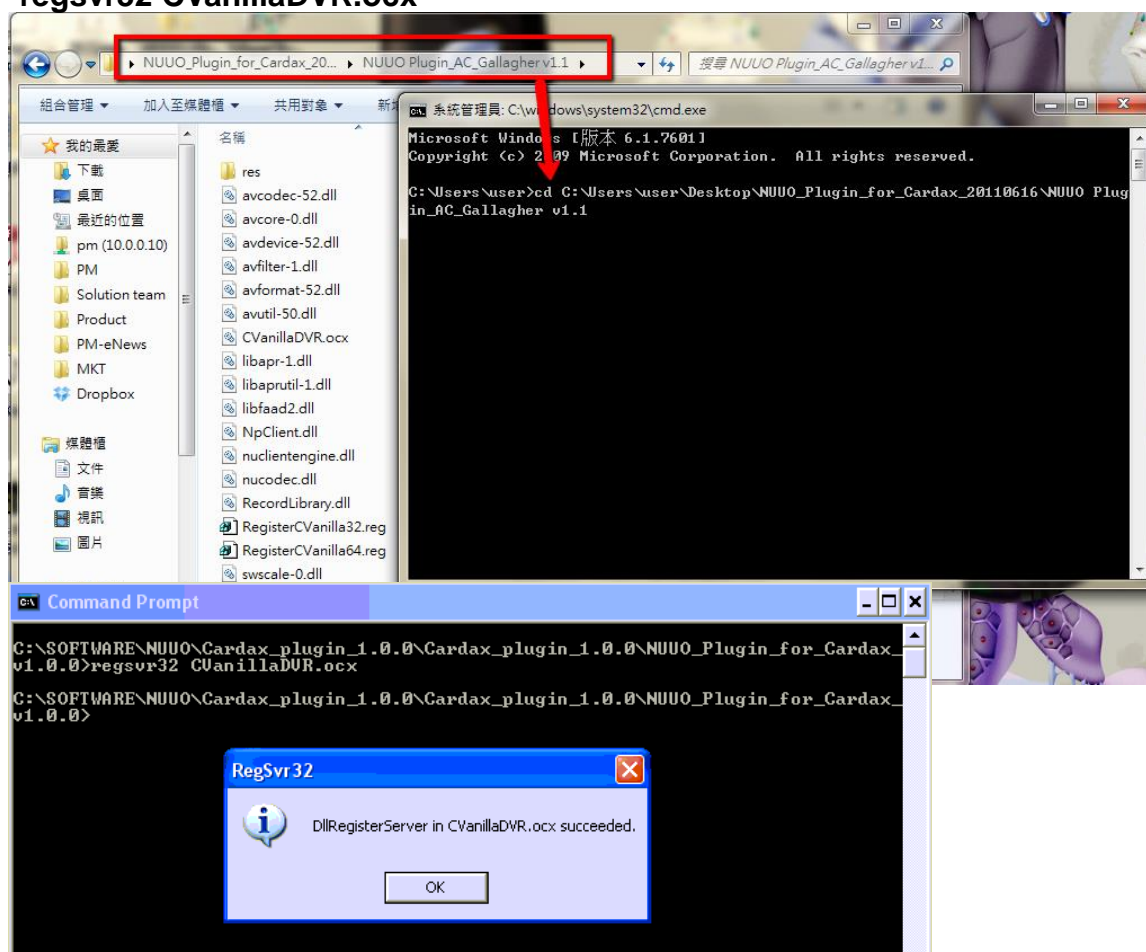
Gallagher Command Centre v7.10 and above

## III. Environment Setup

**Step 1:** Download NUUO Plugin\_AC\_Gallagher v1.1 .zip from NUUO [website](#) and unzip the file.

**Step 2: Register CVanillaDVR.ocx.**

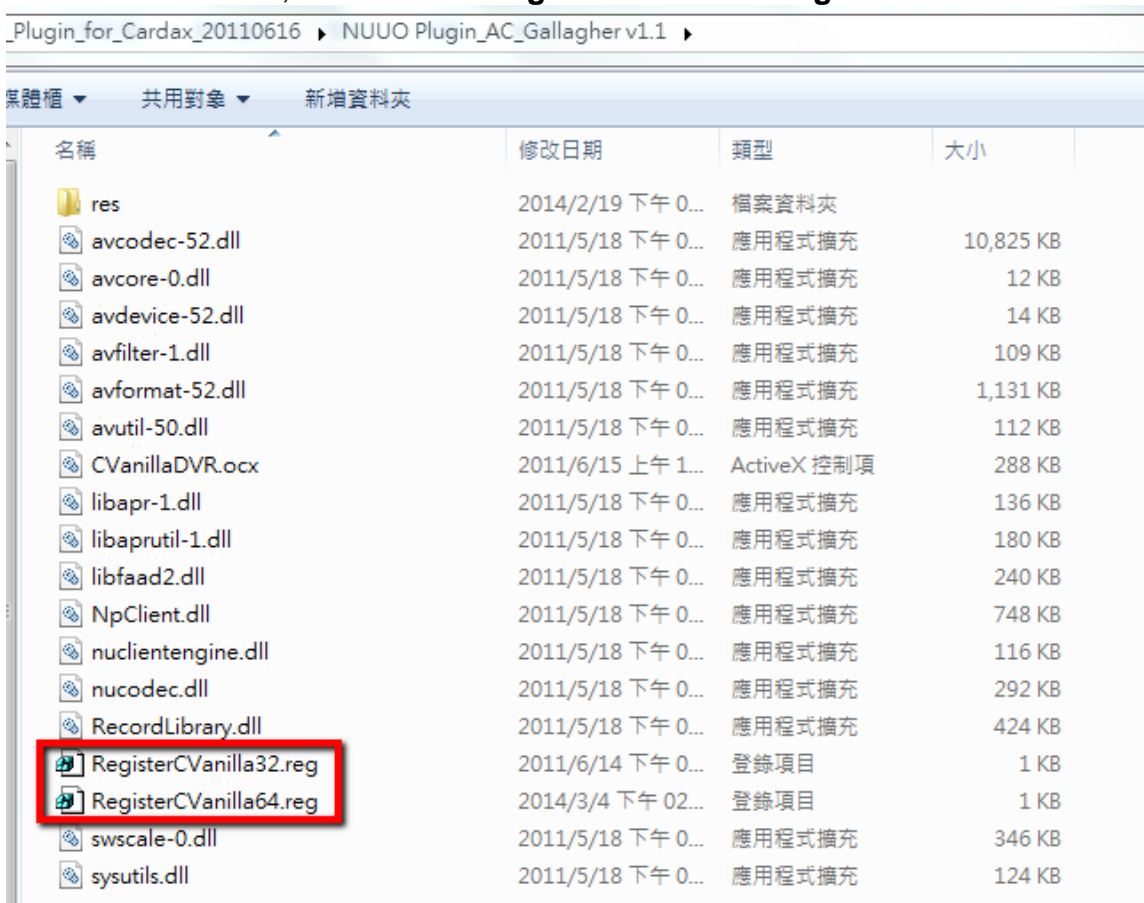
Start menu → Insert “cmd” → Insert “cd NUUO Plugin\_AC\_Gallagher file path” → Insert “regsvr32 CVanillaDVR.ocx”



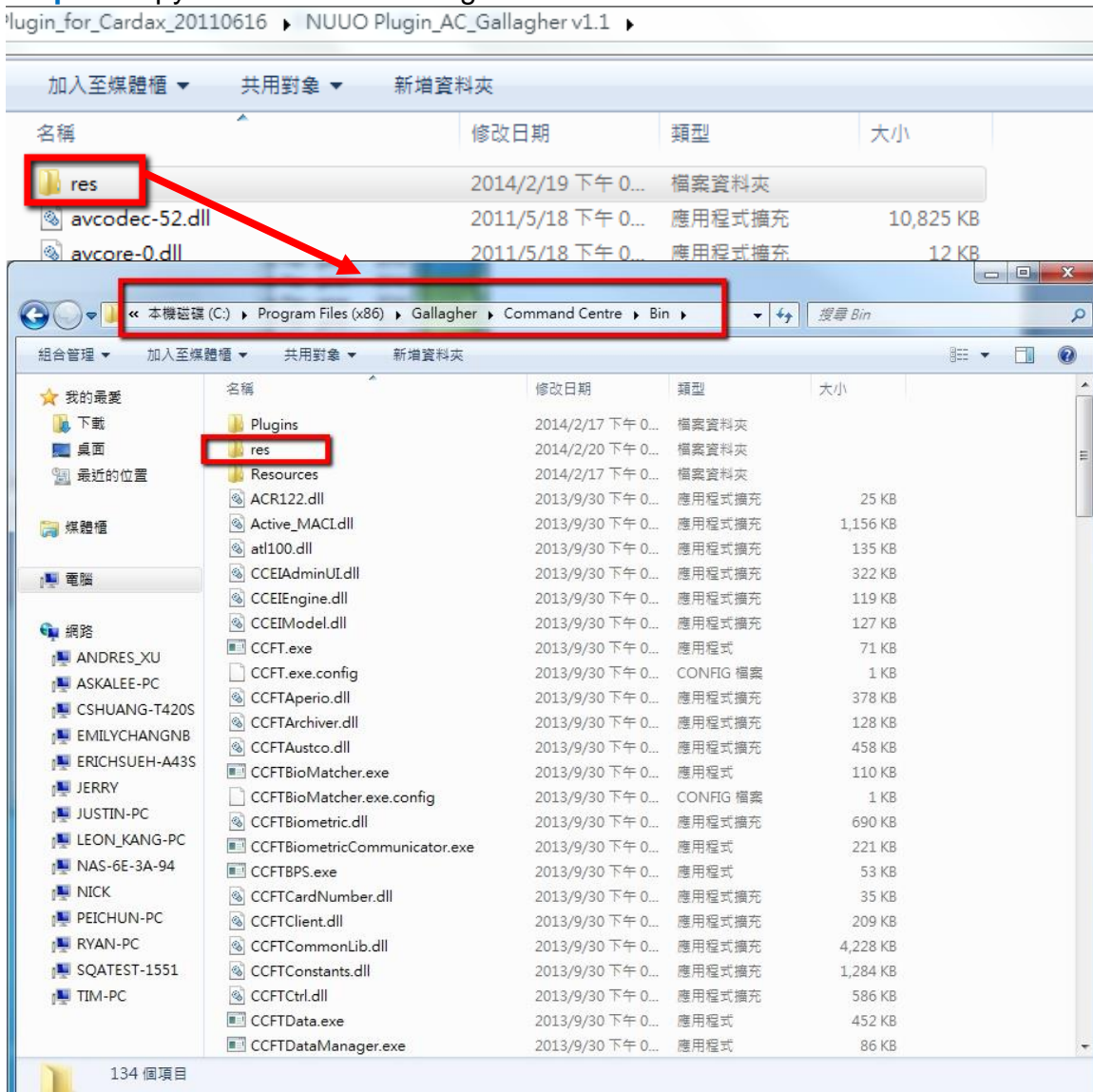
### Step 3: Execute RegisterCVanilla32. reg.

For Windows 32 bit, double click “RegisterCVanilla32.reg.”

For Windows 64 bit, double click “RegisterCVanilla64.reg.”



### Step 4: Copy “res” folder to Gallagher Command Centre installation folder.



**Step 5:** Install Gallagher Command Centre Software with selecting “Server” as the type of installation.

**Step 6:** Put the Command Centre License file into the C:\Windows folder.

**Note:** NUUO Mainconsole v5.0, Command Centre and Gallagher Controller must be in same LAN.

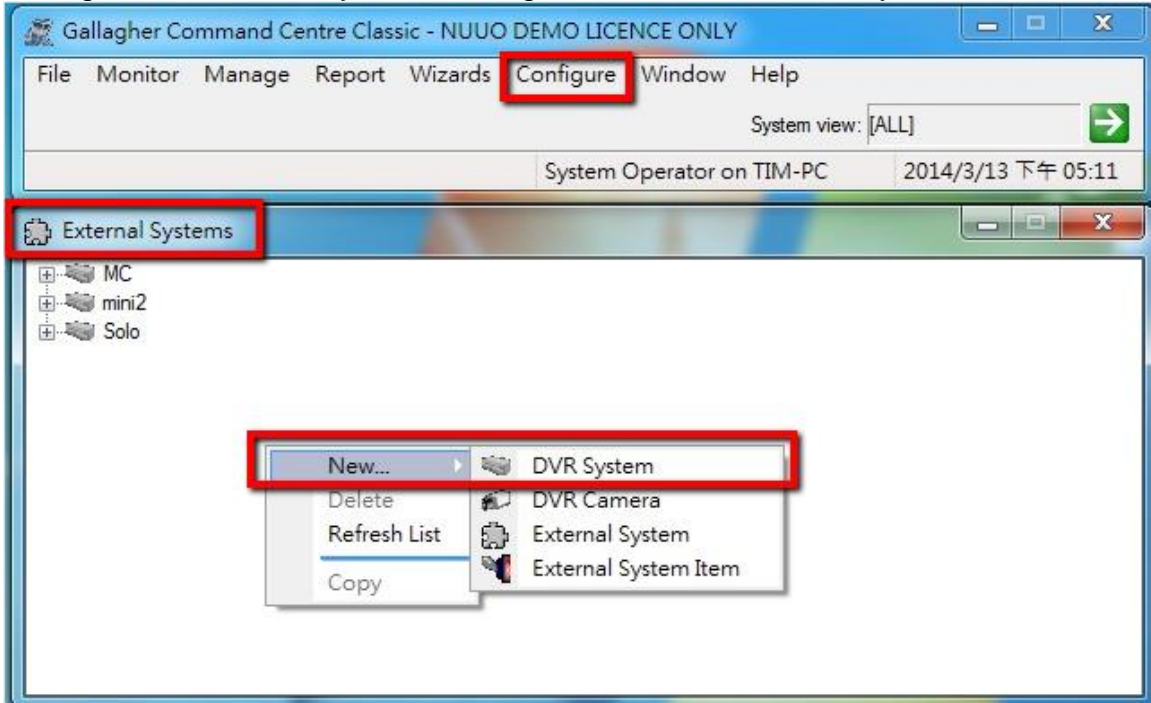
**Step 7:** Open Command Centre Classic



## IV. Live view

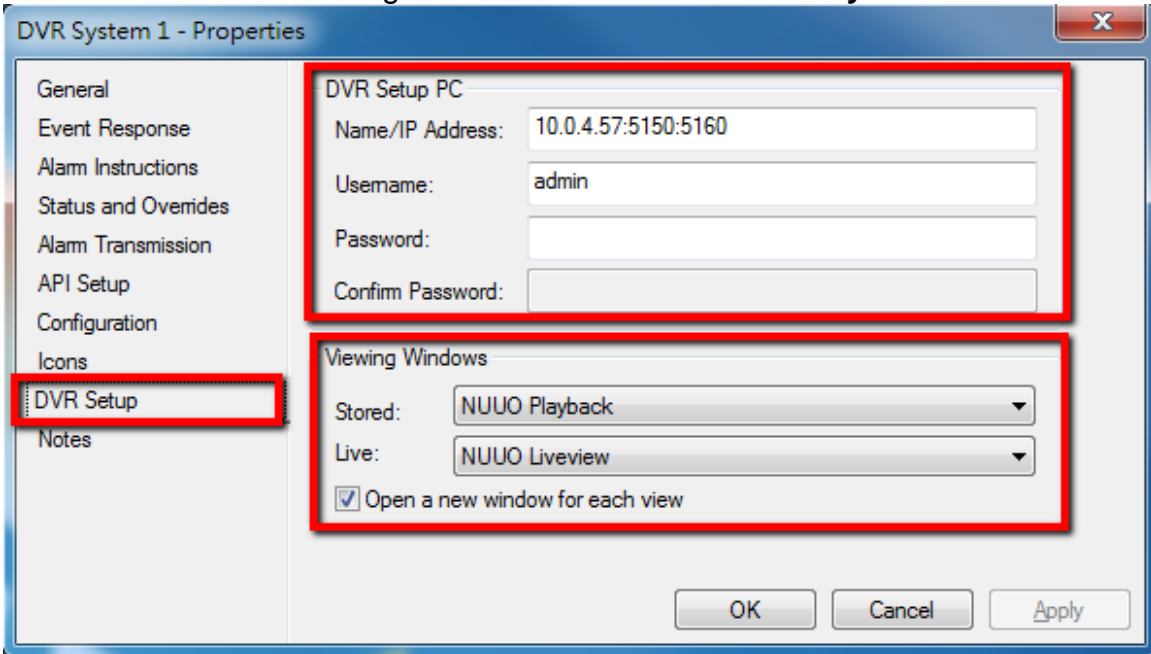
### Step 1: Add DVR System

Configure → External Systems → Right click “New” → DVR System

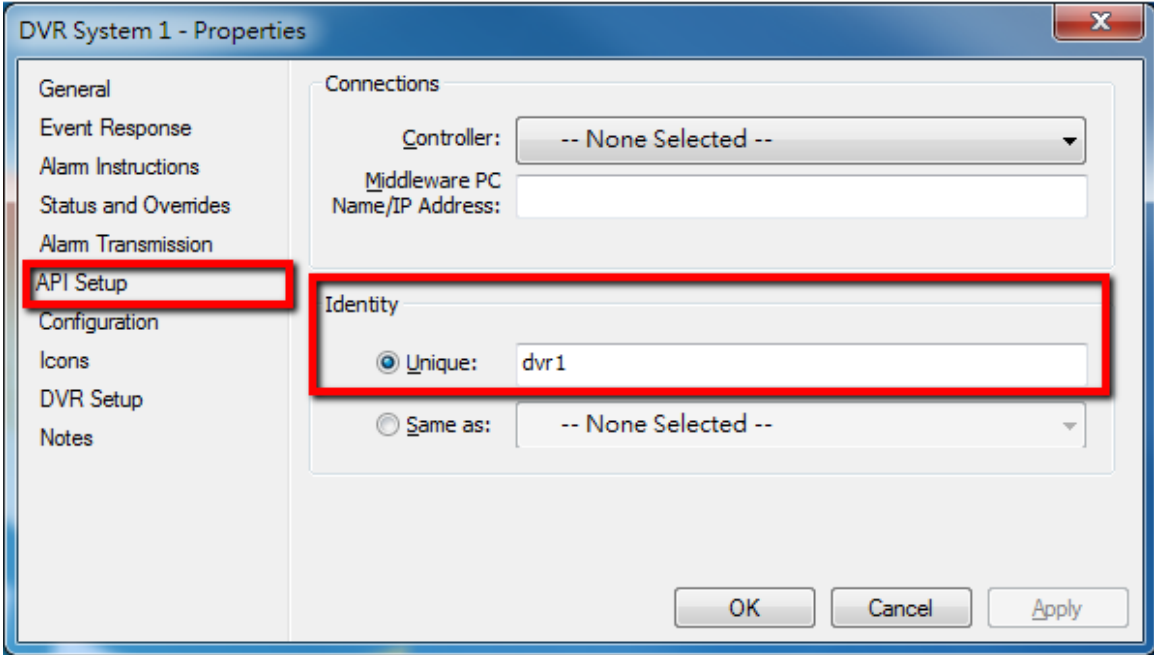


### Step 2: Configure DVR System

Double click on DVR System List → DVR Setup → Insert Mainconsole’s “IP address”, “Username” and “Password” → Viewing Windows → Select “NUUO Playback and Liveview”

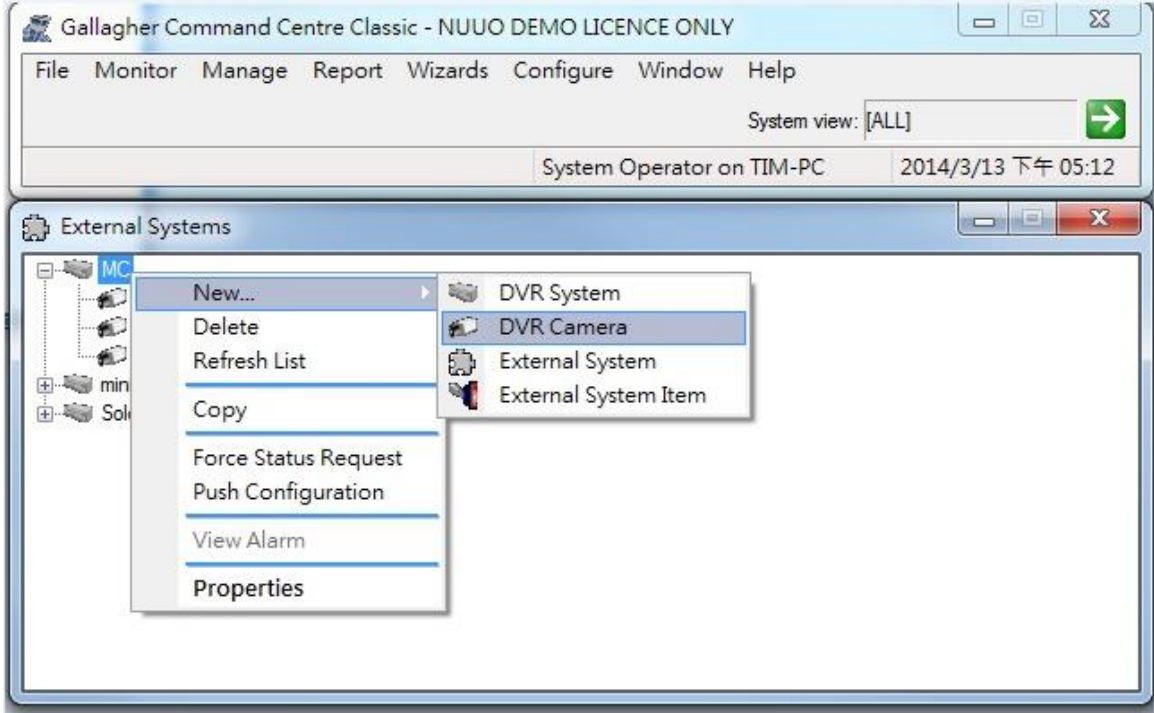


**Step 3:** API Setup → Identity → Unique → Insert a name for NUUO Mainconsole



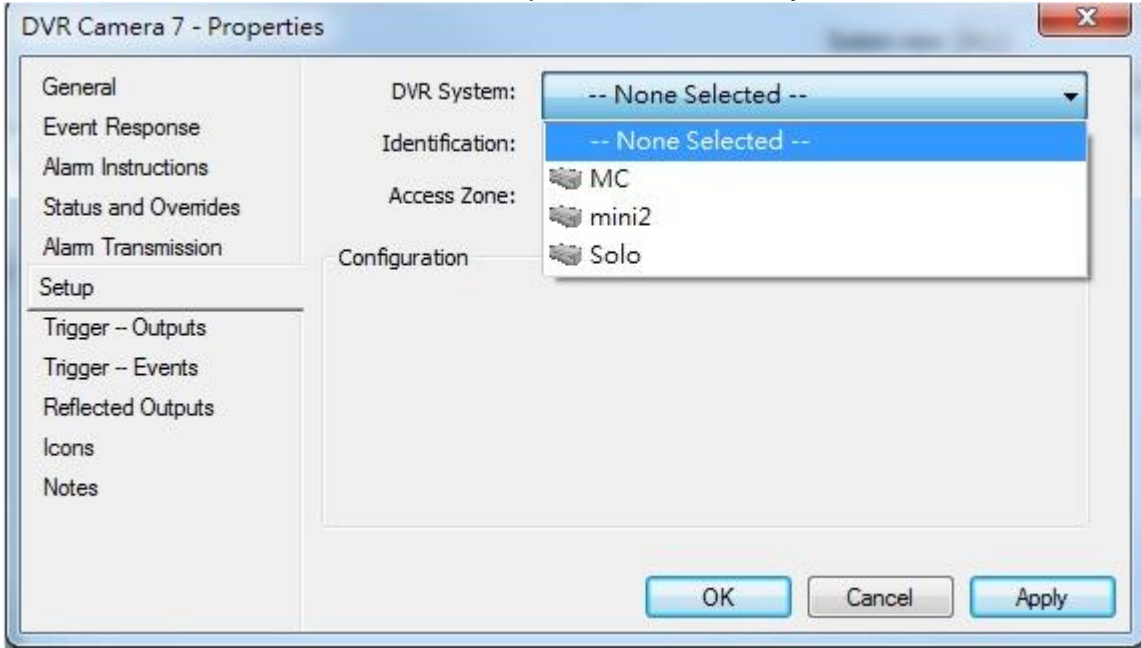
**Step 4:** Add new DVR Camera

External System → DVR System → Right click “New” → DVR Camera

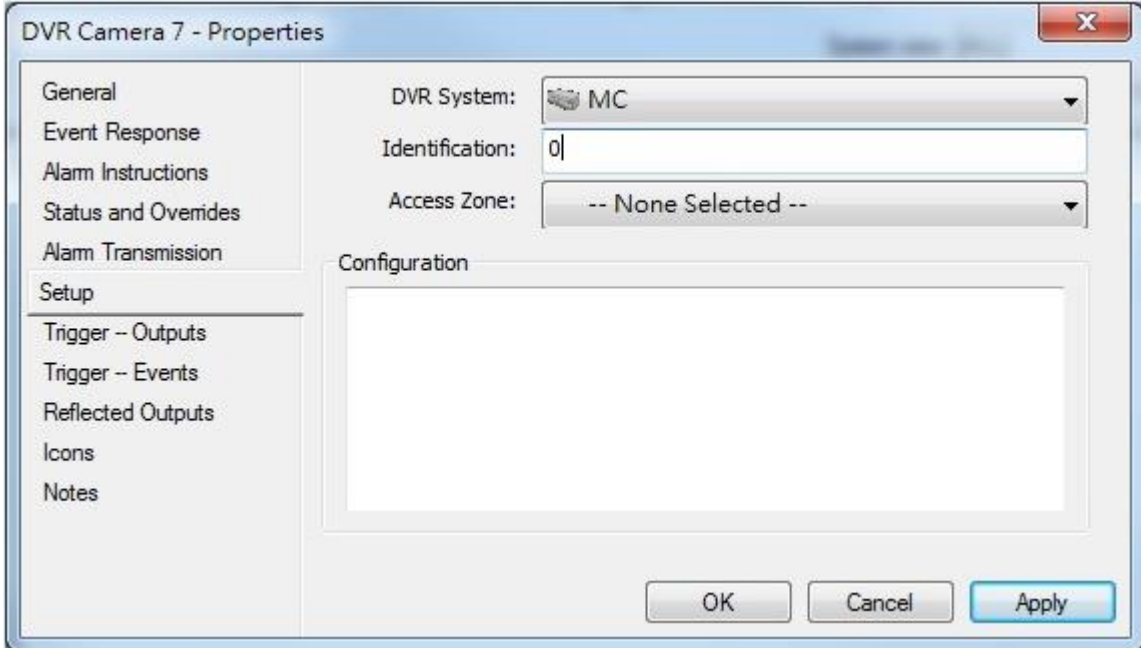


### Step 5: Configure DVR Camera

Double click on DVR camera → Setup → Select DVR System → Insert Identification

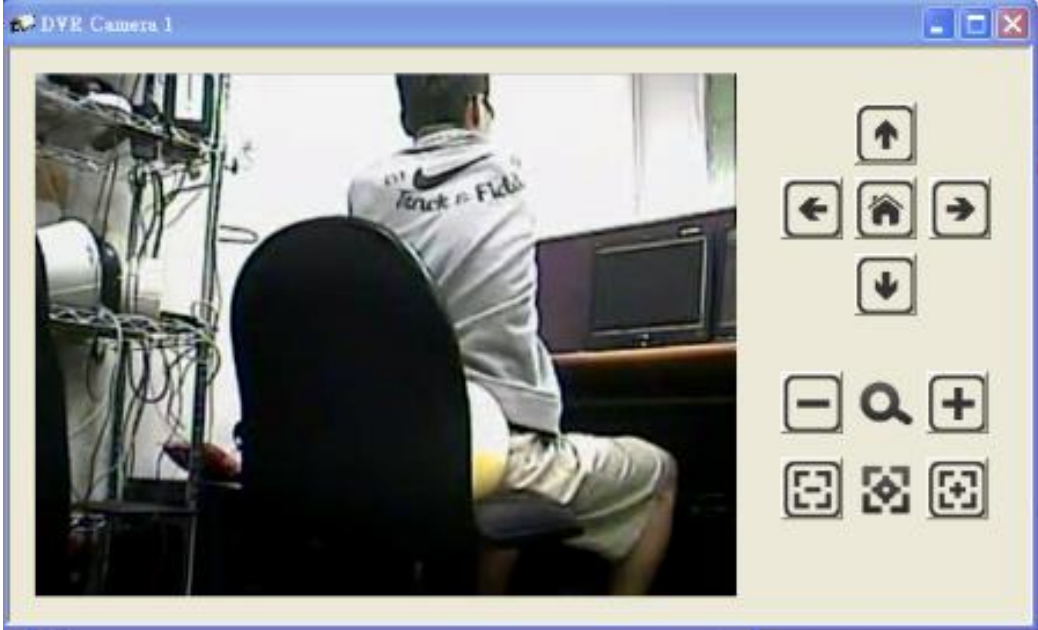


**Note:** Identification means the channel number. 0 refers to Chanel 1, 1 means Channel 2 and so on



### Step 6: Live Video Preview

Double left click on DVR Camera → Live view window pop-up



Resolution: 480x300

Icon definition:

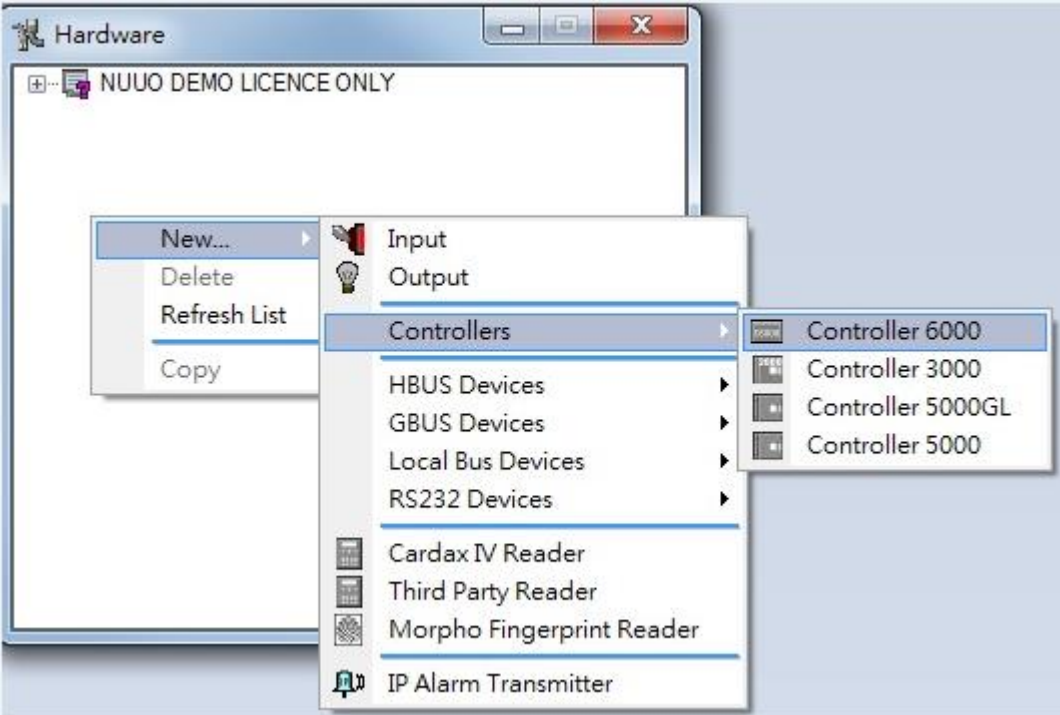
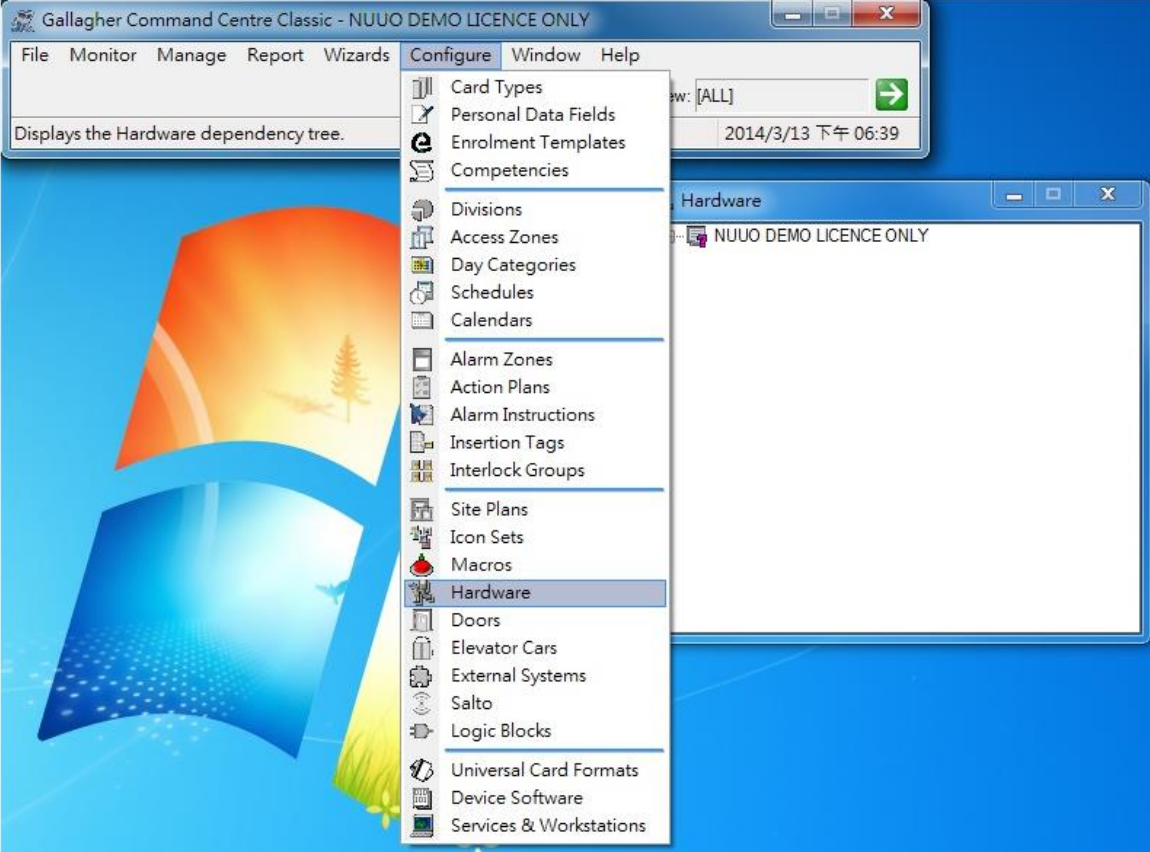
	PTZ Up		Zoom in
	PTZ Down		Zoom out
	PTZ Left		Focus near
	PTZ Right		Focus far
	Home		



## V. Playback

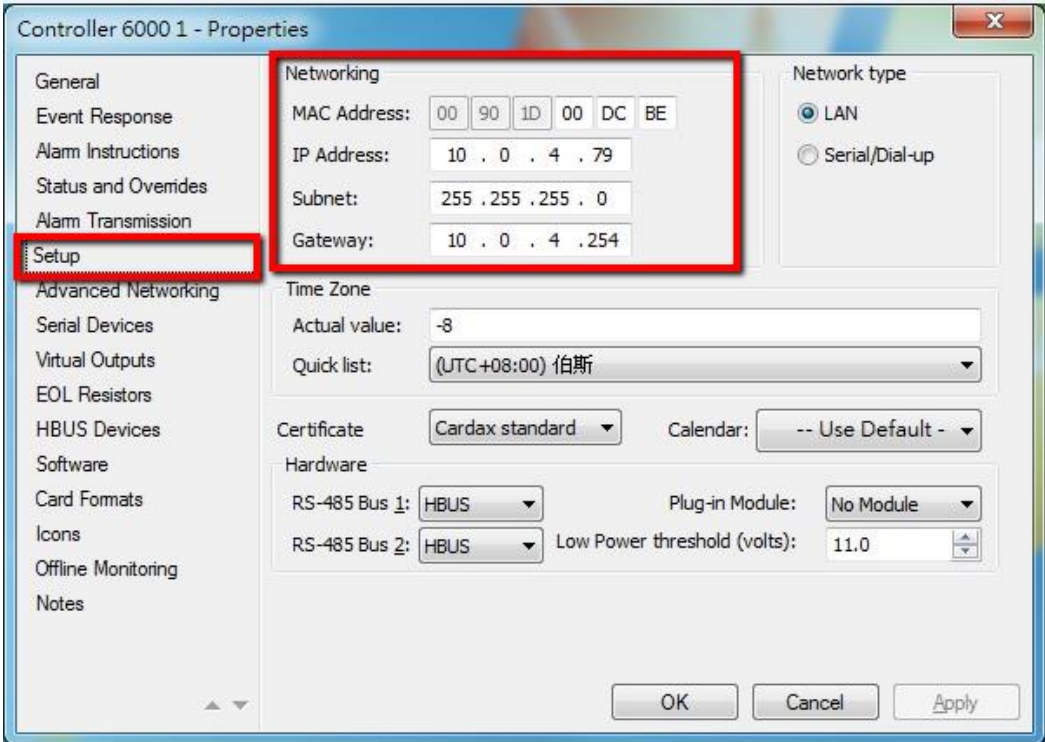
### Step 1: Add Controller

Configure → Hardware → Right click “New” → Select Controller



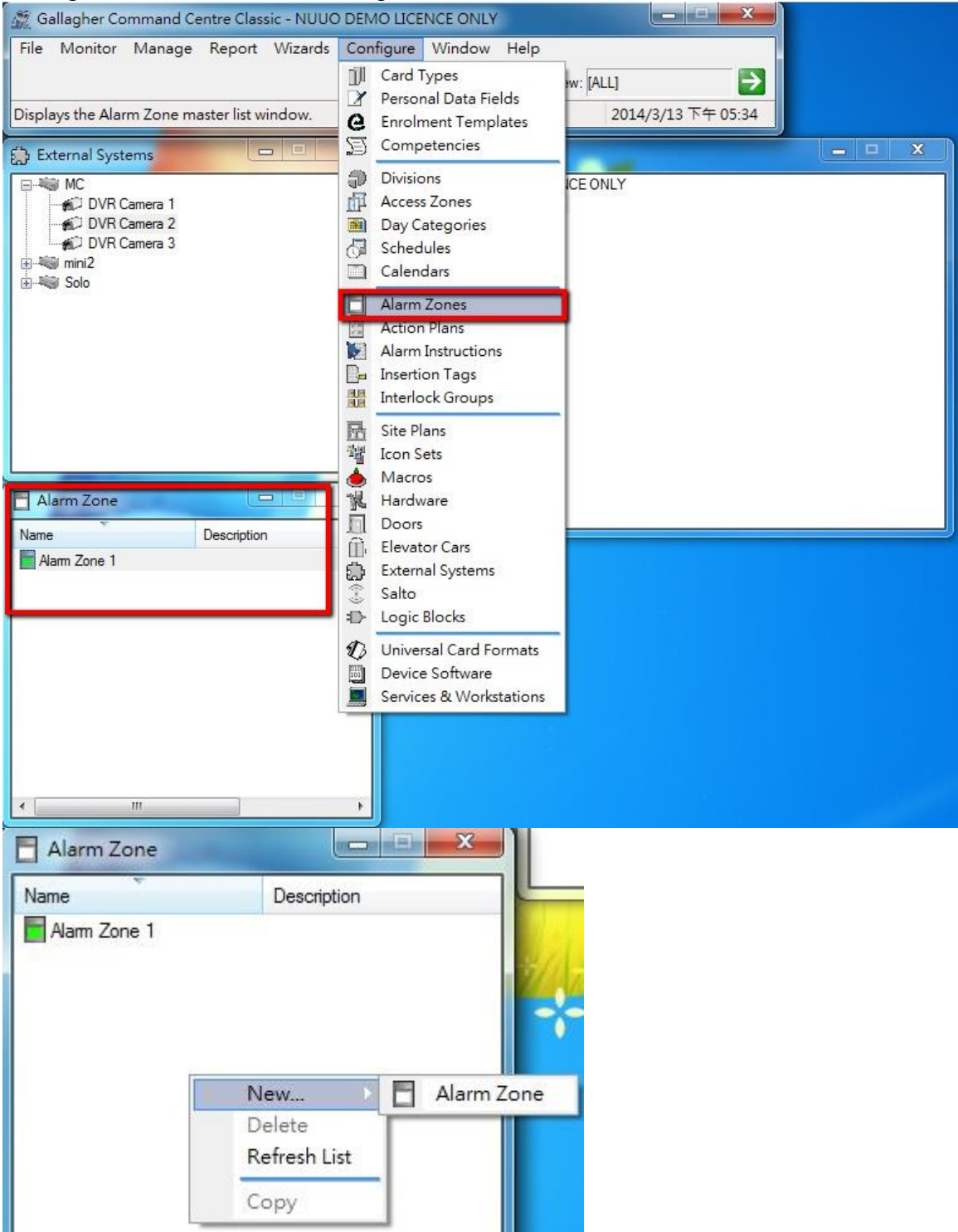
## Step 2: Configure Controller

Double click on Controller → Setup → Insert Controller “MAC Address”, “IP Address”, “Subnet” and “Gateway”



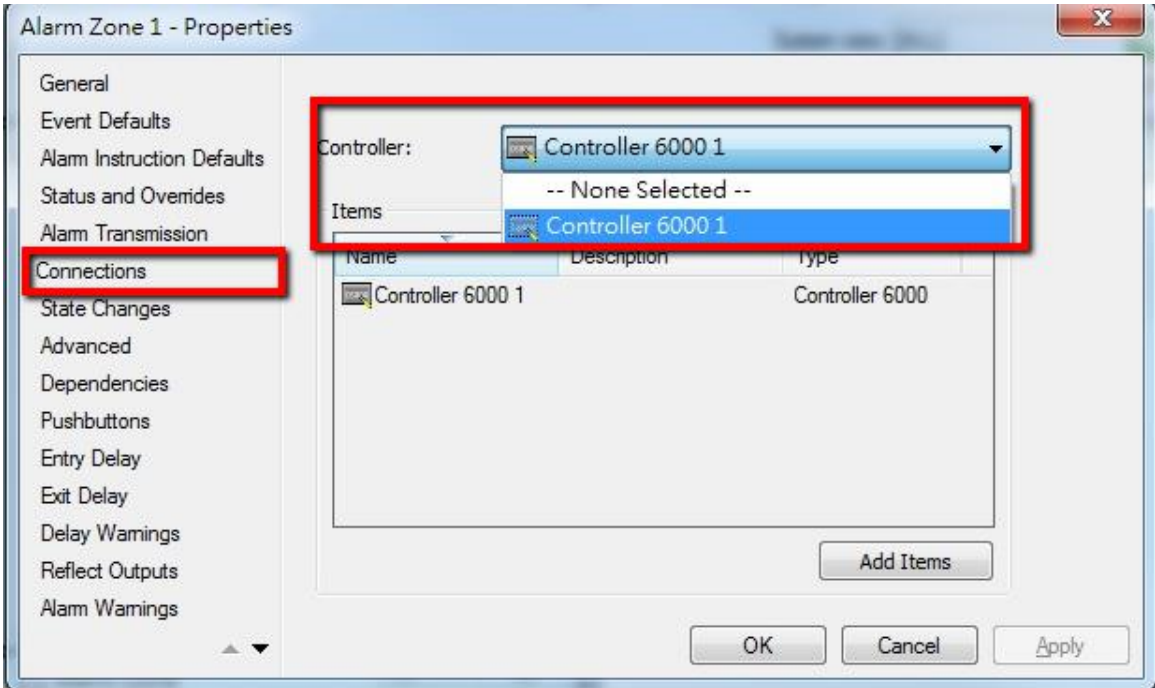
### Step 3: Add Alarm Zone

Configure → Alarm Zones → Right click “New” → Alarm zone



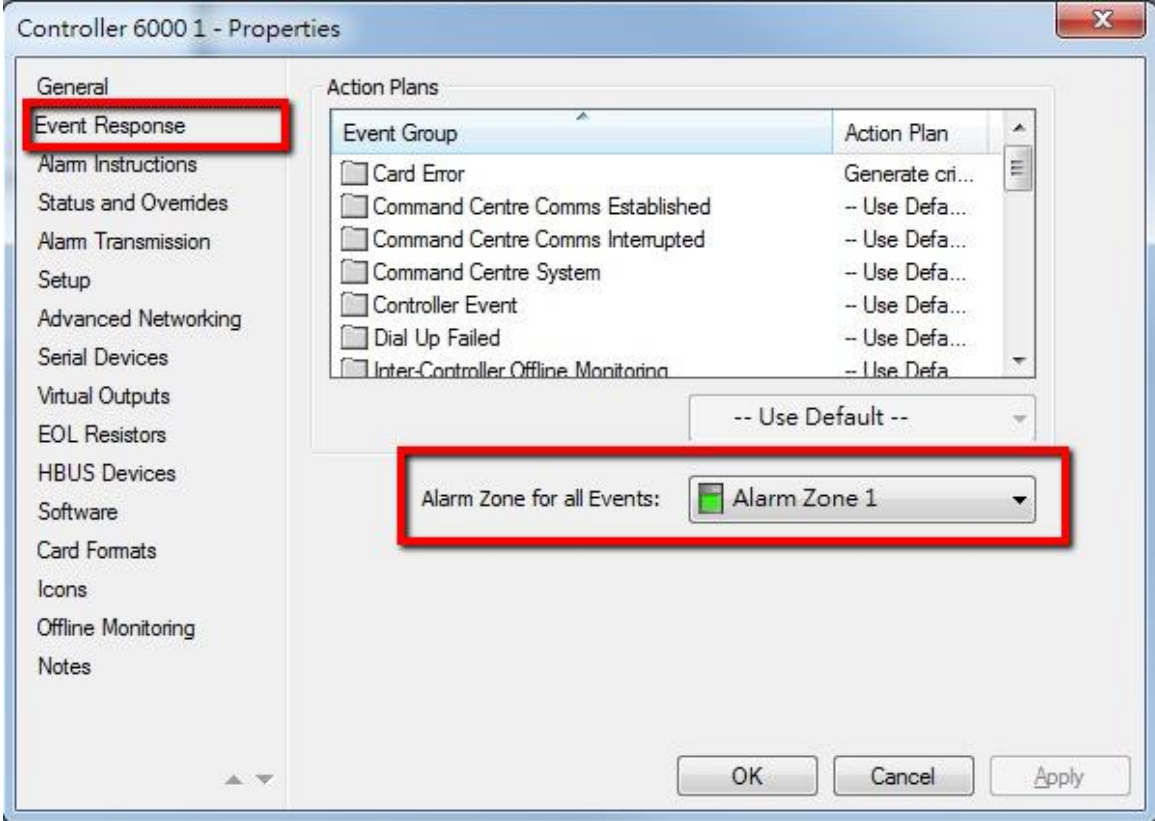
**Step 4: Configure Alarm Zone**

Double click on Alarm Zone list → Connections → Select Controller



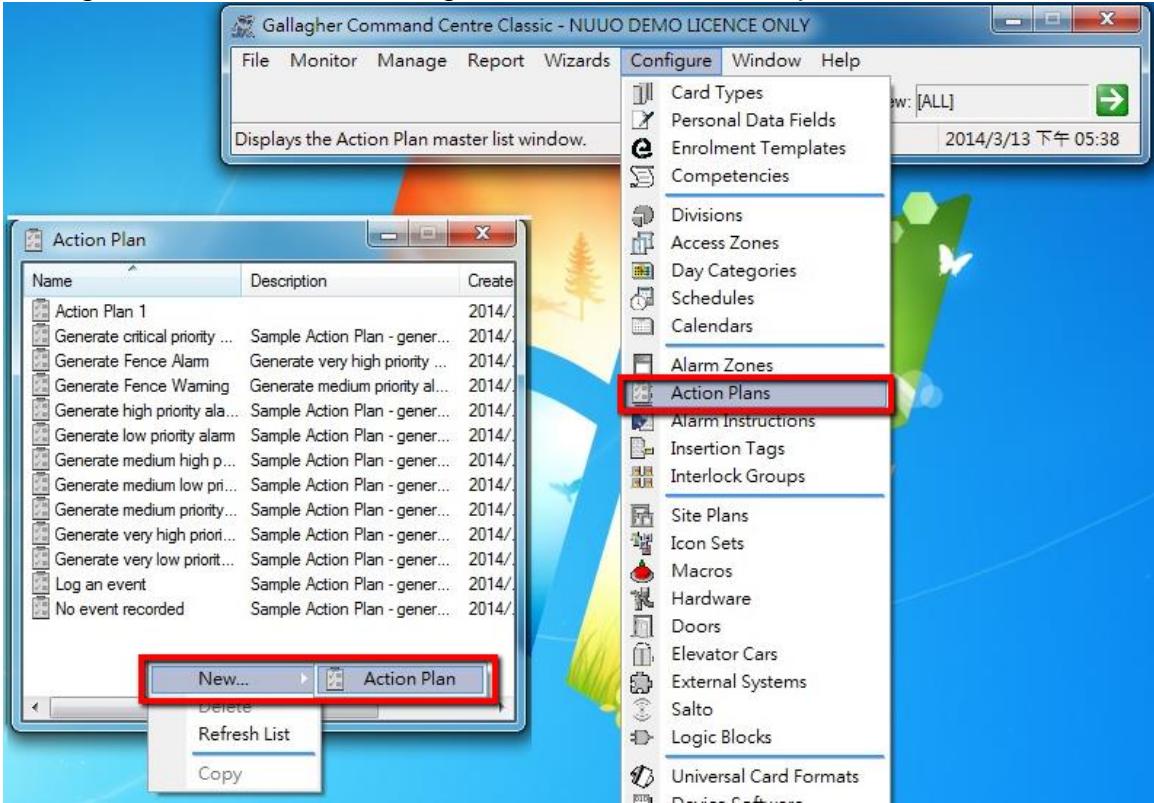
**Step 5: Setup Controller event**

Double click on controller list → Event Response → Select Alarm Zone



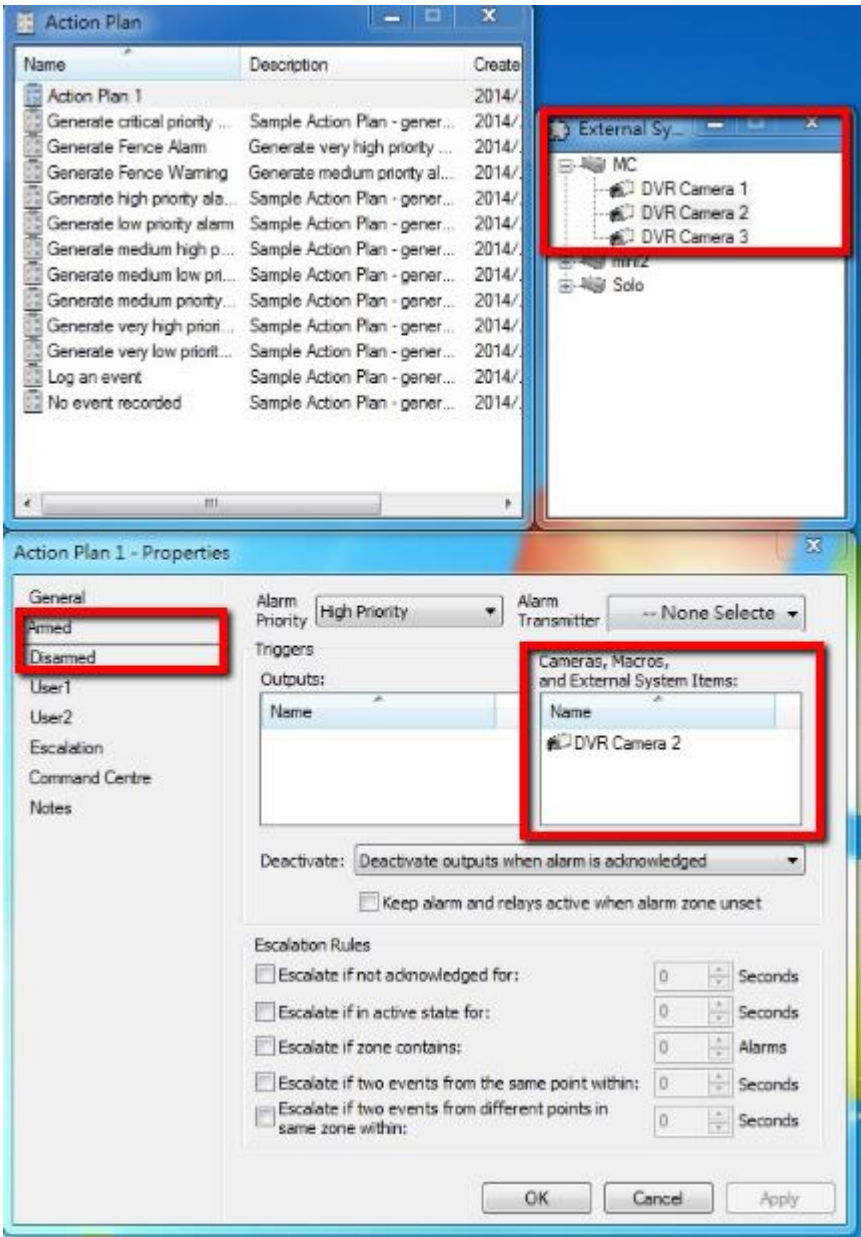
### Step 6: Add Action Plan

Configure → Action Plans → Right click “New” → Action plan



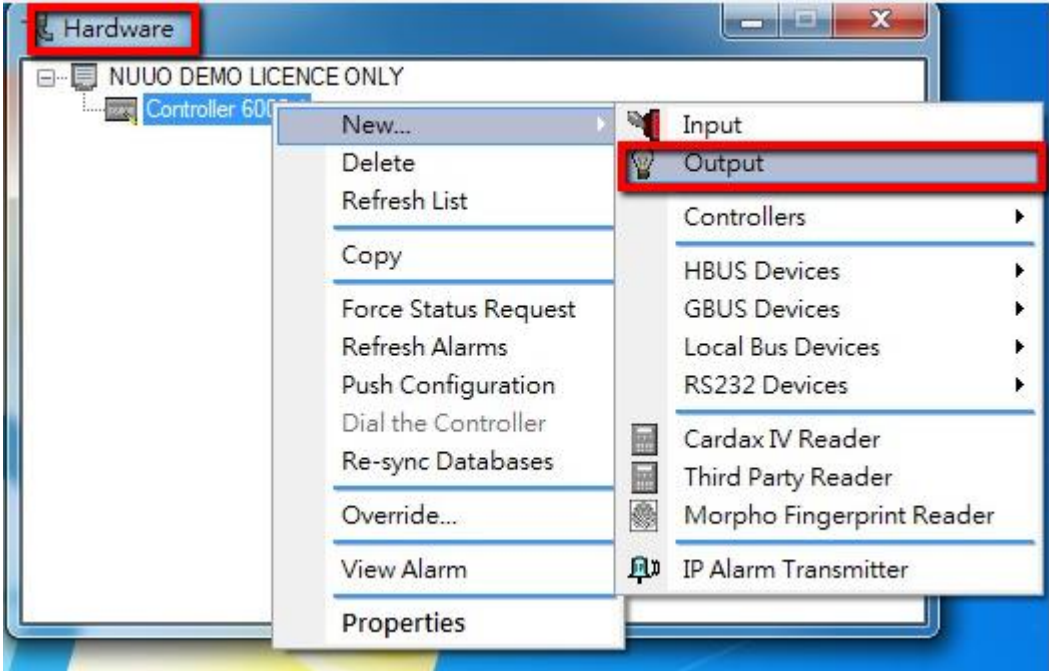
### Step 7: Configure Action Plan

Armed → Copy or drag DVR camera to “Cameras, Macros and External System Items”. Same for Disarmed



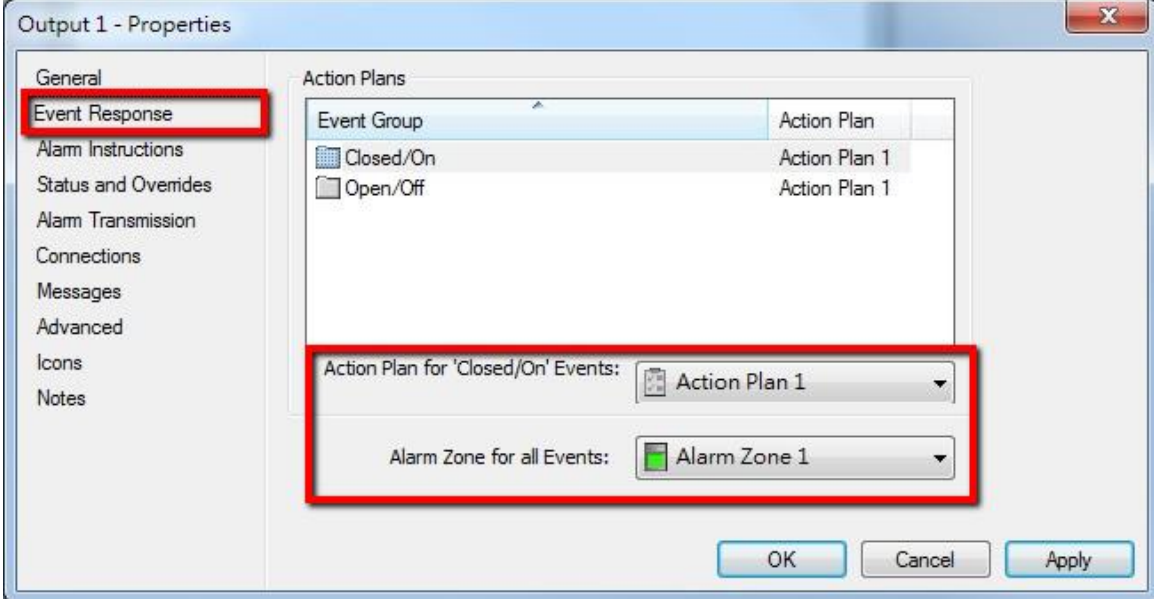
### Step 8: Add Output

Configure → Hardware → Controller → Right Click “New” → Output

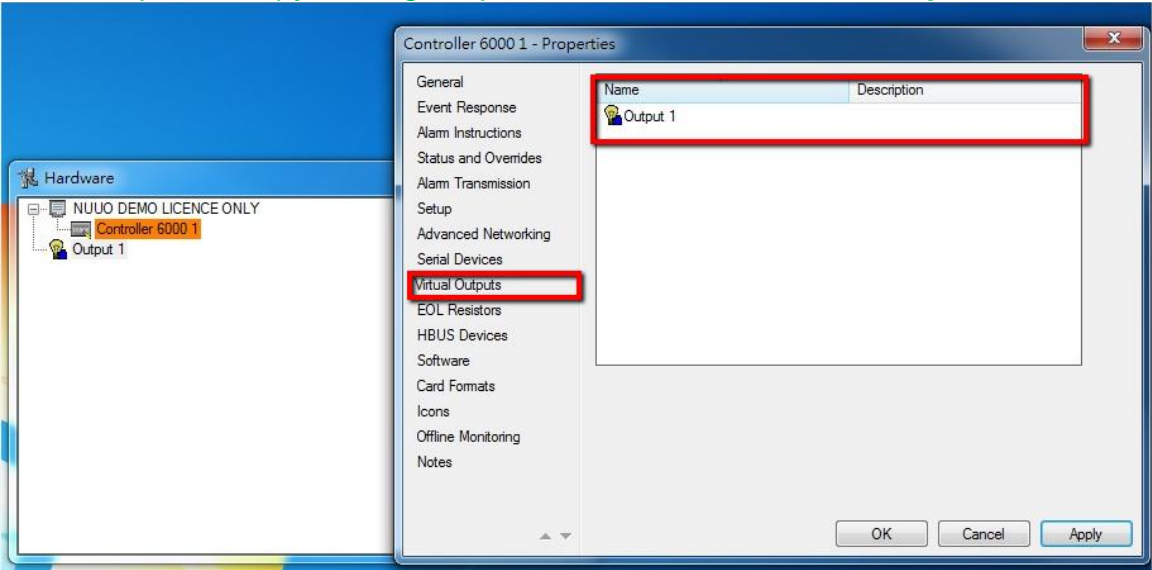


### Step 9: Configure Output Event

Double click output list → Event Response → Select “Action Plan” and “Alarm Zone”

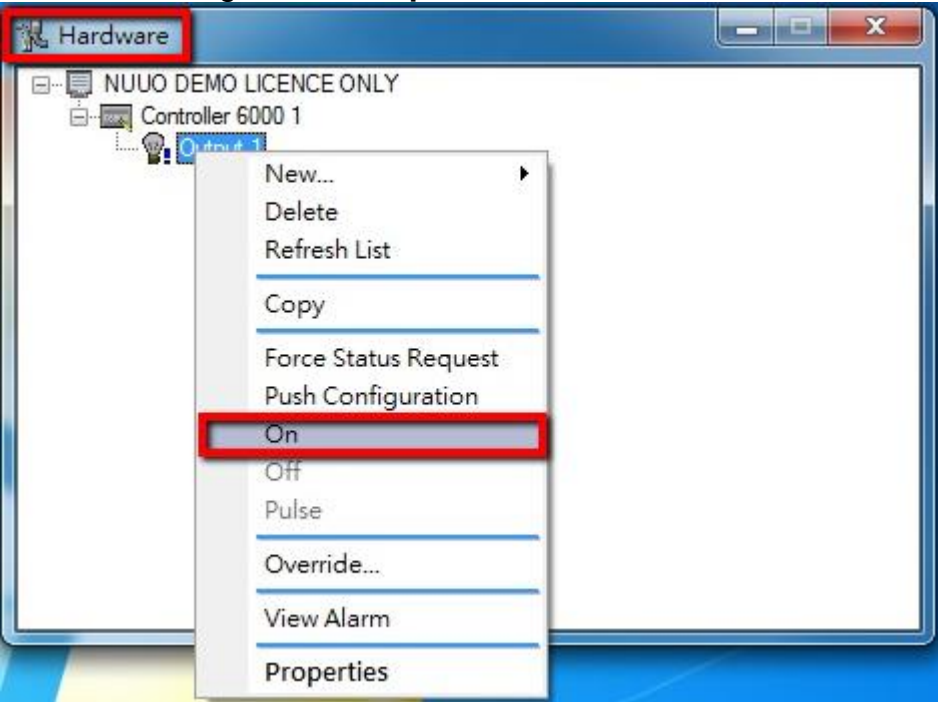


*Note: If you don't have physical output device or you'd like to trigger output from Command Centre software, please copy or drag Output to "Controller→Virtual Outputs"*



### Step 10: Trigger Output Event

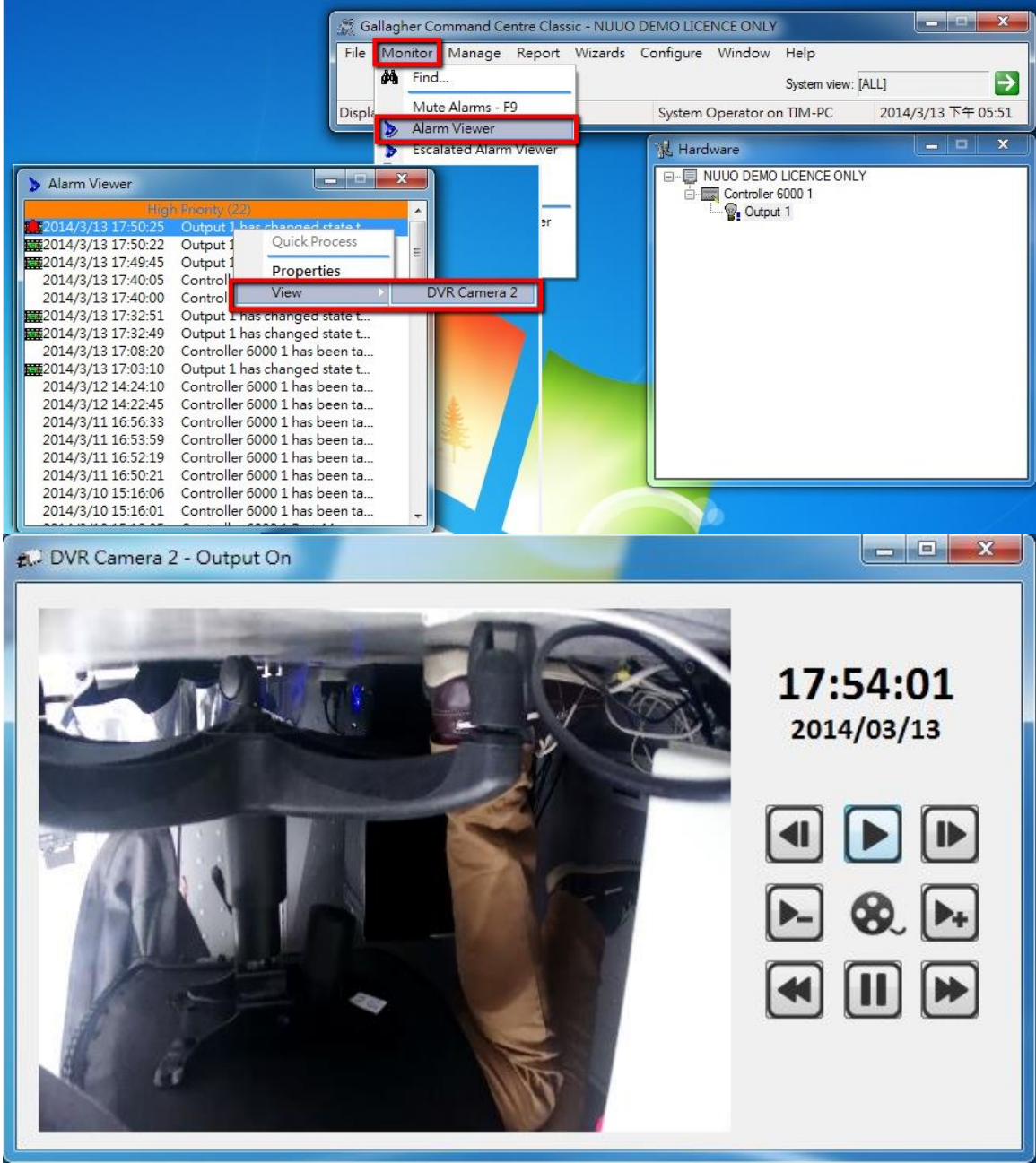
Hardware → Right click "Output" → On or Off





### Step 11: View playback

Monitor → Alarm Viewer → Select alarm → Right click “View” → DVR Camera → Playback window pop-up



**Resolution:** 480x300

**Icon definition:**

	Step backward		Speed up
	Play		Rewind (Previous Interval)
	Step forward		Pause
	Speed down		Fast forward (Next Interval)