

Table Content

I. Intruption	2
II. Product Info	2
III. System Architecture	2
IV. Soyal 701 Server Setup	3
V. NUUO Bridge_TCP Server_Soyal Setup	5
VI. NUUO Mainconsole Configuration	8

I. Intruaction

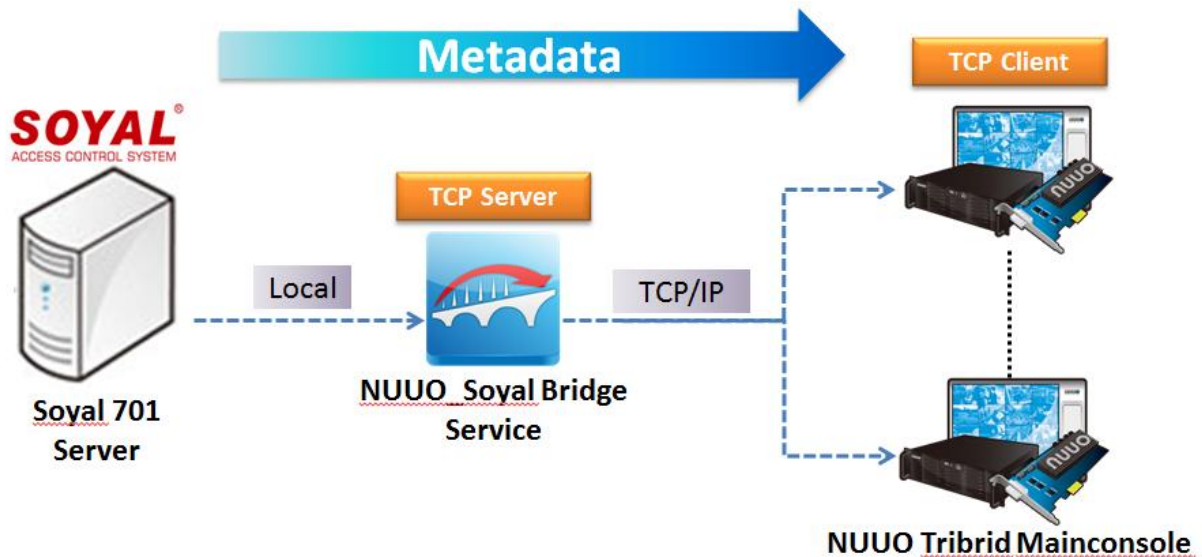
Soyal Access Control System has been integrated with *NUUO MainConsole* (NVR IP+, Hybrid NDVR, DVR card), coporating to provide an interface between the two platforms, to provide access control metadata and events for NUUO solutions.

NUUO – Soyal interface allows access device information and events from *Soyal* server to be accessed within the *NUUO* Software.

II. Product Info

Item	Version	Compatible Server
NUUO Bridge_TCP Server_Soyal	V1.2	- Mainconsole v4.0 and above - Soyal 701 Server / Client v8.03 and above

III. System Architecture




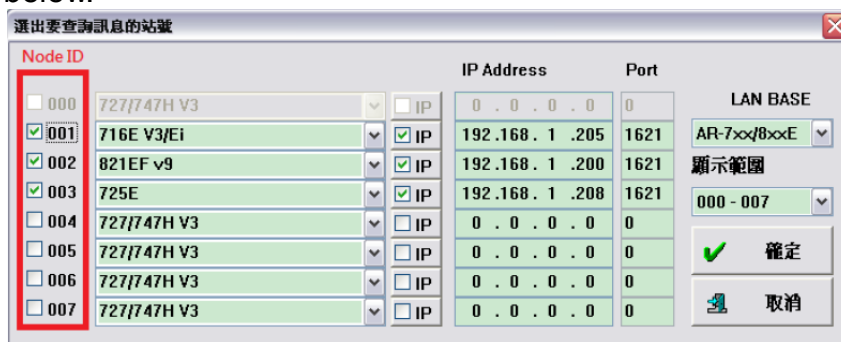
IV. Soyal 701 Server Setup

Step 1: Install Soyal 701 Server (software) Login as: supervisor / supervisor


Note: If you forget the password, delete file "Login.dat" and the password will recover to the default setting.

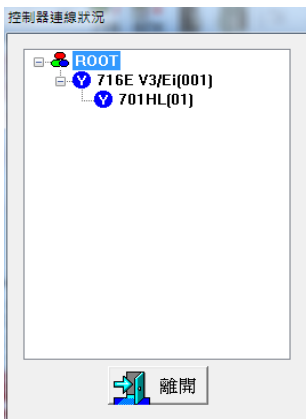


Step 2: Click  to add "Door". Please select the correct door model and input its IP address as below.



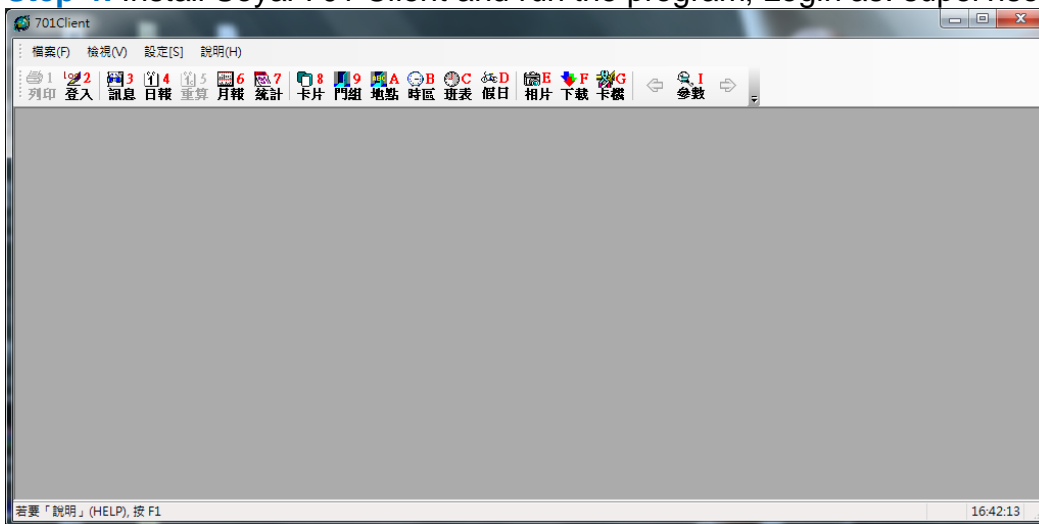
Note: Set Node ID and Door ID on Soyal Controller device. Node ID is for every controller; Door ID is for every reader.

Step 3: Click  to make sure the linkage is available. Take "716 V3/Ei" for example; you will see this model listed on the connection status.



Note: For more detail of ID setup, please refer to Soyal Access Control's user manual.

Step 4: Install Soyal 701 Client and run the program; Login as: supervisor / supervisor



Step 5: Swipe the ID card and the log shall be shown on the window if the card was detected successfully.



V. NUUO Bridge_TCP Server_Soyal Setup

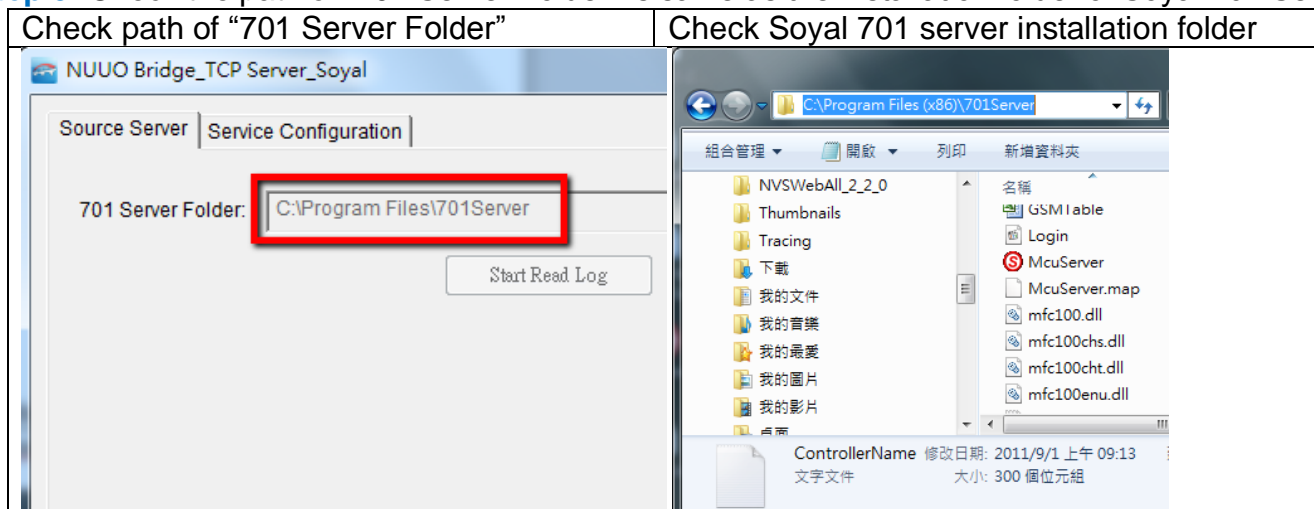
Step 1: Download NUUO Bridge_TCP Server_Soyal v1.2 .zip from NUUO [website](#) and unzip the file.

Step 2: Install NUUO Bridge Software under C:\ of Soyal 701 Server and run the **NUUO Bridge_TCP Server_Soyal.exe**



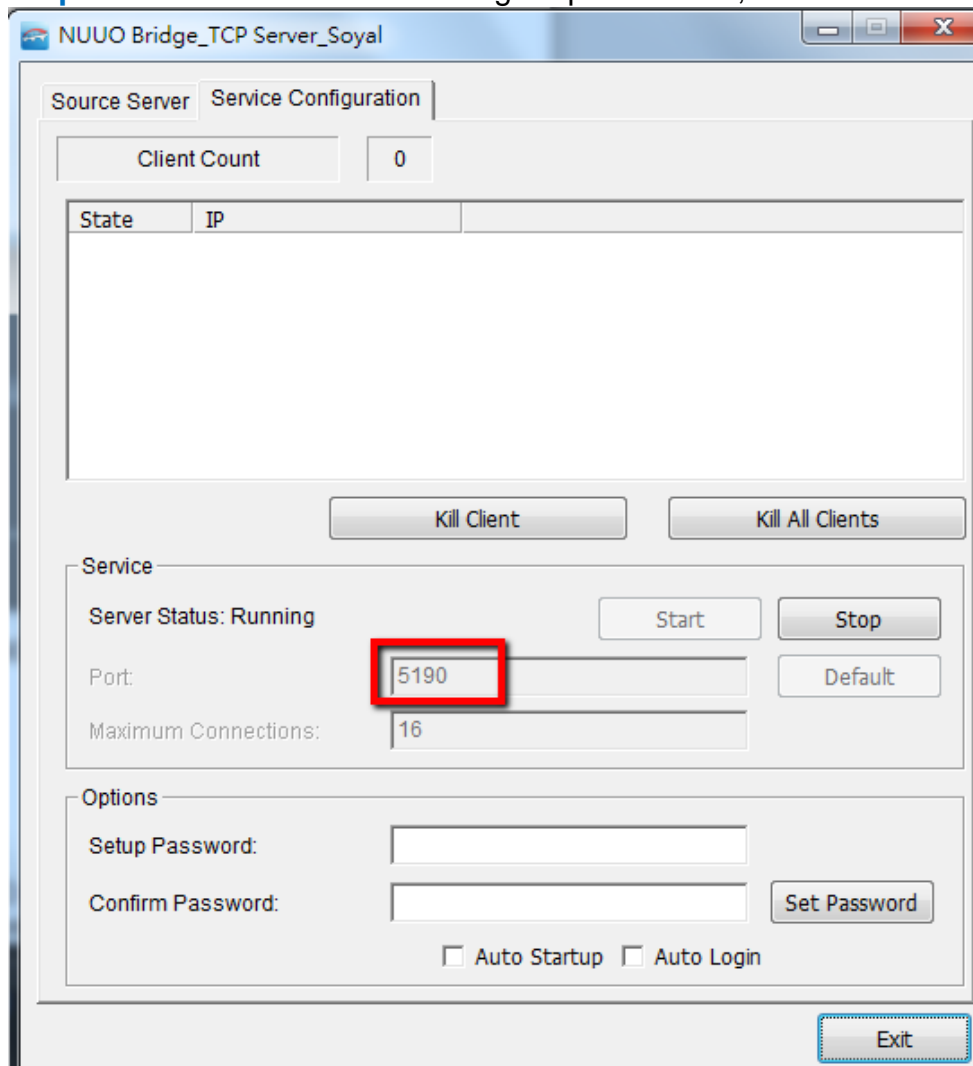
名稱	修改日期	類型	大小
CCURE800Config.cfg	2012/11/15 下午 ...	CFG 檔案	1 KB
mfc42.dll	2011/5/5 下午 04...	應用程式擴充	973 KB
MFC42LOC.DLL	2011/5/5 下午 04...	應用程式擴充	36 KB
mfc80.dll	2011/5/5 下午 04...	應用程式擴充	1,076 KB
mfc80u.dll	2011/5/5 下午 04...	應用程式擴充	1,068 KB
mfc80u.dll	2011/5/5 下午 04...	應用程式擴充	68 KB
mfc80u.dll	2011/5/5 下午 04...	應用程式擴充	57 KB
Microsoft.VC80.CRT.manifest	2011/5/5 下午 04...	MANIFEST 檔案	2 KB
Microsoft.VC80.MFC.manifest	2011/5/5 下午 04...	MANIFEST 檔案	3 KB
msvc80.dll	2011/5/5 下午 04...	應用程式擴充	468 KB
msvc60.dll	2011/5/5 下午 04...	應用程式擴充	393 KB
msvc80.dll	2011/5/5 下午 04...	應用程式擴充	536 KB
msvcr80.dll	2011/5/5 下午 04...	應用程式擴充	612 KB
msvcrt.dll	2011/5/5 下午 04...	應用程式擴充	316 KB
net.dll	2011/11/30 下午 ...	應用程式擴充	592 KB
NUUO Bridge_TCP Server_Soyal.exe	2014/4/18 上午 1...	應用程式	1,772 KB

Step 3: Check the path of “701 Server Folder” is same as the installation folder of Soyal 701 Server.



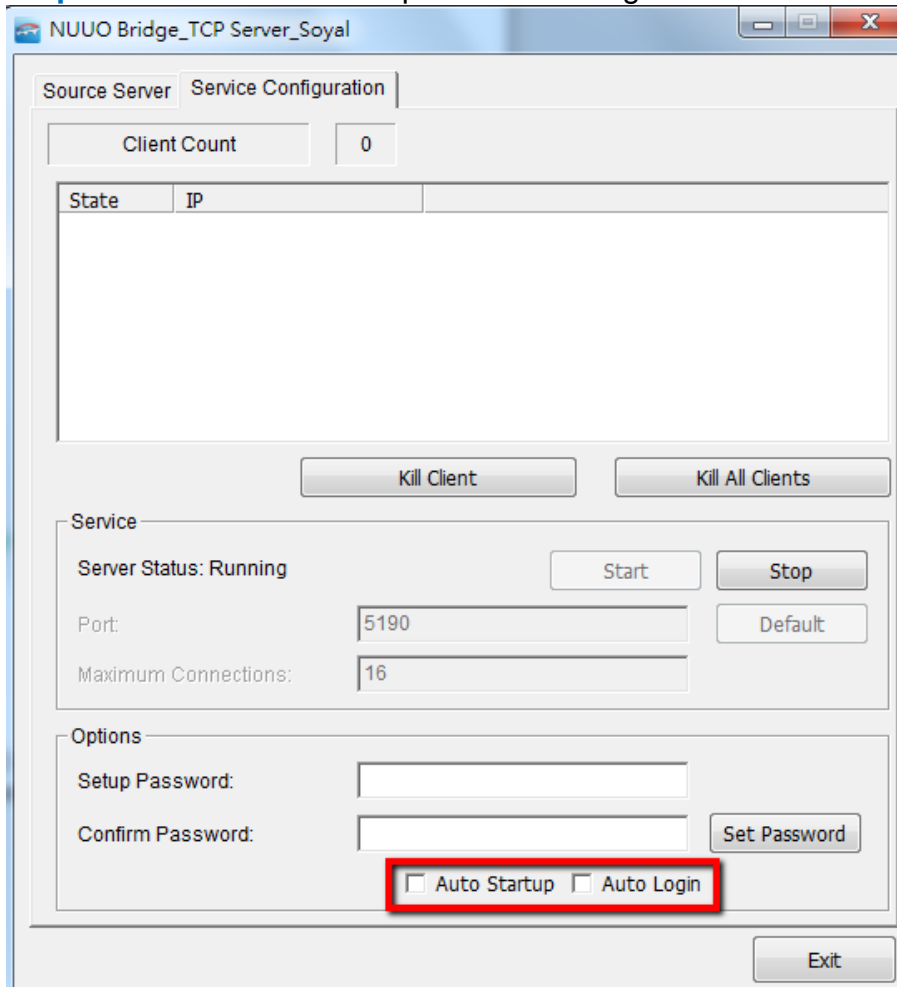
Note: NUUO Bridge Software would Start Read Log from Soyal 701 server automatically when Bridge starts up.

Step 4: Start the service and configure port number, default is 5190.



Note: NUUO Bridge Software would start running automatically when Bridge starts up.

Step 5: Enable “Auto Startup” and “Auto Login”

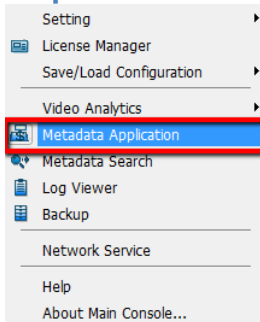


Note:

- (1) NUUO Bridge Software would automatically start up and login when PC restarts.
- (2) Auto Startup function must be running with administrator privilege

VI. NUUO Mainconsole Configuration

Step 1: Run “Mainconsole” & “NUUO Bridge_AC_Soyal .exe”

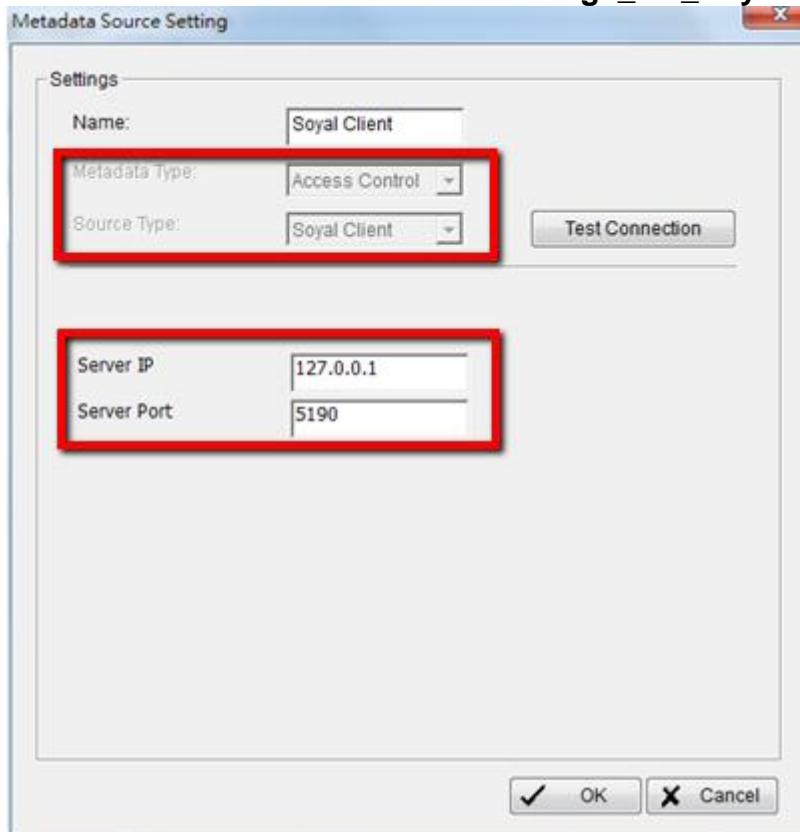


Step 2: Add Metadata Source

Set Metadata Type as “Access control”

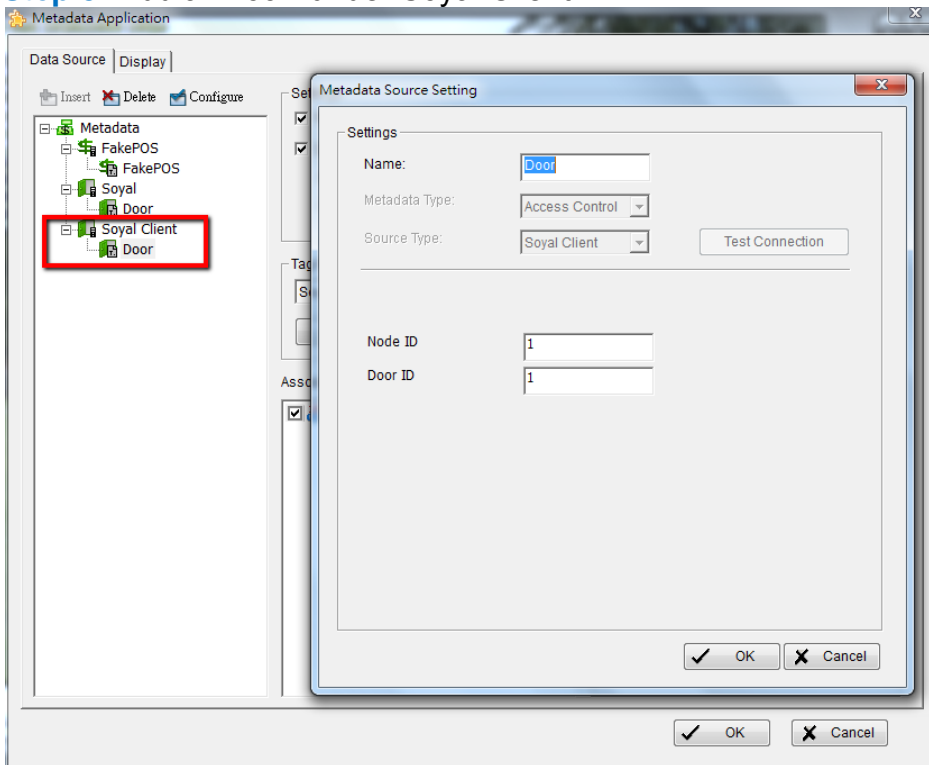
Set Source Type as “Soyal Client”

Insert Server IP and Port of “NUUO Bridge_AC_Soyal .exe” which installs in “Soyal 701 Server”



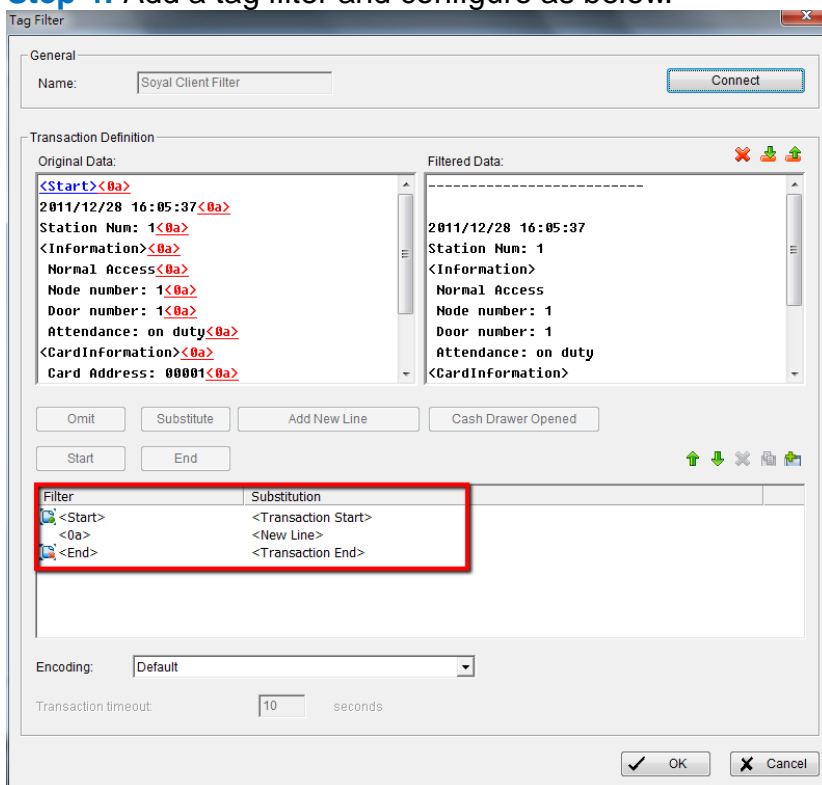
Note: If the “Soyal 701 Server” and “NUUO Mainconsole” are installed in same PC, please insert “127.0.0.1” or “localhost” as Server IP

Step 3: Add a "Door" under Soyal Client.



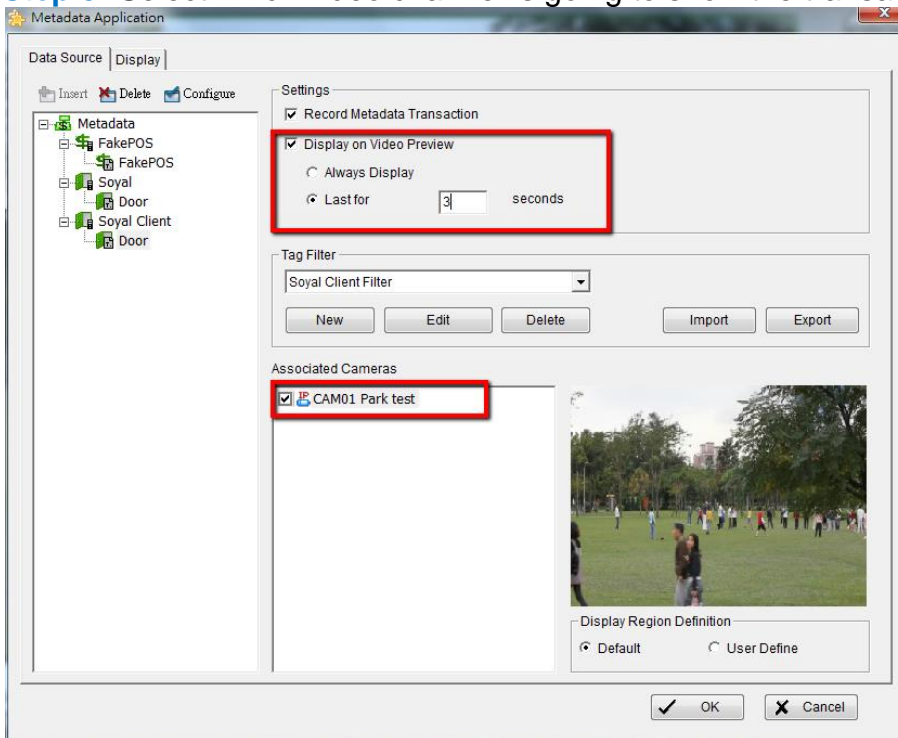
Note: Please refer the configuration of Node ID and Door ID in Soyal user manual

Step 4: Add a tag filter and configure as below.



Note: "Transaction Start" "Transaction End" and "New Line" are the MUST filters.

Step 5: Select which video channel is going to show the transaction and define the display time.



Step 6: Swap the card on the “Door” (reader) again and user shall see the transaction on the live image.

