

2014/2/17

## **Project Name: Graham-Backup to USB SRS**

2014/2/17

## Revision History

Date	Version	Description
2014/2/17	1.0	1 <sup>st</sup> version

## Background and Project Info:

### Background:

On this project, users can't plug in USB to computer for the concern of system privilege control, so they need to auto and manual backup important video file directly from Titan USB port to external hard drive.

The project has 220 site with 26 channels per server. The resolution of cameras is 1280×720 for indoor cameras and 800 × 600 for outdoor cameras. All cameras are recording at 10fps.

Project info	
Product and version	Titan v1.x
Model	NT-4040R/NT-8040R
Site and server	220 site, total 220 server
Camera channels	220x26CH per server=5729CH

## Features Required:

1. External hard drive auto-mount when plug in it to Titan USB port.
2. Manual backup to external hard drive directly from Titan USB port.  
→ Backup frequency: Weekly
3. Auto backup to external hard drive directly from Titan USB port  
→ Backup frequency: Daily
4. System will do manual or auto backup separately at one time.

2 / 5

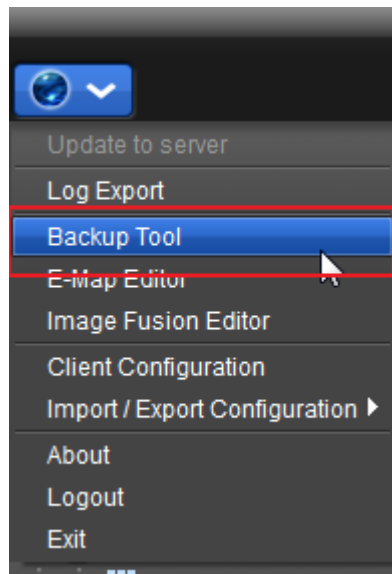
2014/2/17

5. External hard drive model: Seagate external HDD 2TB 3.0 USB-STBV2000300

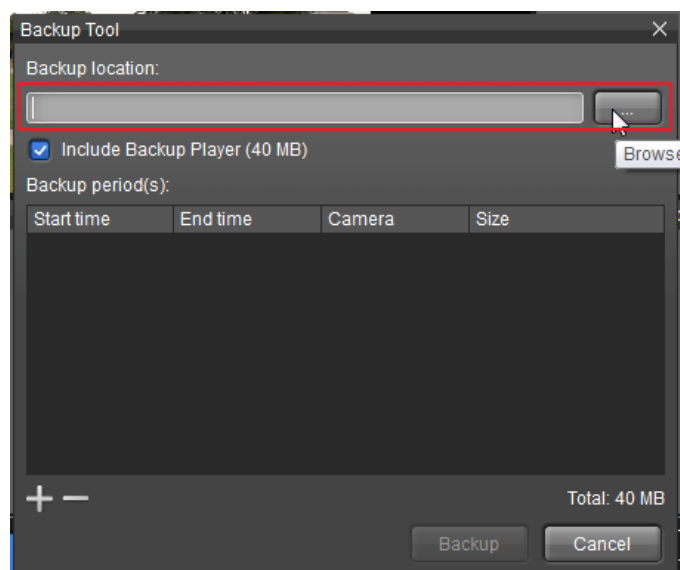
<http://www.seagate.com/in/en/external-hard-drives/desktop-hard-drives/expansion-hard-drive/?sku=STBV2000300>

## User Interface and detailed spec:

1. Manual backup: Same as NuClient manual backup interface  
→ Go to NuClient -> Global icon -> Backup Tool



- Assign Titan auto-mounted external hard drive path as backup location.  
The path is: \\titanserver\Public\



2014/2/17

2. Auto backup: Same as Titan web setting page auto backup interface

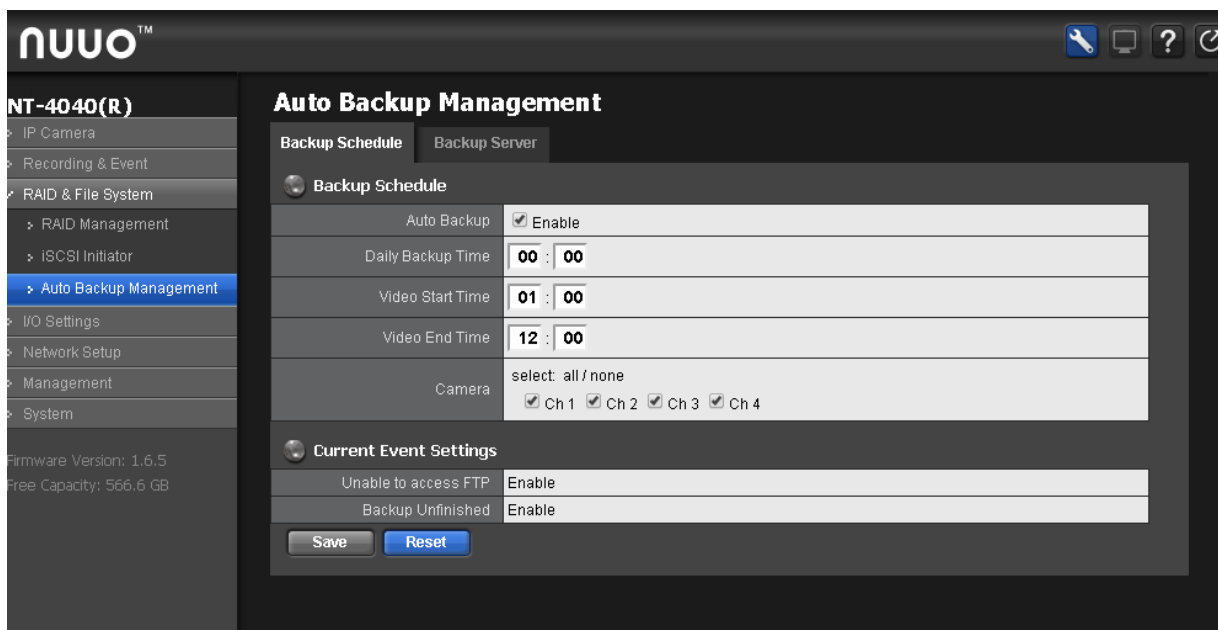
→ Go to Titan web settings page -> RAID & File System -> Auto Backup Management

a) When plug in external HDD into the system, files will automatically be backup to external HDD and users can't customize auto backup location. The original "Backup Server" FTP setup will be temporarily useless until external disk plug out.

b) The schedule setup behavior is the same.

Auto backup schedule behavior:

- On the assigned schedule, video from previous day will be backup.  
**Ex.** If the daily backup time is Feb. 17, 1:00, on Feb.17 1:00, video on Feb. 16 will be backup from assigned time.
- After plug in USB or external disk, the backup will start on the next assigned backup start time.  
**Ex.** If the daily backup time is Feb. 17, 1:00, and USB plugin on Feb. 17 2:00, the daily backup time will start on Feb. 18, 1:00.
- If auto backup process is operating, and then plugs in another USB or external HDD, the auto backup process will be stopped and start backup on the next day backup start time.



## **Notice:**

1. Only support FAT32 system, and only use the 1st partition.

4 / 5

2014/2/17

- FAT32 has 32G capacity limitation on Windows. User should use 3<sup>rd</sup> party application (ex. FAT32formatter) to format external storage to extent the 32G limitation.
- 2. If two USB plug in to the Titan once, only **the last one** will be mount. When the 2<sup>nd</sup> USB plug in to the Titan, the 1<sup>st</sup> USB process will be stopped and un-mount.
- 3. After confirming spec, the change of spec will impact the release schedule.**
- 4. Project version cannot be upgraded (once upgrade, the customize spec will disappear).**