

V1.3.1

Issue Solved (Bug Fixed)

1. Removed limitation of the **number of servers** which restricted only 10 recording servers.
2. The error of the **amount of license** which upgraded from dongle to license was modified.
3. Fixed the issue that **Remote Playback** cannot play recorded video.

V1.3.0

New Features

◆ NCS System

4. **License Management:** To register and validate your licenses, the system offers easy-to-use online activation via the Internet.
5. **Multiple Language:** Support 9 language, including Bulgarian, Chinese (Simplified/Traditional), Danish, English, Finnish, Italian, Portuguese (Brazil), and Spanish. An language tool can add new languages by users.
6. **Support Windows Vista**

◆ NCS Client

1. **One Way Audio:** Listen live and recorded audio from cameras' microphone through NCS Client.
2. **Bandwidth Optimized with Live streaming profile:** Live display at different frame rate and resolution (customized video format, frame rate, resolution, quality and bit rate) to preserve bandwidth when NCS Client opens video from recording servers.
3. **Camera Coverage Display:** Display camera coverage on the map to show monitoring range of cameras.
4. **Record Process of Events:** Alarm Note can record and note the process of events and alarm including time, alarm owner, alarm process and status.
5. **Auto-Startup & Auto-Login:** Start NCS Client with Windows and auto login last NCS Server while NCS Client is starting.
6. **Easy to find cameras on Map and Matrix:** Highlight a camera on Server View, Map and Matrix when operators select the camera.
7. **Display POS transaction on video:** Support POS devices and manage related alarm, and display POS transaction on live streaming video or playback video.
8. **Snapshot:** Take a snapshot on live streaming video or playback video.
9. **Video Export:** Export a period of playback video to a video file (AVI file or ASF file).

◆ NCS Matrix

1. **Auto-Startup:** Start NCS Matrix with Windows.
2. **Bandwidth Optimized with Live streaming profile:** Live display at different frame rate and resolution (customized video format, frame rate, resolution, quality and bit rate) to preserve bandwidth when NCS Matrix opens video from recording servers.
3. **Display POS transaction on video:** Support POS devices and manage related alarm, and display POS transaction on live streaming video or playback video.
4. **Send Alarm Video to Matrix Manually:** The operator can send alarm video

Improvement

◆ NCS Server

1. **Send notification** to NCS Client if the connection between NCS Server and SQL server is disconnected.
2. **Wait for SQL server starting** up to 3 minutes while starting up with Windows.
3. **Notify NCS Client** that disk space is low if disk space is less than 300 MB.
4. **Notify NCS Client** that disk space is exhausted if disk space is less than 300 MB after recycling all alarm snapshots.
5. **Add information of alarm type** and source server to E-mail or SMS message sent by triggered alarm.

◆ NCS Client

1. **Switch an indicator** to different map layers by dragging it to target map on map view.
2. **Remind users to login Matrix** if user dragging a camera to Matrix which does not login yet.
3. **Allow users to send camera onto a specified Matrix** from context menu of an alarm.
4. Support sending **E-mail** using SSL.
5. **Display error message** on video preview of live video window if NCS Client failed to connect the live view of a camera.
6. **Need to verify authority** if a non-admin user wants to open the remote desktop.
7. **Live video window** will show OSD “Disconnect” if the camera is disconnected on NVR Server.
8. **Live video window** will try to reconnect camera which is disconnected currently.
9. **Forbid NCS Client** committing configuration if it is off-line mode.
10. **Limit total number of video windows** (live video window and remote playback window) to 16.
11. **Improve the efficiency** of loading and saving huge configuration while NCS Client logins NCS Server and committing configuration to NCS Server.
12. Allow to edit user under user group directly.
13. Devices of a NVR Server will list by device type on Server View after synchronizing this NVR Server.

◆ NCS Matrix

1. **The setting of NCS Matrix** will be saved if it is launched from NCS Client
2. NCS Matrix will **show OSD “Disconnect”** if the camera disconnected or live streaming service stopped on NVR Server.
3. **Allow to switch NCS Matrixes** which are displayed on the same monitor by clicking process on Windows task bar.

Issue Solved (Bug Fixed)

◆ NCS Server

1. NCS Server can still work if user deletes another user account which is currently connecting.
2. Fixed an issue if new configurations committed by two NCS Clients at the same time may make NCS Server crash.
3. Committing new configuration while lots of alarms are triggering may cause NCS Server to hang is fixed.
4. NCS Server can send SMS message if NCS Server and NCS Client are on different PC.

◆ NCS Client

1. Fixed an issue when changing source device of any indicator in NCS Client may crash.
2. Fixed an issue that NCS Client may crash if user adds a map by importing an invalid image and then adds an indicator on this map.

◆ NCS Matrix

1. Improve capability of NCS Matrix while lots of videos which are related to triggered alarm are sending to Matrix.

Note:

◆ NCS System

1. Please upgrade to complete system of NCS V1.3, including NCS Server, NCS Client and NCS Matrix
2. Language of NCS and OS should be the same
3. SQL database should be backup and deleted from SQL when database is more than 500,000

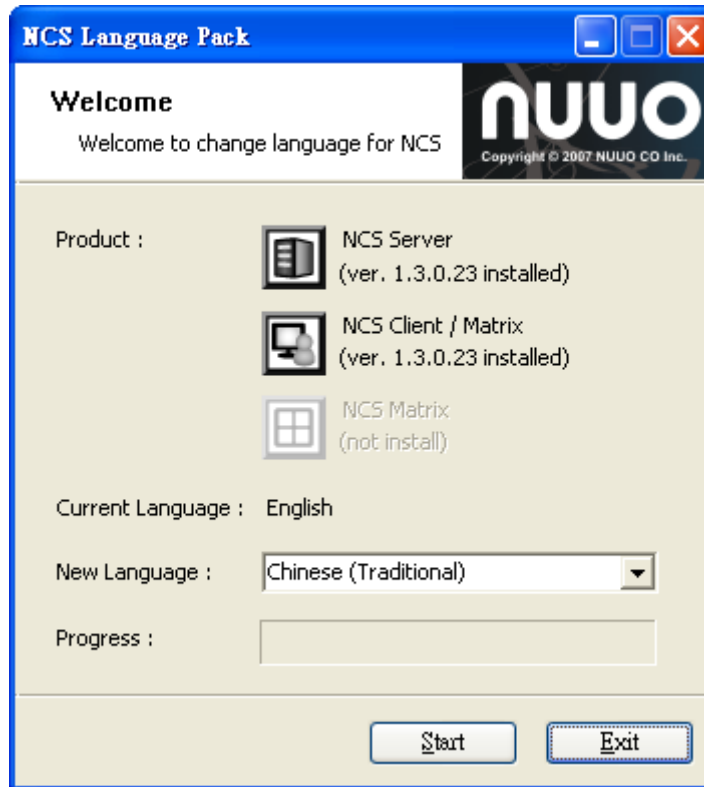
◆ NCS Client

1. Hardware health of MainConsole from V3.2.0.50 to V 3.2.4 cannot be showed on NCS Client.
2. NVR Server IP address cannot set 127.0.0.1 or localhost to avoid that NCS Server and NCS Client cannot find local NVR Server
3. Need to sync all NVR Server when upgrade to V1.3.
4. NCS Client cannot search recorded video of a camera when the camera of NVR Server (MainConsole) is deleted
5. NCS Client cannot receive alarm snapshot of NVRmini.

License

1. NCS Base License: NCS system needs a NCS Base License for installing the product. The product may be installed on an unlimited number of computers designed as NCS Client or NCS Matrix. The NCS Base License contains NCS Server, NCS Client and NCS Matrix.
2. NCS Connection License: To connect to a camera, an I/O device and a POS device, a license per device channel is required.

Tool A-NCS Language Pack



Tool B- Microsoft SQL Server Management Studio Express

