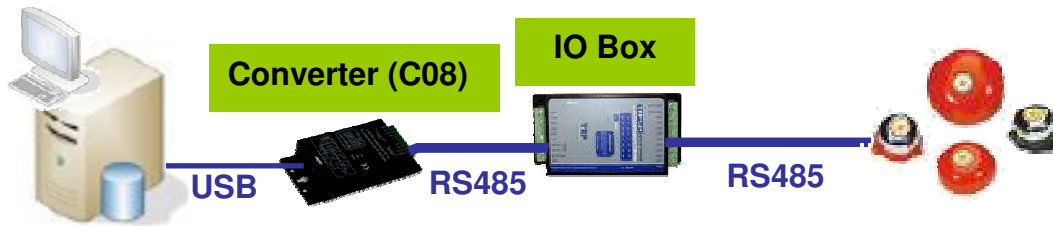


Subject:	IO Installation Guide	Release Date:	2009.03.25	Rev.: 1.0
----------	------------------------------	---------------	------------	-----------

Step 1: Connect between SCB-C08 and IO box.



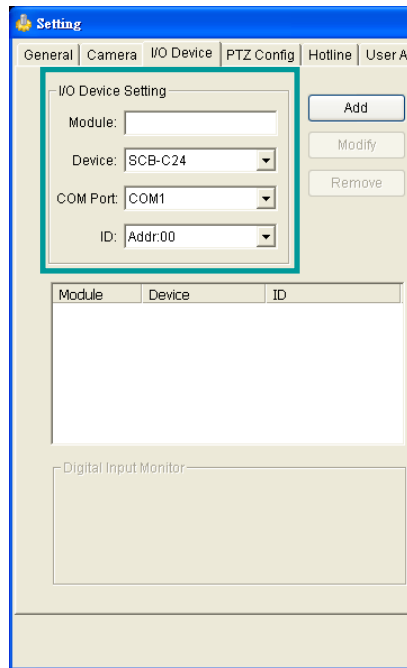
Step 2: Install the driver of SCB-C08 in the desktop. Connect between SCB-C08 and the desktop.



Step 3: Open main console. Click Config > Setting > I/O Device.

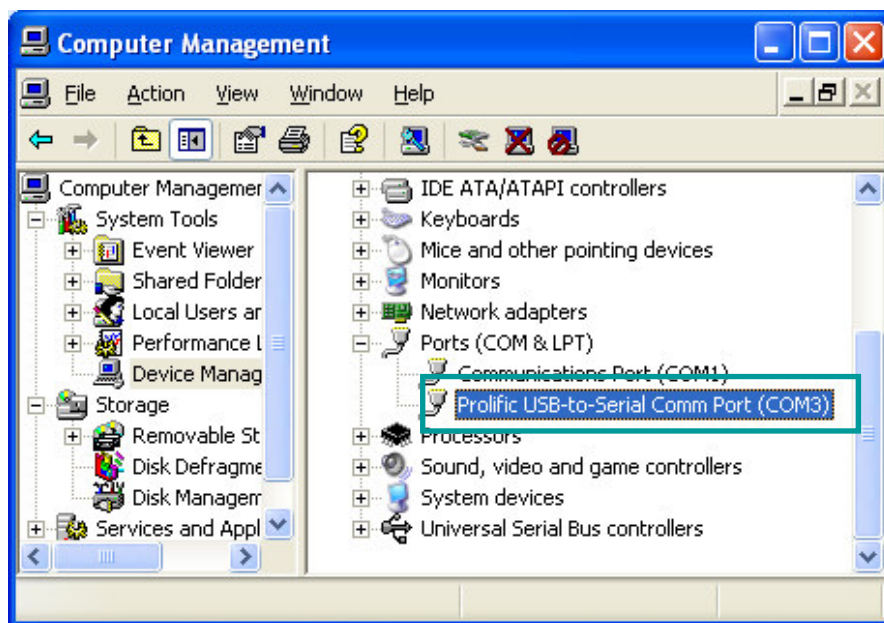
Subject:	IO Installation Guide	Release Date:	2009.03.25	Rev.: 1.0
----------	------------------------------	---------------	------------	-----------

Step 4: Insert module name of this device, and then choose the device model (IO box or IO card).



Step 5: Set COM port of this device. The COM port information can be received by the following steps.

1. Right click on "My computer", and then click "Manage" > "Computer management" > "Device Manage" > "Ports (COM & LTP)".
2. The COM port of "Prolific USB-to-Serial Comm Port" is the COM port of this device.



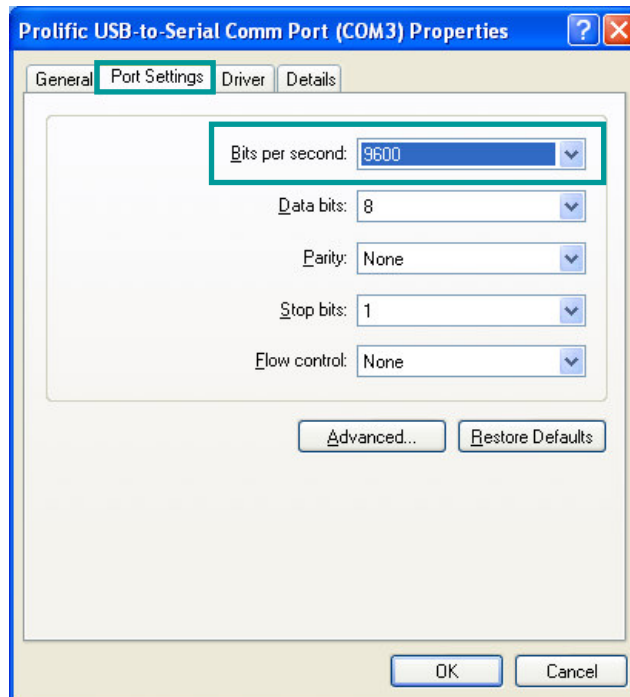
Subject:	IO Installation Guide	Release Date:	2009.03.25	Rev.: 1.0
----------	------------------------------	---------------	------------	-----------

Step 6: Set the ID of this device. The ID information can be received by the following steps.

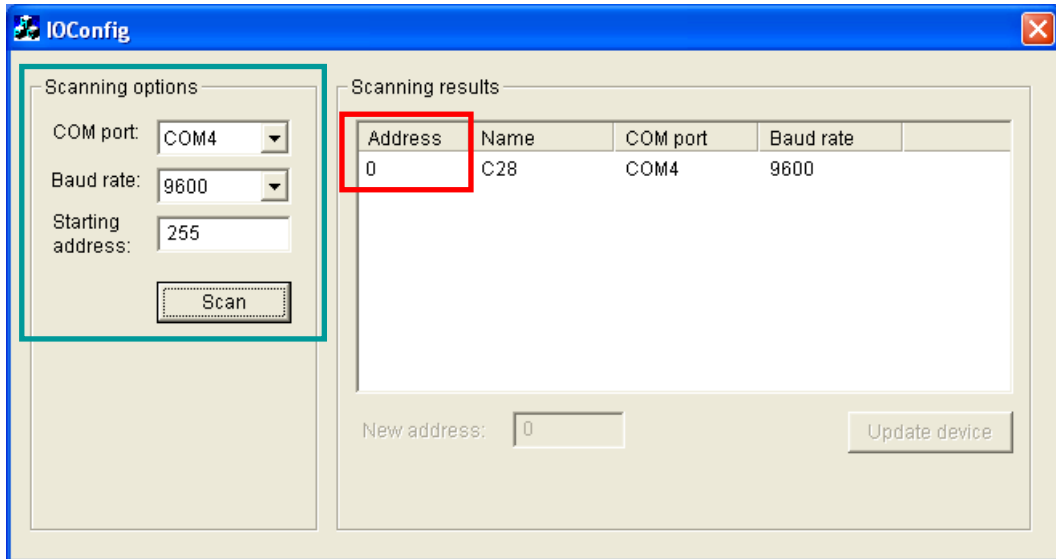
1. Right click on the device, and then click "Properties".



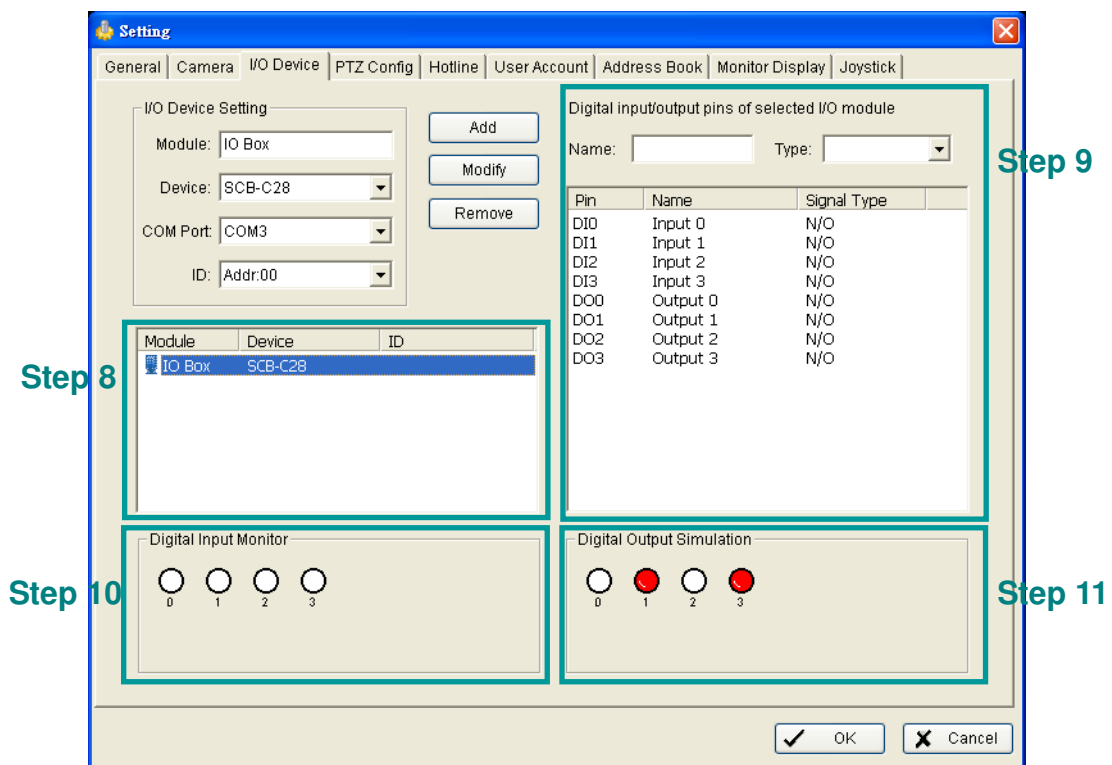
2. Choose Properties > Port Setting. The value of "Bit per second" is the value of this device's Baud rate.



3. Insert the included Software CD into CD-ROM. Run IOConfig.exe (in the folder "IOConfig").
4. Insert "COM port" and "Baud rate" data into "Scanning options", and then set "Starting address" to 0. After that, press "Scan".
5. The Address in the "Scanning results" is the ID information of this device.



Step 7: After inserting model name, device model, COM port, and ID, press "Add". This device will be added into the following list.



Subject:	IO Installation Guide	Release Date:	2009.03.25	Rev.: 1.0
----------	------------------------------	---------------	------------	-----------

Step 8: Choose one of devices in the I/O device list.

Step 9: Modify the name and set I/O state of each I/O in the right column.

Step 10: In the “Digital Input Monitor”, the input icon will become red when signal input.

Step 11: In the “Digital Output Simulation”, click the icon to send output signal for testing.