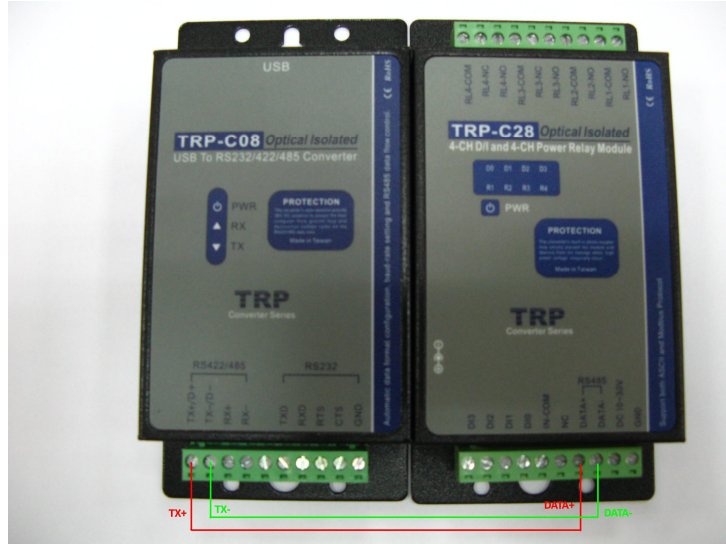
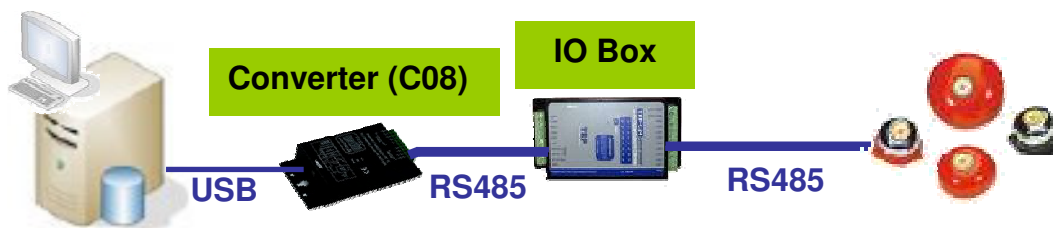


Subject:	<b>NUUO IO Installation Guide</b>	Release Date:	2009.03.25	Rev.: 1.0
----------	-----------------------------------	---------------	------------	-----------

**Step 1:** Connect between SCB-C08 and SCB-C28.



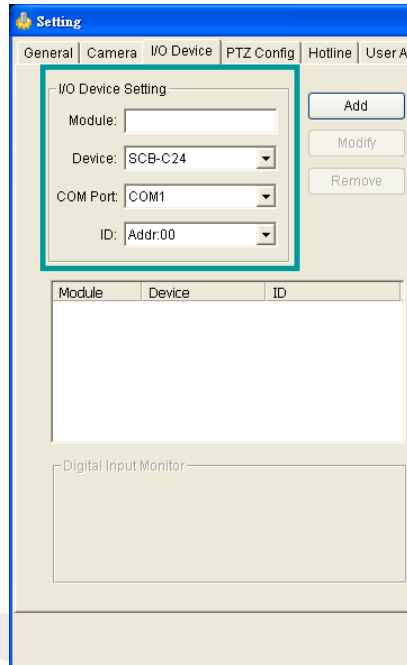
**Step 2:** Install the driver of SCB-C08 in the desktop. Connect between SCB-C08 and the desktop. (Please refer to "C08\_manual\_Eng.pdf" in the folder "C08" for more installation details.)



**Step 3:** Open main console. Click Config > Setting > I/O Device.

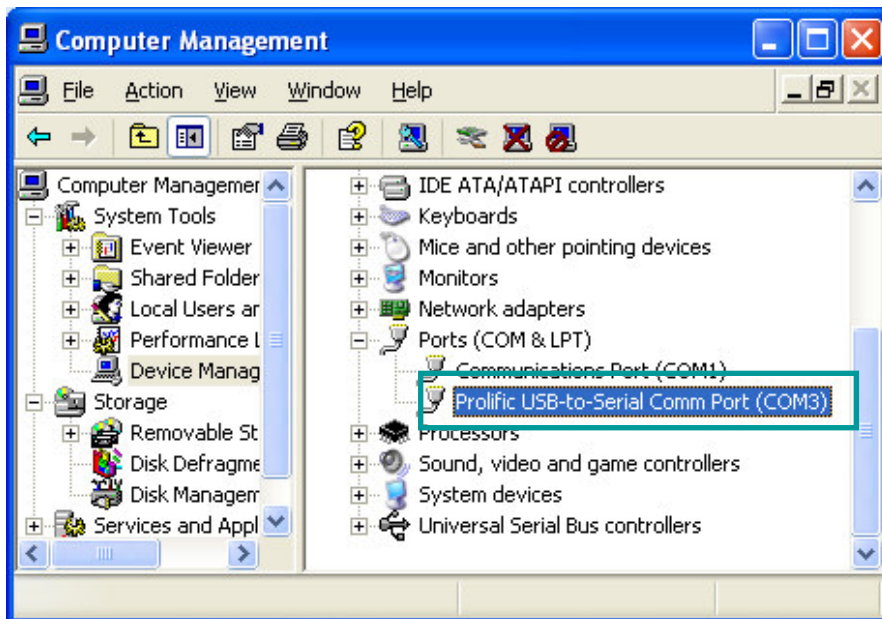
Subject:	<b>NUUO IO Installation Guide</b>	Release Date:	2009.03.25	Rev.: 1.0
----------	-----------------------------------	---------------	------------	-----------

**Step 4:** Insert module name of this device, and then choose the device model (IO box or IO card).



**Step 5:** Set COM port of this device. The COM port information can be received by the following steps.

1. Right click on "My computer", and then click "Manage" > "Computer management" > "Device Manage" > "Ports (COM & LPT)".
2. The COM port of "Prolific USB-to-Serial Comm Port" is the COM port of this device.



NUUO

<http://www.nuuo.com>

Copyright © 2009 NUUO Inc.. All rights reserved.

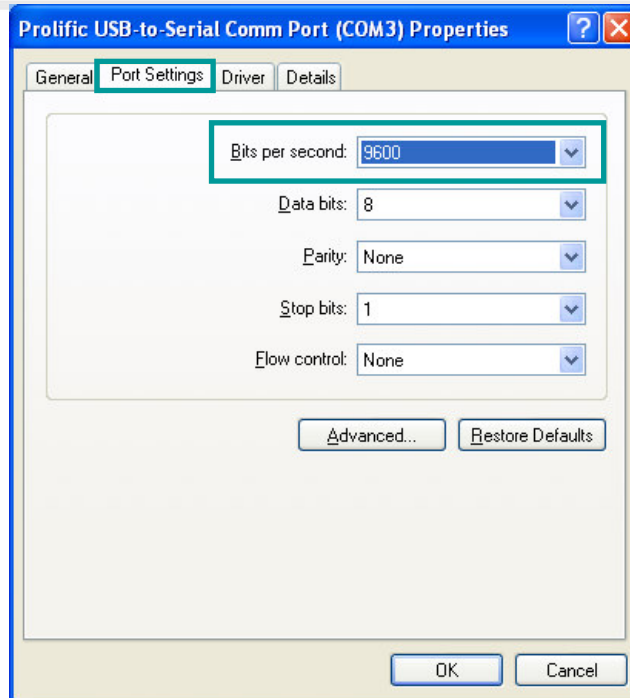
Subject:	<b>NUUO IO Installation Guide</b>	Release Date:	2009.03.25	Rev.: 1.0
----------	-----------------------------------	---------------	------------	-----------

**Step 6:** Set the ID of this device. The ID information can be received by the following steps.

1. Right click on the device, and then click "Properties".

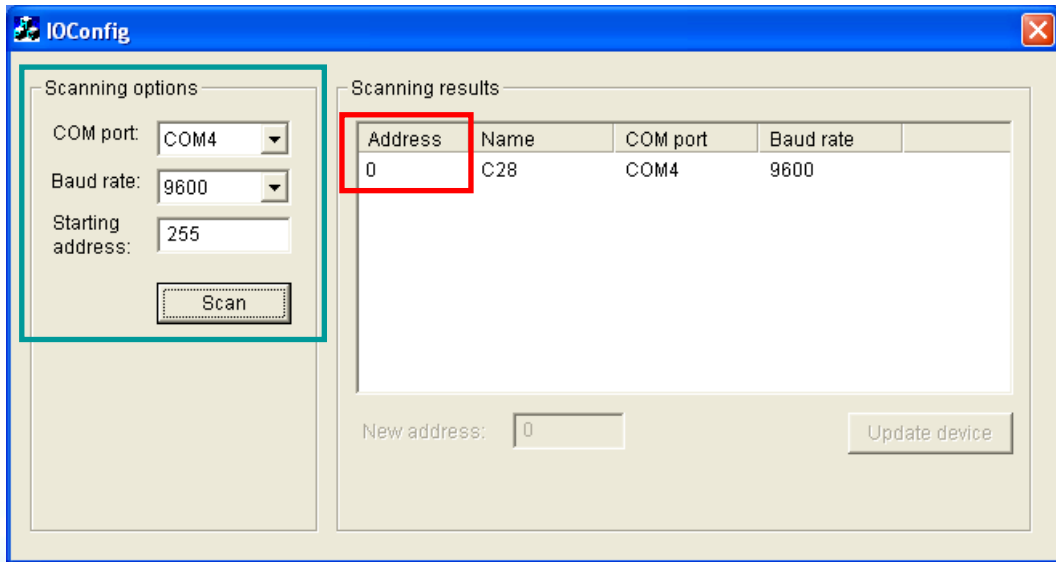


2. Choose Properties > Port Setting. The value of "Bit per second" is the value of this device's Baud rate.

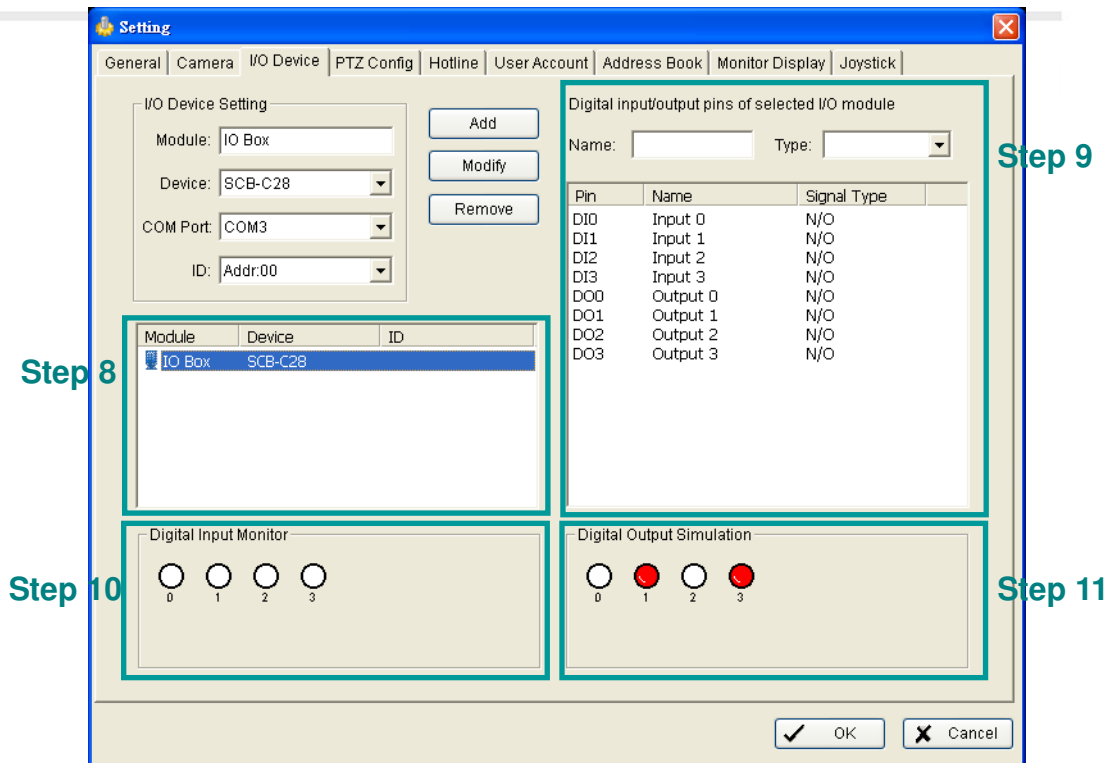


Subject:	<b>NUUO IO Installation Guide</b>	Release Date:	2009.03.25	Rev.: 1.0
----------	-----------------------------------	---------------	------------	-----------

3. Insert the included Software CD into CD-ROM. Run IOConfig.exe (in the folder "IOConfig").
4. Insert "COM port" and "Baud rate" data into "Scanning options", and then set "Starting address" to 0. After that, press "Scan".
5. The Address in the "Scanning results" is the ID information of this device.



**Step 7:** After inserting model name, device model, COM port, and ID, press "Add". This device will be added into the following list.





Subject:	<b>NUUO IO Installation Guide</b>	Release Date:	2009.03.25	Rev.: 1.0
----------	-----------------------------------	---------------	------------	-----------

**Step 8:** Choose one of devices in the I/O device list.

**Step 9:** Modify the name and set I/O state of each I/O in the right column.

**Step 10:** In the "Digital Input Monitor", the input icon will become red when signal input.

**Step 11:** In the "Digital Output Simulation", click the icon to send output signal for testing.

