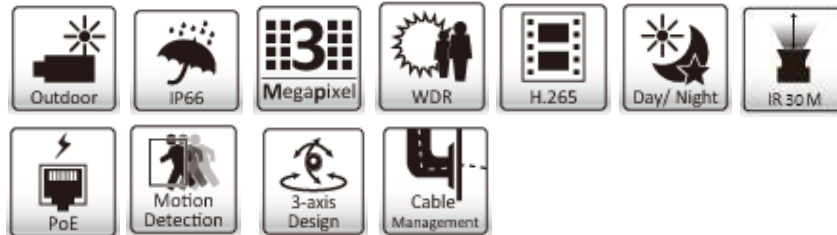


CHAMP BL5103 3MP IR Mini Bullet IP Camera



- 30fps @ 2304 x 1296
- H.265, 50% lower bitrate
- IR 30m
- Corridor mode
- ROI
- IP66



The CHAMP BL5103 is an outdoor ready IR Mini Bullet Camera, featuring 3MP resolution with video image of 2304x1296 at 30 fps. Latest H.265 compression to cut bandwidth and storage requirements in half.

As a true day and night camera, the CHAMP BL5103 has a automatic removable IR-cut filter and 30m IR illuminators. Besides, BL5103 has Corridor Format and ROI technology that allow camera to maximize video surveillance in narrow vertical situations and to decrease non-ROI's image quality to save on maximum bandwidth and storage.

Compatible with CHAMP NVR Software, the most professional NVR software for free bundled can support up to 32 IP cameras and plug-and-play cloud solution, you can easily setup a surveillance system from mobile devices, PC or laptop without any extra cost.



Related models

Model Name	BL3102	BL5103	BL7305
Feature	IR	IR	IR
	Mini Bullet	Mini Bullet	Mini Bullet
	Full HD 1080p	3MP	5MP
	H.264	H.265	H.265
	PoE	PoE	PoE
	IP66	IP66	IP66

Features

- 1/3" 4-Megapixel CMOS sensor
- H.265, H.264, and Motion JPEG compression
- 30fps @ 2304 x 1296
- 2.8mm, F2.0 megapixel fixed lens
- True day & night with automatic removable
- IR-cut filter
- IR 30m
- Corridor mode
- ROI(region of interested)
- RTC with built-in battery
- IP66 weatherproof with optional outdoor kit
- SSL v3 advanced HTTPS encryption
- Full support for Firefox, Safari and Mac OS
- Supports Samba network storage
- Multi-lingual user interface
- ONVIF 2.4 and Profile S compliant
- Free 32-channel CHAMP NVR software
- NVR software
- Supports True Plug and Play Cloud Solution

WDR



WDR off



WDR on

Applications



1. Office
2. Public Area

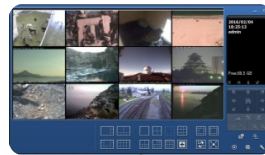
IP Surveillance Solutions

• Free 32ch NVR Software

The most professional NVR software you can get for free!

- Support up to 32 channels
- Up to 32 channels remote live view
- Remote playback 4 channels
- Multi-site / multi-server
- Transcoding (record high quality, transcode to different resolution/ frame rate for remote client to save bandwidth)
- iOS/ Android mobile client (multi-channel live view | playback | PTZ & I/O control)
- E-maps (up to 4 layers | unlimited number of maps | video preview)
- Dual monitor
- ePTZ
- Multi-lingual user interface

*32ch free license for CHAMP cameras, but need to activate license for other brand



• ONVIF

All IP cameras are ONVIF 2.x & Profile S compliant, and continuously upgraded to comply with the latest versions



Technical Specifications

Camera

Model	BL5103 3MP IR Mini Bullet IP Camera
Image sensor	1/3" 4 MP CMOS sensor
Lens	F2.0, 2.8mm
Angle of view	87° horizontal
Min illumination	0.3 lux @ F2.0 (color) 0.03 lux @ F2.0 (B/W)
Day/Night function	Mechanical IR cut filter

Video

Video compression	Motion JPEG H.264 baseline/ main profile/ high profile H.265
Resolutions	Motion JPEG/ H.264/ H.265: 6 resolutions including from 2304 x 1296 to 320 x 240 H.264/ H.265: up to 30 fps at 2304 x 1296 Motion JPEG : up to 15 fps at 2304 x 1296
Video streaming	Simultaneous Motion JPEG, H.264, H.265 Controllable frame rate and bandwidth Support unicast (Real Time Streaming Protocol)
Image settings	Rotation: mirror, flip, mirror flip WDR Brightness, contrast, saturation, sharpness Overlay capabilities: time, date, text and privacy Image ROI

Network

Security	Multiple user access levels with password protection, HTTPS encryption
Supported protocols	Bonjour, TCP/ IP, DHCP, DNS, DynDNS, PPPoE, ARP, ICMP, FTP, SMTP, NTP, UPnP, RTSP, RTP, RTCP, HTTP, HTTPS, SSL, TCP, UDP
Users	10 simultaneous users

Alarm and Event Support

Alarm and event management	Input: network link down, motion detection, periodical Output: network storage, FTP, SMTP, HTTP event, HTTP Server Pre- and post event image
-----------------------------------	--

System

	RJ-45 Ethernet 10/ 100 Base-T(with PoE) Reset push button DC 12V power supply ONVIF 2.4 & Profile S
--	--

General

Casing	Metal housing
Housing	IP66 rated
Power	12V DC, 1A Power consumption: Max. 5.8W PoE(Power over Ethernet) built-in IEEE 802.3af

General

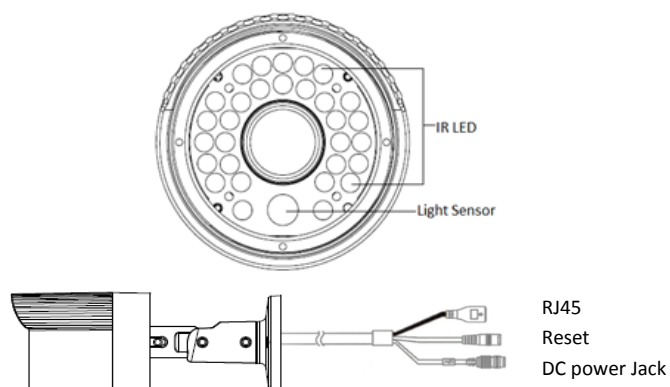
Operating conditions	Starting temperature: -10 ~ 60 °C (14 ~ 140 °F) Working temperature: -30~ 60 °C (-22 ~ 140 °F)
Installation, management, and maintenance	camera management tool on website and web-based configuration. Configuration of backup and restore firmware upgrades over HTTP, firmware available at www.champsolution.com
Minimum web browsing requirement	Intel Core i5 CPU @ 2.0GHz (or equivalent AMD) 512MB RAM graphic cards (or equivalent on-board graphic cards) 2GB RAM Windows 7 or later Mac OS Leopard 10.5 or later
Dimensions (HxWxD)	φ66 x 166 mm, incl. bracket (φ2.6" x 6.5" x 3.5")
Weight	420g excl. power supply

Certification CE, FCC, RoHS

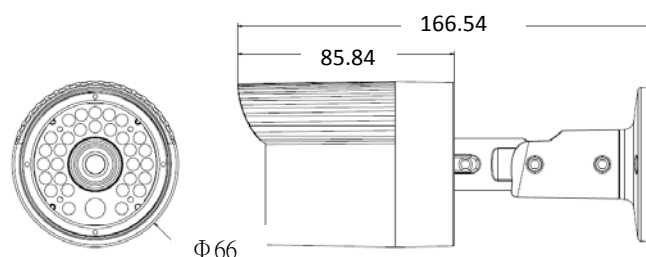
Integration

Video management software	CHAMP software, and archiving up
----------------------------------	----------------------------------

Part Names and Functions



Dimensions



Unit:mm



B1, No.207-1, Sec. 3, Beixin Rd., Xindian Dist., New Taipei City 231, Taiwan | www.champsolution.com
Tel : +886-2-7739-2260 | Fax : +886-2-7703-3377 | Mail : inquiry@champsolution.com

© 2015 All rights reserved.

THIS DOCUMENT IS PROVIDED FOR INFORMATIONAL PURPOSES ONLY AND IS NOT INTENDED AS ADVERTISING. ALL WARRANTIES RELATING TO THE INFORMATION IN THIS DOCUMENT, EITHER EXPRESS OR IMPLIED, ARE DISCLAIMED TO THE MAXIMUM EXTENT ALLOWED BY LAW. THE INFORMATION IN THIS DOCUMENT IS SUBJECT TO CHANGE WITHOUT NOTICE. ALL MENTIONED BRAND NAMES ARE REGISTERED TRADEMARKS AND PROPERTY OF THEIR OWNERS.