

DM5302 2MP Outdoor Motorized Dome



- Outdoor vandalproof
- Full HD 1080p
- Motorized lens + P-iris
- Adaptive IR 40m
- -50°C Low Temperature



DM5302 2MP outdoor motorized dome can keep consistent visibility all the time, is a perfect surveillance solution for monitoring 24x7 outdoor activities.

This DM5302 outdoor dome is extremely comprehensive, can work in almost any location, including banks, residential or public area. It features a motorized lens for remote focus and zoom control, the installer/user can remote control the focal length and precisely adjust the camera focus. This made DM5302 hassle-free installation and maintenance.

Besides, DM5302 comes with AdaptiveIR and P-iris to provide great clarity image all day. Compared to traditional IR, Smart IR can automatically adjusting IR output in response to the distance of the object to avoid over-exposure. P-iris can provide a clear image with better contrast and depth of field. That's why DM5302 can overcome variation light condition to have clear image.



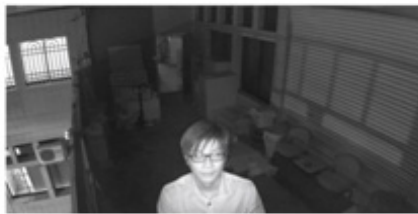
Features

- Full HD 1080p
- 1/2.8" CMOS sensor
- H.264 and Motion JPEG compression
- 30 fps at 1920 x 1080
- 2.8 - 12 mm, F1.6, motorized, P-iris lens
- True day & night with automatic removable IR-cut filter
- Smart focus system for remote focal & focus control
- Smart feature: Adaptive IR, Corridor Mode, ROI
- Adaptive IR 40m
- Two-way audio and built-in microphone
- RTC with built-in battery
- 2 x alarm input, 2 x alarm output
- Tampering detection
- IK10 vandal-proof
- IP67 weatherproof
- Screwless 3-axis angle adjustment for easy installation on wall or ceiling
- SSL v3 advanced HTTPS encryption
- Full support for Firefox, Safari and Mac OS
- Supports Samba network storage
- Multi-lingual user interface
- ONVIF 2.4 and Profile S compliant
- Free 32-channel NVR software
- Built-in SD card slot

Adaptive IR



Adaptive IR OFF



Adaptive IR ON

P-iris



Conventional



P-iris

Applications

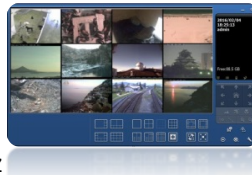


1. banking
2. Residential
3. Public Area

IP Surveillance Solutions

• Free 32ch NVR Software

- The most professional NVR software you can get for free!
- Support up to 32 channels
 - Remote live view support up to 16 channels
 - Remote playback 8 channels
 - iOS/ Android mobile client (multi-channel live view | playback | PTZ & I/O control)
 - Multi-lingual user interface



• ONVIF

All IP cameras are ONVIF 2.x & Profile S compliant, and continuously upgraded to comply with the latest versions



Technical Specifications

Camera	
Model	DM5302 2MP Outdoor Motorized Dome
Image sensor	1/2.8" CMOS sensor
Lens	F1.6, 2.8-12 mm motorized, P-iris lens
Angle of view	35°-96° horizontal
Min illumination	0.01 lux @ F1.6 (color) 0.001 lux (b/w) 0 lux (IR LED on)
IR working distance	40m effective range Adaptive IR, adjustable brightness via FW
IR LEDs	High performance IR LED x 16 (850nm)
Day/Night function	Mechanical IR cut filter Light sensor
Pan	345°
Tilt	70°
Rotate	345°

Video	
Video compression	Motion JPEG H.264 baseline/ main profile/ high profile
Resolutions	Motion JPEG: 2 resolutions from 1920 x 1080 to 320 x 240 via API 2 resolutions from 640 x 480 to 320 x 240 via API H.264: 2 resolutions from 1920 x 1080 to 320 x 240 via API 2 resolutions from 640 x 480 to 320 x 240 via API Motion JPEG: up to 30 fps at 1920 x 1080 H.264: up to 30 fps at 1920 x 1080
Video streaming	Simultaneous Motion JPEG, H.264 Controllable frame rate and bandwidth Support unicast (Real Time Streaming Protocol)
Image settings	Rotation: mirror, flip, mirror+ flip WDR enhanced Brightness, contrast, saturation, sharpness Overlay capabilities: Time stamp, Title, Title & Time stamp Privacy mask

Audio	
Audio streaming	Two-way (full duplex)
Audio compression	G.711 μ law, a law, AMR
Audio input/output	Line in/ line out

Network	
Security	Multiple user access levels with password protection, HTTPS encryption
Supported protocols	Bonjour, TCP/ IP, DHCP, DNS, DynDNS, PPPoE, ARP, ICMP, FTP, SMTP, NTP, UPnP, RTSP, RTP, RTCP, HTTP, HTTPS, SSL, TCP, UDP
Users	5 simultaneous users

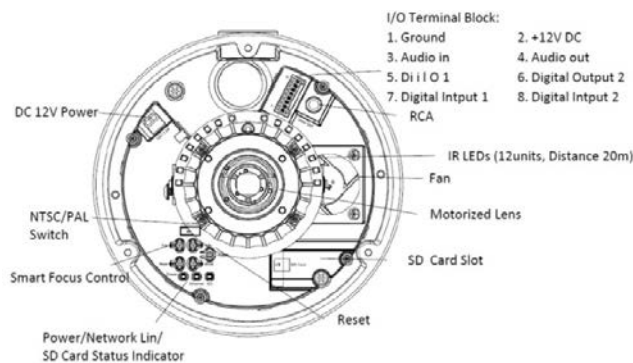
Alarm and Event Support	
Alarm and event management	Input: alarm buffer, alarm input, motion detection Output: network storage, FTP, SMTP, HTTP event, alarm Pre-and post alarm buffer Tampering detection

System	
	RJ-45 Ethernet 10/ 101 Base-T(with PoE) 3 pin terminal blocks for DC power Smart focus control buttons Terminal blocks for alarm input/ alarm output Line in/ line out Reset push button NTSC/ PAL switch RCA connector for analog video output

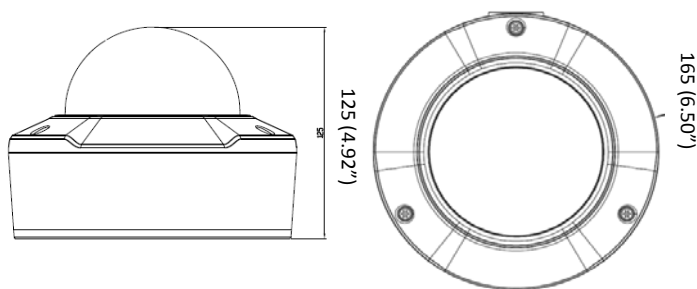
Local storage	SD/ SDHC card slot
LED Indicator	Power status indicator Network link indicator SD card status indicator ONVIF 2.4 & Profile S

General	
Casing	Aluminum casing
Housing	IP67 rated weatherproof; IK10 vandal-proof
Power	12V DC, 1.5A Power consumption: Max. 14.5W PoE (Power over Ethernet) built-in IEEE 802.3af/at
Operating conditions	-50 ~ 60 °C (-58 ~ 140 °F)
Minimum web browsing requirement	Pentium 2.8GHz (or equivalent AMD) 256MB RAM graphic cards (or equivalent on-board graphic cards) 1G RAM Windows 2008, XP, Vista or Windows 7 Mac OS Leopard 10.5 or later
Dimensions (HxWxD)	ϕ 165 x 125mm (ϕ 6.50" x 4.92")
Weight	1670g (3.69lb) excl. power supply
Included accessories	Quick installation guide, mounting and connector kits Download on website (Camera Installation Tool, Video Management Tool, User Manuals, Camera LanguagePacks)
Certification	CE, FCC, RoHS

Part Names and Functions



Dimensions



Unit: mm (inches)



B1, No.207-1, Sec. 3, Beixin Rd., Xindian Dist., New Taipei City 231, Taiwan | www.champsolution.com
 Tel : +886-2-7739-2260 | Fax : +886-2-7703-3377 | Mail : inquiry@champsolution.com

© 2015 All rights reserved.
 THIS DOCUMENT IS PROVIDED FOR INFORMATIONAL PURPOSES ONLY AND IS NOT INTENDED AS ADVERTISING. ALL WARRANTIES RELATING TO THE INFORMATION IN THIS DOCUMENT, EITHER EXPRESS OR IMPLIED, ARE DISCLAIMED TO THE MAXIMUM EXTENT ALLOWED BY LAW. THE INFORMATION IN THIS DOCUMENT IS SUBJECT TO CHANGE WITHOUT NOTICE. ALL MENTIONED BRAND NAMES ARE REGISTERED TRADEMARKS AND PROPERTY OF THEIR OWNERS.