

CHAMP DM7305 5MP Motorized P-iris Outdoor



- H.265, 50% lower bitrate
- 2560 x 1920 @ 30fps
- Motorized lens + P-iris
- Adaptive IR 40m
- -50°C Low Temperature



The all new CHAMP DM7305 dome camera has it all. Latest H.265 compression to cut bandwidth and storage requirements in half. WDR to handle the most challenging lighting conditions. Superior low-light sensitivity that still sees when you don't. Adaptive IR Pro that not only automatically adjusts the power of the IR illuminators, but also it's angle, to fit the view angle of the motorized lens, which can be easily focused by the Smart Focus function, remotely of course. Built-in fan and heater allow the camera to operate in the most extreme environments (-50°C to 60°C).

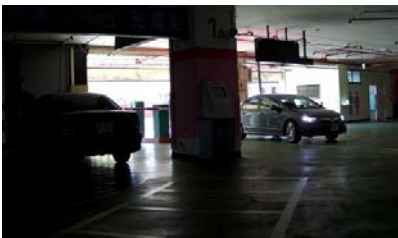
The DM7305 can be used in all kinds of applications, ranging from traffic, airports to public area surveillance and extreme applications. Compatible with professional NVR software for free bundled can support up to 32CH IP cameras, you can easily setup a surveillance system from mobile devices, PC or laptop without any extra cost.



Features

- 30 fps @ 2560 x 1920, 60fps @ 1080 x 720
- H.265 saving 50% bandwidth
- Motorized 3.6 - 10 mm, F1.5, P-iris, Smart focus
- Adaptive IR 40m
- WDR extreme
- Smart feature: Adaptive IR, Corridor Mode, ROI
- Defog
- RS-485 supports pan/ tilt motors
- Two-way audio, line in and line out
- 1 x alarm input, 1 x alarm output
- Edge storage
- -40°C low temperature
- IK10 vandal-proof
- IP67 weatherproof
- Screw-less 3-axis angle adjustment for easy installation on wall or ceiling
- SSL v3 advanced HTTPS encryption
- Supports Samba network storage
- Multi-lingual user interface
- ONVIF 2.4 and Profile S compliant
- Free 32-channel NVR software

WDR Extreme



WDR off



WDR on

Applications



1. City Surveillance
2. Industrial

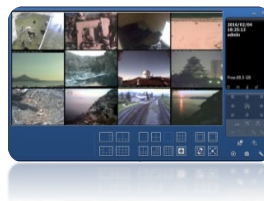
IP Surveillance Solutions

• Free 32ch NVR Software

The most professional NVR software you can get for free!

- Support up to 32 channels
- Up to 32 channels remote live view
- Remote playback 4 channels
- Multi-site / multi-server
- Transcoding (record high quality, transcode to different resolution/ frame rate for remote client to save bandwidth)
- iOS/ Android mobile client (multi-channel live view | playback | PTZ & I/O control)
- E-maps (up to 4 layers | unlimited number of maps | video preview)
- Dual monitor
- ePTZ
- Multi-lingual user interface

*32ch free license for CHAMP cameras, but need to activate license for other brand



• ONVIF

All IP cameras are ONVIF 2.x & Profile S compliant, and continuously upgraded to comply with the latest versions



Technical Specifications

Camera	
Model	DM7305 5MP Motorized P-iris Outdoor Dome
Image sensor	1/1.8" megapixel CMOS sensor
Lens	F1.5, 3.6 - 10 mm motorized, P-iris lens
Angle of view	109°~42° horizontal
Min illumination	0.05 lux @ F1.5 (color) 0.005 lux (B/W) 0 lux (IR LED on)
IR working distance	40m effective range Adaptive IR, adjustable brightness via FW
IR LEDs	High performance IR LED x 16(850nm)
Day/Night function	Mechanical IR cut filter

Video	
Video compression	H.264 baseline/ main profile/ high profile H.265
Resolutions	1. 5MP Mode 2 profiles from 2560 x 1920 to 640 x 360 2 profiles from 640 x 480 to 640 x 360 2. 2MP Mode 2 profiles from 1080 x 720 to 640 x 360 2 profiles from 640 x 480 to 640 x 360
Frame rate	H.264/ H.265: up to 60 fps at 2MP Mode up to 30 fps at 5MP Mode
Video streaming	Simultaneous Motion JPEG, H.264, H.265 Controllable frame rate and bandwidth Support unicast (Real Time Streaming Protocol)
Image settings	Rotation: mirror, flip, mirror flip WDR Brightness, contrast, saturation, sharpness Overlay capabilities: time, date, text and privacy Image ROI, corridor mode Defog

Audio	
Audio streaming	Two-way (full duplex) Line in/ line out
Audio compression	G.711 μ law, a law/ G.726/ AMR

Network	
Security	Multiple user access levels with password protection, HTTPS encryption
Supported protocols	Bonjour, TCP/ IP, DHCP, DNS, DynDNS, PPPoE, ARP, ICMP, FTP, SMTP, NTP, UPnP, RTSP, RTP, RTCP, HTTP, HTTPS, SSL, TCP, UDP
Users	10 simultaneous users

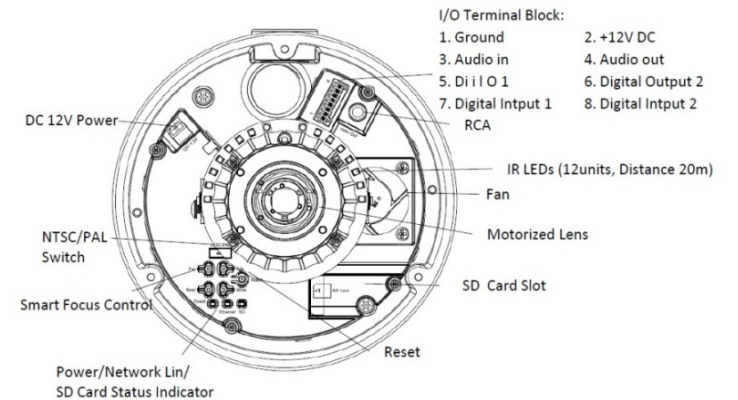
Alarm and Event Support	
Alarm and event management	Input: alarm buffer, alarm input, motion detection Output: network storage, FTP, SMTP, HTTP event, alarm out Pre- and post alarm buffer
IVS	Tampering detection, tripwire, perimeter

System	
Connectors	RJ-45 for Ethernet 10/100/1000 Base-T (with PoE) 2 pin terminal blocks for DC power Smart Focus control buttons Terminal blocks for alarm input/ alarm output Line in/ line out Reset push button NTSC/ PAL switch RCA connector for analog video output
Local storage	SD/ SDHC/ SDXC card slot
LED Indicator	Power status indicator Network link indicator SD card status indicator
Software integration	ONVIF 2.4 & Profile S

General	
Casing	Aluminum casing
Housing	IP67 rated weatherproof , IK10 vandal-proof
Power	12V DC, 1.5A Power consumption: Max. 14W PoE(Power over Ethernet) built-in IEEE 802.3af/at (class 0)
Operating conditions	-50 ~ 60 °C (-40 ~ 140 °F)
Installation, management, and maintenance	camera management tool on website and web-based configuration. Configuration of backup and restore firmware upgrades over HTTP. available at www.zavio.com
Dimensions (HxWxD)	ϕ 165 x 125mm (6.50" x 4.92")
Weight	1670g (3.69lb) excl. power supply
Included accessories	Quick installation guide, mounting and connector kits Download on website (Camera Installation Tool, Video Management Tool, User Manuals, Camera LanguagePacks)
Certification	CE, FCC, RoHS

Integration	
software	IP System software, for viewing, recording and archiving up to 32 cameras

Part Names and Functions



Dimensions

