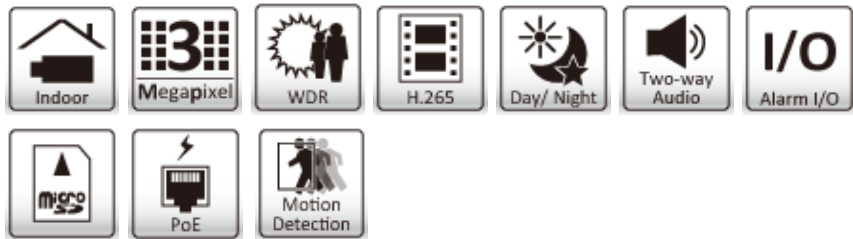


# FE5403 3MP Panoromic Fisheye IP Camera



- 180° /360° Fisheye Mini Dome
- H.265, 50% lower bitrate
- 30fps @ 2048 x 1520
- Edge Storage



The FE5403 is a compact, yet powerful fisheye dome camera featuring many cutting-edge technologies. The high resolution fisheye lens provides 360° surround view with image detail even at the normally weak edges; the backside illuminated 4-Megapixel image sensor ensures good low light sensitivity; our advanced fisheye dewarping algorithms keeps distortion lower than others while putting less computing loading on the server; and last but not least, video can be streamed in the ultra-efficient H.265 format, which has up to 50% lower bitrates and cuts your bandwidth and storage requirements in half.

It also features a removable IR-cut filter, MicroSD/SDHC/SDXC edge storage, PoE, two-way audio and alarm input/output, making it a extremely versatile camera with maximum coverage.

## Features

- 1/3" 4-Megapixel CMOS sensor
- H.265, H.264, and Motion JPEG compression
- 30fps @ 2048 x 1520
- 1.05mm, F2.0 fisheye lens
- WDR
- True day & night with automatic removable IR-cut filter
- Two-way audio and built-in microphone
- 1 x alarm input, 1 x alarm output
- Edge storage
- RTC with built-in battery
- SSL v3 advanced HTTPS encryption
- Supports Samba network storage
- Multi-lingual user interface
- ONVIF 2.4 and Profile S compliant
- Free 32-channel NVR software

## Dewarp



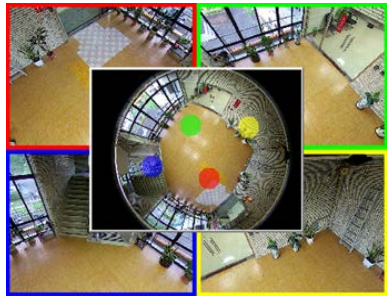
Origin



Single Regional



Dual Panoramic View



One Original & Four Regional

## Applications



1. Office
2. Public Area

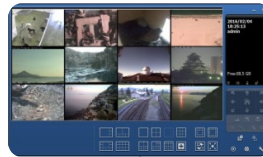
## IP Surveillance Solutions

### • Free 32ch NVR Software

The most professional NVR software you can get for free!

- Support up to 32 channels
- Up to 32 channels remote live view
- Remote playback 4 channels
- Multi-site / multi-server
- Transcoding (record high quality, transcode to different resolution/ frame rate for remote client to save bandwidth)
- iOS/ Android mobile client (multi-channel live view | playback | PTZ & I/O control)
- E-maps (up to 4 layers | unlimited number of maps | video preview)
- Dual monitor
- ePTZ
- Multi-lingual user interface

\*32ch free license for CHAMP cameras, but need to activate license for other brand



### • ONVIF

All IP cameras are ONVIF 2.x & Profile S compliant, and continuously upgraded to comply with the latest versions



# Technical Specifications

Camera	
<b>Model</b>	FE5403 3MP Panoramic Fisheye IP Camera
<b>Image sensor</b>	1/3" 4-megapixel CMOS sensor
<b>Lens</b>	F2.0, 1.05mm
<b>Angle of view</b>	360°

<b>Min illumination</b>	0.3 lux @ F2.0 (color) 0.03 lux @ F2.0 (B/W)
-------------------------	---

<b>Day/Night function</b>	Mechanical IR cut filter
---------------------------	--------------------------

Video	
<b>Video compression</b>	Motion JPEG H.264 baseline/ main profile/ high profile H.265

<b>Resolutions</b>	Motion JPEG/ H.264/ H.265: 3 resolutions including 2048 x 1520, 640 x 480 and 320 x 240
--------------------	--

<b>Frame rate</b>	Motion JPEG/ H.264/ H.265: up to 30 fps at 2048 x 1520
-------------------	--

<b>Video streaming</b>	Simultaneous Motion JPEG, H.264, H.265 Controllable frame rate and bandwidth Support unicast (Real Time Streaming Protocol)
------------------------	--

<b>Image settings</b>	Rotation: mirror, flip, mirror flip WDR Brightness, contrast, saturation, sharpness Overlay capabilities: time, date, text and privacy Image ROI Defog
-----------------------	--

Audio	
<b>Audio streaming</b>	Two-way (full duplex)
<b>Audio compression</b>	G.711 $\mu$ law, a law, AMR Built-in microphone, line input and line output

Network	
<b>Security</b>	Multiple user access levels with password protection, HTTPS encryption Bonjour, TCP/ IP, DHCP, DNS, DynDNS, PPPoE, ARP, ICMP, FTP, SMTP, NTP, UPnP, RTSP, RTP, RTCP, HTTP, HTTPS, SSL, TCP, UDP

<b>Users</b>	10 simultaneous users
--------------	-----------------------

Alarm and Event Support	
<b>Alarm and event management</b>	Input: alarm buffer, alarm input, motion detection Output: network storage, FTP, SMTP, HTTP event, alarm Pre- and post alarm buffer

System	
<b>Connectors</b>	RJ-45 Ethernet 10/ 100 Base-T (PoE) Reset button 2pin terminal block for DC power 6pin cable for 1 alarm input, 1 output, 1 audio line in 1 audio line out

<b>Local storage</b>	MicroSD Card slot Power status indicator Network link indicator
----------------------	---

<b>Software integration</b>	ONVIF 2.4 & Profile S
-----------------------------	-----------------------

<b>Video management software</b>	Camera Installation Tool & Video Management Software for viewing recording and archiving up to 32 cameras
----------------------------------	---

General	
<b>Casing</b>	Aluminum casing
<b>Power</b>	DC 12V or PoE IEEE 802.3af class 1 Power consumption: Max 4.65W

<b>Operating conditions</b>	-10 ~ 50 °C ( 14 ~ 122 °F)
-----------------------------	----------------------------

<b>Installation, management, and maintenance</b>	camera management tool on website and web-based configuration. Configuration of backup and restore firmware upgrades over HTTP.
--	---

<b>Minimum web browsing requirement</b>	Pentium 4 2.8GHz (or equivalent AMD) 256MB RAM graphic cards 2GB RAM Windows 7 or later Window XP, Vista, or Windows 7 Mac OS Leopard 10.5 or later
---	--

<b>Dimensions</b>	$\phi$ 115 x 54mm ( $\phi$ 4.53" x 2.13")
-------------------	---

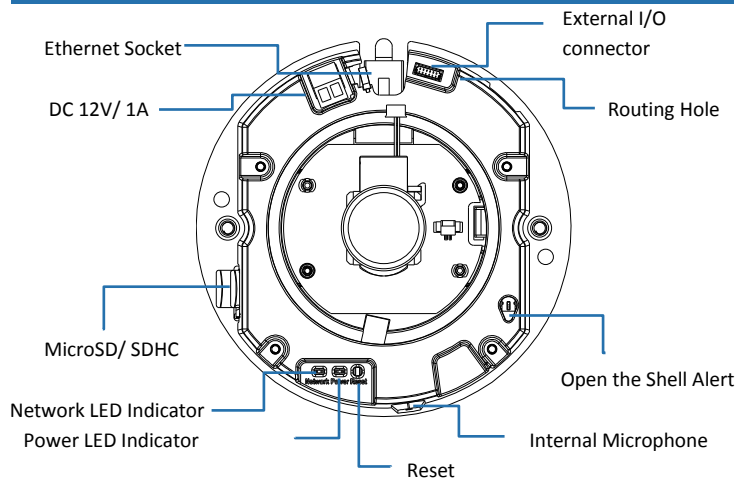
<b>Weight</b>	240g (0.53lb)
---------------	---------------

<b>Included accessories</b>	Quick installation guide, mounting and connector kits Download on website (Camera Installation Tool, Video Management Tool, User Manuals, Camera LanguagePacks)
-----------------------------	--

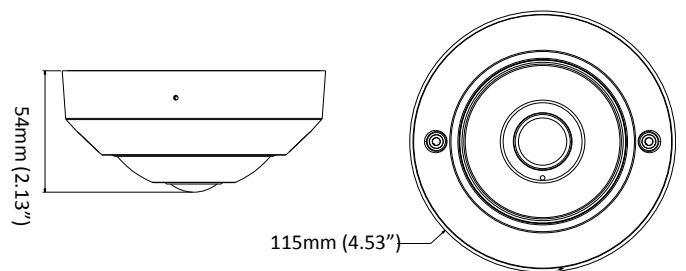
<b>Certification</b>	CE, FCC
----------------------	---------

Integration software	
	For viewing, recording and archiving up to 32 ch cameras

## Part Names and Functions



## Dimensions



B1, No.207-1, Sec. 3, Beixin Rd., Xindian Dist., New Taipei City 231, Taiwan | [www.champsolution.com](http://www.champsolution.com)

Tel : +886-2-7739-2260 | Fax : +886-2-7703-3377 | Mail : [inquiry@champsolution.com](mailto:inquiry@champsolution.com)