

# **Mini Bullet IP Camera**

---

## **Quick Installation Guide**

## Quick Installation Guide

Please follow the installation steps below to set up your Mini Bullet Camera. Check the package contents against the list below. **See P.1**

Physical overview. **See P.2**

Install the hardware and connect all cables. **See P.2**

Microsoft OS: Go Website download Camera Installation Tool. **See P.3**

Access the IP Camera using Camera Installation Tool. **See P.4**

Mac OS using Safari Browser. **See P.6**

Lighting environment setting. **See P.6**

Change the Web Interface into your preferred language. **See P.7**

Application of IP Camera. **See P.7**

### Package Contents

<b>Camera</b>	Mini Bullet IP Camera
<b>Quick Installation Guide</b>	Brief product information and quick installation
<b>Accessory</b>	Screws and anchors for wall and ceiling mounting Alignment sticker Allen Wrench Male DC power jack adapter connector

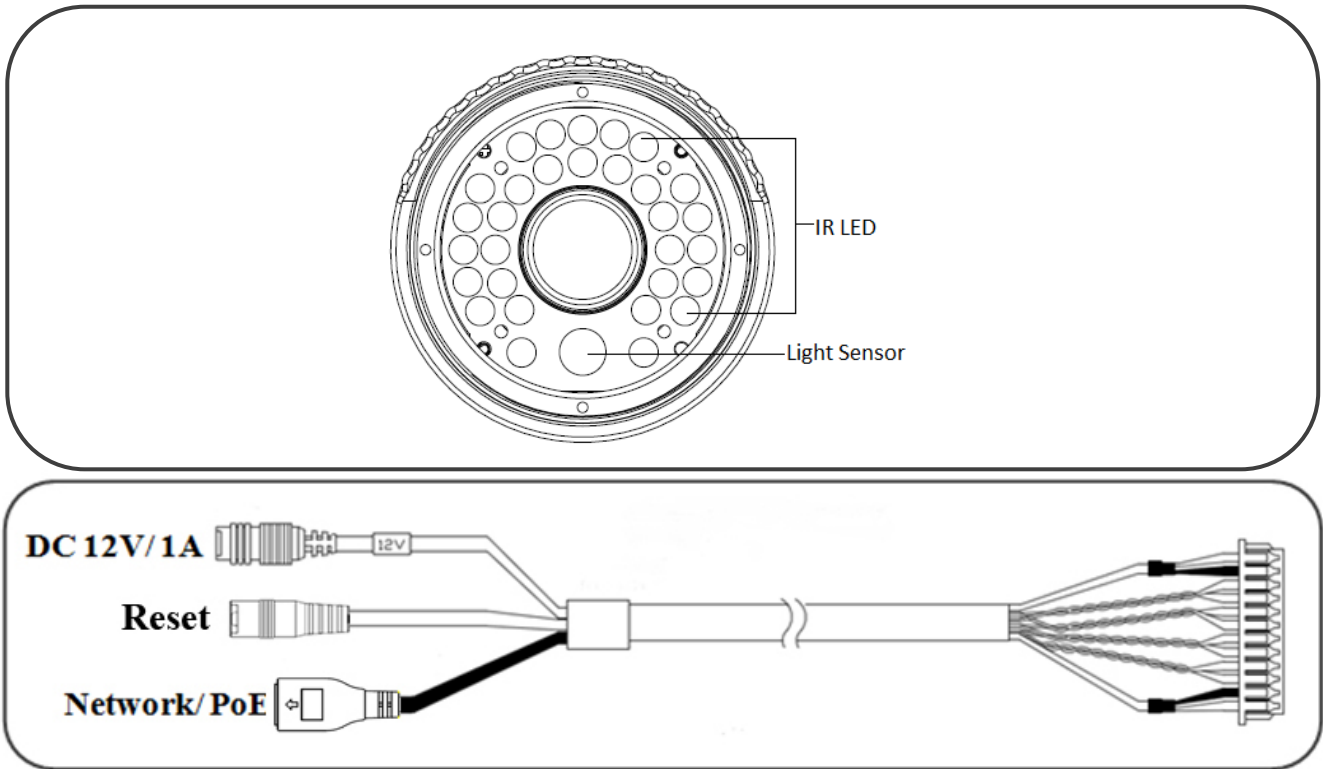
### Software

The following software and information are available online:

- Camera Bundle Software
- Camera Installation Tool
- User manuals

Please go download from <http://www.champsolution.com/DownloadMainpage.php>

## Physical Overview

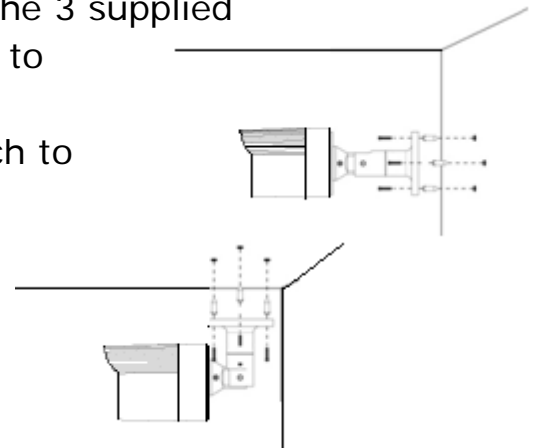


**Reset:** When the device is powered, press the Reset Button to reboot the device, or hold the Reset Button for 15 seconds to the settings back to factory default.

### Install the hardware and connect all cables

#### a. Wall mounting and Ceiling mounting

1. Attached alignment sticker to the wall, and drill 4 holes into the wall, which 3 for screws and 1 for cable. Then hammer the 3 supplied anchors into the screw holes and fix the base plate to a flat surface by the supplied 3 screws.
2. Loosen the screws on the bracket by allen wrench to adjust camera view angle.
3. Tighten the screws at the joints of the bracket.



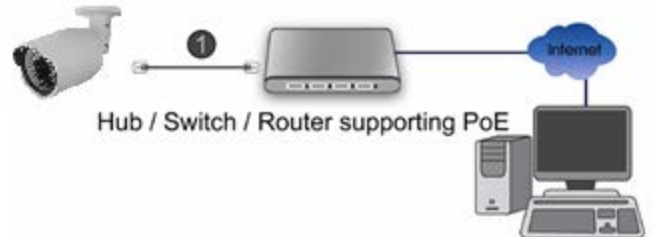
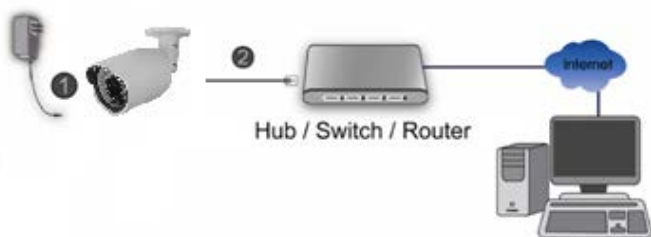
#### b. Connet all cables

##### b1. Without Power over Ethernet (PoE) connection

1. Connect the 12V power adaptor to the IP Camera.
2. Using a standard RJ-45 network cable, connect the IP Camera to a normal Hub/ Switch/ Router.

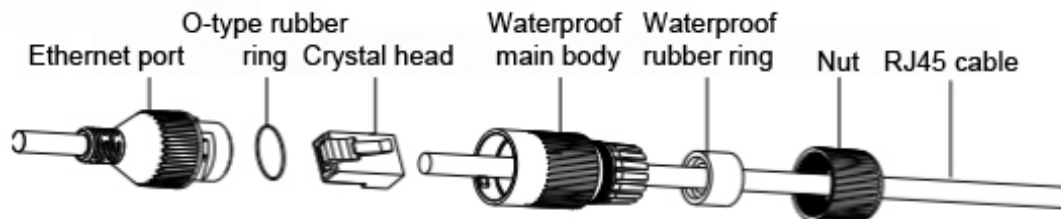
##### b2. Power over Ethernet (PoE)

- Using a standard RJ-45 network cable, connect the IP Camera to a PoE-enabled Hub/ Switch/ Router.



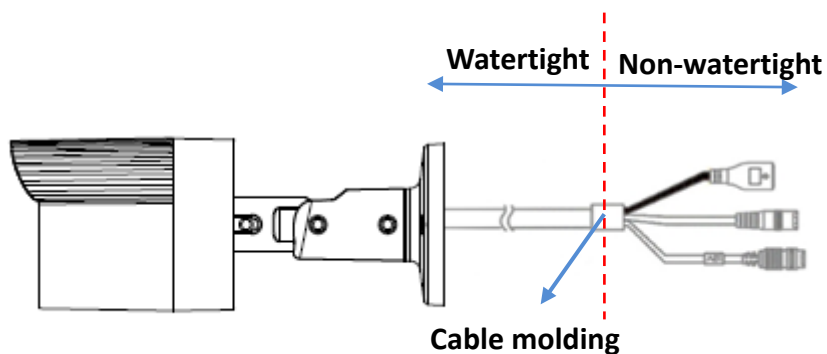
### c. RJ45 waterproof connector

1. Cut the RJ45 crystal head of network cable.
2. Feed the network cable through the fastening nut, waterproof rubber ring, and main body.
3. Re-connect the RJ45 crystal head with network cable and insert it into ethernet port and fasten main body clockwise.



### Note : IP Camera watertight ambit

Mini bullet IP camera uses IP-66 rated weatherproof housing. The image as below shows you the ambit of watertight and non-watertight. Please make sure the cable with plug on the right side of cable molding should be avoided from water.



### Microsoft OS: Go Website download Camera Installation Tool

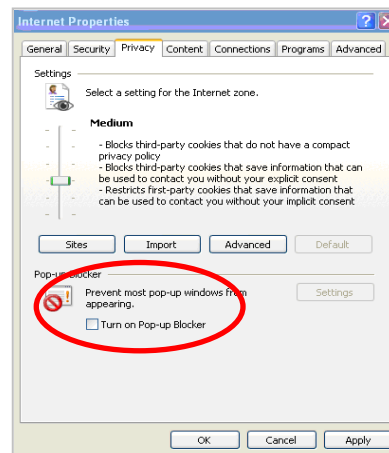
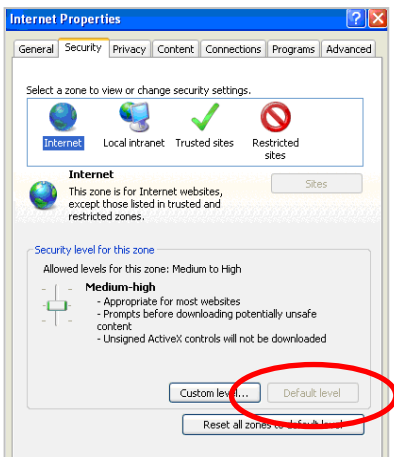
Please go <http://www.champsolution.com/DownloadMainpage.php> download "Camera Installation Tool". And follow the installation process to complete the installation.

## Access the IP Camera using Camera Installation Tool

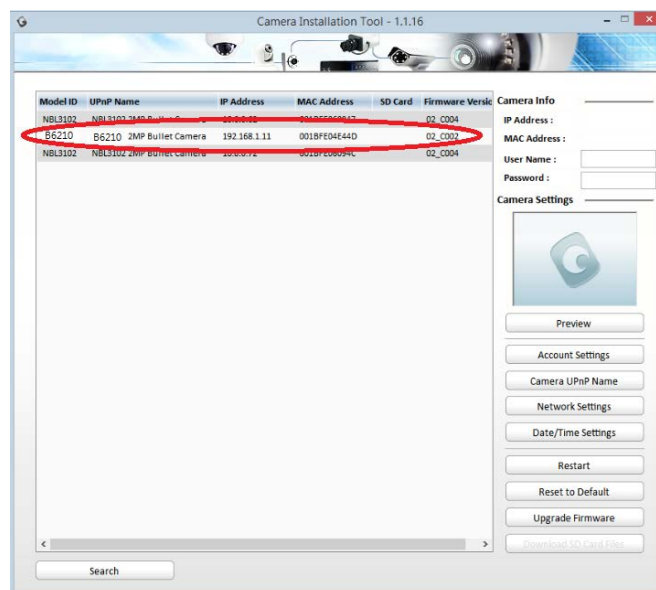
1. Please check two settings before using Camera Installation Tool.

a. Browser's Internet Properties → Security →  
Default Level

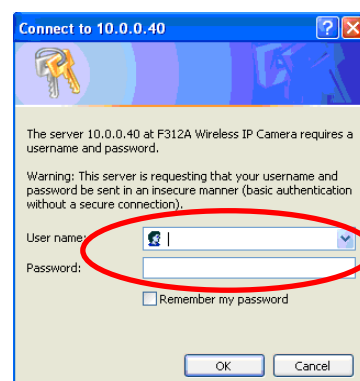
b. Browser's Internet Properties → Privacy  
→ Uncheck Pop-up Blocker



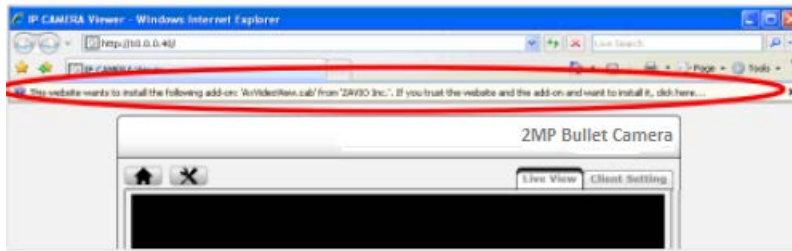
2. Click the Intelligent IP Installer Icon on your desktop. The main page will show up listing all active camera and video server devices. Select the relevant IP camera from the list and click **Link to IE**.



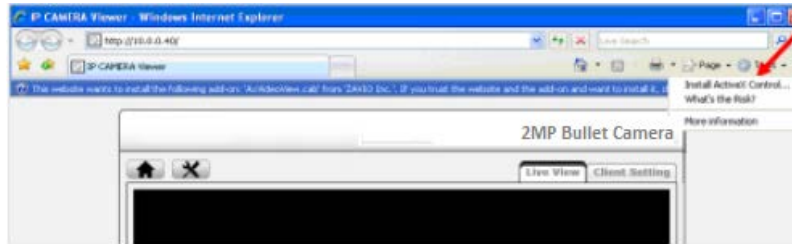
3. Enter your Username and Password to login to the IP Camera.  
**(Default is admin / admin)**



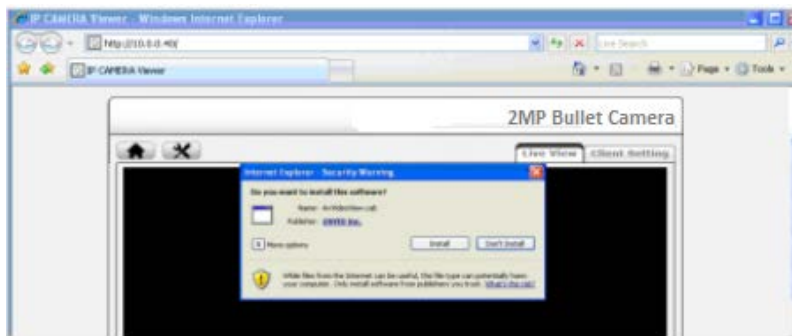
4. When accessing the IP Camera for the first time, a yellow information bar appears below the address bar: **This website wants to install the following add-on: 'AxvideoView.cab'.**



5. Click the information bar, and select **Install ActiveX control.**



6. Click **Install.**

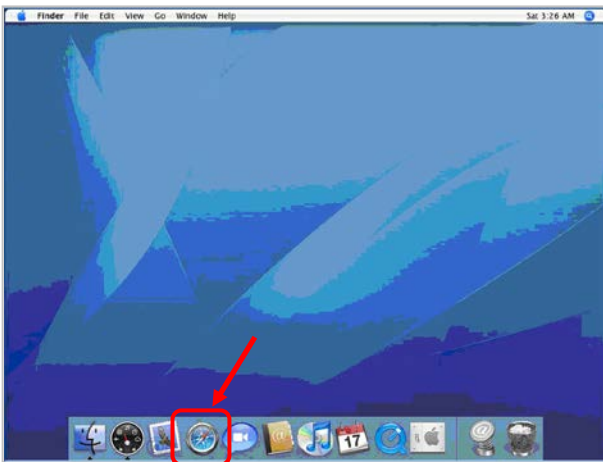


7. Live video displays in the centre of your web browser.

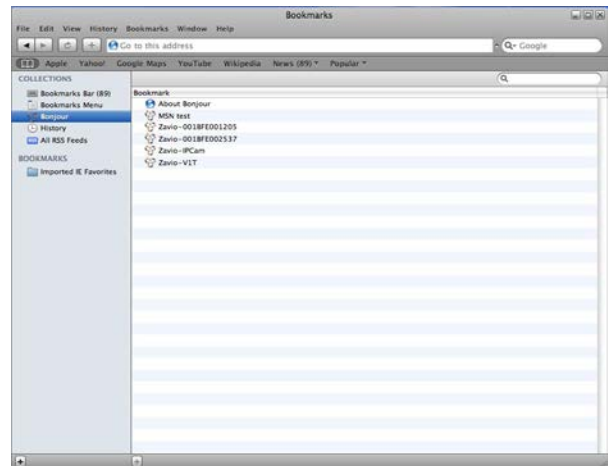


## Mac OS using Safari Browser

1. Select **Safari** icon



2. Click **Bonjour** function and select the camera you wish to access.



3. Enter name and password to login to the IP camera. (**Default is admin / admin**)

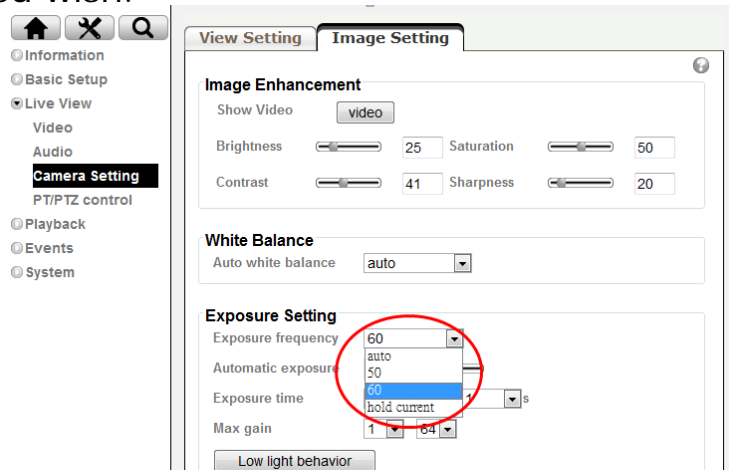


4. The monitor image will be displayed in your browser.



## Lighting environment setting

The default setting of lighting environment is **Auto**. However, you may also select 50 or 60 Hz upon the lighting environment of your country. Go to "Setting > Live View > Camera Setting > Image Setting", select the environment setting you wish.



## Change the Web Interface into your preferred language

Use the settings screen to set the language of the Web Interface.

Go to "Setting > System > Maintenance".

1. Go website <http://www.champsolution.com/DownloadMainpage.php> download language pack.
2. Browse and select the preferred language and then click OK.
3. The web interface will change into your preferred language.

[Upload Language Pack](#)

Upload language pack to this network camera from chosen file:

No file chosen

Language: English







