

# **2MP Dome Camera**

---

## **Quick Installation Guide**

# Quick Installation Guide

Please follow the installation steps below to set up your 2MP Dome IP Camera.

Check the package contents against the list below. **See P.1**

Physical overview. **See P.2**

Install the hardware and connect all cables. **See P.2**

Microsoft OS: Use the software CD to install Intelligent IP Installer. **See P.3**

Access the IP Camera using Intelligent IP Installer. **See P.4**

Mac OS using Safari Browser. **See P.6**

Lighting environment setting. **See P.6**

Change the Web Interface into your preferred language. **See P.7**

Application of IP Camera. **See P.7**

## Package Contents

<b>Camera</b>	2MP Dome IP Camera
<b>Quick Installation Guide</b>	Brief product information and quick installation
<b>Accessory</b>	Screws and anchors for wall and ceiling mounting RJ45 waterproof connector

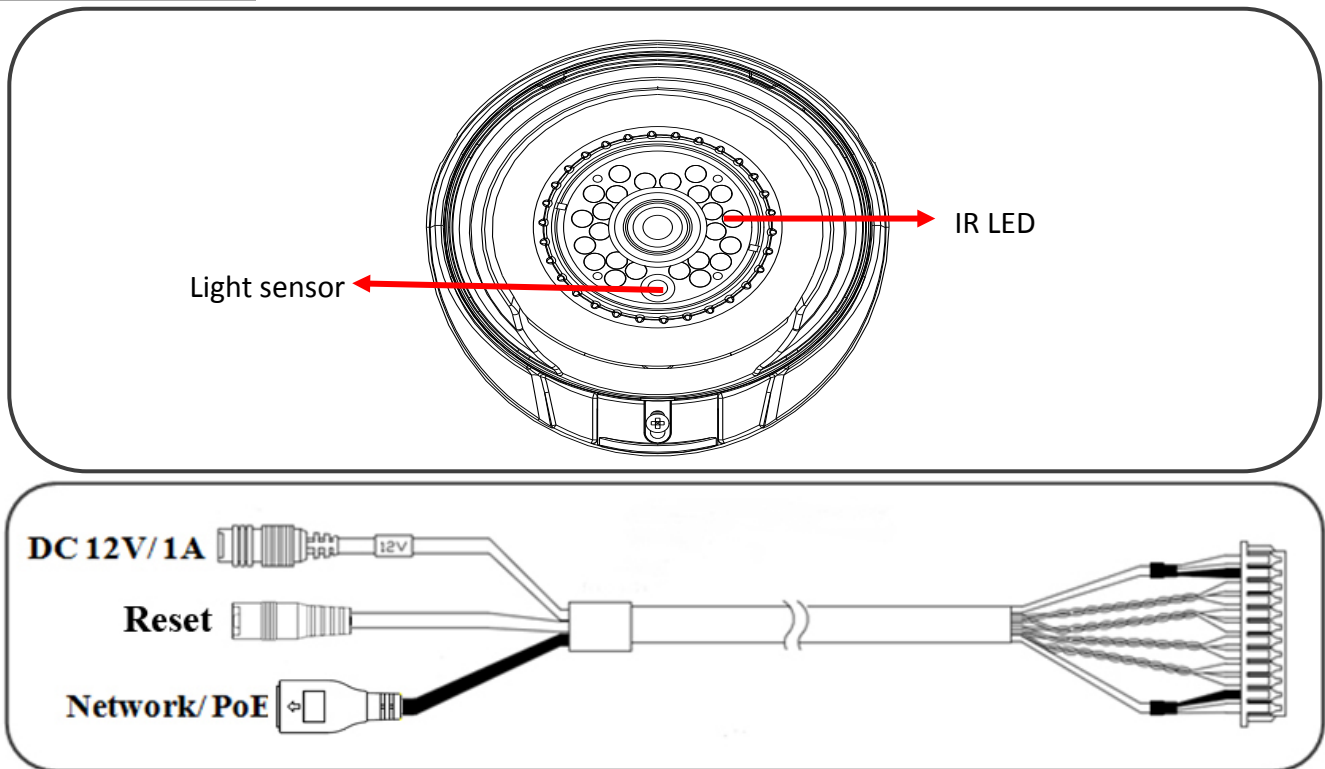
## Software

The following software and information are available online:

- Camera Bundle Software
- Camera Installation Tool
- User manuals

Please go download from <http://www.champsolution.com/DownloadMainpage.php>

## Physical Overview

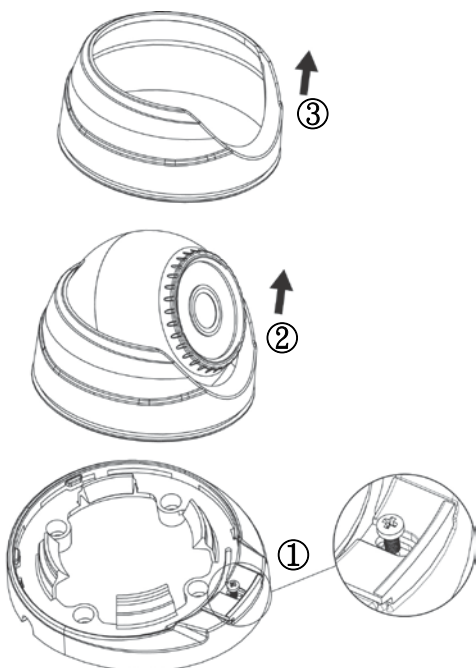


**Reset:** When the device is powered, press the Reset Button to reboot the device, or hold the Reset Button for 15 seconds to the settings back to factory default.

## Install the hardware and connect all cables

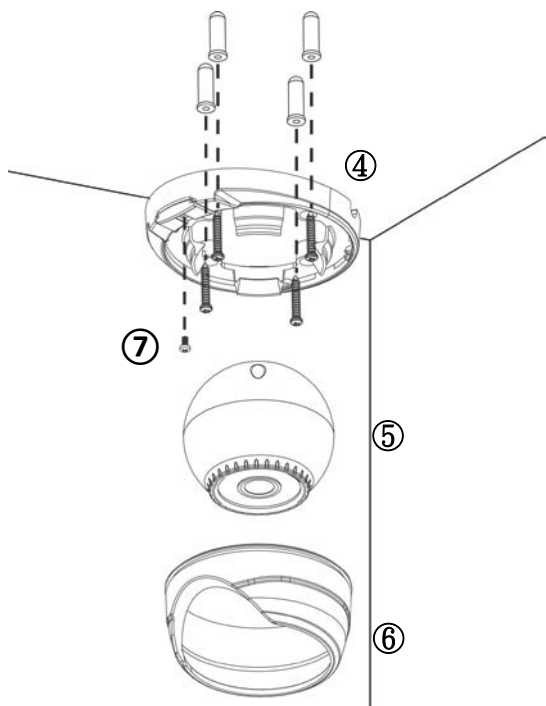
### a. Disassemble eyeball dome camera to 3 parts

1. Remove the tightening screw in the middle of the base plate. (see picture 1)
2. Pull the dome cover and main body upward to separate from the base plate. (see picture 2)
3. Lift the dome cover up. (see picture 3)



## b. Ceiling mounting

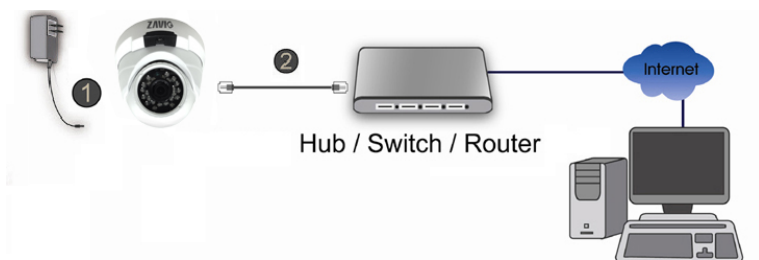
1. After deciding the direction of shooting area, use the 4 supplied screws to fix the base plate to a flat surface. (see picture 4)
2. Rotate the eyeball dome to aim the shooting area. (see picture 5)
3. Lock the dome cover to the base plate, and you can rotate the cover to adjust the scene.
4. Fasten the screw on the base plate. (see picture 7)



## c. Connet all cables

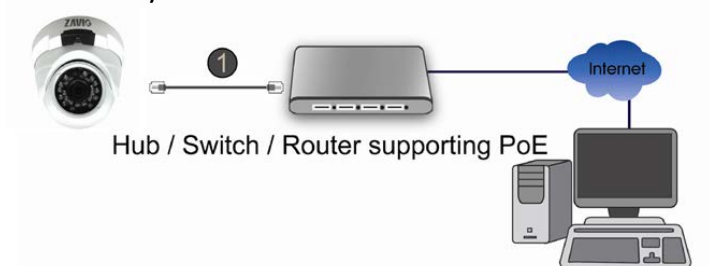
### c1. Without Power over Ethernet (PoE) connection

1. Connect the 12V power adaptor to the IP Camera.
2. Using a standard RJ-45 network cable, connect the IP Camera to a normal Hub/ Switch/ Router.



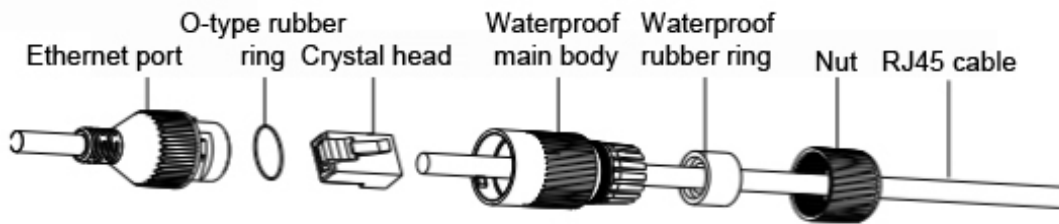
### c2. Power over Ethernet (PoE)

Using a standard RJ-45 network cable, connect the IP Camera to a PoE-enabled Hub/ Switch/ Router.



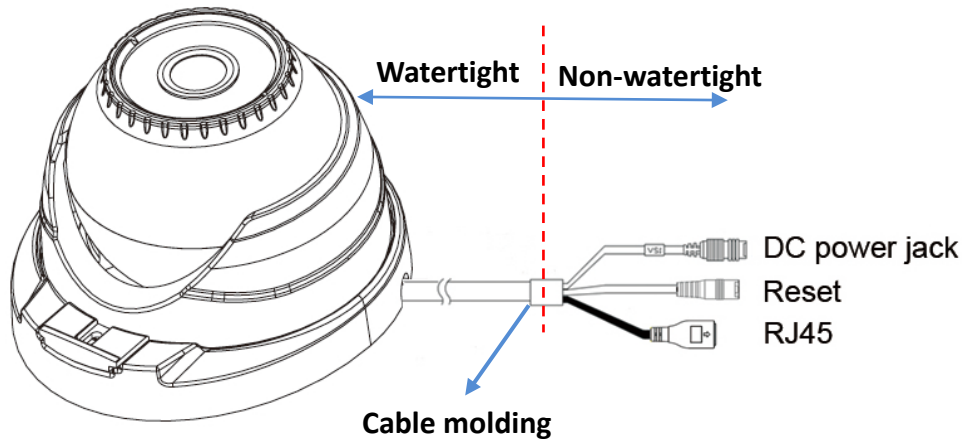
#### d. RJ45 waterproof connector

1. Cut the RJ45 crystal head of network cable.
2. Feed the network cable through the fastening nut, waterproof rubber ring, and main body.
3. Re-connect the RJ45 crystal head with network cable and insert it into ethernet port and fasten main body clockwise



#### Note : IP Camera watertight ambit

2MP Dome IP camera uses IP-66 rated weatherproof housing. The image as below shows you the ambit of watertight and non-watertight, please make sure the cable with plug on the right side of cable molding should be avoided from water.



#### Microsoft OS: Go Website download Camera Installation Tool

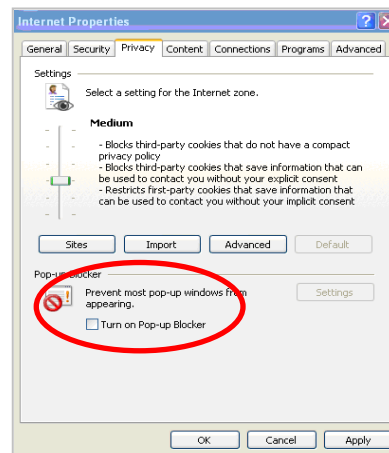
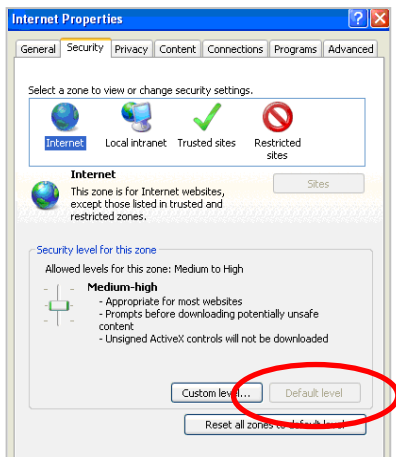
Please go <http://www.champsolution.com/DownloadMainpage.php> download "Camera Installation Tool". And follow the installation process to complete the installation.

## Access the IP Camera using Intelligent IP Installer

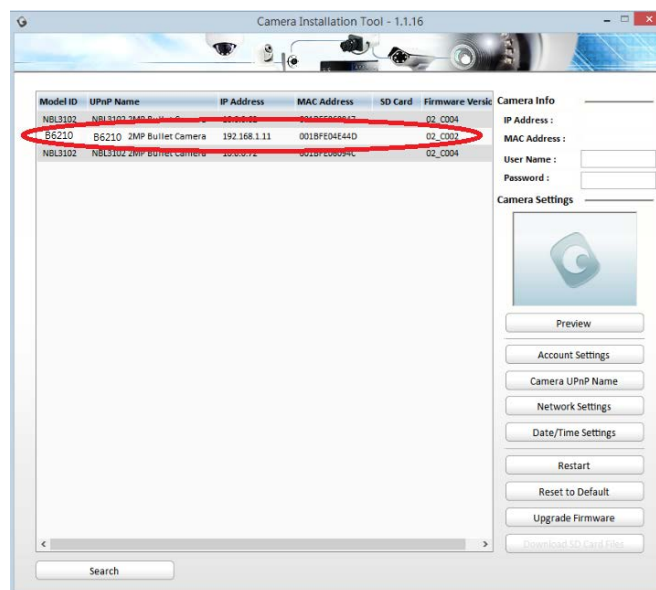
1. Please check two settings before using Intelligent IP Installer.

a. Browser's Internet Properties → Security → Default Level

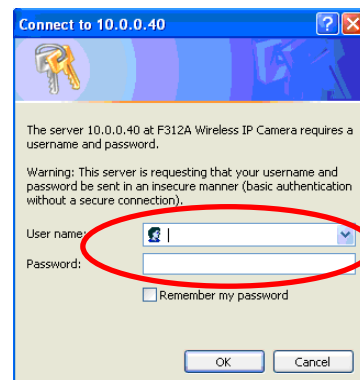
b. Browser's Internet Properties → Privacy → Uncheck Pop-up Blocker



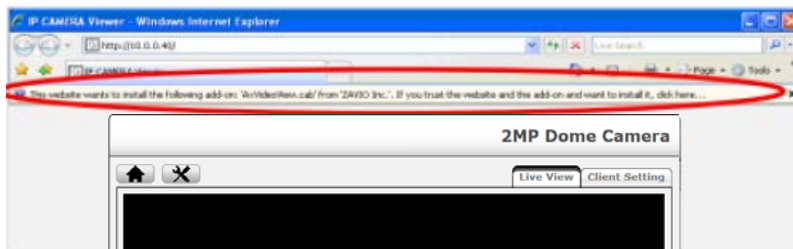
2. Click the Intelligent IP Installer Icon on your desktop. The main page will show up listing all active camera and video server devices. Select the relevant IP camera from the list and click **Link to IE**.



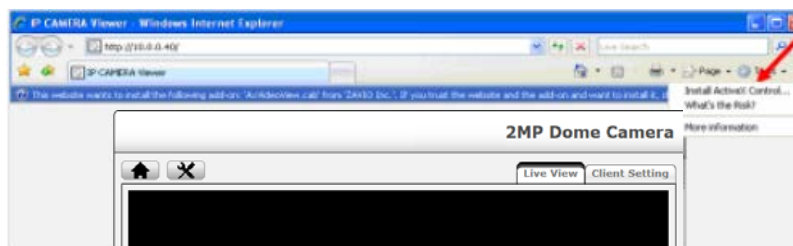
3. Enter your Username and Password to login to the IP Camera.  
**(Default is admin / admin)**



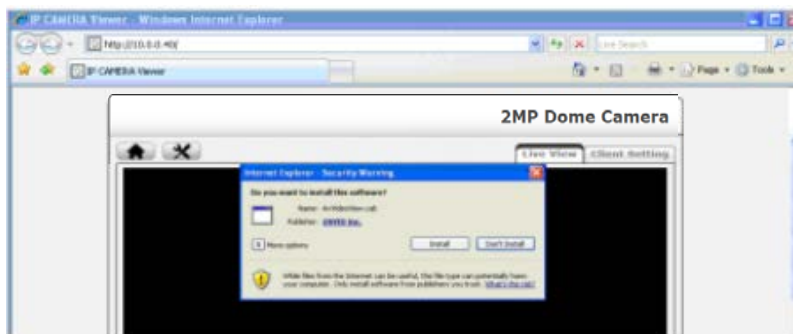
4. When accessing the IP Camera for the first time, a yellow information bar appears below the address bar: **This website wants to install the following add-on: 'AxvideoView.cab'.**



5. Click the information bar, and select **Install ActiveX control.**



6. Click **Install.**

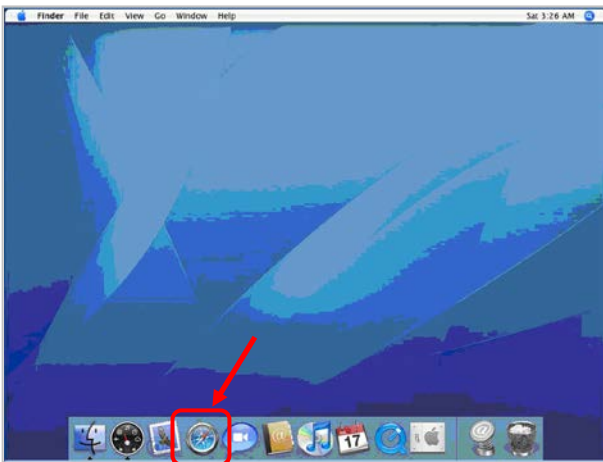


7. Live video displays in the centre of your web browser.

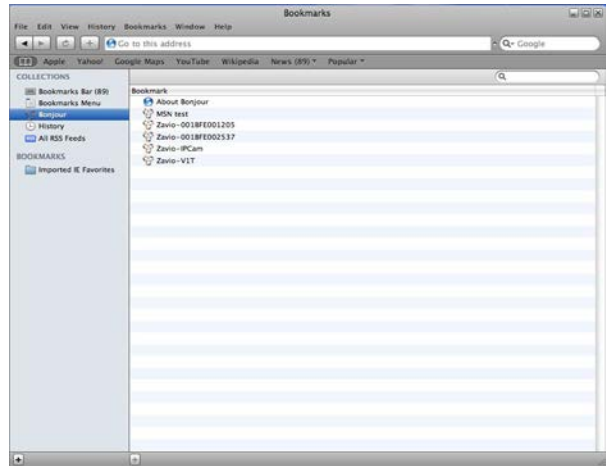


# Mac OS using Safari Browser

1. Select Safari icon



2. Click Bonjour function and select the camera you wish to access.



3. Enter name and password to login to the IP camera. (Default is admin / admin)



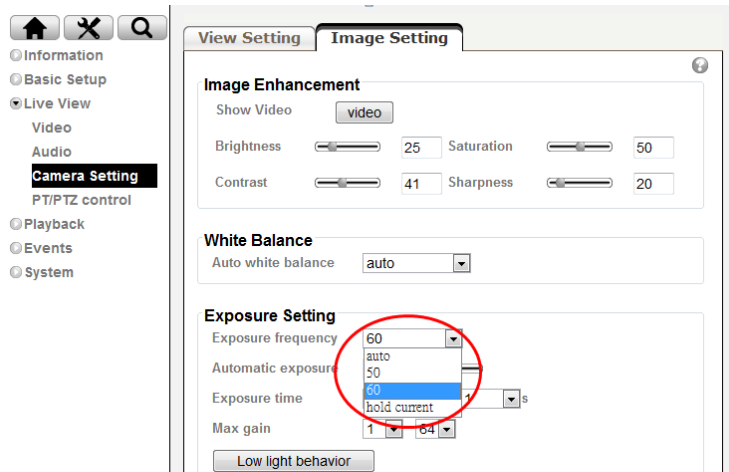
4. The monitor image will be displayed in your browser.



## Lighting environment setting

The default setting of lighting environment is **Auto**. However, you may also select 50 or 60 Hz upon the lighting environment of your country.

Go to "Setting > Live View > Camera Setting > Image Setting", select the environment setting you wish.





## Change the Web Interface into your preferred language

Use the settings screen to set the language of the Web Interface.  
Go to "Setting > System > Maintenance".

1. Go website <http://www.champsolution.com/DownloadMainpage.php> download language pack.
2. Browse and select the preferred language and then click OK.
3. The web interface will change into your preferred language.

## Application of IP Camera

