

Outdoor Motorized Dome

Quick Installation Guide

86085A3340020

Outdoor Motorized Dome Quick Installation Guide

Please follow the installation steps below to set up Outdoor Motorized Dome IP Camera.

Check the package contents against the list below. **See P.1**

Physical overview. **See P.2**

I/O Terminal Block Circuit. **See P.3**

I/O Terminal Block Pin Definition. **See P.3**

LED Indicator Definition. **See P.4**

Power mode. **See P.4**

Install the hardware and connect all cables. **See P.5**

Microsoft OS: Use the software CD to install Camera Installation Tool. **See P.8**

Access the IP Camera using Camera Installation Tool. **See P.9**

Mac OS using Safari Browser. **See P.11**

Change light environment setting. **See P.12**

Change the Web Interface into your preferred language. **See P.12**

Application of IP Camera. **See P.13**

For more information, please check the User Manual available in the Software CD.

Package Contents

Camera	Outdoor Motorized Dome
Quick Installation Guide	Brief product information and quick installation
Accessory	Mounting plate Screw pack for wall and ceiling mounting Alignment sticker L-type Hex Key Wrench 2pin I/O terminal block for power

Software

The following software and information are available online:

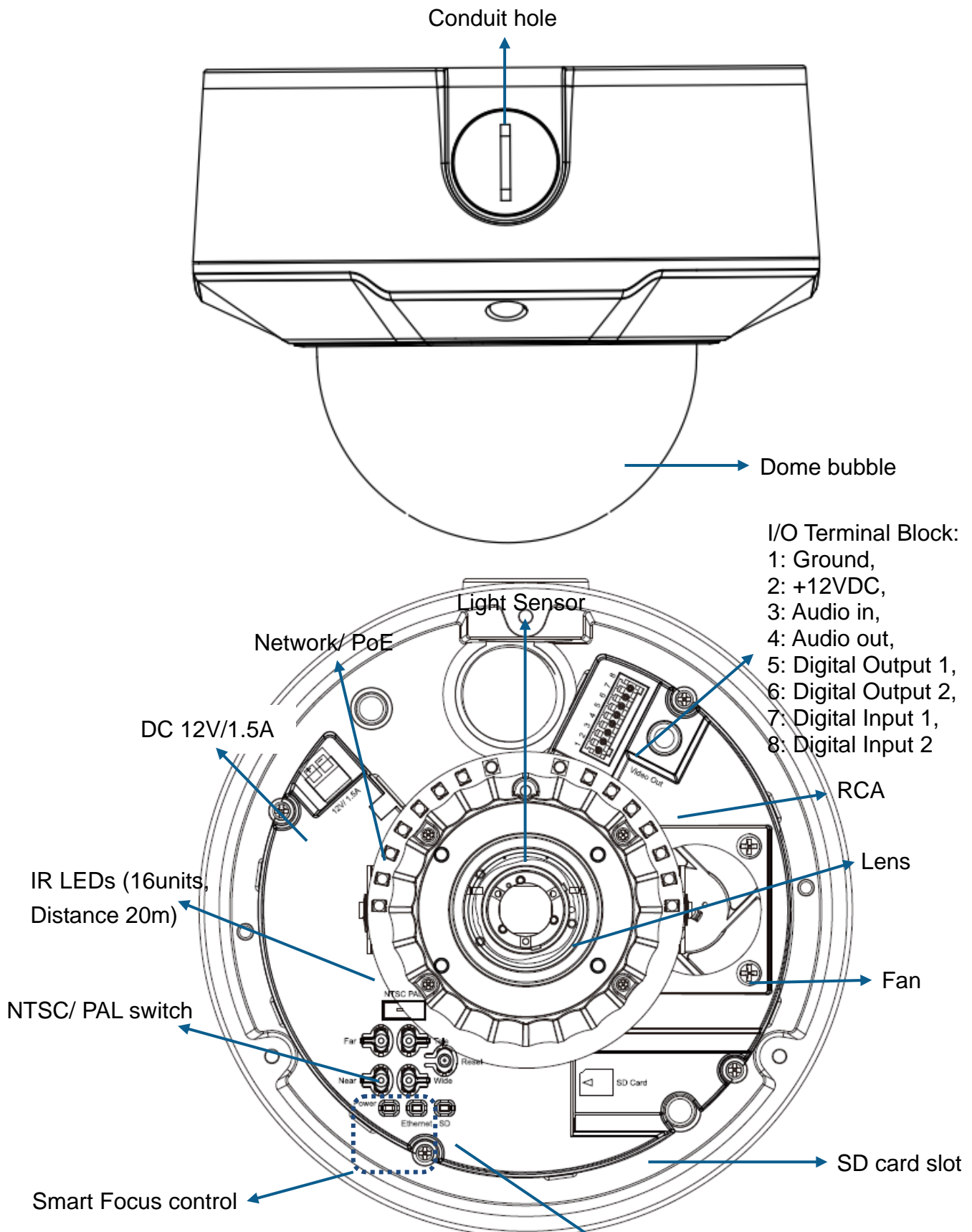
- Camera Bundle Software
- Camera Installation Tool
- User manuals

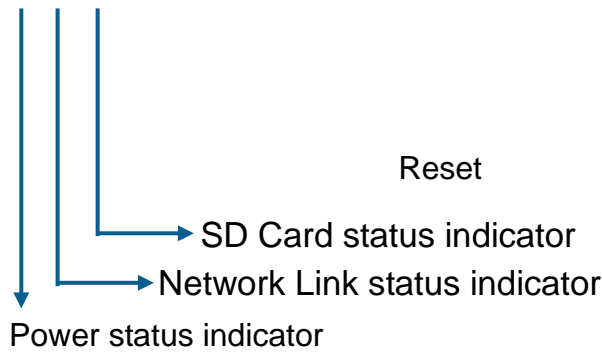
Please go download from <http://www.champsolution.com/DownloadMainpage.php>

Note:

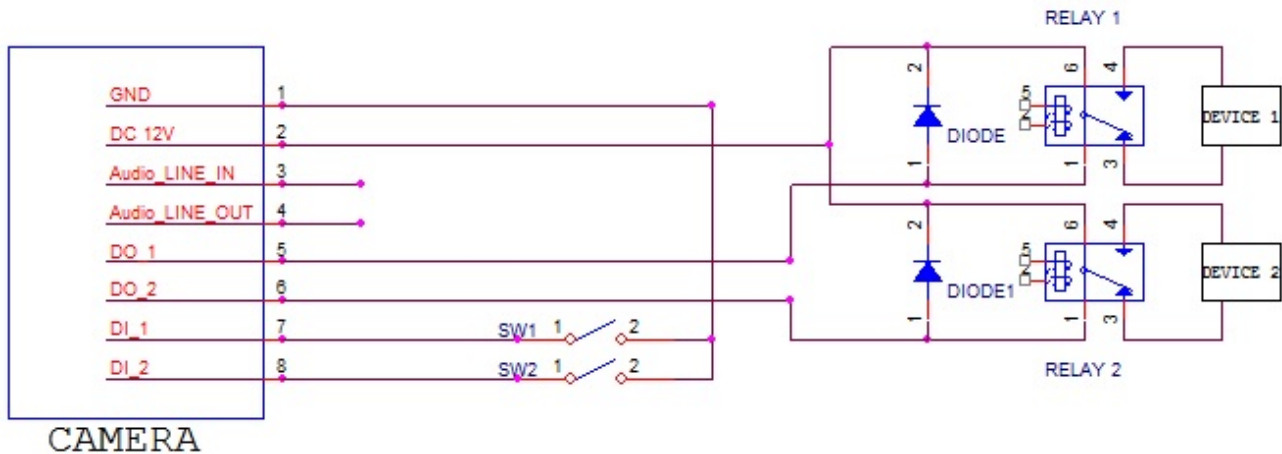
Power Adapter and CAT5 cables are supplied by user. 2pin I/O terminal block is for DC 12V Power Adapter used.

Physical overview





I/O Terminal Block Circuit

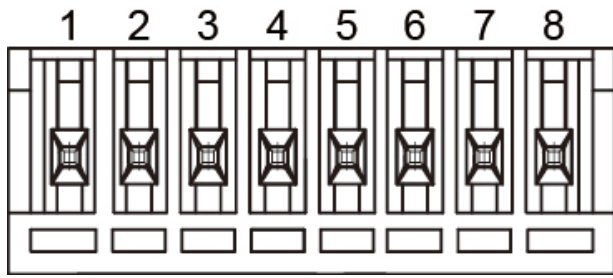


I/O Terminal Block Pin Definition

This Camera provides an external I/O terminal block which is used to connect input/ output devices.

The pin definitions are described below.

PIN	Definition	Description	Max. V/A
1	Ground		-
2	+ 12VDC		12V DC 1.2 W
3	Audio In	Unbalanced, 1.4Vp-p, 1Vrms, terminal block	-
4	Audio Out	Unbalanced, 1.4Vp-p, 1Vrms, terminal block	-
5	Digital Output 1	Uses an NPN transistor with the emitter connected to the GND pin. If used with an external relay, a diode must be connected in parallel with the load for protection against voltage transients.	100 mA 24V
6	Digital Output 2	Uses an NPN transistor with the emitter connected to the GND pin. If used with an external relay, a diode must be connected in parallel with the load for protection against voltage transients.	100 mA 24V
7	Digital Input 1	Connected to GND to activate, or leave floating (or unconnected) to deactivate.	30V DC
8	Digital Input 2	Connected to GND to activate, or leave floating (or unconnected) to deactivate.	30V DC



LED Indicator Definition

LED	Color	Indication
Network	Blue	Steady blue for Network link
		Flash blue while Network activity
Power	Red	Steady red for booting up process
	Blue	Steady blue for booting up completion
	Unlit	when reset button pressed for at least 5 sec. to factory default
SD Card	Yellow	Steady yellow means SD card ready
		Flashes yellow while accessing SD card

Reset: When the device is empowered, press the Reset Button to reboot the device, or hold the Reset Button for 10 seconds to the settings back to factory default.

Reset process: Press reset button until indicator Unlit→steady red (booting up process)→steady blue (booting up completion)

Reset to default process: Press until indicator steady blue→steady red (booting up process)→steady blue (booting up completion)

Power Mode

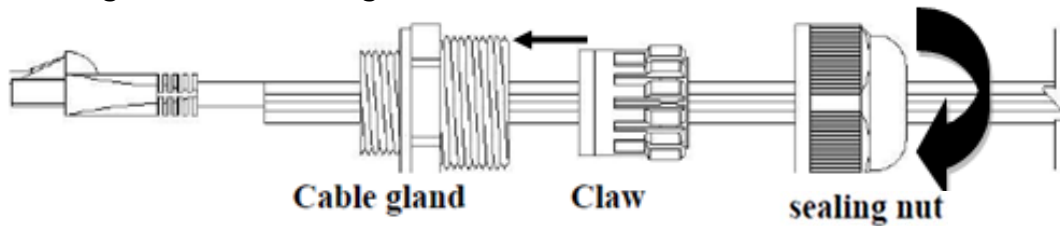
PoE Mode	at	Power Requirement	PoE (IEEE802.3at) with Class 4
		Power Consumption	3.67W, without IR/ Fan 12.79 W, with max. IR on 5.04 W, with max. Fan on 14.05 W, with max. IR(100%) and Fan on
	af	Power Requirement	PoE (IEEE802.3af) with Class 3
		Power Consumption	3.67 W, without IR/ Fan 9.21 W, with max. IR on 5.04 W, with max. Fan on 10.81 W, with max. IR(70%) and Fan on
Adaptor Mode	Power Requirement		12V/1.5A Adaptor
	Power Consumption		3.67 W, without IR/ Fan 13.1 W, with max. IR on 5.04 W, with max. Fan on 14.26 W, with max. IR and Fan on

Note: Fan will be activated while the inner temperature above 50°C and will be inactivated while it drops under 45°C.

Install the hardware and connect all cables

A. Hardware Installation

- Connect the power adaptor to the supplied 2pin I/O terminal block. Please make sure the red wire of the power adaptor is connected with the positive polarity of the terminal block.
- Loosen the tamper-proof screws using supplied L-type Hex Key Wrench and remove the dome cover. Be careful not to scratch the dome cover.
- Disassemble the cable gland as shown in below illustration.
- Feed the network and I/O cable through the sealing nut, claw and cable gland. Connect the cables to the camera. Attach the cable gland to the conduit hole. Push the claw into the cable gland and tighten the sealing nut to secure the cables.

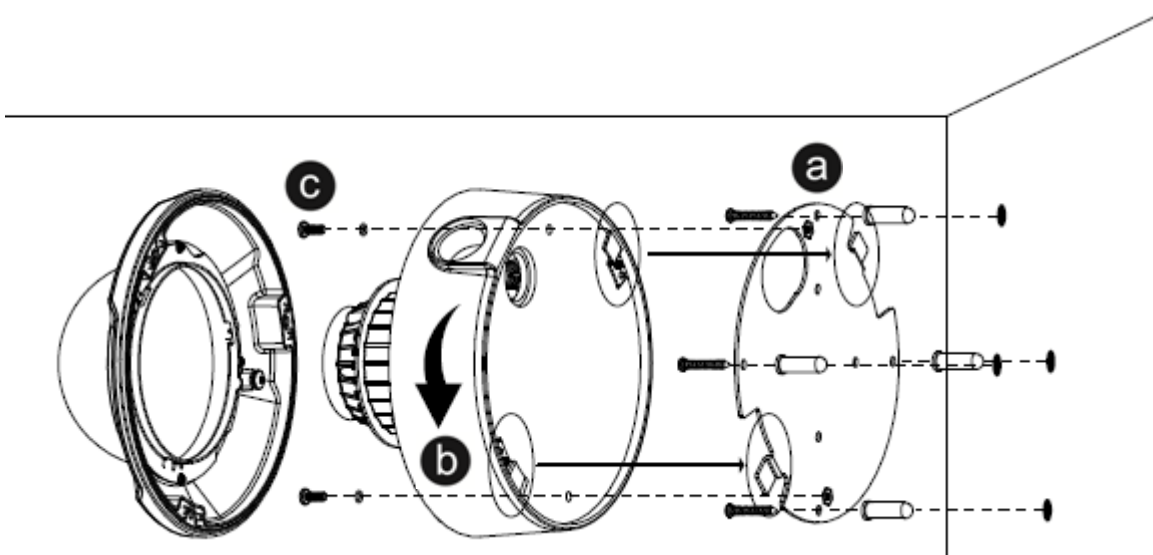


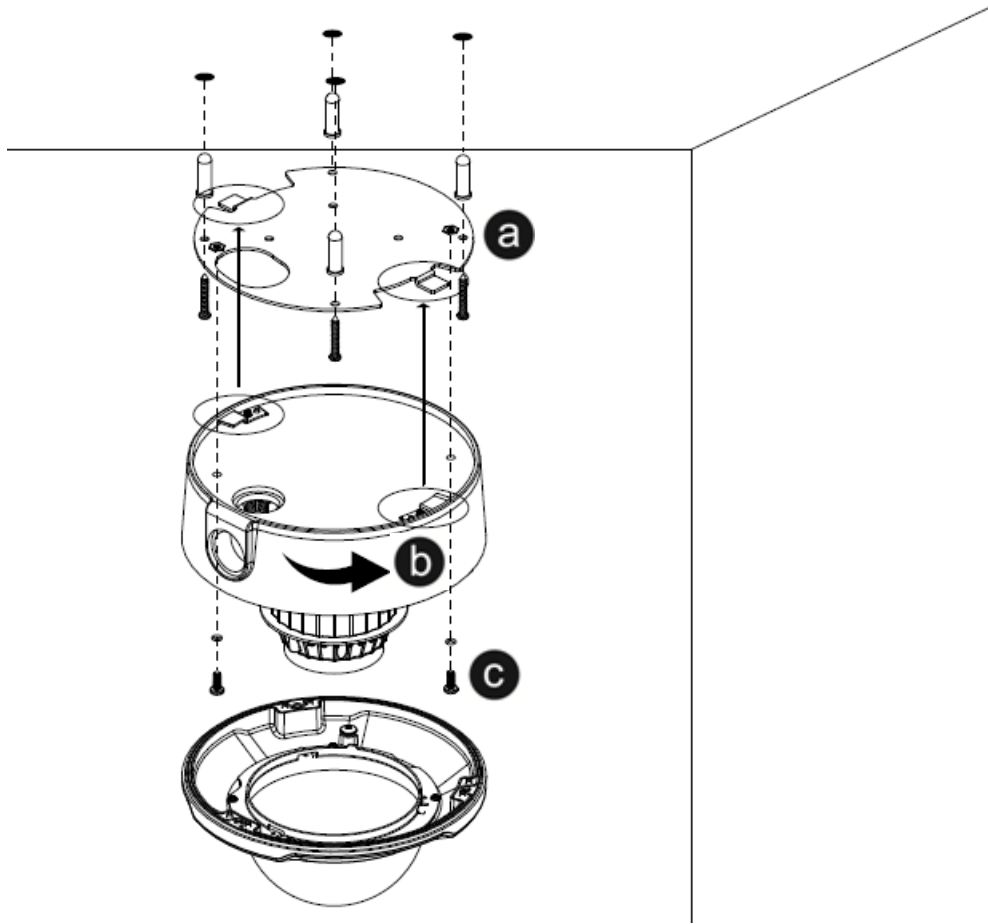
Note: The size of Cable gland is M25*1.5

- Use the supplied blind plug to fill unused conduit hole.
- Use of the cable gland is optional. For vandal-proof requirement of the cables, use vandal-proof conduits instead.

B. Wall mounting and Ceiling mounting

- Attach the alignment sticker to the wall/ceiling. Drill five holes into the wall, four for screws and one for the cable. Then hammer the supplied plastic anchors into the screw holes and secure the mounting plate with supplied screws.
- Attach the camera to the mounting plate and turn the camera clockwise until the clips snap to the mounting plate.
- Put the O-rings on the two supplied screws and fix the camera to the mounting plate from inside with them to prevent unauthorized removal.

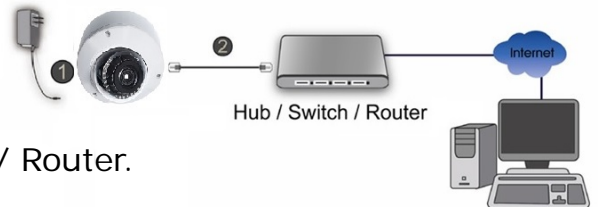




C. Connect all cables

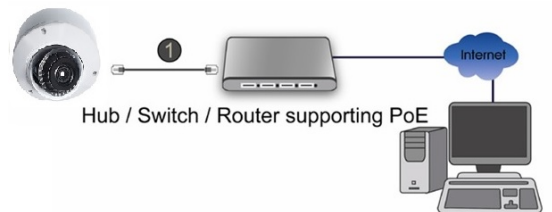
c1. Without Power over Ethernet (PoE) connection

1. Connect the power adaptor to the IP Camera.
2. Connect the IP Camera to a normal Hub / Switch / Router.



c2. Power over Ethernet (PoE)

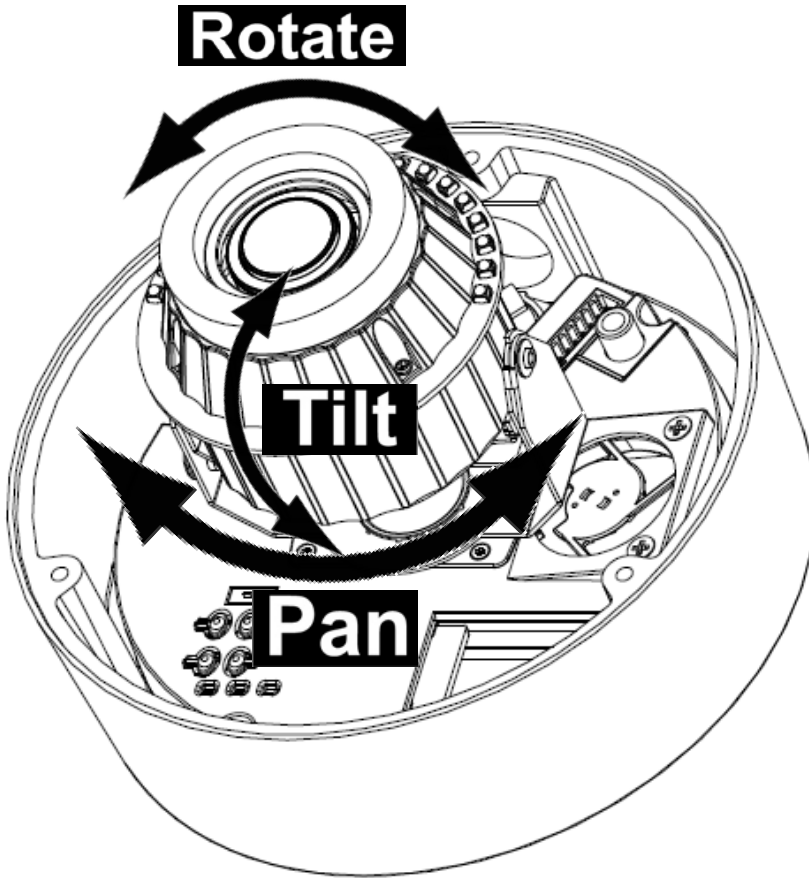
1. Connect the IP Camera to a PoE-enabled Hub / Switch / Router.



Note:
If using a non-PoE switch, please use a PoE power injector to connect the camera.

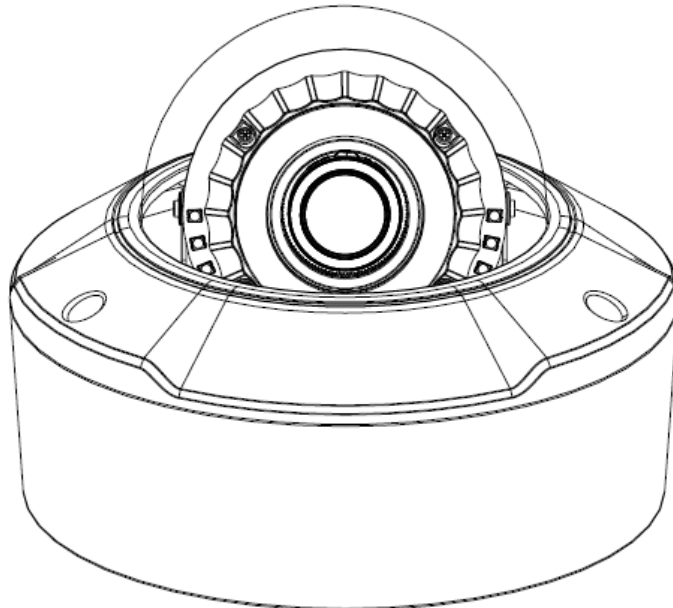
D. To adjust the view angle- 3 axis Mechanism Design

1. Turn the lens module right and left to your desired pan position.
2. Turn the lens module up and down to your desire tile position.
3. Turn the lens module to adjust the image orientation to satisfied angle.



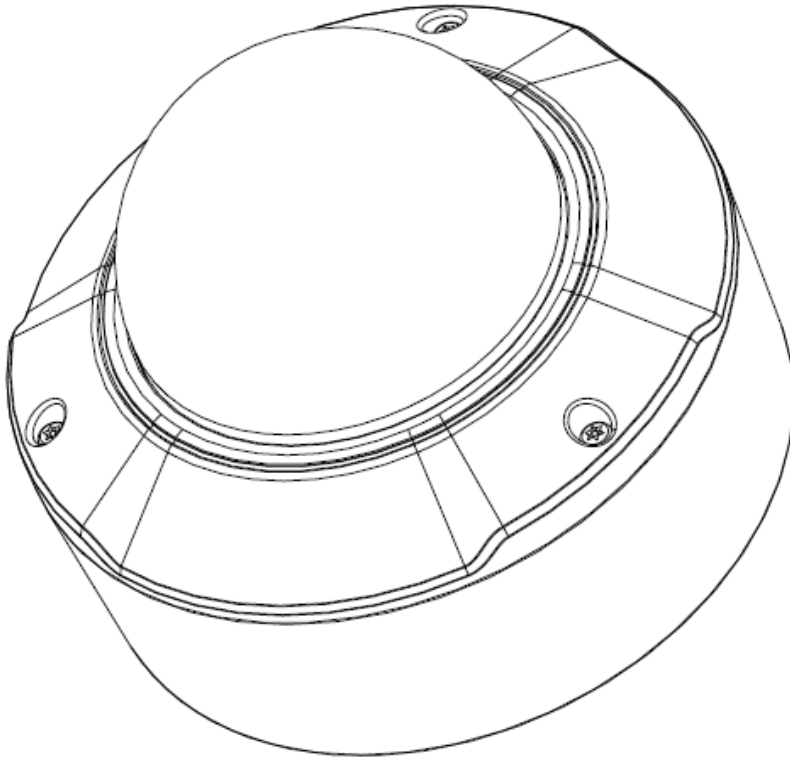
Important:

Do not rotate the IR LEDs so that it gets blocked by the housing as it will affect the IR performance (as shown below). If the image is upside down, please use the image rotate function in Video Setting.



E. Completion

1. Clean the dome bubble to remove the dust and finger print.
2. Fix the tamper-proof screws using supplied special hex. Be careful do not scratch the cover glass.
3. The installation is complete now.



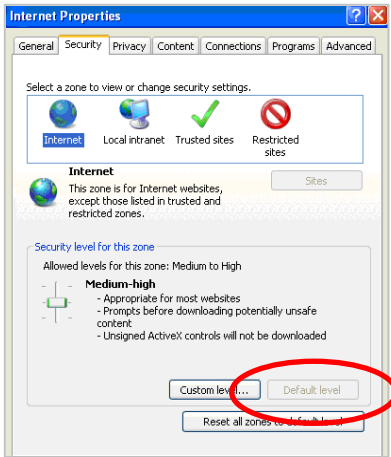
Microsoft OS: Go Website download Camera Installation Tool

Please go <http://www.champsolution.com/DownloadMainpage.php> download "**Camera Installation Tool**". And follow the installation process to complete the installation.

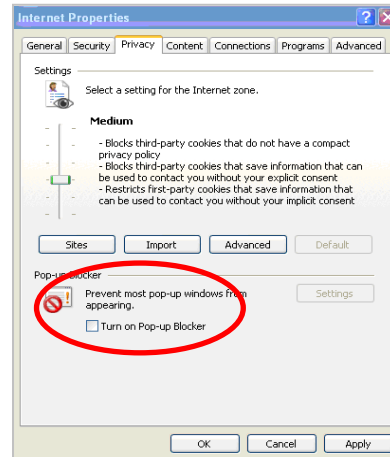
Access the IP Camera using Camera Installation Tool

1. Please check two settings before using Camera Installation Tool .

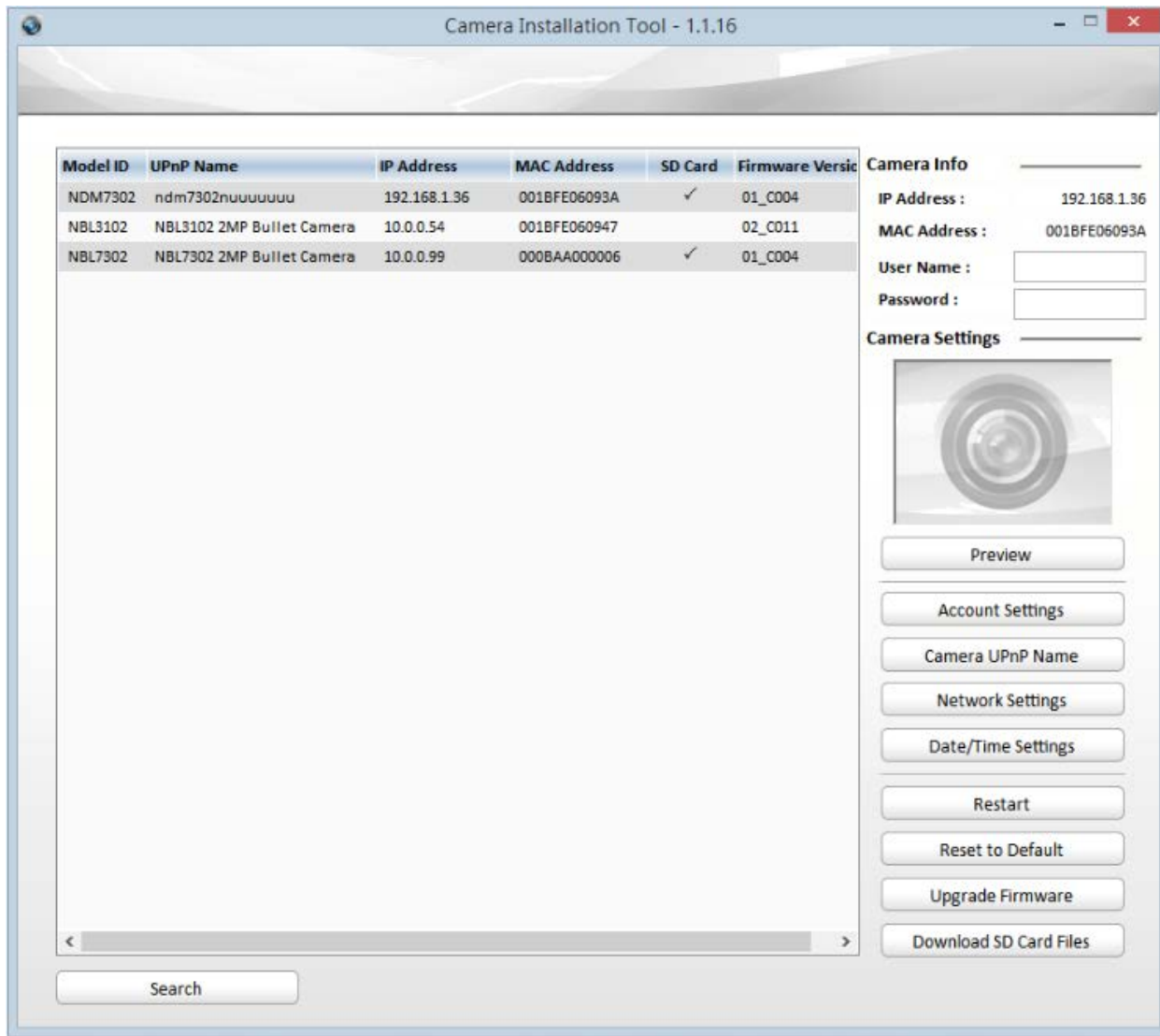
a. Browser's Internet Properties → Security → **Default Level**



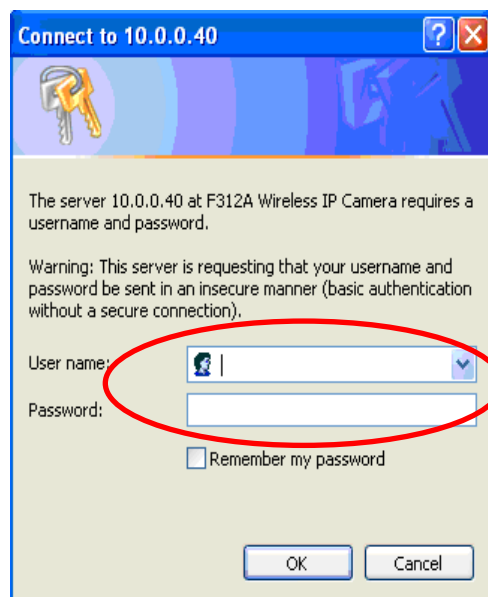
b. Browser's Internet Properties → Privacy → Uncheck **Pop-up Blocker**



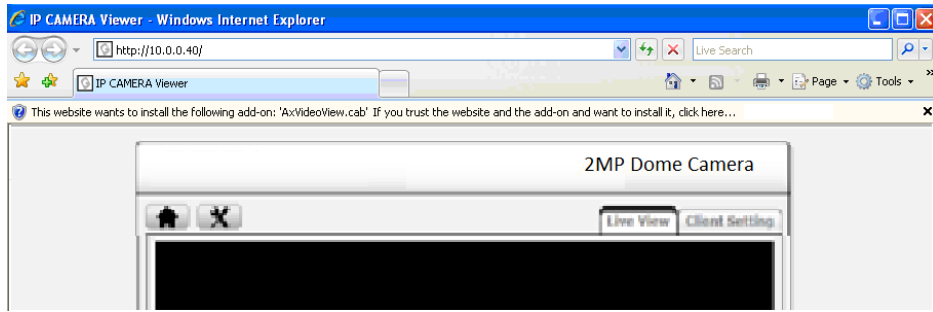
2. Click the Camera Installation Tool Icon on your desktop. The main page will show up listing all active camera and video server devices. Select the relevant IP camera from the list and click **Link to IE**.



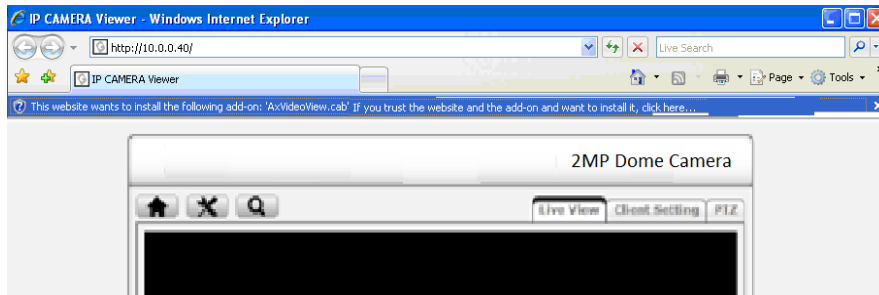
3. Enter your Username and Password to login to the IP Camera. **(Default is admin / admin)**



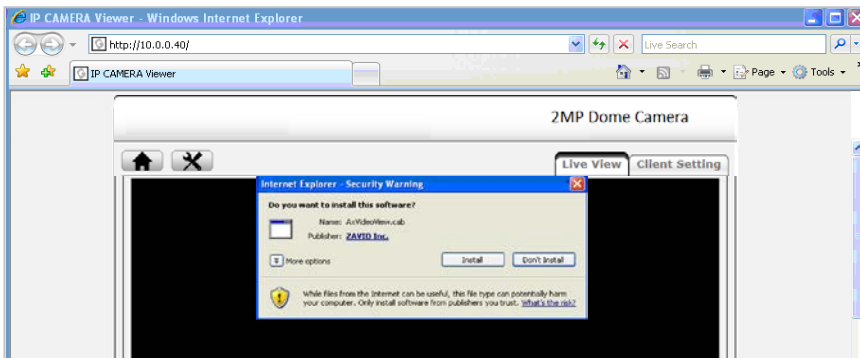
4. When accessing the IP Camera for the first time, a yellow information bar appears below the address bar: **This website wants to install the following add-on: 'AxvideoView.cab'**.



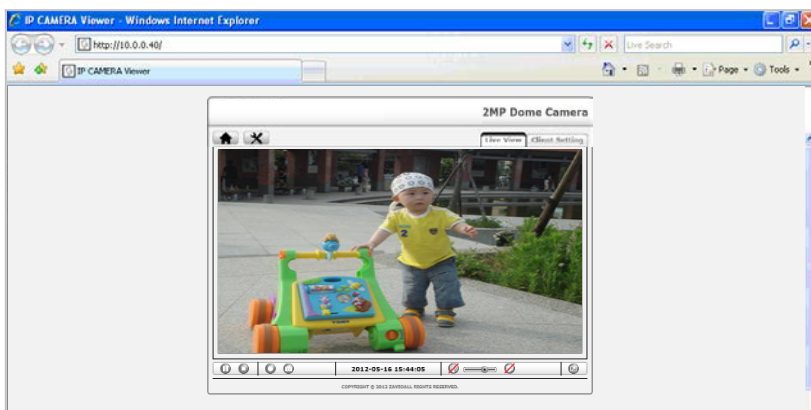
5. Click the information bar, and select **Install ActiveX**



6. Click **Install**.



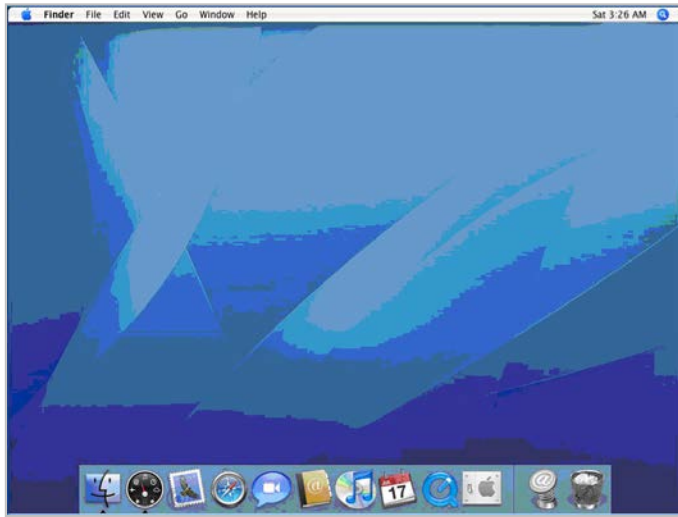
7. Live video displays in the centre of your web



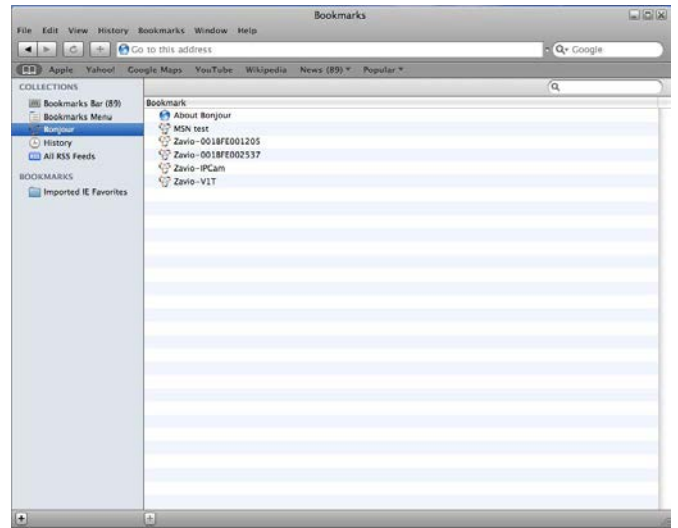
Mac OS using Safari Browser

1. Select **Safari icon**

2. Click **Bonjour function** and select the camera you wish to access.



3. Enter name and password to login to the IP camera. (**Default is admin / admin**)



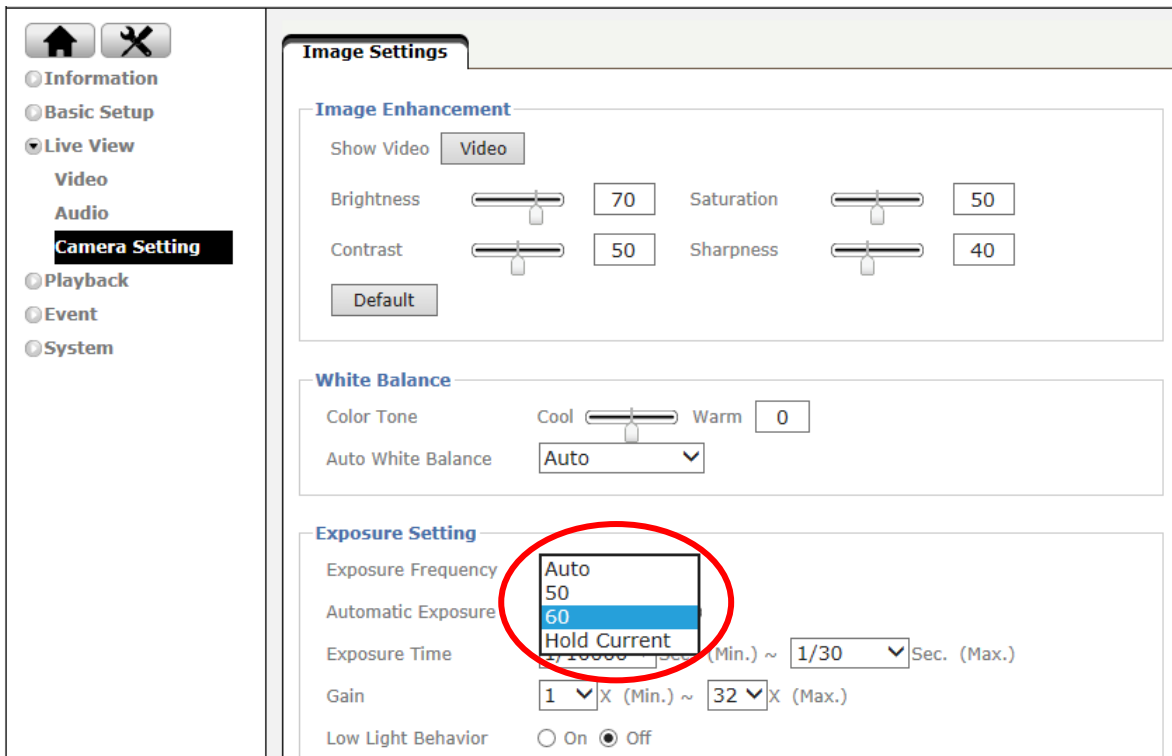
4. The monitor image will be displayed in your browser.



Lighting environment setting

The default setting of lighting environment is **Auto**. However, you may also select 50 or 60 Hz upon the lighting environment of your country.

Go to "Setting > Live View > Camera Setting > Image Setting", select the environment setting you wish.



Change the Web Interface into your preferred language

Use the settings screen to set the language of the Web Interface.

Go to "Setting > System > Maintenance".

1. Go website <http://www.champsolution.com/DownloadMainpage.php> download language pack.
2. Browse and select the preferred language and then click OK.
3. The web interface will change into your preferred language.



Memo

.....
.....
.....
.....
.....
.....
.....
.....
.....
.....
.....
.....
.....
.....
.....
.....
.....
.....
.....
.....
.....
.....
.....
.....
.....

