

3.2 New Selling Point

2009.06.30



New Feature

- Remote Live Stream Profile
 - Transcode Recording
 - Digital WaterMark
 - 128 Ch Remote Live Viewer
 - PDA Client / Smart Phone Client
-
- DVD backup
 - On line license

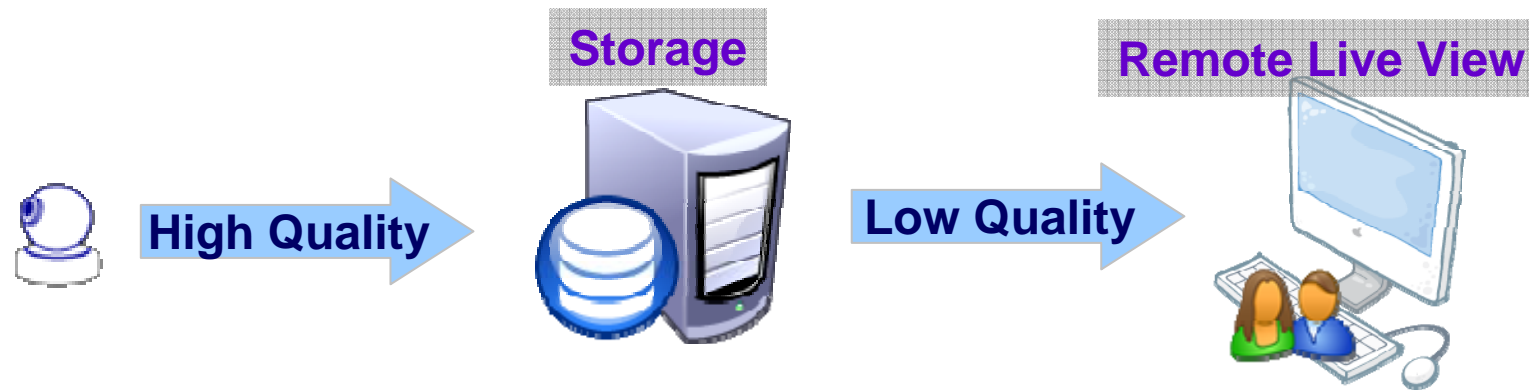
Main Improve

- Full Screen E-map
- New User Account Authority
- Handy I/O Control Panel
- Flexible On screen display warning
- Resource management Tool
- Execute Remote Client on non-admin OS

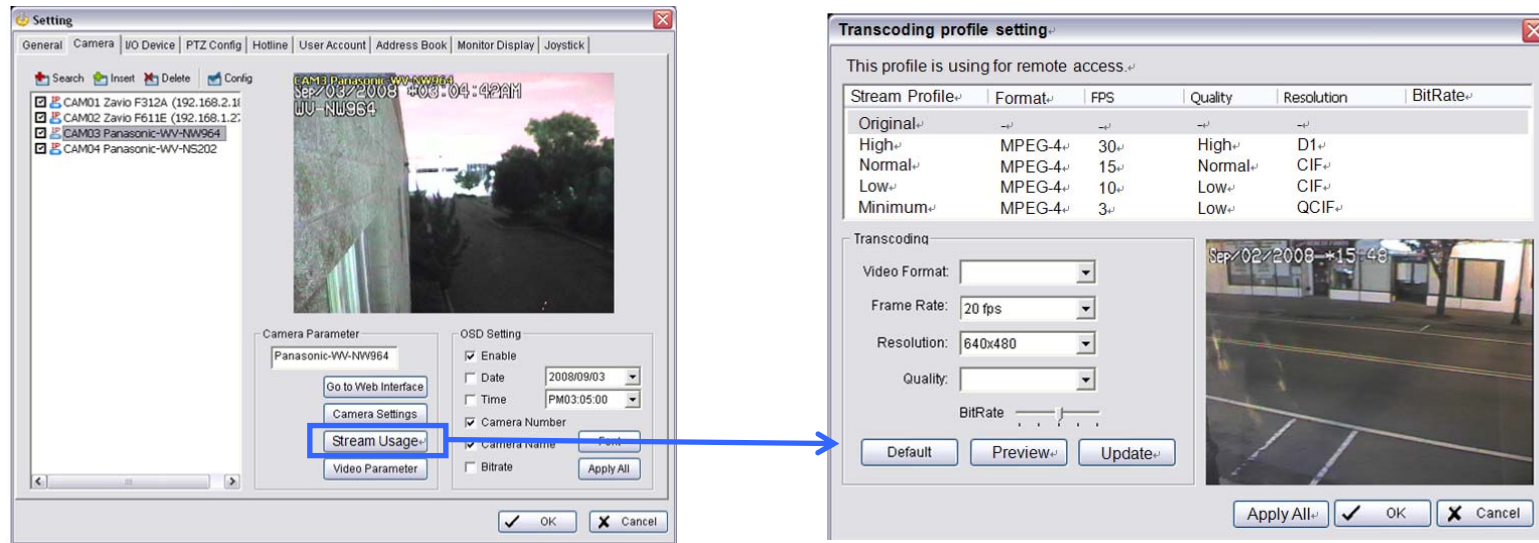
New Feature

1. Remote Live Stream Profile

- *To Save the bandwidth usage*



■ How to Setup?



■ How to Use?



New Feature

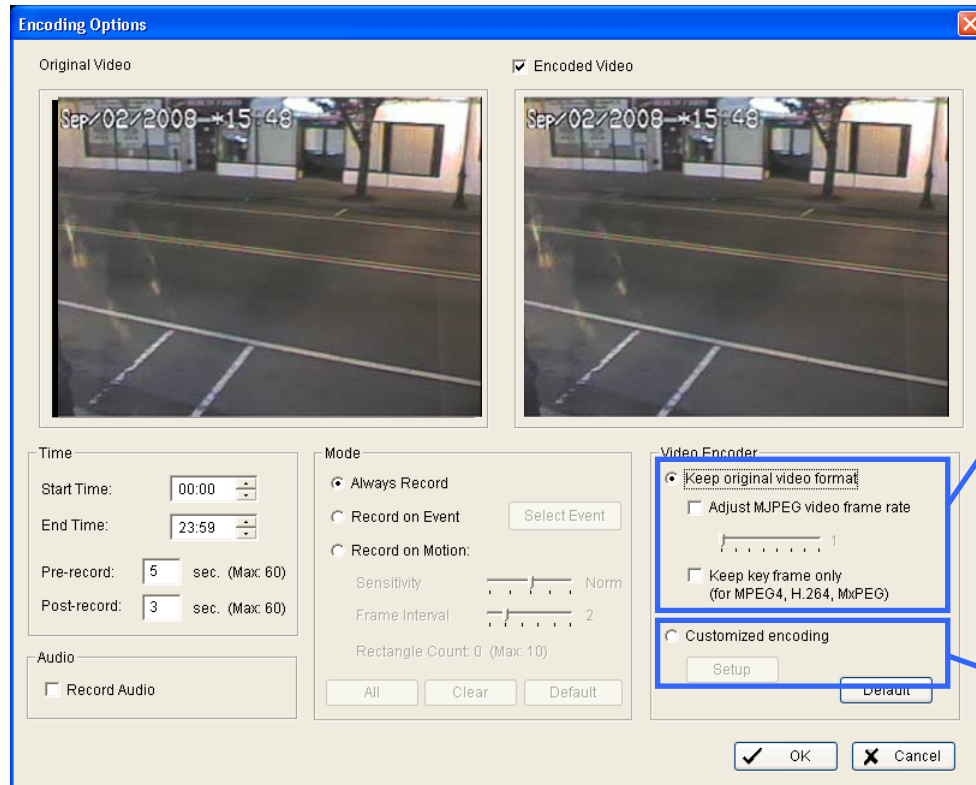
2. Transcode Recording

- *To Save the storage usage*

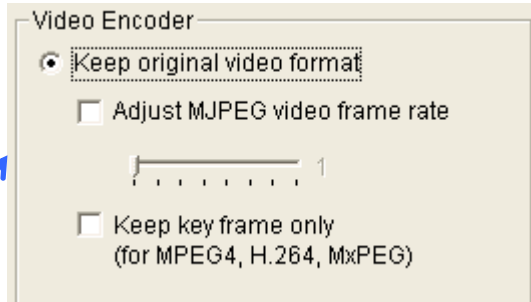
High Quality Live View



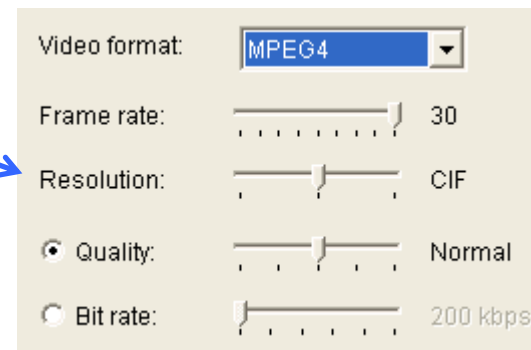
■ How to Use?



Drop Frame Only



Customized Encoding



New Feature



3. Digital Watermark

- *To improve data security*
- Apply :
 - a. Recording file: .dat, .264
 - b. Video: AVI,ASF.
 - c. Image: BMP,JPG.

■ *How to Verify File?*

Import File **Verify Result**

The screenshot shows the 'Verification Tool' window. At the top left, there are icons for file operations, with a blue box highlighting the 'Import File' icon. Below this is a table of files with columns: File Name, Wat..., Start Time, End Time, Cam Name, and Path. Three files are listed, each with a green checkmark in the 'Wat...' column, which is highlighted by a blue box. An arrow points from this box to the 'Verify Result' label. To the right of the table is a 'Video Preview' window, which is currently black. Below the table and preview are two status/verify panels. The left panel shows 'Status :', 'Number of Verified Files : 3 files', and 'Number of Passed Files : 3 files'. The right panel shows 'Verify :', 'Time elapsed : 00 : 00 : 843', and 'Time left : 00 : 00 : 000'. Below these panels is a control bar with a play button, a person icon, and a stop button, all highlighted by a blue box. An arrow points from this box to the 'Verify Tool' label.

File Name	Wat...	Start Time	End Time	Cam Name	Path
C00002S00A20090628210253...	✓	2009/06/...	2009/06/...	AXIS Q17...	G:\N
AXIS M1031-W.asf	✓	2009/06/...	2009/06/...	AXIS M10...	D:\D
camera 2 AXIS M1031-W.bmp	✓	2009/06/...	2009/06/...	AXIS M10...	D:\D

Verify Tool

New Feature

4. 128 ch Remote Live View



- Powerful remote client
- Spec :
 - a. 128 connection
 - b. 8x8 layout & auto scan
 - c. Multi-monitor
 - d. Digital PTZ & multi-view
 - e. On screen Smart Guard warning
 - f. POS display

New Feature

5. PDA/Smart Phone Client

- ***Mobile surveillance***
- Spec :
 - a. 16 connection for instant snapshot
 - b. 1 channel live view
 - c. Remote PTZ Control
 - d. Remote I/O Control
 - e. Snapshot



New features

1. DVD-backup

2. On line license

- *Easy to on line register*
Open register tool > key-in SN > active
- *Easy to on line upgrade form dongle*
Open register tool > plug-in dongle > active
- *Easy to expend license*
Open register tool > key-in another SN > active

Main improvements

1. Full Screen E-map:

- *Enlarge to full screen*

2. New User Account Authority:

- *Classify the user account options, remote timeout*

3. Handy I/O control panel:

- *Put it on the SW Interface*

4. Flexible On Screen Display warning:

- *Variable event action display*

5. Resource Management Tool

- *Real-time system monitor*

6. Execute Remote Client on non-admin OS

End

