

This document is an introduction of translating NUUO MainConsole to local language. Please follow below steps to translate.

Step:

- 1) Copy ENG folder and rename it to local language name
- 2) move to XXX folder and rename **8** xml file (XXX is Windows language name)

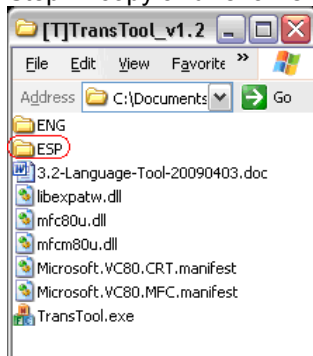
Windows Language Name	Native Name	Windows Language Name	Native Name
ARA	العربية	ITA	italiano
BGR	Български	JPN	日本語
CHT	中文(繁體)	KOR	한국어
CHS	中文(简体)	NOR	norsk
CSY	čeština	PLK	polski
DAN	dansk	PTB	Português (Brasil)
DEU	Deutsch	PTG	português (Portugal)
ELL	ελληνικά	ROM	română
ESP	español	RUS	русский
FIN	suomi	SKY	slovenčina
FRA	français	SRL	srpski (Srbija)
HEB	עברית	THA	ไทย
HRV	hrvatski	TRK	Türkçe
HUN	Magyar	FAR	فارسی

Each XXX folder should have 8 files, include:

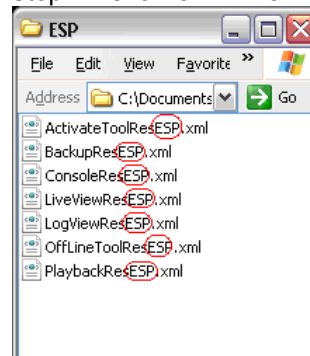
ActivateToolResXXX.xml,	backupResXXX.xml,	ConsoleResXXX.xml,
LiveViewResXXX.xml,	LogViewResXXX.xml,	OffLineToolResXXX.xml,
PlaybackResXXX.xml,	VerificationResXXX.xml	

Example: for español language

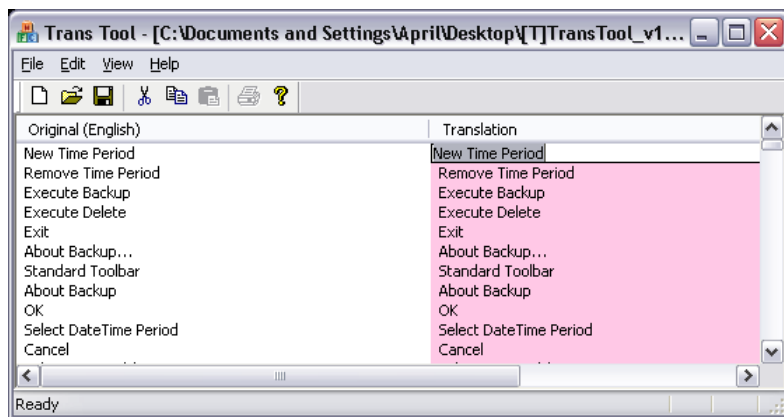
Step 1: copy and rename folder



Step 2: rename xml file



- 3) Run TransTool.exe
- 4) Open xml which you want to translate
- 5) Start translate right columnn.



Note:

- a) The translated characters should less and equal as English, it can reduce the time of modified cut error.
- b) Some characters are programming code, please keep without translating.
Such like: * , \n , *r\n , "*" , * (*) , * - * , [*] , &A , &
 , > , &