

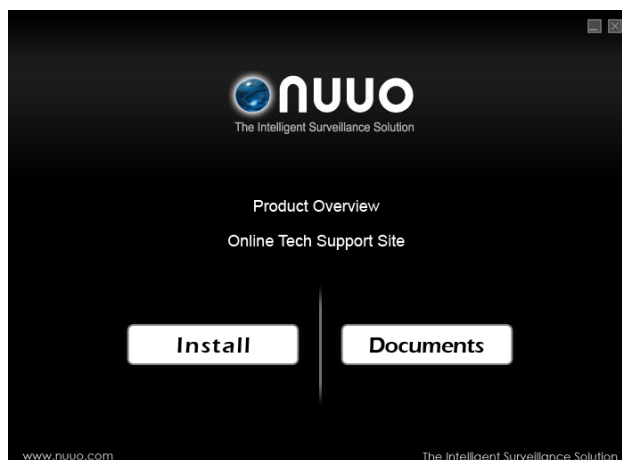


The Intelligent Surveillance Solution

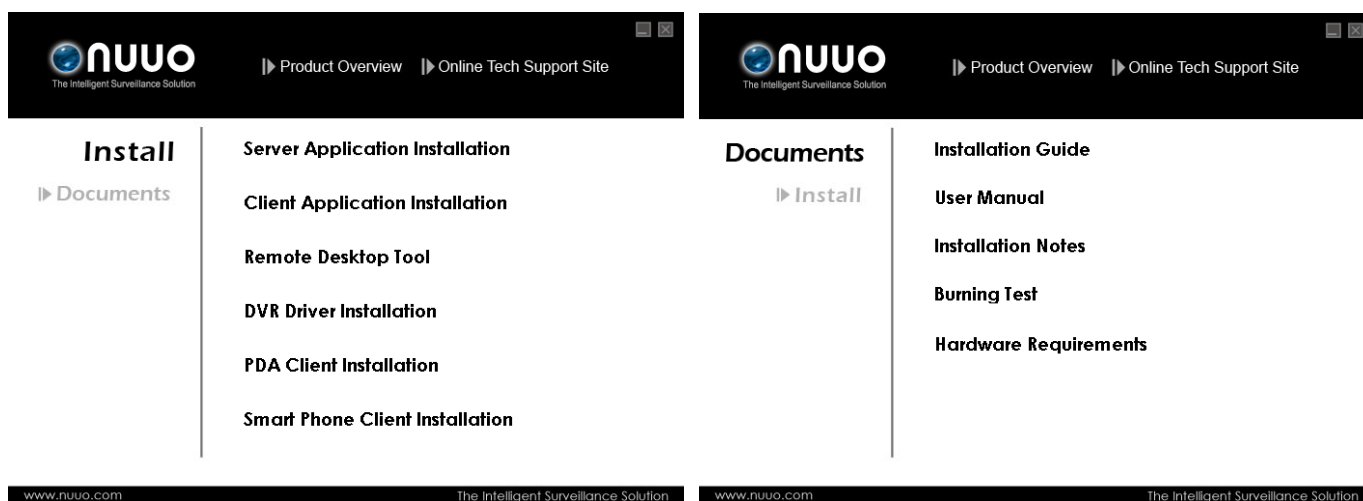
NVR/DVR/Hybrid NDVR Quick User Manual

INSTALLATION

The Installation CD contains the software you need to run the complete system. After inserting the CD, you should be able to see this window:



Click on **Product Overview** to access NUUO's official website www.nuuo.com for the latest product information. You may also visit our **Online Tech Support Site** for FAQ. Click on **Install** if you wish to start system installation immediately, or Click on **Documents** for extra info.



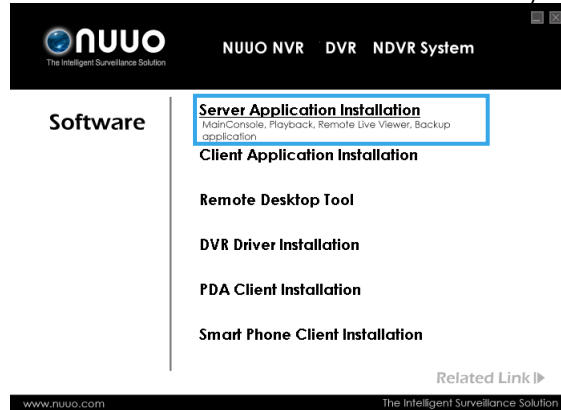
If you are installing the system on multiple PCs, install the appropriate software for each PC:

- **Server Application:** All functions of NVR/DVR/Hybrid NDVR systems including Main Console, Playback, Remote Live Viewer, Backup, and Verification Tool.
- **Client Application:** Remote functions of NVR/DVR/Hybrid NDVR systems including Playback, Remote Live Viewer, Backup, and Verification Tool.
- **Remote Desktop Tool:** The tool to access main console and setup configuration remotely.
- **DVR Driver:** The tool to detect the type of capture cards and install the proper driver automatically.
- **PDA Client:** Client application for PDA devices.
- **Smart Phone Client:** Client application for smart phone devices.
- **Related Link:** Click for more information including User Manual, Installation guide and Hardware Requirements.

The following section describes the installation of each element of the Intelligent Surveillance System.

Server Application Installation

Step 1: Insert the Installation CD. Run **autorun.exe** from the CD-ROM directly to start the installation.



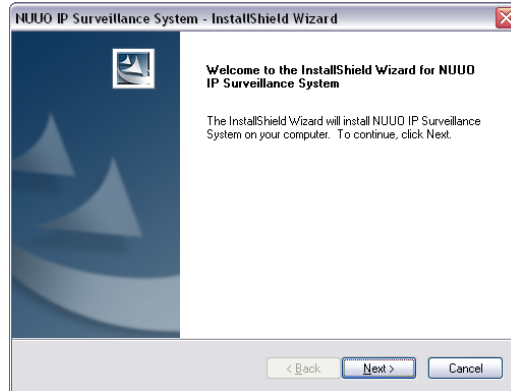
Step 2: Select **Server Application Installation**.

Step 3: There are 4 system types listed in the **System Setup Tool** window. Choose one and select **Next**.

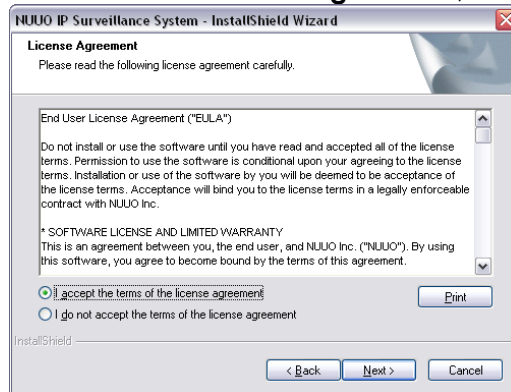
- NUUO IP Surveillance System/Trial System
- NUUO MPEG-4 Hybrid System
- NUUO H.264 Hybrid System
- NUUO Full D1H.264 Hybrid System

Note: The Setup Tool will detect the type of capture cards installed on PC and enable the system options automatically.

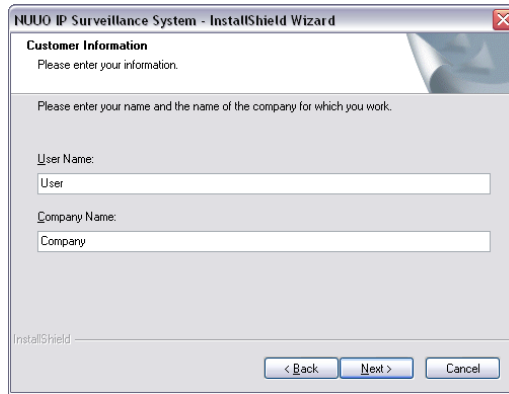
Step 4: Select Next to continue.



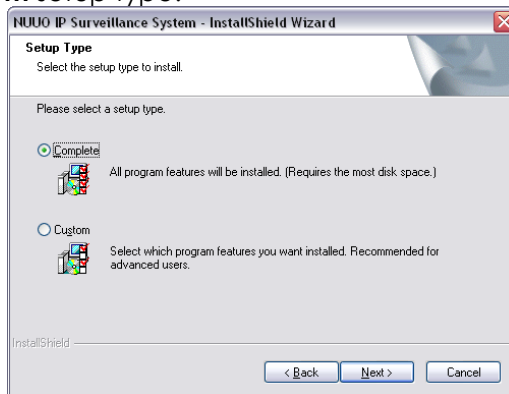
Step 5: Check the option **I accept the terms of the license agreement**, select **Next** to continue.



Step 6: Enter the appropriate information, select **Next** to continue.



Step 7: Choose **Complete** or **Custom** setup type.



COMPLETE SETUP TYPE

Installs all program features into the default directory.

Check **Complete**, and then select **Next**. All program features will be installed. [COMPLETE SETUP requires the most disk space.]

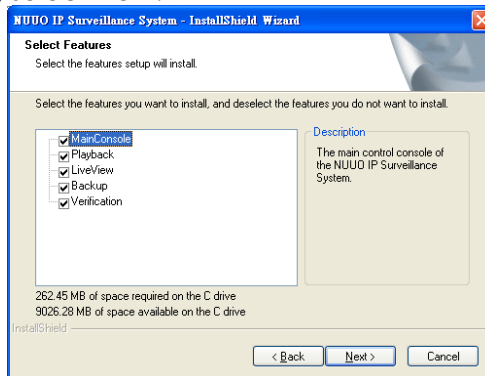
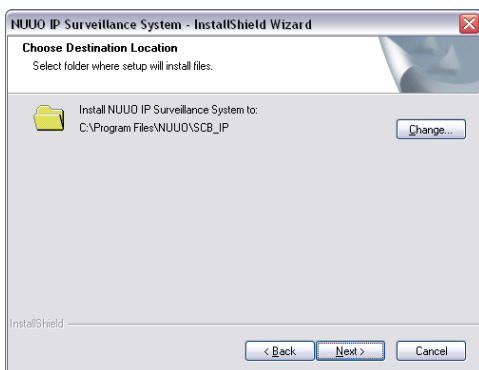
CUSTOM SETUP TYPE

Allows you to install the system to a preferred directory and select whichever program feature(s) to install. [Recommended for advanced users]

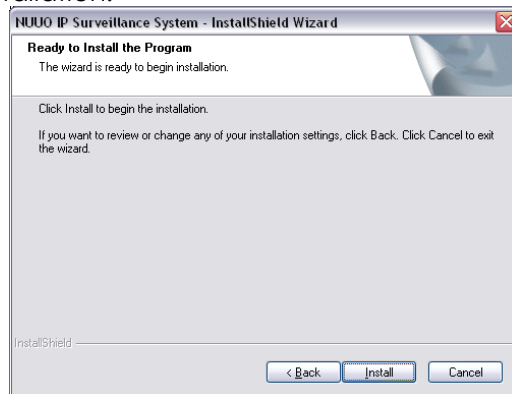
Check **Custom**, and then select **Next**.

Select **Change** if you wish to modify the installation directory.

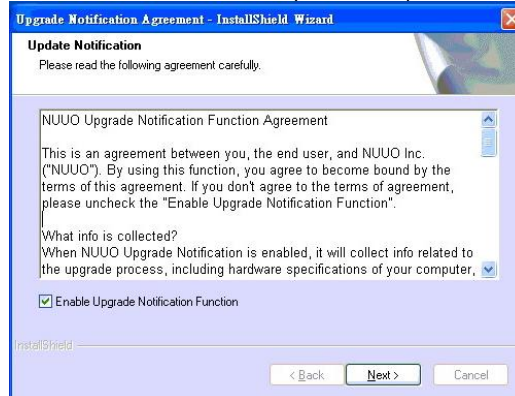
Select the feature(s) for setup to install, select **Next**.



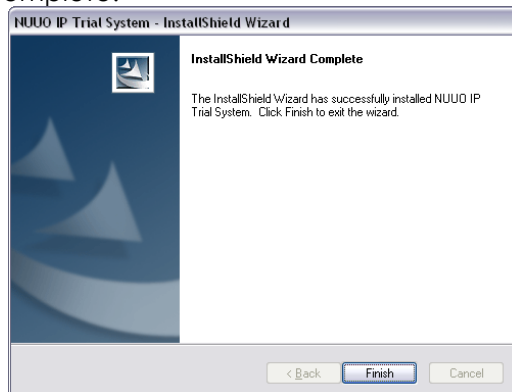
Step 8: Select **Install** to start the installation.



Step 9: Check **Enable Update Notification Function** to allow us to notify you automatically when there are software updates (Recommended). This will help keep your system up to date. The updater will also collect info from your system that will be used for future system improvements.

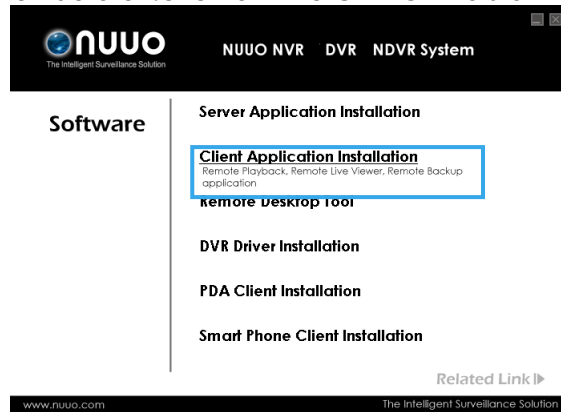


Step 10: Select **Finish**, installation complete.



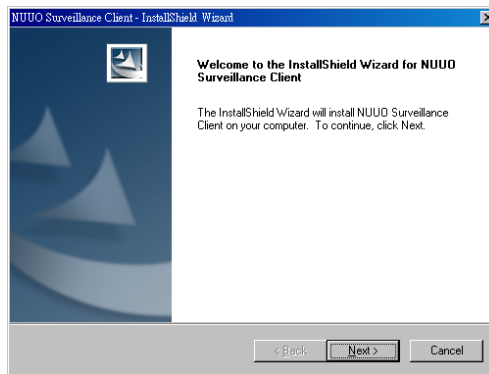
Client Application Installation

Step 1: Insert the Installation CD, run **autorun.exe** from the CD-ROM to start the installation.

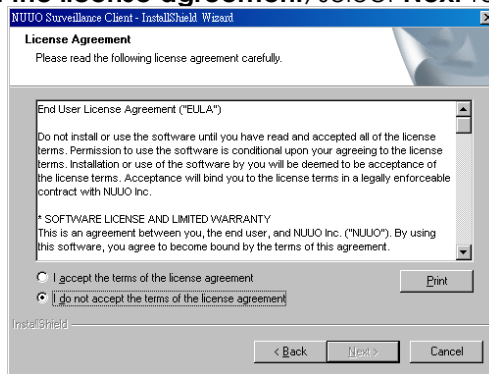


Step 2: Select **Client Application Installation**.

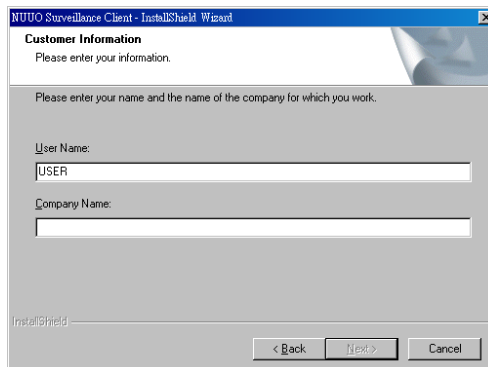
Step 3: Select **Next** to continue.



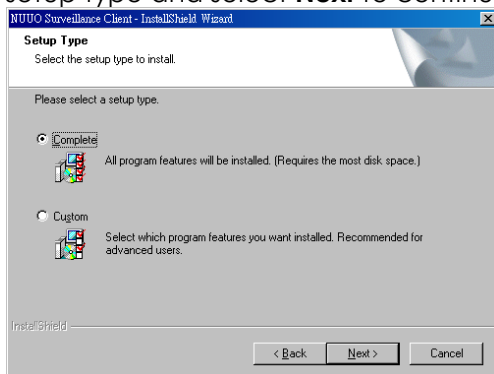
Step 4: Check **I accept the terms of the license agreement**; select **Next** to continue.



Step 5: Enter your information and select **Next** to continue.



Step 6: Select **Complete** or **Custom** setup type and select **Next** to continue.



COMPLETE SETUP TYPE

Installs all program features into the default directory.

Check **Complete**, and then select **Next**. All program features will be installed. [COMPLETE SETUP requires the most disk space.]

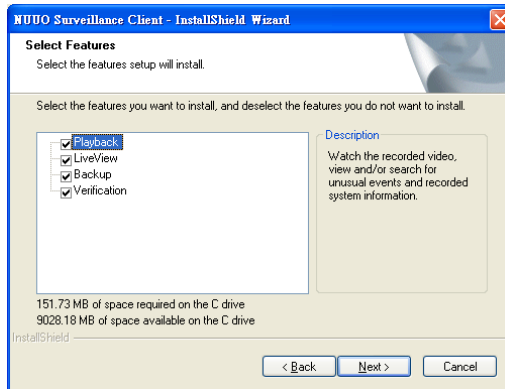
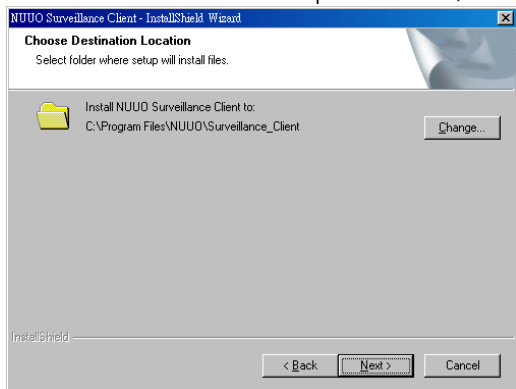
CUSTOM SETUP TYPE

Installs the system to a preferred directory and allows you to select whichever program feature(s) to install. [Recommended for advanced users]

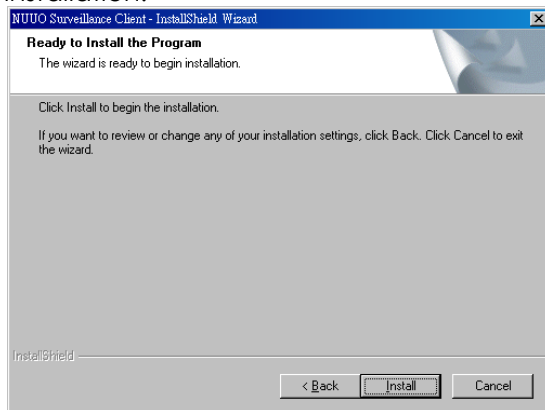
Check **Custom** option and then click **Next**.

Select **Change** to modify the installation directory where setup will install, select **Next**.

Select the features setup will install, select **Next** after confirmation.



Step 7: Select **Install** to begin the installation.

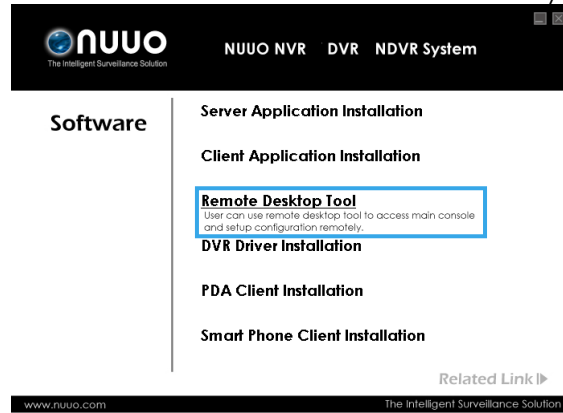


Step 8: Select **Finish** when install is complete.

Remote Desktop Tool

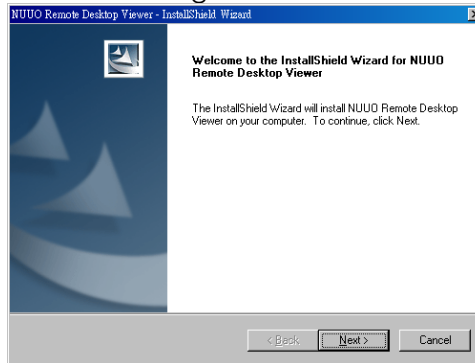
Remote Desktop Tool allow user remote to access Main Console System and setup configuration.

Step 1: Insert the Installation CD. Run **autorun.exe** from the CD-ROM directly to start the installation.

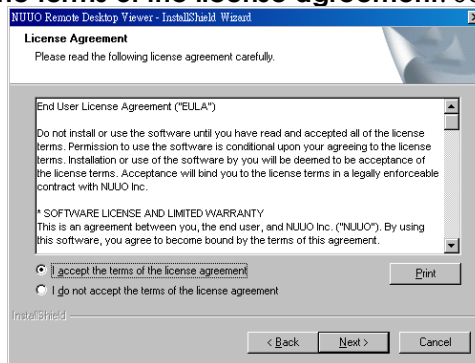


Step 2: Select **Remote Desktop Tool**.

Step 3: Select **Next** in the Install Shield Wizard dialog box.



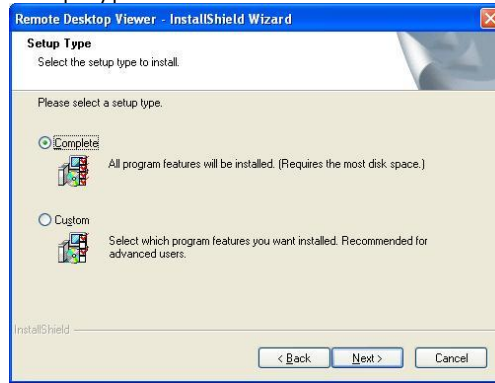
Step 4: Check the option **I accept the terms of the license agreement**. Select **Next**.



Step 5: Enter your information, select **Next**.



Step 6: Select **Complete** or **Custom** setup type.



COMPLETE SETUP TYPE

Install all program features into the default directory.

Check **Complete**, and then select **Next**. All program features will be installed. [Requires the most disk space.]

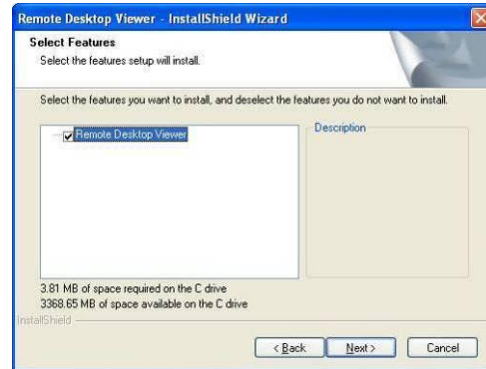
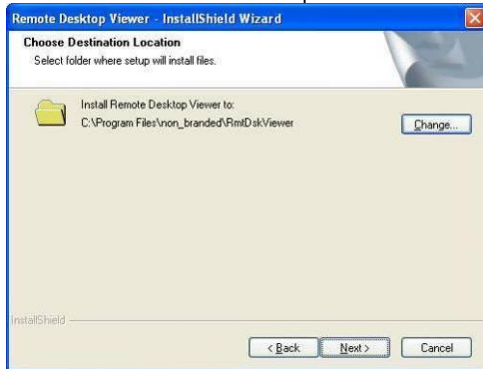
CUSTOM SETUP TYPE

Install the system to a preferred directory. Select program feature(s) to install. [Recommended for advanced users]

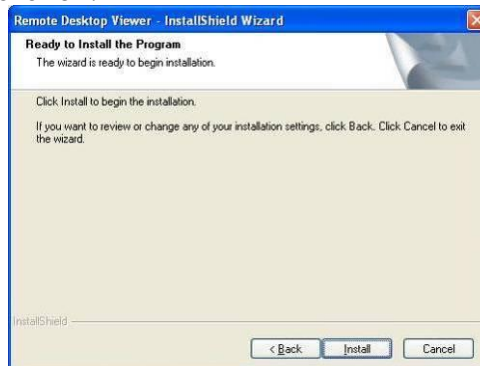
Check the option **Custom**, select **Next**.

Select **Change** to select folder setup will install files.

Select the features setup will install.



Step 7: Select **Install** to start the installation.

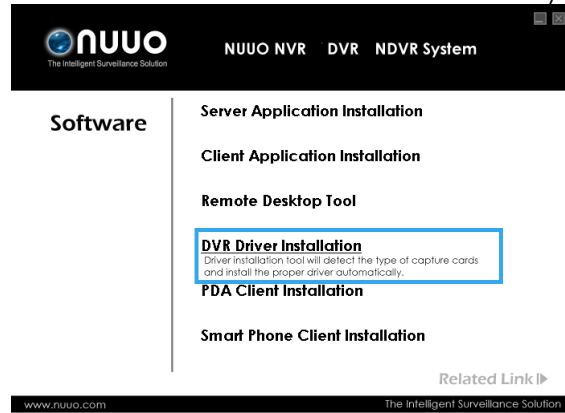


Step 8: Select **Finish** after installing the system completely.

DVR Driver Installation

Driver Install Tool help user to auto detect type of capture card and install corresponding drivers.

Step 1: Insert the Installation CD. Run **autorun.exe** from the CD-ROM directly to start the installation.

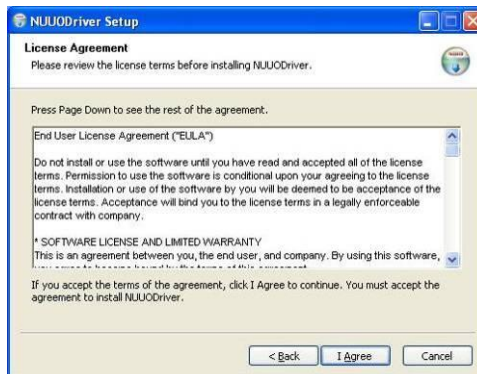


Step 2: Select **DVR Driver Installation**.

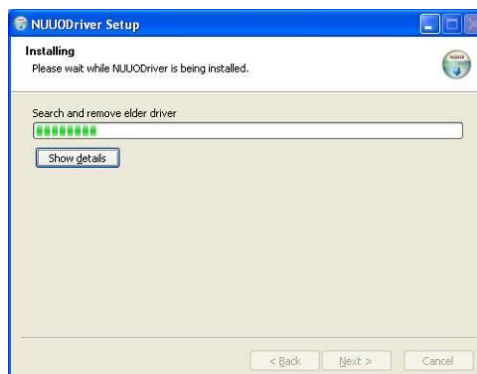
Step 3: In the NUUO Driver Setup dialog box, select **Next**.



Step 4: Check **I Agree** to continue.



Step 5: Installing NUUO driver.



Step 6: Click **Finish** after installing the system completely, and then choose to reboot now or later.

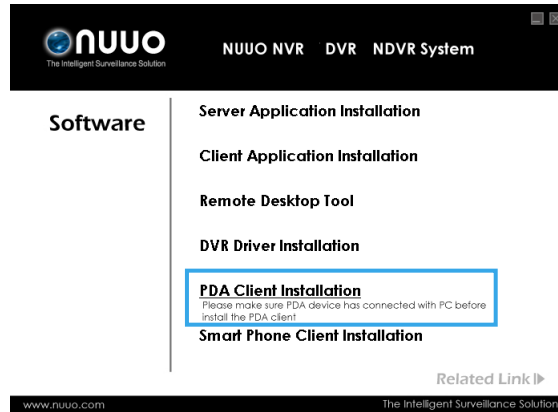


PDA Client Installation

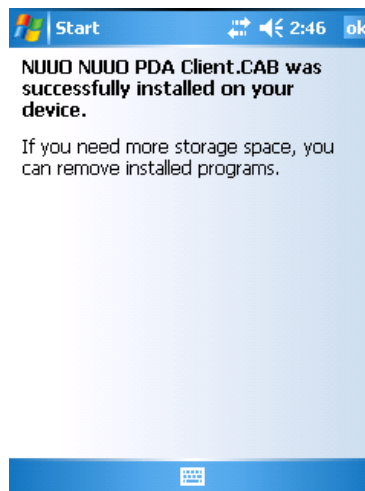
Step 1: Connect PDA device to the PC.

Step 2: Insert the installation CD, click **PDA Client Installation** to automatically install the client application in device.

Note: If you do not have Microsoft® ActiveSync installed, a message will appear “Cannot find ActiveSync, install ActiveSync and run installation again”.



Step 3: Check that the client application is installed completely in PDA device.

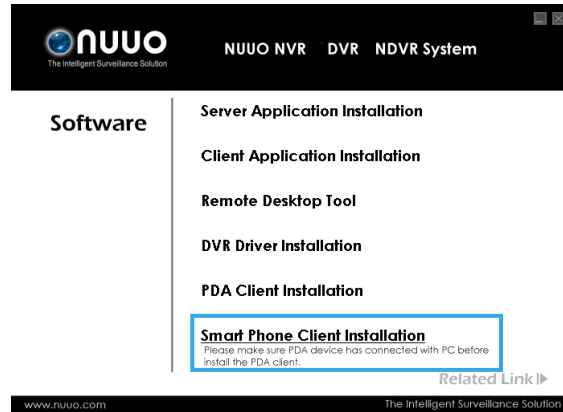


Smart Phone Client Installation

Step 1: Connect Smart Phone device to the PC.

Step 2: Insert the installation CD, click **Smart Phone Client Installation** to automatically install the client application in device.

Note: If you do not have Microsoft® ActiveSync installed, a message will appear "Cannot find ActiveSync. Please reinstall ActiveSync and then run this installation again."



Step 3: Check the client application is installed completely in smart phone device.

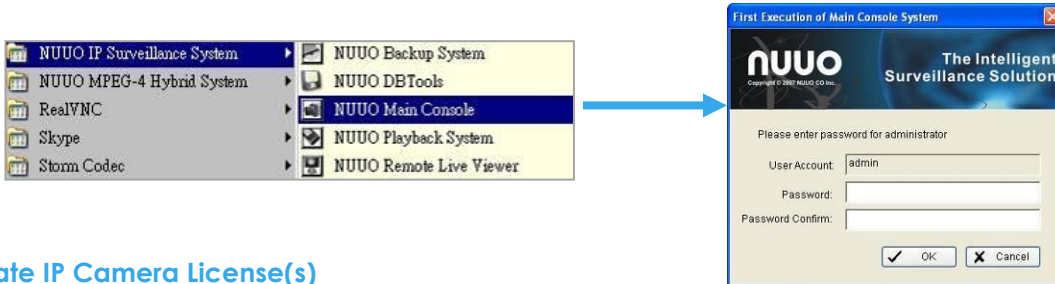


Quick Start

Execute Main Console

Step 1: Go to **Start > All Programs > NUUO Surveillance System > NUUO Main Console** to execute Main Console.

Step 2: Enter your own password into the edit box, enter it again for double confirm and then click on **OK**.



Activate IP Camera License(s)

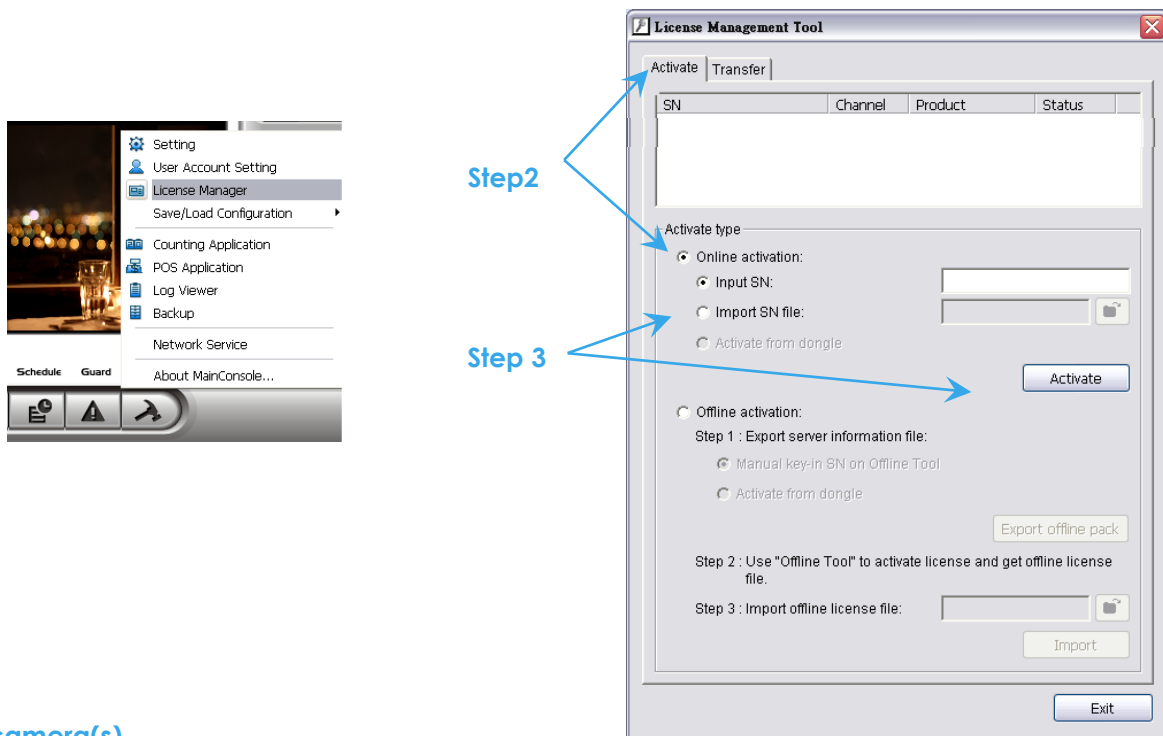
Step 1: Open License Manager Tool in **Config** menu.

Step 2: Select **Activate** tab, check the PC in **Online** network environment.

Step 3: Insert the SN, SN file or dongle to activate license.

Step 4: After software license is activated successfully, please restart Main Console.

Note: Please refer to page 錯誤! 尚未定義書籤 for advanced settings.



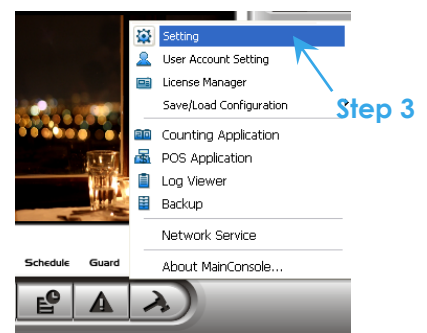
Install IP camera(s)

Step 1: Setup the IP camera(s) by referring to the user manual provided by the IP camera manufacturer.

Step 2: Make sure you can access this camera through IE browser.

Step 3: Add the IP camera(s) to the system by following the steps below.

Add IP camera(s)



Step 1: Execute Main Console.

Step 2: Type in user name and password and log in to the system.

Step 3: In Main Console, go to **Config** and select **Setting** to obtain the Setting panel.

Step 4: Go to **Camera** tab.

Note: If the IP camera supports UPnP, follow step 5. Otherwise, follow step 8.

Step 5: Click on **Search** to detect IP cameras under this local area network (LAN).

Note: The Search function is available only when the IP cameras support **UPnP**.

Step 6: Select one of the IP cameras that are available and enter the username and password.

Step 7: Click **OK** to add the camera.

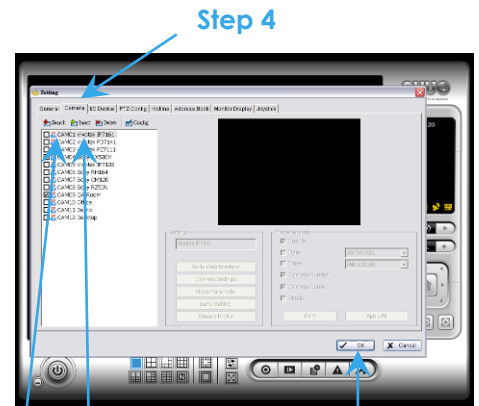
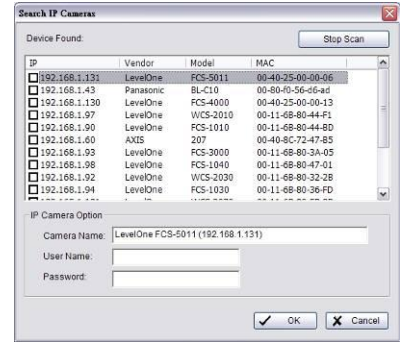
Step 8: Click **Insert** to insert the IP cameras.

Step 9: Enter the IP address or domain name (check the **Use DNS** option), Http Port, Username, and Password.

Step 10: Select **Auto Detect**.

Step 11: Select **OK** to add the camera.

Step 12: Select **OK** to exit.



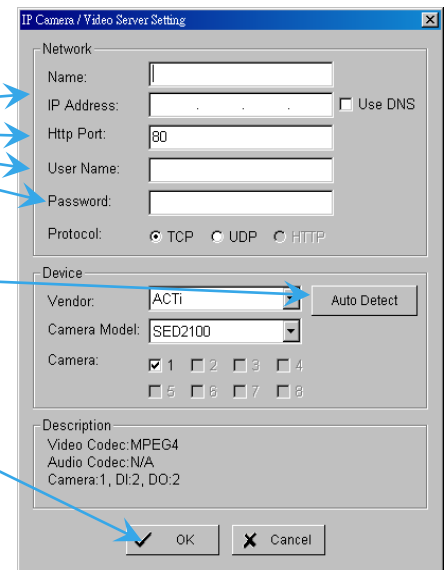
Step 5 Step 8

Step 12

Step 9

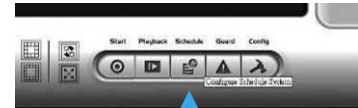
Step 10

Step 11

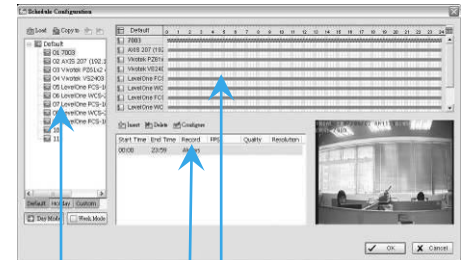


Set Schedule

- Step 1:** Execute Main Console.
- Step 2:** Type in user name and password.
- Step 3:** Select **Schedule**.
- Step 4:** The default schedule is "always record" when a camera is newly inserted.
- Step 5:** Choose a camera and then select **Configure** or just double click on the schedule bar to modify the recording mode.
- Step 6:** Select **OK** to update the recording schedule.
- Step 7:** Select **OK** to go back to Main Console.



Step 3



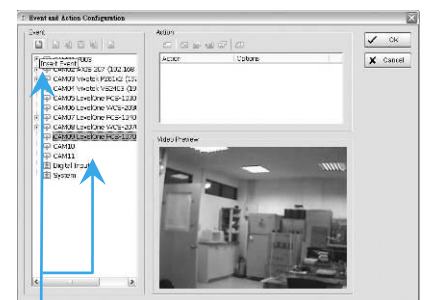
Step 4 Step 5

Set Smart Guard

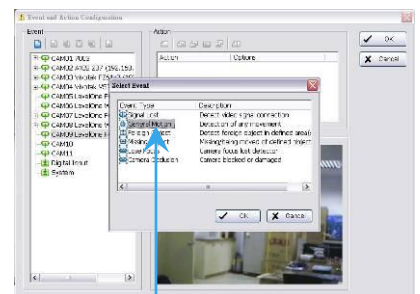
- Step 1:** Execute Main Console.
- Step 2:** Type in user name and password and log in the system.
- Step 3:** Click on **Guard**.
- Step 4:** Select a camera and then click on **Insert Event**.
- Step 5:** Take "General Motion" for example, select **General Motion** as the event type and then click on **OK**.
- Step 6:** In **Alarm Event Configuration** panel, define your own detection zone, sensitivity and interval. After that, click on **OK** to save the configuration.
- Step 7:** Click **OK** to go back to Main Console.



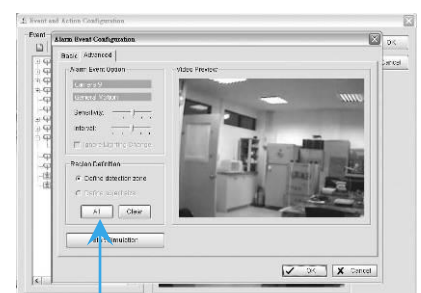
Step 3



Step 4



Step 5



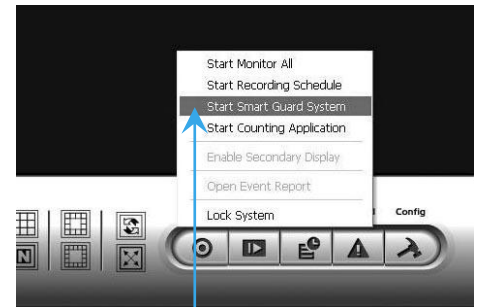
Step 6

Start Recording & Smart Guard

- Step 1:** Execute Main Console.
- Step 2:** Type in user name and password and log in the system.
- Step 3:** Click on **Start**.
- Step 4:** Click on **Start Recording Schedule** and **Start Smart Guard System** to enable the two functions.



Step 3



Step 4

Playback

- Step 1:** Execute Main Console.
- Step 2:** Type in user name and password and log in the system.
- Step 3:** Click on **Playback**.
- Step 4:** In Playback, click on **Date Time Search Dialog**.
- Step 5:** Select a specific day from the calendar, left click on mouse and drag to select a video clip to replay; user can also select multiple channels to replay at the same time.
- Step 6:** The recorded files are now ready to view.



Step 3



Step 4