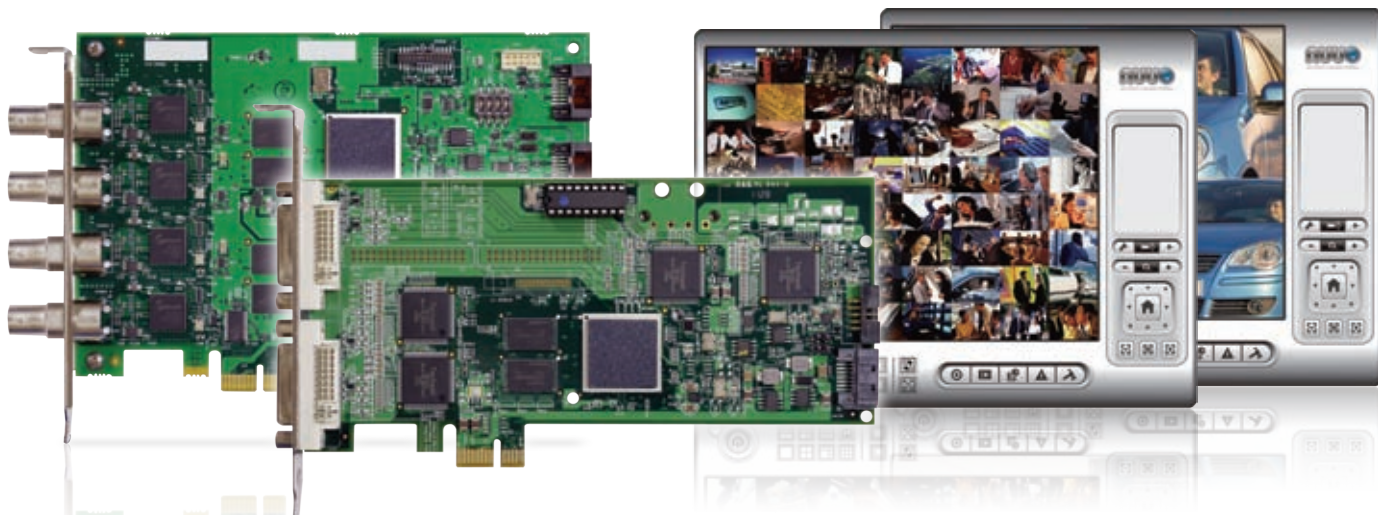


# 64CH Tribrid DVR

For IP, Analog and HD-SDI Camera

H.264 64CH D1 Real-time Recording • 1080p Real-time Recording



Multi-View & Digital PTZ



Stream Profile & Transcoding



AUTO



SMART



LPR



Access Control



Boosting Recording\*



Privacy Mask\*



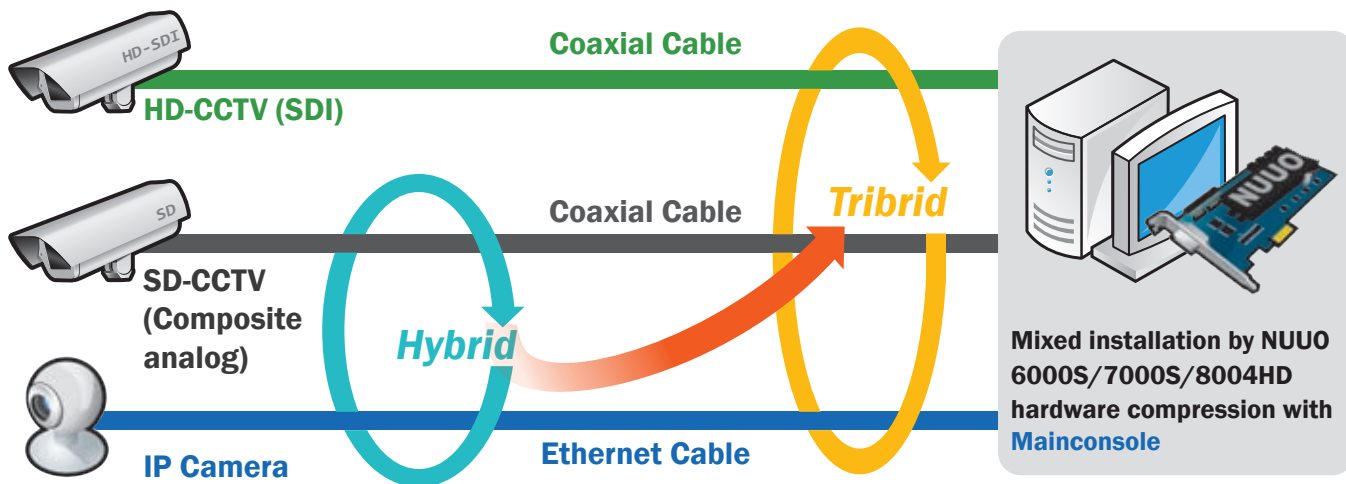
Windows Active Directory\*



Auto Back-up\*

- Stackable Up to 64 Channels
- Support Instant Playback
- Up to 128 CH Remote Live View
- Support Triple Monitors
- Supported by NUUO CMS
- PCI/PCI-Express Interface
- Support 30 language
- Support iPhone
- Support POS
- Support Transcode

## Upgrade to HD-CCTV



	D1	→	HD
<b>Resolution</b>	1	:	6
<b>Bitrate</b>	1	:	4

- H.264 full HD encode
- 100% plug and play
- Near 0 latency
- Good efficiency of resolution over bitrate

\* The maximum number of camera connections depends on the server's hardware configuration and the total bit rate of the IP cameras. Please check NUUO Calculator on <http://support.nuuo.com/calculator/>



\* Merging IP , composite analog , SDI interface video source into one mainconsole server to support NVR/DVR/NDVR/Hybrid/Tribrid DVR various customer's requirements.

## Main Features

- Support auto backup
- POS , I/O device , LPR and access control integration
- Windows Active Directory
- Privacy Mask
- Boosting recording
- On the edge motion integration
- E-map
- Instant playback
- 2-way audio
- Unique GUI recording schedule
- Digital PTZ and multi-view
- Smart detection of 6 events with 10 instant responses
- Human counting application
- Intelligent playback system with video analytics searches
- Support digital watermark

## Camera Support



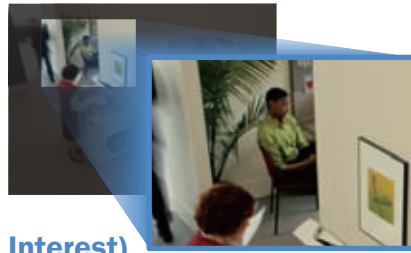
## 3<sup>rd</sup> Party Integration

Access Control			LPR	POS
SOFTWARE HOUSE A Tyco International Company				

## Design Highlights

### Stream relaying & transcoding , to be a powerful media hub

With stream relay service [Mainconsole](#) can duplicate ROI image by the same stream input. User can watch the camera by 2 viewing zone separately.



ROI (Region Of Interest)

Screen 2



Screen 1

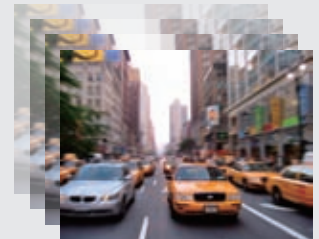
### Boosting record , to save your storage

Enable boosting mode to record normal frame rate in regular time and enhance to higher frame rate when event occurs.



Normal: 1 fps

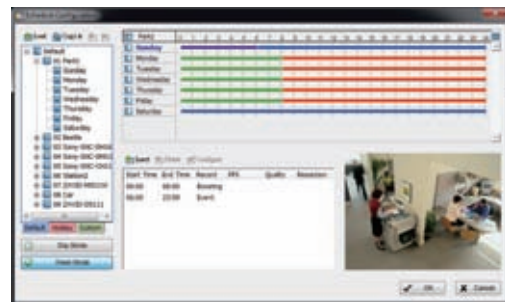
VS.



Boosting recording: 30 fps when the event trigger

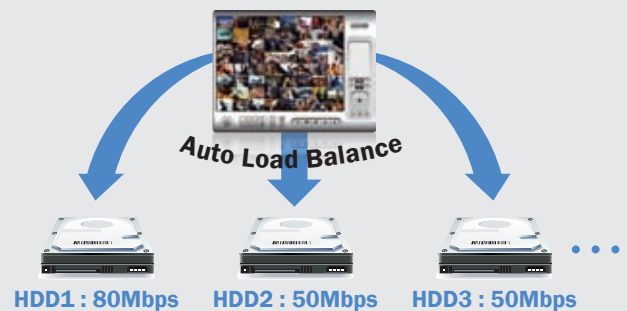
### GUI recording schedule , easy , quick and clear

Support weekly , daily schedule and 6 kinds of scenario recording mode with GUI time slot dragging setting. The parameter can be quickly copied to independent or all cameras.



### Auto load balance and backup to enhance efficiency and data safety

Auto load balance feature supports multiple hard drives and enhance the data writing efficiency. Backup to any kinds of network drives, including NAS, SAN, iSCSI, DAS.



## Success Stories

Industrial



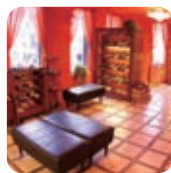
LG Powercom  
356CH (Korea)

Hostpital



El Zerayeen Hospital  
560CH (Egypt)

Retail



Macanna Inc.  
400CH (Taiwan)

Education



Fujian Exam Center  
18,000CH (China)

Transportation



RapidKL  
670CH (Malaysia)

Government



TRE Parana  
970CH (Brazil)

Hotel



Cristal Hotel  
100CH (USA)


## IP NVR

IP+ Series	SCB-IP+04	SCB-IP+08	SCB-IP+12	SCB-IP+16	SCB-IP+25	SCB-IP+32	SCB-IP+36	SCB-IP+64
Max of Cameras	4	8	12	16	25	32	36	64*



\* The maximum number of camera connections depends on the server's hardware configuration and the total bit rate of the IP cameras.  
Please check NUUO Calculator on <http://support.nuuo.com/calculator/>

## DVR Card




### HD SDI H.264 Hardware Compression Capture Card SCB 8000 Series

Product Name	SCB-8004HD
Video Inputs	4
Max Cards Installation	2 (can be with 6000S/7000S series for more channels)
Display Rate	120fps @ 1080p
Recording Rate	120fps @ 1080p
Video Resolution	1080p, 720p
Dimension	178x126
Product Image	




### H.264 Hardware Compression Capture Card SCB 7100 Series

Product Name	SCB-7108	SCB-7116
Video Inputs	8	16
Audio Inputs	8	16
Max. Cards Installation	1 (can be with 6000/6000S/7000/7000S series for more channels)	
Display Rate (NTSC/PAL)	240fps / 200fps	480fps / 400fps
Recording Rate [D1] (NTSC/PAL)	240fps / 200fps @ D1 resolution	480fps / 400fps @ D1 resolution
TV Output Rate	25fps (only RCA), 14fps (only Digital Port), 10fps (RCA & Digital Port)	
TV Output	RCA connector x2, Digital Port connector x1	
Video Resolution	NTSC : 176 x120, 352 x 240, 704 x 480, PAL : 176 x 144, 352 x 288, 704 x 576	
Dimensions (W x H mm)	216 x 126	
Product Image		

### H.264 Hardware Compression Capture Card SCB 7000S Series

Product Name	SCB-7004S	SCB-7008S	SCB-7016S
Video Inputs	4	8	16
Audio Inputs	4	8	16
Max. Cards Installation	4	4	4
Display Rate (NTSC/PAL)	120fps / 100fps	240fps / 200fps	480fps / 400fps
Recording Rate [D1] (NTSC/PAL)	120fps / 100fps @ D1 resolution	240fps / 200fps @ D1 resolution	480fps / 400fps @ D1 resolution
Video Resolution	NTSC : 176 x120, 352 x 240, 704 x 480, PAL : 176 x 144, 352 x 288, 704 x 576		
Dimensions (W x H mm)	188 x 121		
Product Image			

### H.264 Hardware Compression Capture Card SCB 6000S Series

Product Name	SCB-6004S	SCB-6008S	SCB-6016S
Video Inputs	4	8	16
Audio Inputs	4	8	16
Max. Cards Installation	4	4	4
Display Rate (NTSC/PAL)	120fps / 100fps	240fps / 200fps	480fps / 400fps
Recording Rate [CIF] (NTSC/PAL)	120fps / 100fps	240fps / 200fps	480fps / 400fps
Recording Rate [D1] (NTSC/PAL)	30fps / 25fps @ D1 resolution	60fps / 50fps @ D1 resolution	120fps / 100fps @ D1 resolution
Video Resolution	NTSC : 176 x120, 352 x 240, 704 x 480, PAL: 176 x 144, 352 x 288, 704 x 576		
Dimensions (W x H mm)	188 x 121		
Product Image			

### H.264 & MPEG4 Software Compression Capture Card SCB 3000 / 1000 Series

Product Name	SCB-3004	SCB-3008	SCB-3016	SCB-1004	SCB-1008
Video Inputs	4	8	16	4	8
Audio Inputs	4	4	4	1	1
Max. Cards Installation	2	2	2	4	4
Display Rate (NTSC/PAL)	120fps / 100fps			30fps / 25fps	
Recording Rate [CIF] (NTSC/PAL)	120fps / 100fps			30fps / 25fps	
Video Resolution	NTSC : 352 x 240, 640 x 480, 704 x 480, PAL : 352 x 288, 640 x 576, 704 x 576				
Dimensions (W x H mm)	200 x 120			155 x 120	
Product Image	