



# CE APPLICATION FOR LVD

On Behalf of  
**NUUO Inc.**

Prepared For:	<b>NUUO Inc.</b>
	B1, No. 207-1, Sec. 3, Beixin Rd., Xindian Dist., New Taipei City 231, Taiwan
Product Name:	<b>Network Video Recorder</b>
Trademark:	<b>NUUO</b>
Model:	<b>NC-2xx0P NVC-2xx0P (xx=00,02,04,06,08,10,12,14,16)</b>
Prepared By:	<b>Shenzhen BCTC Technology Co., Ltd.</b>
	NO.101, Yousong Road, Longhua New District, Shenzhen, Guangdong P.R.China
Test Date:	<b>Oct. 29 - Nov. 05, 2015</b>
Date of Report:	<b>Nov. 05, 2015</b>
Report No.:	<b>BCTC-151013419</b>



<b>TEST REPORT</b> <b>EN60950-1</b> <b>Information technology equipment – Safety –</b> <b>Part 1: General requirements</b>	
Report Reference No.....	<b>BCTC-151013419</b>
Date of issue .....	<b>Nov. 05, 2015</b>
Testing Laboratory .....	<b>Shenzhen BCTC Technology Co., Ltd.</b>
Address .....	NO.101, Yousong Road, Longhua New District, Shenzhen, Guangdong P.R.China
Applicant's name.....	<b>NUUO Inc.</b>
Address .....	B1, No. 207-1, Sec. 3, Beixin Rd., Xindian Dist., New Taipei City 231, Taiwan
Test specification:	
Standard .....	EN60950-1:2006+A11:2009+A1:2010+A12:2011+A2:2013
Test procedure.....	LVD
Non-standard test method.....:	N/A
Test Report Form No.....	IECEN60950_1C
Master TRF .....	Dated 2007-06
<p>Copyright © 2007 IEC System for Conformity Testing and Certification of Electrical Equipment (IECEE), Geneva, Switzerland. All rights reserved.</p> <p>This publication may be reproduced in whole or in part for non-commercial purposes as long as the IECEE is acknowledged as copyright owner and source of the material. IECEE takes no responsibility for and will not assume liability for damages resulting from the reader's interpretation of the reproduced material due to its placement and context.</p> <p>If this Test Report Form is used by non-IECEE members, the IECEE/IEC logo shall be removed.</p> <p>This report is not valid as a CB Test Report unless signed by an approved CB Testing Laboratory and appended to a CB Test Certificate issued by an NCB in accordance with IECEE 02.</p>	



Name and address of the testing laboratory: **Shenzhen BCTC Technology Co., Ltd.**

NO.101, Yousong Road, Longhua New District, Shenzhen,  
Guangdong P.R.China

Date of Test:

**Oct. 29 - Nov. 05, 2015**

Prepared by(Engineer):

*Sabrina Liang*

Reviewer(Quality Manager):

*Daisy Zheng*

Approved&Authorized Signer(Manager):

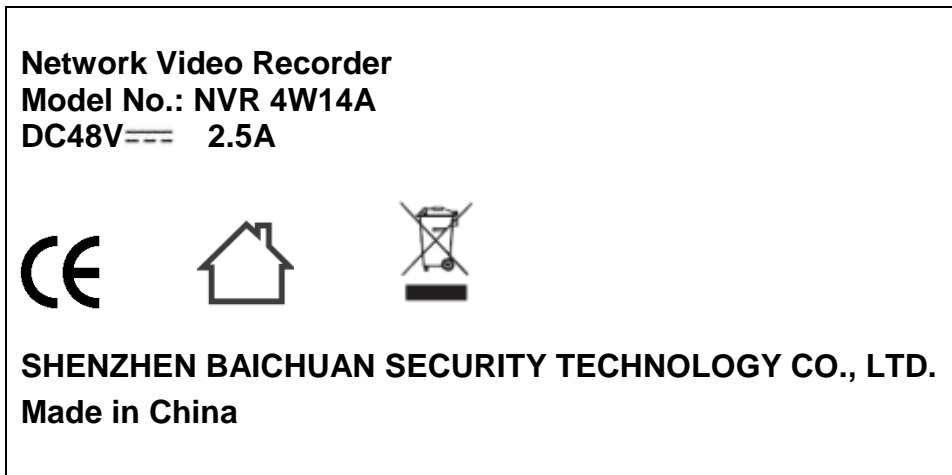
*Casey Wang*





Test item description.....: **Network Video Recorder**  
Trade Mark.....: **NUUO**  
Manufacturer.....: **SHENZHEN BAICHUAN SECURITY TECHNOLOGY CO., LTD.**  
5th Floor, Building 7, Tangtou 3rd Industrial Area, Shiyan Town, Bao'an District, Shenzhen City, China  
Model/Type reference.....: **NC-2xx0P**  
Ratings.....: **Main unit: DC48V<sup>==</sup> 2.5A**  
**External adaptor: Input: 100-240VAC~ 50/60Hz 2.0A max**  
**Output: DC48V<sup>==</sup> 2.5A**

**Artwork of marking plate(representation):**



**Summary of testing:**

The sample(s) tested complies with the requirements of EN60950-1:2006+A11:2009+A1:2010+A12:2011+A2:2013.

**Test item particulars** .....

Equipment mobility .....  movable [ ] hand-held  transportable  
[ ] stationary [ ] for building-in [ ] direct plug-in

Connection to the mains .....  pluggable equipment [ ] type A [ ] type B  
[ ] permanent connection  
[ ] detachable power supply cord  
[ ] non-detachable power supply cord  
 not directly connected to the mains

Operating condition .....  continuous  
[ ] rated operating / resting time:

Access location .....  operator accessible  
[ ] restricted access location

Over voltage category (OVC) .....  OVC I [ ] OVC II [ ] OVC III  
[ ] OVC IV [ ] other:

Mains supply tolerance (%) or absolute mains supply values ..... Not connected to mains directly

Tested for IT power systems ..... [ ] Yes [ X ] No

IT testing, phase-phase voltage (V) ..... N/A

Class of equipment ..... [ ] Class I [ ] Class II  Class III  
[ ] Not classified

Pollution degree (PD) ..... [ ] PD 1 [ X ] PD 2 [ ] PD 3

IP protection class ..... IPX0

Mass of equipment (kg) ..... Approx.3.235kg

**Possible test case verdicts:**

- test case does not apply to the test object..... N (N/A)
- test object does meet the requirement ..... P (Pass)
- test object does not meet the requirement ..... F (Fail)

**General remarks:**

The test results presented in this report relate only to the object tested.

This report shall not be reproduced, except in full, without the written approval of the Issuing testing laboratory.

"(See Enclosure #)" refers to additional information appended to the report.

"(See appended table)" refers to a table appended to the report.

When determining for test conclusion, measurement uncertainty of tests has been considered.

The test report only allows to be revised only within the report defined retention period unless standard or regulation was withdrawn or invalid.

The test sample(s) was(were) provided by client.

The clause which indicated with \* is the subcontract test item. (if there is subcontracting test)

Note: This TRF includes EN Group Differences together with National Differences and Special National Conditions, if any. All Differences are located in the Appendix to the main body of this TRF.

Throughout this report a comma is used as the decimal separator.

**General product information:**

The equipment is a Network Video Recorder for general use with information technology equipment.



EN 60950-1			
Clause	Requirement	Remark	Result
1	GENERAL		P

1.5	Components		P
1.5.1	General	Complies	P
	Comply with IEC 60950-1 or relevant component standard	(see appended table 1.5.1)	P
1.5.2	Evaluation and testing of components	Components which are certified to IEC and/or national standards are used correctly within their ratings. Components not covered by IEC standards are tested under the conditions present in the equipment.	P
1.5.3	Thermal controls	No thermal controls.	N
1.5.4	Transformers		N
1.5.5	Interconnecting cables		N
1.5.6	Capacitors bridging insulation	Not used	N
1.5.7	Resistors bridging insulation	No such resistors	N
1.5.7.1	Resistors bridging functional, basic or supplementary insulation		N
1.5.7.2	Resistors bridging double or reinforced insulation between a.c. mains and other circuits	No resistors bridging double or reinforced insulation between a.c mains and other circuits.	N
1.5.7.3	Resistors bridging double or reinforced insulation between a.c. mains and antenna or coaxial cable	No resistors bridging double or reinforced insulation between a.c mains and antenna or coaxial cable.	N
1.5.8	Components in equipment for IT power systems	Not connected to mains directly	N
1.5.9	Surge suppressors	See below	N
1.5.9.1	General		N



EN 60950-1			
Clause	Requirement	Remark	Result
1.5.9.2	Protection of VDRs		N
1.5.9.3	Bridging of functional insulation by a VDR		N
1.5.9.4	Bridging of basic insulation by a VDR		N
1.5.9.5	Bridging of supplementary, double or reinforced insulation by a VDR		N

1.6	Power interface		P
1.6.1	AC power distribution systems		N
1.6.2	Input current		P
1.6.3	Voltage limit of hand-held equipment		N
1.6.4	Neutral conductor		N

1.7	Marking and instructions		P
1.7.1	Power rating	Complies	P
	Rated voltage(s) or voltage range(s) (V) .....	See the marking label	P
	Symbol for nature of supply, for d.c. only .....		N
	Rated frequency or rated frequency range (Hz) ...	See the marking label	P
	Rated current (mA or A) .....	See the marking label	P
	Manufacturer's name or trade-mark or identification mark .....	See the marking label	P
	Model identification or type reference .....	Refer to cover page of test report	P
	Symbol for Class II equipment only .....		N
	Other markings and symbols .....	The additional marking does not give rise to misunderstandings.	P
1.7.2	Safety instructions and marking	Safety instructions in English. Other languages will be provided when submitted for national approval.	P
1.7.2.1	General	Instructions are available.	P





EN 60950-1			
Clause	Requirement	Remark	Result
1.7.2.2	Disconnect devices		P
1.7.2.3	Overcurrent protective device	Not type B pluggable equipment or permanently connected equipment.	N
1.7.2.4	IT power distribution systems		N
1.7.2.5	Operator access with a tool	No such an area specifically defined by the client	N
1.7.2.6	Ozone	The equipment does not produce Ozone.	N
1.7.3	Short duty cycles	The equipment is intended for continuous operation.	N
1.7.4	Supply voltage adjustment .....	No voltage selector.	N
	Methods and means of adjustment; reference to installation instructions .....		N
1.7.5	Power outlets on the equipment .....	No standard power outlet.	N
1.7.6	Fuse identification (marking, special fusing characteristics, cross-reference) .....		N
1.7.7	Wiring terminals	Refer below:	N
1.7.7.1	Protective earthing and bonding terminals .....	Class III equipment.	N
1.7.7.2	Terminals for a.c. mains supply conductors	The equipment is not permanently connected or provided with a non detachable power supply cord.	N
1.7.7.3	Terminals for d.c. mains supply conductors	The equipment is not supplied from d.c mains.	N
1.7.8	Controls and indicators	Refer below	P
1.7.8.1	Identification, location and marking .....		P
1.7.8.2	Colours .....		P
1.7.8.3	Symbols according to IEC 60417 .....		P
1.7.8.4	Markings using figures .....		P



EN 60950-1			
Clause	Requirement	Remark	Result
1.7.9	Isolation of multiple power sources .....	Only one connection supplying hazardous voltages and energy levels to the equipment.	N
1.7.10	Thermostats and other regulating devices .....	No thermostats or other regulating devices.	N
1.7.11	Durability	The marking withstands required tests.	P
1.7.12	Removable parts	No such removable parts	N
1.7.13	Replaceable batteries .....	No replaceable batteries in the equipment.	N
	Language(s) .....		—
1.7.14	Equipment for restricted access locations .....	Not for installation in restricted access locations	N

2	PROTECTION FROM HAZARDS		P
2.1	Protection from electric shock and energy hazards		P
2.1.1.1	Access to energized parts	See below	P
	Test by inspection .....		P
	Test with test finger (Figure 2A) .....		P
	Test with test pin (Figure 2B) .....		P
	Test with test probe (Figure 2C) .....	No TNV circuit.	N
2.1.1.2	Battery compartments		N
2.1.1.3	Access to ELV wiring	No internal wiring at ELV accessible to the operator.	N
	Working voltage ( $V_{peak}$ or $V_{rms}$ ); minimum distance through insulation (mm)		—
2.1.1.4	Access to hazardous voltage circuit wiring	No hazardous voltage wiring in operator accessible area	N



EN 60950-1			
Clause	Requirement	Remark	Result
2.1.1.5	Energy hazards .....	The energy does not exceed 240VA between any two points in accessible connector of secondary circuit	P
2.1.1.6	Manual controls		N
2.1.1.7	Discharge of capacitors in equipment		N
	Measured voltage (V); time-constant (s)..... :		—
2.1.1.8	Energy hazards – d.c. mains supply	Not connected to DC mains supply.	N
	a) Capacitor connected to the d.c. mains supply . :		N
	b) Internal battery connected to the d.c. mains supply .....		N
2.1.1.9	Audio amplifiers .....		N
2.1.2	Protection in service access areas	No service access area	N
2.1.3	Protection in restricted access locations	Equipment not intended for installation in RAL.	N

2.2	SELV circuits		P
2.2.1	General requirements	The secondary circuits were tested as SELV. See 2.2.1 to 2.2.4.	P
2.2.2	Voltages under normal conditions (V) .....	Within SELV limits.	P
2.2.3	Voltages under fault conditions (V) .....	Within SELV limits.	P
2.2.4	Connection of SELV circuits to other circuits .....	SELV circuits are only connected to other SELV circuits.	P

2.3	TNV circuits		N
2.3.1	Limits		N
	Type of TNV circuits..... :		—
2.3.2	Separation from other circuits and from accessible parts		N



EN 60950-1			
Clause	Requirement	Remark	Result
2.3.2.1	General requirements		N
2.3.2.2	Protection by basic insulation		N
2.3.2.3	Protection by earthing		N
2.3.2.4	Protection by other constructions .....		N
2.3.3	Separation from hazardous voltages		N
	Insulation employed .....		—
2.3.4	Connection of TNV circuits to other circuits		N
	Insulation employed .....		—
2.3.5	Test for operating voltages generated externally		N

2.4	Limited current circuits		N
2.4.1	General requirements		N
2.4.2	Limit values		—
	Frequency (Hz) .....		—
	Measured current (mA) .....		—
	Measured voltage (V).....		—
	Measured circuit capacitance (nF or $\mu$ F) .....		—
2.4.3	Connection of limited current circuits to other circuits		N

2.5	Limited power sources		N
	a) Inherently limited output	Not applied for	N
	b) Impedance limited output		N
	c) Regulating network limited output under normal operating and single fault condition		N
	d) Overcurrent protective device limited output		N
	Max. Output voltage (V), max. Output current (A), max. Apparent power (VA).....		—
	Current rating of overcurrent protective device (A) .:		—



EN 60950-1			
Clause	Requirement	Remark	Result
2.6	Provisions for earthing and bonding		N
2.6.1	Protective earthing		N
2.6.2	Functional earthing		N
2.6.3	Protective earthing and protective bonding conductors		N
2.6.3.1	General		N
2.6.3.2	Size of protective earthing conductors		N
	Rated current (A), cross-sectional area (mm <sup>2</sup> ), AWG..... :		—
2.6.3.3	Size of protective bonding conductors		N
	Rated current (A), cross-sectional area (mm <sup>2</sup> ), AWG..... :		—
	Protective current rating (A), cross-sectional area (mm <sup>2</sup> ), AWG..... :		—
2.6.3.4	Resistance of earthing conductors and their terminations; resistance (Ω), voltage drop (V), test current (A), duration (min)..... :		N
2.6.3.5	Colour of insulation ..... :		N
2.6.4	Terminals		N
2.6.4.1	General		N
2.6.4.2	Protective earthing and bonding terminals		N
	Rated current (A), type, nominal thread diameter (mm)..... :		—
2.6.4.3	Separation of the protective earthing conductor from protective bonding conductors		N
2.6.5	Integrity of protective earthing		N
2.6.5.1	Interconnection of equipment		N
2.6.5.2	Components in protective earthing conductors and protective bonding conductors		N
2.6.5.3	Disconnection of protective earth		N
2.6.5.4	Parts that can be removed by an operator	None	N



EN 60950-1			
Clause	Requirement	Remark	Result
2.6.5.5	Parts removed during servicing	No protective earth connection needs to be removed for servicing	N
2.6.5.6	Corrosion resistance		N
2.6.5.7	Screws for protective bonding		N
2.6.5.8	Reliance on telecommunication network or cable distribution system	No TNV	N

2.7	Overcurrent and earth fault protection in primary circuits		N
2.7.1	Basic requirements		N
	Instructions when protection relies on building installation		N
2.7.2	Faults not simulated in 5.3.7		N
2.7.3	Short-circuit backup protection		N
2.7.4	Number and location of protective devices .....		N
2.7.5	Protection by several devices		N
2.7.6	Warning to service personnel .....		N

2.8	Safety interlocks		N
2.8.1	General principles		N
2.8.2	Protection requirements		N
2.8.3	Inadvertent reactivation		N
2.8.4	Fail-safe operation		N
2.8.5	Moving parts		N
2.8.6	Overriding		N
2.8.7	Switches and relays		N
2.8.7.1	Contact gaps (mm) .....		N
2.8.7.2	Overload test		N
2.8.7.3	Endurance test		N
2.8.7.4	Electric strength test		N



EN 60950-1			
Clause	Requirement	Remark	Result
2.8.8	Mechanical actuators		N

2.9	Electrical insulation		P
2.9.1	Properties of insulating materials		N
2.9.2	Humidity conditioning		N
	Relative humidity (%), temperature (°C) .....		—
2.9.3	Grade of insulation	Functional insulation	P
2.9.4	Separation from hazardous voltages		N
	Method(s) used .....		—

2.10	Clearances, creepage distances and distances through insulation		N
2.10.1	General		N
2.10.1.1	Frequency .....		N
2.10.1.2	Pollution degrees .....		N
2.10.1.3	Reduced values for functional insulation		N
2.10.1.4	Intervening unconnected conductive parts		N
2.10.1.5	Insulation with varying dimensions		N
2.10.1.6	Special separation requirements		N
2.10.1.7	Insulation in circuits generating starting pulses		N
2.10.2	Determination of working voltage		N
2.10.2.1	General		N
2.10.2.2	RMS working voltage		N
2.10.2.3	Peak working voltage		N
2.10.3	Clearances		N
2.10.3.1	General		N
2.10.3.2	Mains transient voltages		N
	a) AC mains supply .....		N
	b) Earthed d.c. mains supplies .....		N
	c) Unearthed d.c. mains supplies .....		N



EN 60950-1			
Clause	Requirement	Remark	Result
	d) Battery operation .....		N
2.10.3.3	Clearances in primary circuits		N
2.10.3.4	Clearances in secondary circuits		N
2.10.3.5	Clearances in circuits having starting pulses		N
2.10.3.6	Transients from a.c. mains supply .....		N
2.10.3.7	Transients from d.c. mains supply .....		N
2.10.3.8	Transients from telecommunication networks and cable distribution systems .....		N
2.10.3.9	Measurement of transient voltage levels		N
	a) Transients from a mains supply		N
	For an a.c. mains supply .....		N
	For a d.c. mains supply .....		N
	b) Transients from a telecommunication network :		N
2.10.4	Creepage distances		N
2.10.4.1	General		N
2.10.4.2	Material group and comparative tracking index		N
	CTI tests.....		—
2.10.4.3	Minimum creepage distances		N
2.10.5	Solid insulation		N
2.10.5.1	General		N
2.10.5.2	Distances through insulation		N
2.10.5.3	Insulating compound as solid insulation		N
2.10.5.4	Semiconductor devices		N
2.10.5.5	Cemented joints		N
2.10.5.6	Thin sheet material – General		N
2.10.5.7	Separable thin sheet material		N
	Number of layers (pcs).....		—
2.10.5.8	Non-separable thin sheet material		N
2.10.5.9	Thin sheet material – standard test procedure		N





EN 60950-1			
Clause	Requirement	Remark	Result
	Electric strength test		—
2.10.5.10	Thin sheet material – alternative test procedure		N
	Electric strength test		—
2.10.5.11	Insulation in wound components		N
2.10.5.12	Wire in wound components		N
	Working voltage .....		N
	a) Basic insulation not under stress .....		N
	b) Basic, supplementary, reinforced insulation .....		N
	c) Compliance with Annex U .....		N
	Two wires in contact inside wound component; angle between 45° and 90° .....		N
2.10.5.13	Wire with solvent-based enamel in wound components		N
	Electric strength test		—
	Routine test		N
2.10.5.14	Additional insulation in wound components		N
	Working voltage .....		N
	- Basic insulation not under stress .....		N
	- Supplementary, reinforced insulation .....		N
2.10.6	Construction of printed boards		N
2.10.6.1	Uncoated printed boards		N
2.10.6.2	Coated printed boards		N
2.10.6.3	Insulation between conductors on the same inner surface of a printed board		N
2.10.6.4	Insulation between conductors on different layers of a printed board		N
	Distance through insulation		N
	Number of insulation layers (pcs) .....		N
2.10.7	Component external terminations		N



EN 60950-1			
Clause	Requirement	Remark	Result
2.10.8	Tests on coated printed boards and coated components		N
2.10.8.1	Sample preparation and preliminary inspection		N
2.10.8.2	Thermal conditioning		N
2.10.8.3	Electric strength test		N
2.10.8.4	Abrasion resistance test		N
2.10.9	Thermal cycling		N
2.10.10	Test for Pollution Degree 1 environment and insulating compound		N
2.10.11	Tests for semiconductor devices and cemented joints		N
2.10.12	Enclosed and sealed parts		N

3	WIRING, CONNECTIONS AND SUPPLY		P
3.1	General		P
3.1.1	Current rating and overcurrent protection	Internal wires are UL recognized and having gauge suitable for current intended to be carried	P
3.1.2	Protection against mechanical damage	Wires do not touch sharp edges which could damage the insulation and cause hazard.	P
3.1.3	Securing of internal wiring	Wires are secured by soldering method and additionally fixed by mechanical means	P
3.1.4	Insulation of conductors	The insulation of the individual conductors is suitable for the application and the working voltage.	P
3.1.5	Beads and ceramic insulators	No beads or similar ceramic insulators on conductors.	N
3.1.6	Screws for electrical contact pressure	No screw for electrical contact.	P



EN 60950-1			
Clause	Requirement	Remark	Result
3.1.7	Insulating materials in electrical connections	Contact pressure is not transmitted through insulating material.	N
3.1.8	Self-tapping and spaced thread screws	Thread-cutting or space thread screws are not used for electrical connections.	P
3.1.9	Termination of conductors		N
	10 N pull test		N
3.1.10	Sleeving on wiring	No sleeving used on wirings for supplementary insulation.	N

3.2	Connection to a mains supply		N
3.2.1	Means of connection		N
3.2.1.1	Connection to an a.c. mains supply		N
3.2.1.2	Connection to a d.c. mains supply		N
3.2.2	Multiple supply connections		N
3.2.3	Permanently connected equipment		N
	Number of conductors, diameter of cable and conduits (mm) .....		—
3.2.4	Appliance inlets		N
3.2.5	Power supply cords		N
3.2.5.1	AC power supply cords		N
	Type .....		—
	Rated current (A), cross-sectional area (mm <sup>2</sup> ), AWG .....		—
3.2.5.2	DC power supply cords		N
3.2.6	Cord anchorages and strain relief		N
	Mass of equipment (kg), pull (N) .....		—
	Longitudinal displacement (mm) .....		—
3.2.7	Protection against mechanical damage		N
3.2.8	Cord guards		N



EN 60950-1			
Clause	Requirement	Remark	Result
	Diameter or minor dimension D (mm); test mass (g) .....:		—
	Radius of curvature of cord (mm) .....		—
3.2.9	Supply wiring space		N

3.3	Wiring terminals for connection of external conductors		N
3.3.1	Wiring terminals		N
3.3.2	Connection of non-detachable power supply cords		N
3.3.3	Screw terminals		N
3.3.4	Conductor sizes to be connected		N
	Rated current (A), cord/cable type, cross-sectional area (mm <sup>2</sup> ) .....		—
3.3.5	Wiring terminal sizes		N
	Rated current (A), type, nominal thread diameter (mm) .....		—
3.3.6	Wiring terminal design		N
3.3.7	Grouping of wiring terminals		N
3.3.8	Stranded wire		N

3.4	Disconnection from the mains supply		N
3.4.1	General requirement		N
3.4.2	Disconnect devices		N
3.4.3	Permanently connected equipment		N
3.4.4	Parts which remain energized		N
3.4.5	Switches in flexible cords		N
3.4.6	Number of poles – single-phase and d.c. equipment		N
3.4.7	Number of poles – three-phase equipment		N
3.4.8	Switches as disconnect devices		N
3.4.9	Plugs as disconnect devices		N
3.4.10	Interconnected equipment		N



EN 60950-1			
Clause	Requirement	Remark	Result
3.4.11	Multiple power sources	Only one supply connection provided.	N

3.5	Interconnection of equipment		P
3.5.1	General requirements	Considered	P
3.5.2	Types of interconnection circuits .....	Interconnection circuits of SELV through the connector. No ELV interconnection circuits.	P
3.5.3	ELV circuits as interconnection circuits	No ELV	N
3.5.4	Data ports for additional equipment		N

4	PHYSICAL REQUIREMENTS		P
4.1	Stability		N
	Angle of 10°	Mass < 7kg	N
	Test force (N) .....	The unit is not floor-standing.	N

4.2	Mechanical strength		P
4.2.1	General	Complies with the requirement also after tests described below are applied.	P
4.2.2	Steady force test, 10 N	No hazard.	P
4.2.3	Steady force test, 30 N	No internal enclosure.	N
4.2.4	Steady force test, 250 N	No hazard. Enclosure withstands 250N	P
4.2.5	Impact test		N
	Fall test		N
	Swing test		N
4.2.6	Drop test; height (mm) .....	No hazard as result from the drop test at 1000mm height.	P
4.2.7	Stress relief test		N
4.2.8	Cathode ray tubes	None provided	N



EN 60950-1			
Clause	Requirement	Remark	Result
	Picture tube separately certified .....		N
4.2.9	High pressure lamps	No high pressure lamps in the equipment.	N
4.2.10	Wall or ceiling mounted equipment; force (N) .....	Not intended to be mounted on a wall or ceiling.	N

4.3	Design and construction		P
4.3.1	Edges and corners	All edges and corners are rounded and/or smoothed.	P
4.3.2	Handles and manual controls; force (N) .....	No knobs, grips, handles, lever etc.	N
4.3.3	Adjustable controls	No hazardous adjustable controls.	N
4.3.4	Securing of parts		N
4.3.5	Connection by plugs and sockets		N
4.3.6	Direct plug-in equipment		N
	Torque .....		—
	Compliance with the relevant mains plug standard .....		N
4.3.7	Heating elements in earthed equipment	No heating elements provided.	N
4.3.8	Batteries		P
	- Overcharging of a rechargeable battery		N
	- Unintentional charging of a non-rechargeable battery		P
	- Reverse charging of a rechargeable battery		N
	- Excessive discharging rate for any battery		N
4.3.9	Oil and grease	Insulation is not exposed to oil, grease etc.	N



EN 60950-1			
Clause	Requirement	Remark	Result
4.3.10	Dust, powders, liquids and gases	The equipment does not generate ionizing radiation or use a laser, and does not contain flammable liquids or gases.	N
4.3.11	Containers for liquids or gases	No containers for liquids or gases in the equipment.	N
4.3.12	Flammable liquids .....	The equipment does not contain flammable liquid.	N
	Quantity of liquid (l) .....		N
	Flash point (°C) .....		N
4.3.13	Radiation	Refer below:	N
4.3.13.1	General	Refer below:	N
4.3.13.2	Ionizing radiation	The equipment does not generate ionizing radiation.	N
	Measured radiation (pA/kg) .....		—
	Measured high-voltage (kV) .....		—
	Measured focus voltage (kV) .....		—
	CRT markings .....		—
4.3.13.3	Effect of ultraviolet (UV) radiation on materials	The equipment does not produce significant UV radiation.	N
	Part, property, retention after test, flammability classification .....		N
4.3.13.4	Human exposure to ultraviolet (UV) radiation .....	The equipment does not produce significant UV radiation.	N
4.3.13.5	Laser (including LEDs)		P
	Laser class .....		—
4.3.13.6	Other types .....	The equipment does not generate other types of radiation.	N



EN 60950-1			
Clause	Requirement	Remark	Result

4.4	Protection against hazardous moving parts		N
4.4.1	General	No moving parts.	N
4.4.2	Protection in operator access areas .....	No moving parts.	N
4.4.3	Protection in restricted access locations .....	Not evaluated for restricted access locations	N
4.4.4	Protection in service access areas	Unintentional contact is not likely in service access areas.	N
4.4.5	Protection against moving fan blades		N
4.4.5.1	General		N
	Not considered to cause pain or injury. a).....		N
	Is considered to cause pain, not injury. b) .....		N
	Considered to cause injury. c) .....		N
4.4.5.2	Protection for users		N
	Use of symbol or warning .....		N
4.4.5.3	Protection for service persons		N
	Use of symbol or warning .....		N

4.5	Thermal requirements		P
4.5.1	General	See below	P
4.5.2	Temperature tests		P
	Normal load condition per Annex L .....		—
4.5.3	Temperature limits for materials	(see appended table 4.5)	P
4.5.4	Touch temperature limits	(see appended table 4.5)	P
4.5.5	Resistance to abnormal heat .....		N

4.6	Openings in enclosures		N
4.6.1	Top and side openings	No openings.	N
	Dimensions (mm) .....		—
4.6.2	Bottoms of fire enclosures	No openings.	N





EN 60950-1			
Clause	Requirement	Remark	Result
	Construction of the bottom, dimensions (mm) .:		—
4.6.3	Doors or covers in fire enclosures	No doors or covers.	N
4.6.4	Openings in transportable equipment	No openings in the equipment.	N
4.6.4.1	Constructional design measures	No openings in the equipment.	N
	Dimensions (mm) .....		—
4.6.4.2	Evaluation measures for larger openings		N
4.6.4.3	Use of metallized parts		N
4.6.5	Adhesives for constructional purposes	No adhesives for constructional purposes used	N
	Conditioning temperature (°C), time (weeks).....:		—

4.7	Resistance to fire		P
4.7.1	Reducing the risk of ignition and spread of flame	No excessive temperatures, no easily burning materials employed	P
	Method 1, selection and application of components wiring and materials		P
	Method 2, application of all of simulated fault condition tests		N
4.7.2	Conditions for a fire enclosure		P
4.7.2.1	Parts requiring a fire enclosure		N
4.7.2.2	Parts not requiring a fire enclosure	With having the following part: - secondary circuits supplied by LPS. The fire enclosure is not required.	P
4.7.3	Materials		P
4.7.3.1	General	Components and materials have adequate flammability classification.	P
4.7.3.2	Materials for fire enclosures	See clause 4.7.2.2	N



EN 60950-1			
Clause	Requirement	Remark	Result
4.7.3.3	Materials for components and other parts outside fire enclosures		P
4.7.3.4	Materials for components and other parts inside fire enclosures		N
4.7.3.5	Materials for air filter assemblies	No air filters in the equipment.	N
4.7.3.6	Materials used in high-voltage components	No such components	N

5	ELECTRICAL REQUIREMENTS AND SIMULATED ABNORMAL CONDITIONS		N
5.1	Touch current and protective conductor current		N
5.1.1	General		N
5.1.2	Configuration of equipment under test (EUT)		N
5.1.2.1	Single connection to an a.c. mains supply		N
5.1.2.2	Redundant multiple connections to an a.c. mains supply	No multiple power sources.	N
5.1.2.3	Simultaneous multiple connections to an a.c. mains supply	No multiple power sources.	N
5.1.3	Test circuit		N
5.1.4	Application of measuring instrument		N
5.1.5	Test procedure		N
5.1.6	Test measurements		—
	Supply voltage (V) .....		—
	Measured touch current (mA) .....		—
	Max. Allowed touch current (mA) .....		—
	Measured protective conductor current (mA) .....		—
	Max. Allowed protective conductor current (mA) ..		—
5.1.7	Equipment with touch current exceeding 3,5 mA		N
5.1.7.1	General .....		N
5.1.7.2	Simultaneous multiple connections to the supply		N



EN 60950-1			
Clause	Requirement	Remark	Result
5.1.8	Touch currents to telecommunication networks and cable distribution systems and from telecommunication networks	Not connected to a telecommunication network nor a cable distribution system.	N
5.1.8.1	Limitation of the touch current to a telecommunication network or to a cable distribution system	Not connected to a telecommunication network.	N
	Supply voltage (V) .....		—
	Measured touch current (mA) .....		—
	Max. Allowed touch current (mA) .....		—
5.1.8.2	Summation of touch currents from telecommunication networks	Not connected to a telecommunication network.	N
	a) EUT with earthed telecommunication ports ....		N
	b) EUT whose telecommunication ports have no reference to protective earth		N

5.2	Electric strength		N
5.2.1	General		N
5.2.2	Test procedure		N

5.3	Abnormal operating and fault conditions		P
5.3.1	Protection against overload and abnormal operation	(see appended table 5.3)	P
5.3.2	Motors	Approved DC fan used.	P
5.3.3	Transformers		N
5.3.4	Functional insulation .....	(see appended table 5.3)	P
5.3.5	Electromechanical components	No electromechanical components	N
5.3.6	Audio amplifiers in ITE .....	There is no audio amplifiers in the equipment.	N
5.3.7	Simulation of faults	(see appended table 5.3)	P
5.3.8	Unattended equipment	No such equipment.	N



EN 60950-1			
Clause	Requirement	Remark	Result
5.3.9	Compliance criteria for abnormal operating and fault conditions	See below.	P
5.3.9.1	During the tests	No fire or molten metal occurred and no deformation of enclosure during the tests.	P
5.3.9.2	After the tests	No hazard.	P

6	CONNECTION TO TELECOMMUNICATION NETWORKS		N
6.1	Protection of telecommunication network service persons, and users of other equipment connected to the network, from hazards in the equipment		N
6.1.1	Protection from hazardous voltages		N
6.1.2	Separation of the telecommunication network from earth		N
6.1.2.1	Requirements		N
	Supply voltage (V) .....		—
	Current in the test circuit (mA) .....		—
6.1.2.2	Exclusions .....		N

6.2	Protection of equipment users from overvoltages on telecommunication networks		N
6.2.1	Separation requirements		N
6.2.2	Electric strength test procedure		N
6.2.2.1	Impulse test		N
6.2.2.2	Steady-state test		N
6.2.2.3	Compliance criteria		N

6.3	Protection of the telecommunication wiring system from overheating		N
	Max. Output current (A) .....		—
	Current limiting method .....		—

7	CONNECTION TO CABLE DISTRIBUTION SYSTEMS		N
7.1	General		N



EN 60950-1			
Clause	Requirement	Remark	Result
7.2	Protection of cable distribution system service persons, and users of other equipment connected to the system, from hazardous voltages in the equipment		N
7.3	Protection of equipment users from overvoltages on the cable distribution system		N
7.4	Insulation between primary circuits and cable distribution systems		N
7.4.1	General		N
7.4.2	Voltage surge test		N
7.4.3	Impulse test		N

A	ANNEX A, TESTS FOR RESISTANCE TO HEAT AND FIRE		N
A.1	Flammability test for fire enclosures of movable equipment having a total mass exceeding 18 kg, and of stationary equipment (see 4.7.3.2)		N
A.1.1	Samples .....		—
	Wall thickness (mm).....		—
A.1.2	Conditioning of samples; temperature (°C) .....		N
A.1.3	Mounting of samples .....		N
A.1.4	Test flame (see IEC 60695-11-3)		N
	Flame A, B, C or D .....		—
A.1.5	Test procedure		N
A.1.6	Compliance criteria		N
	Sample 1 burning time (s).....		—
	Sample 2 burning time (s).....		—
	Sample 3 burning time (s).....		—
A.2	Flammability test for fire enclosures of movable equipment having a total mass not exceeding 18 kg, and for material and components located inside fire enclosures (see 4.7.3.2 and 4.7.3.4)		N
A.2.1	Samples, material .....		—



EN 60950-1			
Clause	Requirement	Remark	Result
	Wall thickness (mm)..... :		—
A.2.2	Conditioning of samples; temperature (°C) ..... :		N
A.2.3	Mounting of samples ..... :		N
A.2.4	Test flame (see IEC 60695-11-4)		N
	Flame A, B or C ..... :		—
A.2.5	Test procedure		N
A.2.6	Compliance criteria		N
	Sample 1 burning time (s)..... :		—
	Sample 2 burning time (s)..... :		—
	Sample 3 burning time (s)..... :		—
A.2.7	Alternative test acc. To IEC 60695-11-5, cl. 5 and 9		N
	Sample 1 burning time (s)..... :		—
	Sample 2 burning time (s)..... :		—
	Sample 3 burning time (s)..... :		—
A.3	Hot flaming oil test (see 4.6.2)		N
A.3.1	Mounting of samples		N
A.3.2	Test procedure		N
A.3.3	Compliance criterion		N

B	ANNEX B, MOTOR TESTS UNDER ABNORMAL CONDITIONS (see 4.7.2.2 and 5.3.2)		N
B.1	General requirements		N
	Position ..... :		—
	Manufacturer ..... :		—
	Type ..... :		—
	Rated values ..... :		—
B.2	Test conditions		N
B.3	Maximum temperatures		N
B.4	Running overload test		N



EN 60950-1			
Clause	Requirement	Remark	Result
B.5	Locked-rotor overload test		N
	Test duration (days) .....		—
	Electric strength test: test voltage (V) .....		—
B.6	Running overload test for d.c. motors in secondary circuits		N
B.6.1	General		N
B.6.2	Test procedure		N
B.6.3	Alternative test procedure		N
B.6.4	Electric strength test; test voltage (V) .....		N
B.7	Locked-rotor overload test for d.c. motors in secondary circuits		N
B.7.1	General		N
B.7.2	Test procedure		N
B.7.3	Alternative test procedure		N
B.7.4	Electric strength test; test voltage (V) .....		N
B.8	Test for motors with capacitors		N
B.9	Test for three-phase motors		N
B.10	Test for series motors		N
	Operating voltage (V) .....		—

C	ANNEX C, TRANSFORMERS (see 1.5.4 and 5.3.3)		N
	Position .....		—
	Manufacturer .....		—
	Type .....		—
	Rated values .....		—
	Method of protection .....		—
C.1	Overload test		N
C.2	Insulation		N
	Protection from displacement of windings .....		N



EN 60950-1			
Clause	Requirement	Remark	Result
D	ANNEX D, MEASURING INSTRUMENTS FOR TOUCH-CURRENT TESTS (see 5.1.4)		N
D.1	Measuring instrument		N
D.2	Alternative measuring instrument		N
E	ANNEX E, TEMPERATURE RISE OF A WINDING (see 1.4.13)		N
F	ANNEX F, MEASUREMENT OF CLEARANCES AND CREEPAGE DISTANCES (see 2.10 and Annex G)		N
G	ANNEX G, ALTERNATIVE METHOD FOR DETERMINING MINIMUM CLEARANCES		N
G.1	Clearances		N
G.1.1	General		N
G.1.2	Summary of the procedure for determining minimum clearances		N
G.2	Determination of mains transient voltage (V)		N
G.2.1	AC mains supply .....		N
G.2.2	Earthed d.c. mains supplies .....		N
G.2.3	Unearthed d.c. mains supplies .....		N
G.2.4	Battery operation .....		N
G.3	Determination of telecommunication network transient voltage (V) .....		N
G.4	Determination of required withstand voltage (V)		N
G.4.1	Mains transients and internal repetitive peaks .....		N
G.4.2	Transients from telecommunication networks .....		N
G.4.3	Combination of transients		N
G.4.4	Transients from cable distribution systems		N
G.5	Measurement of transient voltages (V)		N
	a) Transients from a mains supply		N





EN 60950-1			
Clause	Requirement	Remark	Result
	For an a.c. mains supply		N
	For a d.c. mains supply		N
	b) Transients from a telecommunication network		N
G.6	Determination of minimum clearances .....		N

H	ANNEX H, IONIZING RADIATION (see 4.3.13)		N
---	--	--	---

J	ANNEX J, TABLE OF ELECTROCHEMICAL POTENTIALS (see 2.6.5.6)		N
	Metal(s) used .....		—

K	ANNEX K, THERMAL CONTROLS (see 1.5.3 and 5.3.8)		N
K.1	Making and breaking capacity		N
K.2	Thermostat reliability; operating voltage (V) .....		N
K.3	Thermostat endurance test; operating voltage (V) .....		N
K.4	Temperature limiter endurance; operating voltage (V) .....		N
K.5	Thermal cut-out reliability		N
K.6	Stability of operation		N

L	ANNEX L, NORMAL LOAD CONDITIONS FOR SOME TYPES OF ELECTRICAL BUSINESS EQUIPMENT (see 1.2.2.1 and 4.5.2)		P
L.1	Typewriters		N
L.2	Adding machines and cash registers		N
L.3	Erasers		N
L.4	Pencil sharpeners		N
L.5	Duplicators and copy machines		N
L.6	Motor-operated files		N
L.7	Other business equipment		P



EN 60950-1			
Clause	Requirement	Remark	Result
M	ANNEX M, CRITERIA FOR TELEPHONE RINGING SIGNALS (see 2.3.1)		N
M.1	Introduction		N
M.2	Method A		N
M.3	Method B		N
M.3.1	Ringling signal		N
M.3.1.1	Frequency (Hz) .....		—
M.3.1.2	Voltage (V) .....		—
M.3.1.3	Cadence; time (s), voltage (V) .....		—
M.3.1.4	Single fault current (mA) .....		—
M.3.2	Tripping device and monitoring voltage .....		N
M.3.2.1	Conditions for use of a tripping device or a monitoring voltage		N
M.3.2.2	Tripping device		N
M.3.2.3	Monitoring voltage (V) .....		N
N	ANNEX N, IMPULSE TEST GENERATORS (see 1.5.7.2, 1.5.7.3, 2.10.3.9, 6.2.2.1, 7.3.2, 7.4.3 and Clause G.5)		N
N.1	ITU-T impulse test generators		N
N.2	IEC 60065 impulse test generator		N
P	ANNEX P, NORMATIVE REFERENCES		—
Q	ANNEX Q, Voltage dependent resistors (VDRs) (see 1.5.9.1)		N
	a) Preferred climatic categories .....		N
	b) Maximum continuous voltage .....		N
	c) Pulse current .....		N
R	Annex R, EXAMPLES OF REQUIREMENTS FOR QUALITY CONTROL PROGRAMMES		N



EN 60950-1			
Clause	Requirement	Remark	Result
R.1	Minimum separation distances for unpopulated coated printed boards (see 2.10.6.2)		N
R.2	Reduced clearances (see 2.10.3)		N
S	ANNEX S, PROCEDURE FOR IMPULSE TESTING (see 6.2.2.3)		N
S.1	Test equipment		N
S.2	Test procedure		N
S.3	Examples of waveforms during impulse testing		N
T	ANNEX T, GUIDANCE ON PROTECTION AGAINST INGRESS OF WATER (see 1.1.2)		N
U	ANNEX U, INSULATED WINDING WIRES FOR USE WITHOUT INTERLEAVED INSULATION (see 2.10.5.4)		N
V	ANNEX V, AC POWER DISTRIBUTION SYSTEMS (see 1.6.1)		N
V.1	Introduction		N
V.2	TN power distribution systems		N
W	ANNEX W, SUMMATION OF TOUCH CURRENTS		N
W.1	Touch current from electronic circuits		N
W.1.1	Floating circuits		N
W.1.2	Earthed circuits		N
W.2	Interconnection of several equipments		N
W.2.1	Isolation		N
W.2.2	Common return, isolated from earth		N
W.2.3	Common return, connected to protective earth		N
X	ANNEX X, MAXIMUM HEATING EFFECT IN TRANSFORMER TESTS (see clause C.1)		N
X.1	Determination of maximum input current		N



EN 60950-1			
Clause	Requirement	Remark	Result
X.2	Overload test procedure		N
Y	ANNEX Y, ULTRAVIOLET LIGHT CONDITIONING TEST (see 4.3.13.3)		N
Y.1	Test apparatus .....		N
Y.2	Mounting of test samples .....		N
Y.3	Carbon-arc light-exposure apparatus .....		N
Y.4	Xenon-arc light exposure apparatus .....		N
Z	ANNEX Z, OVERVOLTAGE CATEGORIES (see 2.10.3.2 and Clause G.2)		N
AA	ANNEX AA, MANDREL TEST (see 2.10.5.8)		N
BB	ANNEX BB, CHANGES IN THE SECOND EDITION		—
CC	Annex CC, Evaluation of integrated circuit (IC) current limiters		N
CC.1	General		N
CC.2	Test program 1.....		N
CC.3	Test program 2.....		N
DD	Annex DD, Requirements for the mounting means of rack-mounted equipment		N
DD.1	General		N
DD.2	Mechanical strength test, variable N.....		N
DD.3	Mechanical strength test, 250N, including end stops.....		N
DD.4	Compliance.....		N
EE	Annex EE, Household and home/office document/media shredders		N
EE.1	General		N
EE.2	Markings and instructions		N
	Use of markings or symbols.....		N



EN 60950-1			
Clause	Requirement	Remark	Result
	Information of user instructions, maintenance and/or servicing instructions.....:		N
EE.3	Inadvertent reactivation test.....:		N
EE.4	Disconnection of power to hazardous moving parts:		N
	Use of markings or symbols.....:		N
EE.5	Protection against hazardous moving parts		N
	Test with test finger (Figure 2A) .....		N
	Test with wedge probe (Figure EE1 and EE2) .....		N



EN 60950-1			
Clause	Requirement	Remark	Result
EN 60950-1:2006 – CENELEC COMMON MODIFICATIONS			
Contents	Add the following annexes: Annex ZA (normative) Normative references to international publications with their corresponding European publications Annex ZB (normative) Special national conditions Annex ZC (informative) A-deviations		P
General	Delete all the “country” notes in the reference document according to the following list:  1.4.8 Note 2                      1.5.1 Note 2 & 3                      1.5.7.1 Note 1.5.8 Note 2                      1.5.9.4 Note                      1.7.2.1 Note 4, 5 & 6 2.2.3 Note                      2.2.4 Note                      2.3.2 Note 2.3.2.1 Note 2                      2.3.4 Note 2                      2.6.3.3 Note 2 & 3 2.7.1 Note                      2.10.3.2 Note 2                      2.10.5.13 Note 3 3.2.1.1 Note                      3.2.4 Note 3.                      2.5.1 Note 2 4.3.6 Note 1 & 2                      4.7 Note 4                      4.7.2.2 Note 4.7.3.1 Note 2                      5.1.7.1 Note 3 & 4                      5.3.7 Note 1 6 Note 2 & 5                      6.1.2.1 Note 2                      6.1.2.2 Note 6.2.2 Note 6.                      2.2.1 Note 2                      6.2.2.2 Note 7.1 Note 3                      7.2 Note                      7.3 Note 1 & 2 G.2.1 Note 2                      Annex H Note 2		—
1.3.Z1	Add the following subclause: 1.3.Z1 Exposure to excessive sound pressure  The apparatus shall be so designed and constructed as to present no danger when used for its intended purpose, either in normal operating conditions or under fault conditions, particularly providing protection against exposure to excessive sound pressures from headphones or earphones.  NOTE Z1 A new method of measurement is described in EN 50332-1, Sound system equipment: Headphones and earphones associated with portable audio equipment – Maximum sound pressure level measurement methodology and limit considerations – Part 1: General method for “one package equipment”, and in EN 50332-2, Sound system equipment: Headphones and earphones associated with portable audio equipment – Maximum sound pressure level measurement methodology and limit considerations – Part 2: Guidelines to associate sets with headphones coming from different manufacturers.		N



EN 60950-1			
Clause	Requirement	Remark	Result
1.5.1	Add the following NOTE: NOTE Z1 The use of certain substances in electrical and electronic equipment is restricted within the EU: see Directive 2002/95/EC		N
1.7.2.1	Add the following NOTE: NOTE Z1 In addition, the instructions shall include, as far as applicable, a warning that excessive sound pressure from earphones and headphones can cause hearing loss		N
2.7.1	Replace the subclause as follows: Basic requirements To protect against excessive current, short-circuits and earth faults in PRIMARY CIRCUITS, protective devices shall be included either as integral parts of the equipment or as parts of the building installation, subject to the following, a), b) and c): a) except as detailed in b) and c), protective devices necessary to comply with the requirements of 5.3 shall be included as parts of the equipment; b) for components in series with the mains input to the equipment such as the supply cord, appliance coupler, r.f.i. filter and switch, short-circuit and earth fault protection may be provided by protective devices in the building installation; c) it is permitted for PLUGGABLE EQUIPMENT TYPE B or PERMANENTLY CONNECTED EQUIPMENT, to rely on dedicated overcurrent and short-circuit protection in the building installation, provided that the means of protection, e.g. fuses or circuit breakers, is fully specified in the installation instructions. If reliance is placed on protection in the building installation, the installation instructions shall so state, except that for PLUGGABLE EQUIPMENT TYPE A the building installation shall be regarded as providing protection in accordance with the rating of the wall socket outlet.		N
2.7.2	This subclause has been declared 'void'.		-
3.2.3	Delete the NOTE in Table 3A, and delete also in this table the conduit sizes in parentheses.		N



EN 60950-1															
Clause	Requirement	Remark	Result												
3.2.5.1	<p>Replace “60245 IEC 53” by “H05 RR-F”;  “60227 IEC 52” by “H03 VV-F or H03 VVH2-F”;  “60227 IEC 53” by “H05 VV-F or H05 VVH2-F2”.</p> <p>In Table 3B, replace the first four lines by the following:</p> <table border="0"> <tr> <td>  Up to and including 6</td> <td> </td> <td>0,75<sup>a)</sup></td> <td> </td> </tr> <tr> <td>  Over 6 up to and including 10</td> <td> </td> <td>(0,75)<sup>b)</sup></td> <td>1,0  </td> </tr> <tr> <td>  Over 10 up to and including 16</td> <td> </td> <td>(1,0)<sup>c)</sup></td> <td>1,5  </td> </tr> </table> <p>In the conditions applicable to Table 3B delete the words “in some countries” in condition<sup>a)</sup>.</p> <p>In NOTE 1, applicable to Table 3B, delete the second sentence.</p>	Up to and including 6		0,75 <sup>a)</sup>		Over 6 up to and including 10		(0,75) <sup>b)</sup>	1,0	Over 10 up to and including 16		(1,0) <sup>c)</sup>	1,5		N
Up to and including 6		0,75 <sup>a)</sup>													
Over 6 up to and including 10		(0,75) <sup>b)</sup>	1,0												
Over 10 up to and including 16		(1,0) <sup>c)</sup>	1,5												
3.3.4	<p>In Table 3D, delete the fourth line: conductor sizes for 10 to 13 A, and replace with the following:</p> <table border="0"> <tr> <td>  Over 10 up to and including 16</td> <td> </td> <td>1,5 to 2,5</td> <td> </td> <td>1,5 to 4</td> <td> </td> </tr> </table> <p>Delete the fifth line: conductor sizes for 13 to 16 A.</p>	Over 10 up to and including 16		1,5 to 2,5		1,5 to 4			N						
Over 10 up to and including 16		1,5 to 2,5		1,5 to 4											
4.3.13.6	<p>Add the following NOTE:</p> <p>NOTE Z1 Attention is drawn to 1999/519/EC: Council Recommendation on the limitation of exposure of the general public to electromagnetic fields 0 Hz to 300 GHz. Standards taking into account this Recommendation which demonstrate compliance with the applicable EU Directive are indicated in the OJEC.</p>		—												
Annex H	<p>Replace the last paragraph of this annex by:</p> <p>At any point 10 cm from the surface of the OPERATOR ACCESS AREA, the dose rate shall not exceed 1 µSv/h (0,1 mR/h) (see NOTE). Account is taken of the background level.</p> <p>Replace the notes as follows:</p> <p>NOTE These values appear in Directive 96/29/Euratom.</p> <p>Delete NOTE 2.</p>		N												
Bibliography	Additional EN standards.		—												
ZA	NORMATIVE REFERENCES TO INTERNATIONAL PUBLICATIONS WITH THEIR CORRESPONDING EUROPEAN PUBLICATIONS		—												
ZB	SPECIAL NATIONAL CONDITIONS		N												





EN 60950-1			
Clause	Requirement	Remark	Result
1.2.4.1	In <b>Denmark</b> , certain types of Class I appliances (see 3.2.1.1) may be provided with a plug not establishing earthing conditions when inserted into Danish socket-outlets.		N
1.5.7.1	In <b>Finland, Norway and Sweden</b> , resistors bridging BASIC INSULATION in CLASS I PLUGGABLE EQUIPMENT TYPE A must comply with the requirements in 1.5.7.2.		N
1.5.8	In <b>Norway</b> , due to the IT power system used (see annex V, Figure V.7), capacitors are required to be rated for the applicable line-to-line voltage (230 V).		N
1.5.9.4	In <b>Finland, Norway and Sweden</b> , the third dashed sentence is applicable only to equipment as defined in 6.1.2.2 of this annex.		N
1.7.2.1	In <b>Finland, Norway and Sweden</b> , CLASS I PLUGGABLE EQUIPMENT TYPE A intended for connection to other equipment or a network shall, if safety relies on connection to protective earth or if surge suppressors are connected between the network terminals and accessible parts, have a marking stating that the equipment must be connected to an earthed mains socket-outlet.  The marking text in the applicable countries shall be as follows:  In Finland: "Laite on liitettävä suojavaadoituskoskettimilla varustettuun pistorasiaan"  In Norway: "Apparatet må tilkoples jordet stikkontakt"  In Sweden: "Apparaten skall anslutas till jordat uttag"		N
1.7.5	In <b>Denmark</b> , socket-outlets for providing power to other equipment shall be in accordance with the Heavy Current Regulations, Section 107-2-D1, Standard Sheet DK 1-3a, DK 1-5a or DK 1-7a, when used on Class I equipment. For STATIONARY EQUIPMENT the socket-outlet shall be in accordance with Standard Sheet DK 1-1b or DK 1-5a.		N
2.2.4	In <b>Norway</b> , for requirements see 1.7.2.1, 6.1.2.1 and 6.1.2.2 of this annex.		N
2.3.2	In <b>Finland, Norway and Sweden</b> there are additional requirements for the insulation. See 6.1.2.1 and 6.1.2.2 of this annex.		N
2.3.4	In <b>Norway</b> , for requirements see 1.7.2.1, 6.1.2.1 and 6.1.2.2 of this annex.		N
2.6.3.3	In the <b>United Kingdom</b> , the current rating of the circuit shall be taken as 13 A, not 16 A.		N
2.7.1	In the <b>United Kingdom</b> , to protect against excessive currents and short-circuits in the PRIMARY CIRCUIT of DIRECT PLUG-IN EQUIPMENT, tests according to 5.3 shall be conducted, using an external protective device rated 30 A or 32 A. If these tests fail, suitable protective devices shall be included as integral parts of the DIRECT PLUG-IN EQUIPMENT, so that the requirements of 5.3 are met.		N



EN 60950-1			
Clause	Requirement	Remark	Result
2.10.5.13	In <b>Finland, Norway and Sweden</b> , there are additional requirements for the insulation, see 6.1.2.1 and 6.1.2.2 of this annex.		N
3.2.1.1	<p>In <b>Switzerland</b>, supply cords of equipment having a RATED CURRENT not exceeding 10 A shall be provided with a plug complying with SEV 1011 or IEC 60884-1 and one of the following dimension sheets:</p> <p>SEV 6532-2.1991 Plug Type 15      3P+N+PE      250/400 V, 10 A            SEV 6533-2.1991 Plug Type 11      L+N            250 V, 10 A            SEV 6534-2.1991 Plug Type 12      L+N+PE      250 V, 10 A</p> <p>In general, EN 60309 applies for plugs for currents exceeding 10 A. However, a 16 A plug and socket-outlet system is being introduced in Switzerland, the plugs of which are according to the following dimension sheets, published in February 1998:</p> <p>SEV 5932-2.1998 Plug Type 25      3L+N+PE      230/400 V, 16 A            SEV 5933-2.1998 Plug Type 21      L+N            250 V, 16 A            SEV 5934-2.1998 Plug Type 23      L+N+PE      250 V, 16 A</p>		N
3.2.1.1	<p>In <b>Denmark</b>, supply cords of single-phase equipment having a rated current not exceeding 13 A shall be provided with a plug according to the Heavy Current Regulations, Section 107-2-D1.</p> <p>CLASS I EQUIPMENT provided with socket-outlets with earth contacts or which are intended to be used in locations where protection against indirect contact is required according to the wiring rules shall be provided with a plug in accordance with standard sheet DK 2-1a or DK 2-5a.</p> <p>If poly-phase equipment and single-phase equipment having a RATED CURRENT exceeding 13 A is provided with a supply cord with a plug, this plug shall be in accordance with the Heavy Current Regulations, Section 107-2-D1 or EN 60309-2.</p>		N
3.2.1.1	<p>In <b>Spain</b>, supply cords of single-phase equipment having a rated current not exceeding 10 A shall be provided with a plug according to UNE 20315:1994.</p> <p>Supply cords of single-phase equipment having a rated current not exceeding 2,5 A shall be provided with a plug according to UNE-EN 50075:1993.</p> <p>CLASS I EQUIPMENT provided with socket-outlets with earth contacts or which are intended to be used in locations where protection against indirect contact is required according to the wiring rules, shall be provided with a plug in accordance with standard UNE 20315:1994.</p> <p>If poly-phase equipment is provided with a supply cord with a plug, this plug shall be in accordance with UNE-EN 60309-2.</p>		N



EN 60950-1			
Clause	Requirement	Remark	Result
3.2.1.1	In the <b>United Kingdom</b> , apparatus which is fitted with a flexible cable or cord and is designed to be connected to a mains socket conforming to BS 1363 by means of that flexible cable or cord and plug, shall be fitted with a 'standard plug' in accordance with Statutory Instrument 1768:1994 - The Plugs and Sockets etc. (Safety) Regulations 1994, unless exempted by those regulations.  NOTE 'Standard plug' is defined in SI 1768:1994 and essentially means an approved plug conforming to BS 1363 or an approved conversion plug.		N
3.2.1.1	In <b>Ireland</b> , apparatus which is fitted with a flexible cable or cord and is designed to be connected to a mains socket conforming to I.S. 411 by means of that flexible cable or cord and plug, shall be fitted with a 13 A plug in accordance with Statutory Instrument 525:1997 - National Standards Authority of Ireland (section 28) (13 A Plugs and Conversion Adaptors for Domestic Use) Regulations 1997.		N
3.2.4	In <b>Switzerland</b> , for requirements see 3.2.1.1 of this annex.		N
3.2.5.1	In the <b>United Kingdom</b> , a power supply cord with conductor of 1,25 mm <sup>2</sup> is allowed for equipment with a rated current over 10 A and up to and including 13 A.		N
3.3.4	In the <b>United Kingdom</b> , the range of conductor sizes of flexible cords to be accepted by terminals for equipment with a RATED CURRENT of over 10 A up to and including 13 A is:  • 1,25 mm <sup>2</sup> to 1,5 mm <sup>2</sup> nominal cross-sectional area.		N
4.3.6	In the <b>United Kingdom</b> , the torque test is performed using a socket outlet complying with BS 1363 part 1:1995, including Amendment 1:1997 and Amendment 2:2003 and the plug part of DIRECT PLUG-IN EQUIPMENT shall be assessed to BS 1363: Part 1, 12.1, 12.2, 12.3, 12.9, 12.11, 12.12, 12.13, 12.16 and 12.17, except that the test of 12.17 is performed at not less than 125 °C. Where the metal earth pin is replaced by an Insulated Shutter Opening Device (ISOD), the requirements of clauses 22.2 and 23 also apply.		N
4.3.6	In <b>Ireland</b> , DIRECT PLUG-IN EQUIPMENT is known as plug similar devices. Such devices shall comply with Statutory Instrument 526:1997 - National Standards Authority of Ireland (Section 28) (Electrical plugs, plug similar devices and sockets for domestic use) Regulations, 1997.		N





EN 60950-1			
Clause	Requirement	Remark	Result
5.1.7.1	<p>In <b>Finland, Norway</b> and <b>Sweden</b> TOUCH CURRENT measurement results exceeding 3,5 mA r.m.s. are permitted only for the following equipment:</p> <ul style="list-style-type: none"><li>• STATIONARY PLUGGABLE EQUIPMENT TYPE A that<ul style="list-style-type: none"><li>○ is intended to be used in a RESTRICTED ACCESS LOCATION where equipotential bonding has been applied, for example, in a telecommunication centre; and</li><li>○ has provision for a permanently connected PROTECTIVE EARTHING CONDUCTOR; and</li><li>○ is provided with instructions for the installation of that conductor by a SERVICE PERSON;</li></ul></li><li>• STATIONARY PLUGGABLE EQUIPMENT TYPE B;</li><li>• STATIONARY PERMANENTLY CONNECTED EQUIPMENT.</li></ul>		N



EN 60950-1			
Clause	Requirement	Remark	Result
6.1.2.1	<p>In <b>Finland, Norway and Sweden</b>, add the following text between the first and second paragraph of the compliance clause:</p> <p>If this insulation is solid, including insulation forming part of a component, it shall at least consist of either</p> <ul style="list-style-type: none"> <li>- two layers of thin sheet material, each of which shall pass the electric strength test below, or</li> <li>- one layer having a distance through insulation of at least 0,4 mm, which shall pass the electric strength test below.</li> </ul> <p>If this insulation forms part of a semiconductor component (e.g. an optocoupler), there is no distance through insulation requirement for the insulation consisting of an insulating compound completely filling the casing, so that CLEARANCES and CREEPAGE DISTANCES do not exist, if the component passes the electric strength test in accordance with the compliance clause below and in addition</p> <ul style="list-style-type: none"> <li>- passes the tests and inspection criteria of 2.10.11 with an electric strength test of 1,5 kV multiplied by 1,6 (the electric strength test of 2.10.10 shall be performed using 1,5 kV), and</li> <li>- is subject to ROUTINE TESTING for electric strength during manufacturing, using a test voltage of 1,5 kV.</li> </ul> <p>It is permitted to bridge this insulation with a capacitor complying with EN 132400:1994, subclass Y2.</p> <p>A capacitor classified Y3 according to EN 132400:1994, may bridge this insulation under the following conditions:</p> <ul style="list-style-type: none"> <li>- the insulation requirements are satisfied by having a capacitor classified Y3 as defined by EN 132400, which in addition to the Y3 testing, is tested with an impulse test of 2,5 kV defined in EN 60950-1:2006, 6.2.2.1;</li> <li>- the additional testing shall be performed on all the test specimens as described in EN 132400;</li> <li>- the impulse test of 2,5 kV is to be performed before the endurance test in EN 132400, in the sequence of tests as described in EN 132400.</li> </ul>		N
6.1.2.2	<p>In <b>Finland, Norway and Sweden</b>, the exclusions are applicable for PERMANENTLY CONNECTED EQUIPMENT, PLUGGABLE EQUIPMENT TYPE B and equipment intended to be used in a RESTRICTED ACCESS LOCATION where equipotential bonding has been applied, e.g. in a telecommunication centre, and which has provision for a permanently connected PROTECTIVE EARTHING CONDUCTOR and is provided with instructions for the installation of that conductor by a SERVICE PERSON.</p>		N

EN 60950-1			
Clause	Requirement	Remark	Result
7.2	In <b>Finland, Norway and Sweden</b> , for requirements see 6.1.2.1 and 6.1.2.2 of this annex. The term TELECOMMUNICATION NETWORK in 6.1.2 being replaced by the term CABLE DISTRIBUTION SYSTEM.		N
7.3	In <b>Norway and Sweden</b> , there are many buildings where the screen of the coaxial cable is normally not connected to the earth in the building installation.		N
7.3	In <b>Norway</b> , for installation conditions see EN 60728-11:2005.		N

ZC	A-DEVIATIONS (informative)	—
1.5.1	<b>Sweden</b> (Ordinance 1990:944) Add the following: NOTE In Sweden, switches containing mercury are not permitted.	N
1.5.1	<b>Switzerland</b> (Ordinance on environmentally hazardous substances SR 814.081, Annex 1.7, Mercury - Annex 1.7 of SR 814.81 applies for mercury.) Add the following: NOTE In Switzerland, switches containing mercury such as thermostats, relays and level controllers are not allowed.	N
1.7.2.1	<b>Denmark</b> (Heavy Current Regulations) Supply cords of CLASS I EQUIPMENT, which is delivered without a plug, must be provided with a visible tag with the following text: <p style="text-align: center;">Vigtigt! Lederen med grøn/gul isolation må kun tilsluttes en klemme mærket</p> <p style="text-align: center;"> eller </p> If essential for the safety of the equipment, the tag must in addition be provided with a diagram, which shows the connection of the other conductors, or be provided with the following text: "For tilslutning af de øvrige ledere, se medfølgende installationsvejledning."	N



EN 60950-1			
Clause	Requirement	Remark	Result
1.7.2.1	<p><b>Germany</b> (Gesetz über technische Arbeitsmittel und Verbraucherprodukte (Geräte- und Produktsicherheitsgesetz – GPSG) [Law on technical labour equipment and consumer products], of 6th January 2004, Section 2, Article 4, Clause (4), Item 2).</p> <p>If for the assurance of safety and health certain rules during use, amending or maintenance of a technical labour equipment or readymade consumer product are to be followed, a manual in German language has to be delivered when placing the product on the market.</p> <p>Of this requirement, rules for use even only by SERVICE PERSONS are not exempted.</p>		N
1.7.5	<p><b>Denmark</b> (Heavy Current Regulations)</p> <p>With the exception of CLASS II EQUIPMENT provided with a socket outlet in accordance with the Heavy Current Regulations, Section 107-2-D1, Standard Sheet DK 1-4a, CLASS II EQUIPMENT shall not be fitted with socket-outlets for providing power to other equipment.</p>		N
1.7.13	<p><b>Switzerland</b> (Ordinance on chemical hazardous risk reduction SR 814.81, Annex 2.15 Batteries)</p> <p>Annex 2.15 of SR 814.81 applies for batteries.</p>		N
5.1.7.1	<p><b>Denmark</b> (Heavy Current Regulations, Chapter 707, clause 707.4)</p> <p>TOUCH CURRENT measurement results exceeding 3,5 mA r.m.s. are permitted only for PERMANENTLY CONNECTED EQUIPMENT and PLUGGABLE EQUIPMENT TYPE B.</p>		N



EN 60950-1			
Clause	Requirement	Remark	Result
1.3.Z1	<p>Add the following subclause:</p> <p>1.3.Z1 Exposure to excessive sound pressure</p> <p>The apparatus shall be so designed and constructed as to present no danger when used for its intended purpose, either in normal operating conditions or under fault conditions, particularly providing protection against exposure to excessive sound pressures from headphones or earphones.</p> <p>NOTE Z1 A new method of measurement is described in EN 50332-1, Sound system equipment:</p> <p>Headphones and earphones associated with portable audio equipment - Maximum sound pressure level measurement methodology and limit considerations - Part 1: General method for “one package equipment”, and in EN 50332-2, Sound system equipment: Headphones and earphones associated with portable audio equipment - Maximum sound pressure level measurement methodology and limit considerations - Part 2: Guidelines to associate sets with headphones coming from different manufacturers.</p>		N
1.7.2.1	<p>In EN 60950-1:2006/A12:2011</p> <p>Delete NOTE Z1 and the addition for Portable Sound System.</p> <p>Add the following clause and annex to the existing standard and amendments.</p>		N
	Zx Protection against excessive sound pressure from personal music players		N






EN 60950-1			
Clause	Requirement	Remark	Result
	<p><b>Zx.1 General</b></p> <p>This sub-clause specifies requirements for protection against excessive sound pressure from personal music players that are closely coupled to the ear. It also specifies requirements for earphones and headphones intended for use with personal music players.</p> <p>A personal music player is a portable equipment for personal use, that: is designed to allow the user to listen to recorded or broadcast sound or video; and primarily uses headphones or earphones that can be worn in or on or around the ears; and allows the user to walk around while in use.</p> <p>NOTE 1 Examples are hand-held or body-worn portable CD players, MP3 audio players, mobile phones with MP3 type features, PDA's or similar equipment.</p> <p>A personal music player and earphones or headphones intended to be used with personal music players shall comply with the requirements of this sub-clause.</p> <p>The requirements in this sub-clause are valid for music or video mode only.</p> <p>The requirements do not apply: while the personal music player is connected to an external amplifier; or while the headphones or earphones are not used.</p> <p>NOTE 2 An external amplifier is an amplifier which is not part of the personal music player or the listening device, but which is intended to play the music as a standalone music player.</p> <p>The requirements do not apply to: hearing aid equipment and professional equipment;</p> <p>NOTE 3 Professional equipment is equipment sold through special sales channels. All products sold through normal electronics stores are considered not to be professional equipment.</p>		N



EN 60950-1			
Clause	Requirement	Remark	Result
	<p>analogue personal music players (personal music players without any kind of digital processing of the sound signal) that are brought to the market before the end of 2015.</p> <p>NOTE 4 This exemption has been allowed because this technology is falling out of use and it is expected that within a few years it will no longer exist. This exemption will not be extended to other technologies.</p> <p>For equipment which is clearly designed or intended for use by young children, the limits of EN 71-1 apply.</p>		N
	<p><b>Zx.2 Equipment requirements</b></p> <p>No safety provision is required for equipment that complies with the following: equipment provided as a package (personal music player with its listening device), where the acoustic output LAeq,T is <math>\leq 85</math> dBA measured while playing the fixed “programme simulation noise” as described in EN 50332-1; and a personal music player provided with an analogue electrical output socket for a listening device, where the electrical output is <math>\leq 27</math> mV measured as described in EN 50332-2, while playing the fixed “programme simulation noise” as described in EN 50332-1.</p> <p>NOTE 1 Wherever the term acoustic output is used in this clause, the 30 s A-weighted equivalent sound pressure level LAeq,T is meant. See also Zx.5 and Annex Zx.</p> <p>All other equipment shall:</p> <p>a) protect the user from unintentional acoustic outputs exceeding those mentioned above; and</p> <p>b) have a standard acoustic output level not exceeding those mentioned above, and automatically return to an output level not exceeding those mentioned above when the power is switched off; and</p>		N



EN 60950-1			
Clause	Requirement	Remark	Result
	<p>c) provide a means to actively inform the user of the increased sound pressure when the equipment is operated with an acoustic output exceeding those mentioned above. Any means used shall be acknowledged by the user before activating a mode of operation which allows for an acoustic output exceeding those mentioned above. The acknowledgement does not need to be repeated more than once every 20 h of cumulative listening time; and</p> <p>NOTE 2 Examples of means include visual or audible signals. Action from the user is always required.</p> <p>NOTE 3 The 20 h listening time is the accumulative listening time, independent how often and how long the personal music player has been switched off.</p> <p>d) have a warning as specified in Zx.3; and</p> <p>e) not exceed the following:</p> <ol style="list-style-type: none"> <li>1) equipment provided as a package (player with its listening device), the acoustic output shall be <math>\leq 100</math> dBA measured while playing the fixed "programme simulation noise" described in EN 50332-1; and</li> <li>2) a personal music player provided with an analogue electrical output socket for a listening device, the electrical output shall be <math>\leq 150</math> mV measured as described in EN 50332-2, while playing the fixed "programme simulation noise" described in EN 50332-1.</li> </ol> <p>For music where the average sound pressure (long term LAeq,T) measured over the duration of the song is lower than the average produced by the programme simulation noise, the warning does not need to be given as long as the average sound pressure of the song is below the basic limit of 85 dBA. In this case T becomes the duration of the song.</p> <p>NOTE 4 Classical music typically has an average sound pressure (long term LAeq,T) which is much lower than the average programme simulation noise. Therefore, if the player is capable to analyse the song and compare it with the programme simulation noise, the warning does not need to be given as long as the average sound pressure of the song is below the basic limit of 85 dBA.</p> <p>For example, if the player is set with the programme simulation noise to 85 dBA, but the average music level of the song is only 65 dBA, there is no need to give a warning or ask an acknowledgement as long as the average sound level of the song is not above the basic limit of 85 dBA.</p>		N

EN 60950-1			
Clause	Requirement	Remark	Result
	<p><b>Zx.3 Warning</b></p> <p>The warning shall be placed on the equipment, or on the packaging, or in the instruction manual and shall consist of the following:</p> <ul style="list-style-type: none"> <li>the symbol of Figure 1 with a minimum height of 5 mm; and</li> <li>the following wording, or similar:</li> </ul> <p>“To prevent possible hearing damage, do not listen at high volume levels for long periods.”</p>  <p style="text-align: center;"><b>Figure 1 – Warning label (IEC 60417-6044)</b></p> <p>Alternatively, the entire warning may be given through the equipment display during use, when the user is asked to acknowledge activation of the higher level.</p>		N
	<p><b>Zx.4 Requirements for listening devices (headphones and earphones)</b></p>		-
	<p><b>Zx.4.1 Wired listening devices with analogue input</b></p> <p>With 94 dBA sound pressure output LAeq,T, the input voltage of the fixed “programme simulation noise” described in EN 50332-2 shall be <math>\geq 75</math> mV.</p> <p>This requirement is applicable in any mode where the headphones can operate (active or passive), including any available setting (for example built-in volume level control).</p> <p>NOTE The values of 94 dBA – 75 mV correspond with 85dBA – 27 mV and 100 dBA – 150 mV.</p>		N
	<p><b>Zx.4.2 Wired listening devices with digital input</b></p> <p>With any playing device playing the fixed “programme simulation noise” described in EN 50332-1 (and respecting the digital interface standards, where a digital interface standard exists that specifies the equivalent acoustic level), the acoustic output LAeq,T of the listening device shall be <math>\leq 100</math> dBA.</p> <p>This requirement is applicable in any mode where the headphones can operate, including any available setting (for example built-in volume level control, additional sound feature like equalization, etc.).</p> <p>NOTE An example of a wired listening device with digital input is a USB headphone.</p>		N



EN 60950-1			
Clause	Requirement	Remark	Result
	<p><b>Zx.4.3 Wireless listening devices</b></p> <p>In wireless mode:</p> <ul style="list-style-type: none"><li>with any playing and transmitting device playing the fixed programme simulation noise described in EN 50332-1; and</li><li>respecting the wireless transmission standards, where an air interface standard exists that specifies the equivalent acoustic level; and</li><li>with volume and sound settings in the listening device (for example built-in volume level control, additional sound feature like equalization, etc.) set to the combination of positions that maximize the measured acoustic output for the above mentioned programme simulation noise, the acoustic output LAeq,T of the listening device shall be <math>\leq 100</math> dBA.</li></ul> <p>NOTE An example of a wireless listening device is a Bluetooth headphone.</p>		N
	<p><b>Zx.5 Measurement methods</b></p> <p>Measurements shall be made in accordance with EN 50332-1 or EN 50332-2 as applicable. Unless stated otherwise, the time interval T shall be 30 s.</p> <p>NOTE Test method for wireless equipment provided without listening device should be defined.</p>		N



1.5.1	TABLE: List of critical components					P
Object/part no.	Manufacturer/ trademark	Type/model	Value/rating	Standard	Mark(s) of conformity <sup>1)</sup>	
External adaptor	EYE	GQ150-480250-E 1	Input: 100-240VAC~ 50/60Hz 2.0A max Output: DC48V 2.5A	EN 60950-1	CE	
PCB	interchangeable	interchangeable	94V-0, 130°C	UL 94	UL	
Internal wire	HONGY-A	1007	300V VW-1 80°C 18AWG	UL 758	UL	
Fan	SUNON	HA4010V4-000C	DC12V 0.8W	--	UL	
Power switch	CNXLE	XL001	6A 250VAC 10A 125VAC	EN 61058-1	VDE	
DC jack	Changchun Plastic Co.,Ltd	4815	Rated V-0, 75°C,	--	UL	
Surveillance hard drive	WD	WD10PURX	1.0TB 5VDC:0.70A 12VDC:0.55A	--	CE	
<sup>1)</sup> An asterisk indicates a mark which assures the agreed level of surveillance Supplementary information:						

1.6.2	TABLE: electrical data (in normal conditions)					P
fuse #	Irated (mA)	U ( V dc )	P (W)	I (mA)	Ifuse (A)	condition/status
--	2500mA	48	--	440	--	Normal operation (Supplied by adapter)
Supplementary information:						

4.5	TABLE: Thermal requirements					P
	Supply voltage (V) .....	DC48V	-	-	-	—
	Ambient T <sub>min</sub> (°C) .....	24.4	-	-	-	—
	Ambient T <sub>max</sub> (°C) .....	24.8	-	-	-	—
Maximum measured temperature T of part/at::			T (°C)			Allowed T <sub>max</sub> (°C)
Enclosure			39.4	-	-	70



Power switch	29.7	-	-	-	-	50	
DC jack	27.2	-	-	-	-	75	
Body of external adaptor	49.2	-	-	-	-	Ref.	
Internal wire	29.8	-	-	-	-	80	
PCB near U2	59.2	-	-	-	-	130	
C287 body	53.8	-	-	-	-	105	
PCB near T1	64.3	-	-	-	-	130	
C350 body	56.8	-	-	-	-	105	
Supplementary information:-							
Temperature T of winding:	t <sub>1</sub> (°C)	R <sub>1</sub> (Ω)	t <sub>2</sub> (°C)	R <sub>2</sub> (Ω)	T (°C)	Allowed T <sub>max</sub> (°C)	Insulation class
--							
Supplementary information: T <sub>mra</sub> = 25°C. If no limit is stated, temperature is for reference only.							

5.3	TABLE: Fault condition tests					P
	Ambient temperature (°C) .....			24.8		—
	Power source for EUT: Manufacturer, model/type, output rating .....			-		—
Component No.	Fault	Supply voltage (V)	Test time	Fuse #	Fuse current (A)	Observation
C287	S-C	48VDC	30mins	--	--	Unit shut down, no damage, no hazard.
C350	S-C	48VDC	30mins	--	--	Unit shut down, no damage, no hazard.
Output	S-C	48VDC	30mins	--	--	Unit shut down, no damage, no hazard.
Supplementary information:S-C=short circuit, O-C=open circuit, O-L=over load.						



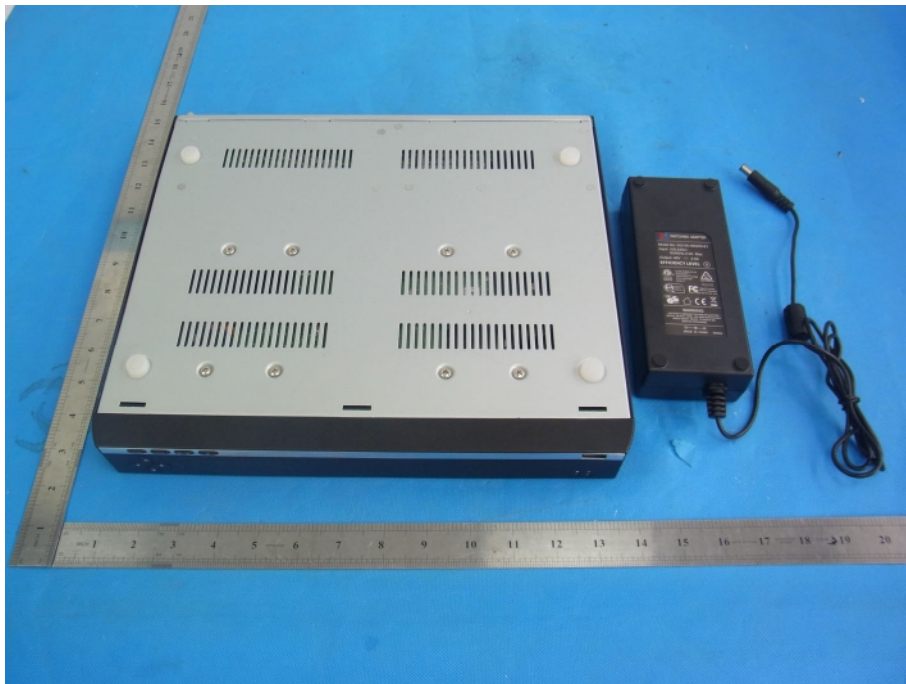
**ANNEX A:**  
**Photo-documentation**



EUT Photo 1



EUT Photo 2



**EUT Photo 3**



**EUT Photo 4**

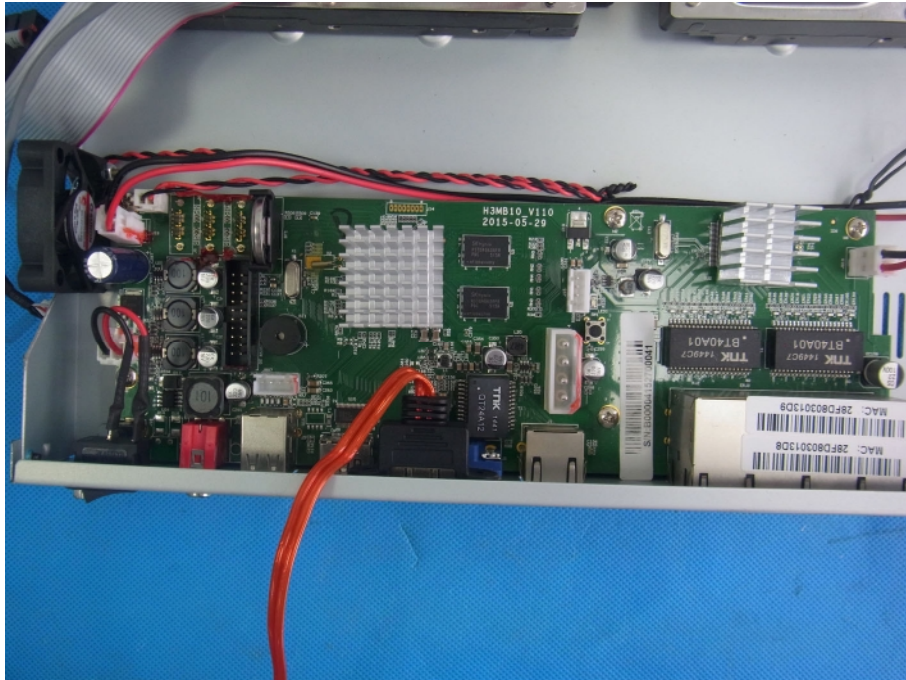




EUT Photo 5



EUT Photo 6



\*\*\*\*\* END OF REPORT \*\*\*\*\*