



# Verification Report

No.: ESTSZ141202203R

Date: Dec. 05, 2014

Page 1 of 31

NUUO INC.

B1, NO. 207-1, SEC. 3, BEIXIN RD., XINDIAN DIST., NEW TAIPEI CITY 231, TAIWAN

REPORT ON THE SUBMITTED SAMPLE SAID TO BE:

Sample Description : NETWORK VIDEO RECORDER  
Model No. (P.O No.) : NC-2xx0, NVC-2xx0, (xx = 00, 02, 04, 06, 08, 10, 12, 14, 16)  
Verification Period : Dec. 03, 2014 to Dec. 05, 2014

Verification Requested : As specified by client, to determine the Lead, Cadmium, Mercury, Hexavalent Chromium, PBBs & PBDEs content in the submitted sample in accordance with RoHS Directive 2011/65/EU Annex II; recasting 2002/95/EC

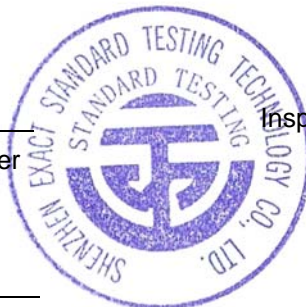
Verification Method : Tests was performed for the samples indicated by the photo in the report with test methods reference to IEC 62321:2008: Procedures for the Determination of Levels of Six Regulated substances in Electrotechnical Products  
1) Screening by XRF Spectroscopy  
2) Wet Chemical Test Method  
a. Determination of Lead & Cadmium & Mercury by ICP and AAS  
b. Determination of Hexavalent Chromium by Colorimetric Method  
c. Determination of PBBs and PBDEs by GC/MS.

Verification Results : Please refer to next page

Verification Conclusion : Based on the review of previous reports and verification results of the submitted samples, the results comply with the RoHS Directive 2011/65/EU

Signed for and on behalf of  
SHENZHEN EXACT STANDARD TESTING TECHNOLOGY CO., LTD.

Compiled by Anna Zhu  
Anna Zhu / Project Engineer



Inspected by Sunny He  
Sunny He / Dept. Manager

Approved Charles Liu  
Charles Liu / Sr. Manager





# Verification Report

No.: ESTSZ141202203R

Date: Dec. 05, 2014

Page 2 of 31

## TEST RESULTS:

Part No.	Part Name	Restricted substances	Results of EDXRF <sup>(1)</sup>	No. of Related Test Report	Results in Related Test Report (mg/kg)	Result of Wet Chemical Testing <sup>(2)</sup> (mg/kg)	Conclusion on RoHS
1	Black metal shell (enclosure)	Cd	BL	\	\	\	Comply
		Pb	BL		\	\	Comply
		Hg	BL		\	\	Comply
		Cr <sup>6+</sup>	IN		\	Negative	Comply
		PBBs	---		\	\	---
		PBDEs	---		\	\	---
2	Silvery metal shell	Cd	BL	\	\	\	Comply
		Pb	BL		\	\	Comply
		Hg	BL		\	\	Comply
		Cr <sup>6+</sup>	IN		\	Negative	Comply
		PBBs	---		\	\	---
		PBDEs	---		\	\	---
3	Black plastic	Cd	BL	\	\	\	Comply
		Pb	BL		\	\	Comply
		Hg	BL		\	\	Comply
		Cr <sup>6+</sup>	BL		\	\	Comply
		PBBs	BL		\	\	Comply
		PBDEs	BL		\	\	Comply
4	Silvery metal screw	Cd	BL	\	\	\	Comply
		Pb	BL		\	\	Comply
		Hg	BL		\	\	Comply
		Cr <sup>6+</sup>	BL		\	\	Comply
		PBBs	---		\	\	---
		PBDEs	---		\	\	---
5-1	Silvery metal shell	Cd	BL	\	\	\	Comply
		Pb	BL		\	\	Comply
		Hg	BL		\	\	Comply
		Cr <sup>6+</sup>	BL		\	\	Comply
		PBBs	---		\	\	---
		PBDEs	---		\	\	---
5-2	Black plastic holder (in No. 5-1)	Cd	BL	\	\	\	Comply
		Pb	BL		\	\	Comply
		Hg	BL		\	\	Comply
		Cr <sup>6+</sup>	BL		\	\	Comply
		PBBs	BL		\	\	Comply
		PBDEs	BL		\	\	Comply
5-3	Silvery metal pin(in No.5-1)	Cd	BL	\	\	\	Comply
		Pb	BL		\	\	Comply
		Hg	BL		\	\	Comply
		Cr <sup>6+</sup>	BL		\	\	Comply
		PBBs	---		\	\	---
		PBDEs	---		\	\	---





# Verification Report

No.: ESTSZ141202203R

Date: Dec. 05, 2014

Page 3 of 31

Part No.	Part Name	Restricted substances	Results of EDXRF <sup>(1)</sup>	No. of Related Test Report	Results in Related Test Report (mg/kg)	Result of Wet Chemical Testing <sup>(2)</sup> (mg/kg)	Conclusion on RoHS
5-4	Yellow body w/ silvery metal pin (mixed) (LED)	Cd	BL	\	\	\	Comply
		Pb	BL		\	\	Comply
		Hg	BL		\	\	Comply
		Cr <sup>6+</sup>	BL		\	\	Comply
		PBBs	BL		\	\	Comply
		PBDEs			\	\	Comply
5-5	Green body w/ silvery metal pin (mixed) (LED)	Cd	BL	\	\	\	Comply
		Pb	BL		\	\	Comply
		Hg	BL		\	\	Comply
		Cr <sup>6+</sup>	BL		\	\	Comply
		PBBs	BL		\	\	Comply
		PBDEs			\	\	Comply
6-1	Blue plastic holder (VGA port)	Cd	BL	\	\	\	Comply
		Pb	BL		\	\	Comply
		Hg	BL		\	\	Comply
		Cr <sup>6+</sup>	BL		\	\	Comply
		PBBs	IN		\	N.D.	Comply
		PBDEs			\	N.D.	Comply
6-2	Silvery metal cover (on No.6-1)	Cd	BL	\	\	\	Comply
		Pb	BL		\	\	Comply
		Hg	BL		\	\	Comply
		Cr <sup>6+</sup>	BL		\	\	Comply
		PBBs	---		\	\	---
		PBDEs			\	\	---
6-3	Silvery metal pin (in No.6-1)	Cd	BL	\	\	\	Comply
		Pb	BL		\	\	Comply
		Hg	BL		\	\	Comply
		Cr <sup>6+</sup>	BL		\	\	Comply
		PBBs	---		\	\	---
		PBDEs			\	\	---
7	Black solid w/ silvery edge	Cd	BL	\	\	\	Comply
		Pb	BL		\	\	Comply
		Hg	BL		\	\	Comply
		Cr <sup>6+</sup>	BL		\	\	Comply
		PBBs	BL		\	\	Comply
		PBDEs			\	\	Comply
8	Black solid w/ silvery edge	Cd	BL	\	\	\	Comply
		Pb	BL		\	\	Comply
		Hg	BL		\	\	Comply
		Cr <sup>6+</sup>	BL		\	\	Comply
		PBBs	BL		\	\	Comply
		PBDEs			\	\	Comply





# Verification Report

No.: ESTSZ141202203R

Date: Dec. 05, 2014

Page 4 of 31

Part No.	Part Name	Restricted substances	Results of EDXRF <sup>(1)</sup>	No. of Related Test Report	Results in Related Test Report (mg/kg)	Result of Wet Chemical Testing <sup>(2)</sup> (mg/kg)	Conclusion on RoHS
9	Black solid w/ silvery edge	Cd	BL	\	\	\	Comply
		Pb	BL		\	\	Comply
		Hg	BL		\	\	Comply
		Cr <sup>6+</sup>	BL		\	\	Comply
		PBBs	BL		\	\	Comply
		PBDEs			\	\	Comply
10	Silvery body w/ silvery metal pin (mixed) (Crystal oscillator)	Cd	BL	\	\	\	Comply
		Pb	BL		\	\	Comply
		Hg	BL		\	\	Comply
		Cr <sup>6+</sup>	BL		\	\	Comply
		PBBs	BL		\	\	Comply
		PBDEs			\	\	Comply
11	Brown solid w/ silvery edge	Cd	BL	\	\	\	Comply
		Pb	BL		\	\	Comply
		Hg	BL		\	\	Comply
		Cr <sup>6+</sup>	BL		\	\	Comply
		PBBs	BL		\	\	Comply
		PBDEs			\	\	Comply
12	Black solid w/ silvery edge	Cd	BL	\	\	\	Comply
		Pb	BL		\	\	Comply
		Hg	BL		\	\	Comply
		Cr <sup>6+</sup>	BL		\	\	Comply
		PBBs	BL		\	\	Comply
		PBDEs			\	\	Comply
13-1	Gray solid (inductance)	Cd	BL	\	\	\	Comply
		Pb	BL		\	\	Comply
		Hg	BL		\	\	Comply
		Cr <sup>6+</sup>	BL		\	\	Comply
		PBBs	---		\	\	---
		PBDEs			\	\	---
13-2	Coppery winding (in No. 13-1)	Cd	BL	\	\	\	Comply
		Pb	BL		\	\	Comply
		Hg	BL		\	\	Comply
		Cr <sup>6+</sup>	BL		\	\	Comply
		PBBs	BL		\	\	Comply
		PBDEs			\	\	Comply
13-3	Silvery metal pin (on No. 13-1)	Cd	BL	\	\	\	Comply
		Pb	BL		\	\	Comply
		Hg	BL		\	\	Comply
		Cr <sup>6+</sup>	BL		\	\	Comply
		PBBs	---		\	\	---
		PBDEs			\	\	---





# Verification Report

No.: ESTSZ141202203R

Date: Dec. 05, 2014

Page 5 of 31

Part No.	Part Name	Restricted substances	Results of EDXRF <sup>(1)</sup>	No. of Related Test Report	Results in Related Test Report (mg/kg)	Result of Wet Chemical Testing <sup>(2)</sup> (mg/kg)	Conclusion on RoHS
14	Black solid w/ silvery edge	Cd	BL	\	\	\	Comply
		Pb	BL		\	\	Comply
		Hg	BL		\	\	Comply
		Cr <sup>6+</sup>	BL		\	\	Comply
		PBBs	BL		\	\	Comply
		PBDEs			\	\	Comply
15-1	Silvery metal shell	Cd	BL	\	\	\	Comply
		Pb	BL		\	\	Comply
		Hg	BL		\	\	Comply
		Cr <sup>6+</sup>	BL		\	\	Comply
		PBBs	---		\	\	---
		PBDEs			\	\	---
15-2	Black plastic holder (in No. 15-1)	Cd	BL	\	\	\	Comply
		Pb	BL		\	\	Comply
		Hg	BL		\	\	Comply
		Cr <sup>6+</sup>	BL		\	\	Comply
		PBBs	BL		\	\	Comply
		PBDEs			\	\	Comply
15-3	Silvery metal pin(in No.15-1)	Cd	BL	\	\	\	Comply
		Pb	BL		\	\	Comply
		Hg	BL		\	\	Comply
		Cr <sup>6+</sup>	BL		\	\	Comply
		PBBs	---		\	\	---
		PBDEs			\	\	---
16	Black solid w/ silvery edge	Cd	BL	\	\	\	Comply
		Pb	BL		\	\	Comply
		Hg	BL		\	\	Comply
		Cr <sup>6+</sup>	BL		\	\	Comply
		PBBs	BL		\	\	Comply
		PBDEs			\	\	Comply
17	Black solid w/ silvery edge	Cd	BL	\	\	\	Comply
		Pb	BL		\	\	Comply
		Hg	BL		\	\	Comply
		Cr <sup>6+</sup>	BL		\	\	Comply
		PBBs	BL		\	\	Comply
		PBDEs			\	\	Comply
18	Green "PCB"	Cd	BL	\	\	\	Comply
		Pb	BL		\	\	Comply
		Hg	BL		\	\	Comply
		Cr <sup>6+</sup>	BL		\	\	Comply
		PBBs	BL		\	\	Comply
		PBDEs			\	\	Comply





# Verification Report

No.: ESTSZ141202203R

Date: Dec. 05, 2014

Page 6 of 31

Part No.	Part Name	Restricted substances	Results of EDXRF <sup>(1)</sup>	No. of Related Test Report	Results in Related Test Report (mg/kg)	Result of Wet Chemical Testing <sup>(2)</sup> (mg/kg)	Conclusion on RoHS
19-1	Black plastic (connector)	Cd	BL	\	\	\	Comply
		Pb	BL		\	\	Comply
		Hg	BL		\	\	Comply
		Cr <sup>6+</sup>	BL		\	\	Comply
		PBBs	BL		\	\	Comply
		PBDEs			\	\	Comply
19-2	Silvery metal pin (in No.19-1)	Cd	BL	\	\	\	Comply
		Pb	BL		\	\	Comply
		Hg	BL		\	\	Comply
		Cr <sup>6+</sup>	BL		\	\	Comply
		PBBs	---		\	\	---
		PBDEs			\	\	---
20-1	Silvery meta sheet (Heat sink)	Cd	BL	\	\	\	Comply
		Pb	BL		\	\	Comply
		Hg	BL		\	\	Comply
		Cr <sup>6+</sup>	BL		\	\	Comply
		PBBs	---		\	\	---
		PBDEs			\	\	---
20-2	Black solid w/ silvery metal edge (IC) (under No.20-1)	Cd	BL	\	\	\	Comply
		Pb	BL		\	\	Comply
		Hg	BL		\	\	Comply
		Cr <sup>6+</sup>	BL		\	\	Comply
		PBBs	BL		\	\	Comply
		PBDEs			\	\	Comply
21-1	Silvery metal cover (USB)	Cd	BL	\	\	\	Comply
		Pb	BL		\	\	Comply
		Hg	BL		\	\	Comply
		Cr <sup>6+</sup>	IN		\	Negative	Comply
		PBBs	---		\	\	---
		PBDEs			\	\	---
21-2	White plastic sheet(in No. 21-1)	Cd	BL	\	\	\	Comply
		Pb	BL		\	\	Comply
		Hg	BL		\	\	Comply
		Cr <sup>6+</sup>	BL		\	\	Comply
		PBBs	IN		\	N.D.	Comply
		PBDEs			\	N.D.	Comply
21-3	Coppery metal pin (in No. 21-1)	Cd	BL	\	\	\	Comply
		Pb	BL		\	\	Comply
		Hg	BL		\	\	Comply
		Cr <sup>6+</sup>	BL		\	\	Comply
		PBBs	---		\	\	---
		PBDEs			\	\	---





# Verification Report

No.: ESTSZ141202203R

Date: Dec. 05, 2014

Page 7 of 31

Part No.	Part Name	Restricted substances	Results of EDXRF <sup>(1)</sup>	No. of Related Test Report	Results in Related Test Report (mg/kg)	Result of Wet Chemical Testing <sup>(2)</sup> (mg/kg)	Conclusion on RoHS
22	Black solid w/ silvery edge	Cd	BL	\	\	\	Comply
		Pb	BL		\	\	Comply
		Hg	BL		\	\	Comply
		Cr <sup>6+</sup>	BL		\	\	Comply
		PBBs	BL		\	\	Comply
		PBDEs			\	\	Comply
23	Black solid w/ silvery edge	Cd	BL	\	\	\	Comply
		Pb	BL		\	\	Comply
		Hg	BL		\	\	Comply
		Cr <sup>6+</sup>	BL		\	\	Comply
		PBBs	BL		\	\	Comply
		PBDEs			\	\	Comply
24-1	Silvery metal w/ black plastic (E-capacitor)	Cd	BL	\	\	\	Comply
		Pb	BL		\	\	Comply
		Hg	BL		\	\	Comply
		Cr <sup>6+</sup>	IN		\	Negative	Comply
		PBBs	BL		\	\	Comply
		PBDEs			\	\	Comply
24-2	Black rubber (in No. 24-1)	Cd	BL	\	\	\	Comply
		Pb	BL		\	\	Comply
		Hg	BL		\	\	Comply
		Cr <sup>6+</sup>	BL		\	\	Comply
		PBBs	BL		\	\	Comply
		PBDEs			\	\	Comply
24-3	Lt-brown paper w/ liquid (in No.24-1)	Cd	BL	\	\	\	Comply
		Pb	BL		\	\	Comply
		Hg	BL		\	\	Comply
		Cr <sup>6+</sup>	BL		\	\	Comply
		PBBs	BL		\	\	Comply
		PBDEs			\	\	Comply
24-4	Grey metal foil (in No. 24-1)	Cd	BL	\	\	\	Comply
		Pb	BL		\	\	Comply
		Hg	BL		\	\	Comply
		Cr <sup>6+</sup>	BL		\	\	Comply
		PBBs	---		\	\	---
		PBDEs			\	\	---
24-5	Silvery metal pin (in No. 24-1)	Cd	BL	\	\	\	Comply
		Pb	BL		\	\	Comply
		Hg	BL		\	\	Comply
		Cr <sup>6+</sup>	BL		\	\	Comply
		PBBs	---		\	\	---
		PBDEs			\	\	---





# Verification Report

No.: ESTSZ141202203R

Date: Dec. 05, 2014

Page 8 of 31

Part No.	Part Name	Restricted substances	Results of EDXRF <sup>(1)</sup>	No. of Related Test Report	Results in Related Test Report (mg/kg)	Result of Wet Chemical Testing <sup>(2)</sup> (mg/kg)	Conclusion on RoHS
25-1	Gray solid (inductance)	Cd	BL	\	\	\	Comply
		Pb	BL		\	\	Comply
		Hg	BL		\	\	Comply
		Cr <sup>6+</sup>	BL		\	\	Comply
		PBBs	---		\	\	---
		PBDEs	---		\	\	---
25-2	Copper winding (in No. 25-1)	Cd	BL	\	\	\	Comply
		Pb	BL		\	\	Comply
		Hg	BL		\	\	Comply
		Cr <sup>6+</sup>	BL		\	\	Comply
		PBBs	BL		\	\	Comply
		PBDEs	BL		\	\	Comply
25-3	Silvery metal pin (on No. 25-1)	Cd	BL	\	\	\	Comply
		Pb	BL		\	\	Comply
		Hg	BL		\	\	Comply
		Cr <sup>6+</sup>	BL		\	\	Comply
		PBBs	---		\	\	---
		PBDEs	---		\	\	---
26-1	Gray solid (inductance)	Cd	BL	\	\	\	Comply
		Pb	BL		\	\	Comply
		Hg	BL		\	\	Comply
		Cr <sup>6+</sup>	BL		\	\	Comply
		PBBs	---		\	\	---
		PBDEs	---		\	\	---
26-2	Copper winding (in No. 26-1)	Cd	BL	\	\	\	Comply
		Pb	BL		\	\	Comply
		Hg	BL		\	\	Comply
		Cr <sup>6+</sup>	BL		\	\	Comply
		PBBs	BL		\	\	Comply
		PBDEs	BL		\	\	Comply
26-3	Copper winding (on No. 26-1)	Cd	BL	\	\	\	Comply
		Pb	BL		\	\	Comply
		Hg	BL		\	\	Comply
		Cr <sup>6+</sup>	BL		\	\	Comply
		PBBs	---		\	\	---
		PBDEs	---		\	\	---
27	Black solid w/ silvery edge	Cd	BL	\	\	\	Comply
		Pb	BL		\	\	Comply
		Hg	BL		\	\	Comply
		Cr <sup>6+</sup>	BL		\	\	Comply
		PBBs	BL		\	\	Comply
		PBDEs	BL		\	\	Comply







# Verification Report

No.: ESTSZ141202203R

Date: Dec. 05, 2014

Page 9 of 31

Part No.	Part Name	Restricted substances	Results of EDXRF <sup>(1)</sup>	No. of Related Test Report	Results in Related Test Report (mg/kg)	Result of Wet Chemical Testing <sup>(2)</sup> (mg/kg)	Conclusion on RoHS
28	Black solid w/ silvery edge	Cd	BL	\	\	\	Comply
		Pb	BL		\	\	Comply
		Hg	BL		\	\	Comply
		Cr <sup>6+</sup>	BL		\	\	Comply
		PBBs	BL		\	\	Comply
		PBDEs			\	\	Comply
29-1	Silvery metal	Cd	BL	\	\	\	Comply
		Pb	BL		\	\	Comply
		Hg	BL		\	\	Comply
		Cr <sup>6+</sup>	IN		\	Negative	Comply
		PBBs	---		\	\	---
		PBDEs			\	\	---
29-2	Red plastic (in No.29-1)	Cd	BL	\	\	\	Comply
		Pb	BL		\	\	Comply
		Hg	BL		\	\	Comply
		Cr <sup>6+</sup>	BL		\	\	Comply
		PBBs	BL		\	\	Comply
		PBDEs			\	\	Comply
29-3	Silvery metal pin (in No.29-1)	Cd	BL	\	\	\	Comply
		Pb	BL		\	\	Comply
		Hg	BL		\	\	Comply
		Cr <sup>6+</sup>	BL		\	\	Comply
		PBBs	---		\	\	---
		PBDEs			\	\	---
30-1	Black plastic holder (DC port)	Cd	BL	\	\	\	Comply
		Pb	BL		\	\	Comply
		Hg	BL		\	\	Comply
		Cr <sup>6+</sup>	BL		\	\	Comply
		PBBs	BL		\	\	Comply
		PBDEs			\	\	Comply
30-2	Coppery contact sheet (in No.30-1)	Cd	BL	\	\	\	Comply
		Pb	BL		\	\	Comply
		Hg	BL		\	\	Comply
		Cr <sup>6+</sup>	BL		\	\	Comply
		PBBs	---		\	\	---
		PBDEs			\	\	---
30-3	Silver-grey metal steel (in No.30-1)	Cd	BL	\	\	\	Comply
		Pb	BL		\	\	Comply
		Hg	BL		\	\	Comply
		Cr <sup>6+</sup>	BL		\	\	Comply
		PBBs	---		\	\	---
		PBDEs			\	\	---





# Verification Report

No.: ESTSZ141202203R

Date: Dec. 05, 2014

Page 10 of 31

Part No.	Part Name	Restricted substances	Results of EDXRF <sup>(1)</sup>	No. of Related Test Report	Results in Related Test Report (mg/kg)	Result of Wet Chemical Testing <sup>(2)</sup> (mg/kg)	Conclusion on RoHS
31	Black solid w/ silvery edge	Cd	BL	\	\	\	Comply
		Pb	BL		\	\	Comply
		Hg	BL		\	\	Comply
		Cr <sup>6+</sup>	BL		\	\	Comply
		PBBs	BL		\	\	Comply
		PBDEs			\	\	Comply
32-1	Black plastic shell (buzzer)	Cd	BL	\	\	\	Comply
		Pb	BL		\	\	Comply
		Hg	BL		\	\	Comply
		Cr <sup>6+</sup>	BL		\	\	Comply
		PBBs	BL		\	\	Comply
		PBDEs			\	\	Comply
32-2	Silvery metal sheet (in No. 32-1)	Cd	BL	\	\	\	Comply
		Pb	BL		\	\	Comply
		Hg	BL		\	\	Comply
		Cr <sup>6+</sup>	BL		\	\	Comply
		PBBs	---		\	\	---
		PBDEs			\	\	---
33	Silvery body w/ silvery metal pin (mixed) (Crystal oscillator)	Cd	BL	\	\	\	Comply
		Pb	BL		\	\	Comply
		Hg	BL		\	\	Comply
		Cr <sup>6+</sup>	BL		\	\	Comply
		PBBs	BL		\	\	Comply
		PBDEs			\	\	Comply
34-1	Black plastic (battery holder)	Cd	BL	\	\	\	Comply
		Pb	BL		\	\	Comply
		Hg	BL		\	\	Comply
		Cr <sup>6+</sup>	BL		\	\	Comply
		PBBs	BL		\	\	Comply
		PBDEs			\	\	Comply
34-2	Silver metal sheet (in No.34-1)	Cd	BL	\	\	\	Comply
		Pb	BL		\	\	Comply
		Hg	BL		\	\	Comply
		Cr <sup>6+</sup>	IN		\	Negative	Comply
		PBBs	---		\	\	---
		PBDEs			\	\	---
34-3	Silvery button batteries (mixed)	Cd	BL	\	\	\	Comply
		Pb	BL		\	\	Comply
		Hg	BL		\	\	Comply
		Cr <sup>6+</sup>	---		\	\	---
		PBBs	---		\	\	---
		PBDEs			\	\	---





# Verification Report

No.: ESTSZ141202203R

Date: Dec. 05, 2014

Page 11 of 31

Part No.	Part Name	Restricted substances	Results of EDXRF <sup>(1)</sup>	No. of Related Test Report	Results in Related Test Report (mg/kg)	Result of Wet Chemical Testing <sup>(2)</sup> (mg/kg)	Conclusion on RoHS
35	Silvery metal pin	Cd	BL	\	\	\	Comply
		Pb	BL		\	\	Comply
		Hg	BL		\	\	Comply
		Cr <sup>6+</sup>	---		\	\	---
		PBBs	---		\	\	---
		PBDEs	---		\	\	---
36-1	Green plastic w/ yellow printing (E-capacitor)	Cd	BL	\	\	\	Comply
		Pb	BL		\	\	Comply
		Hg	BL		\	\	Comply
		Cr <sup>6+</sup>	BL		\	\	Comply
		PBBs	BL		\	\	Comply
		PBDEs	BL		\	\	Comply
36-2	Black rubber (in No. 36-1)	Cd	BL	\	\	\	Comply
		Pb	BL		\	\	Comply
		Hg	BL		\	\	Comply
		Cr <sup>6+</sup>	BL		\	\	Comply
		PBBs	BL		\	\	Comply
		PBDEs	BL		\	\	Comply
36-3	Lt-brown paper w/ liquid (in No. 36-1)	Cd	BL	\	\	\	Comply
		Pb	BL		\	\	Comply
		Hg	BL		\	\	Comply
		Cr <sup>6+</sup>	BL		\	\	Comply
		PBBs	BL		\	\	Comply
		PBDEs	BL		\	\	Comply
36-4	Silvery metal shell (in No.36-1)	Cd	BL	\	\	\	Comply
		Pb	BL		\	\	Comply
		Hg	BL		\	\	Comply
		Cr <sup>6+</sup>	IN		\	Negative	Comply
		PBBs	---		\	\	---
		PBDEs	---		\	\	---
36-5	Grey metal foil (in No.36-1)	Cd	BL	\	\	\	Comply
		Pb	BL		\	\	Comply
		Hg	BL		\	\	Comply
		Cr <sup>6+</sup>	BL		\	\	Comply
		PBBs	---		\	\	---
		PBDEs	---		\	\	---
36-6	Silvery metal pin (in No. 36-1)	Cd	BL	\	\	\	Comply
		Pb	BL		\	\	Comply
		Hg	BL		\	\	Comply
		Cr <sup>6+</sup>	BL		\	\	Comply
		PBBs	---		\	\	---
		PBDEs	---		\	\	---





# Verification Report

No.: ESTSZ141202203R

Date: Dec. 05, 2014

Page 12 of 31

Part No.	Part Name	Restricted substances	Results of EDXRF <sup>(1)</sup>	No. of Related Test Report	Results in Related Test Report (mg/kg)	Result of Wet Chemical Testing <sup>(2)</sup> (mg/kg)	Conclusion on RoHS
37	Black solid w/ silvery edge	Cd	BL	\	\	\	Comply
		Pb	BL		\	\	Comply
		Hg	BL		\	\	Comply
		Cr <sup>6+</sup>	BL		\	\	Comply
		PBBs	BL		\	\	Comply
		PBDEs			\	\	Comply
38	White solid w/ silvery edge	Cd	BL	\	\	\	Comply
		Pb	BL		\	\	Comply
		Hg	BL		\	\	Comply
		Cr <sup>6+</sup>	BL		\	\	Comply
		PBBs	BL		\	\	Comply
		PBDEs			\	\	Comply
39	Brown solid w/ silvery edge	Cd	BL	\	\	\	Comply
		Pb	BL		\	\	Comply
		Hg	BL		\	\	Comply
		Cr <sup>6+</sup>	BL		\	\	Comply
		PBBs	BL		\	\	Comply
		PBDEs			\	\	Comply
40	Black solid w/ silvery edge	Cd	BL	\	\	\	Comply
		Pb	BL		\	\	Comply
		Hg	BL		\	\	Comply
		Cr <sup>6+</sup>	BL		\	\	Comply
		PBBs	BL		\	\	Comply
		PBDEs			\	\	Comply
41	Brown solid w/ silvery edge	Cd	BL	\	\	\	Comply
		Pb	BL		\	\	Comply
		Hg	BL		\	\	Comply
		Cr <sup>6+</sup>	BL		\	\	Comply
		PBBs	BL		\	\	Comply
		PBDEs			\	\	Comply
42	Green "PCB"	Cd	BL	\	\	\	Comply
		Pb	BL		\	\	Comply
		Hg	BL		\	\	Comply
		Cr <sup>6+</sup>	BL		\	\	Comply
		PBBs	BL		\	\	Comply
		PBDEs			\	\	Comply
43	White solid w/ silvery edge	Cd	BL	\	\	\	Comply
		Pb	BL		\	\	Comply
		Hg	BL		\	\	Comply
		Cr <sup>6+</sup>	BL		\	\	Comply
		PBBs	BL		\	\	Comply
		PBDEs			\	\	Comply





# Verification Report

No.: ESTSZ141202203R

Date: Dec. 05, 2014

Page 13 of 31

Part No.	Part Name	Restricted substances	Results of EDXRF <sup>(1)</sup>	No. of Related Test Report	Results in Related Test Report (mg/kg)	Result of Wet Chemical Testing <sup>(2)</sup> (mg/kg)	Conclusion on RoHS
44	Black solid w/ silvery edge	Cd	BL	\	\	\	Comply
		Pb	BL		\	\	Comply
		Hg	BL		\	\	Comply
		Cr <sup>6+</sup>	BL		\	\	Comply
		PBBs	BL		\	\	Comply
		PBDEs			\	\	Comply
45	Brown solid w/ silvery edge	Cd	BL	\	\	\	Comply
		Pb	BL		\	\	Comply
		Hg	BL		\	\	Comply
		Cr <sup>6+</sup>	BL		\	\	Comply
		PBBs	BL		\	\	Comply
		PBDEs			\	\	Comply
46	Black solid w/ silvery edge	Cd	BL	\	\	\	Comply
		Pb	BL		\	\	Comply
		Hg	BL		\	\	Comply
		Cr <sup>6+</sup>	BL		\	\	Comply
		PBBs	BL		\	\	Comply
		PBDEs			\	\	Comply
47	Black solid w/ silvery edge	Cd	BL	\	\	\	Comply
		Pb	BL		\	\	Comply
		Hg	BL		\	\	Comply
		Cr <sup>6+</sup>	BL		\	\	Comply
		PBBs	BL		\	\	Comply
		PBDEs			\	\	Comply
48	Black solid w/ silvery edge	Cd	BL	\	\	\	Comply
		Pb	BL		\	\	Comply
		Hg	BL		\	\	Comply
		Cr <sup>6+</sup>	BL		\	\	Comply
		PBBs	BL		\	\	Comply
		PBDEs			\	\	Comply
49	Black solid w/ silvery edge	Cd	BL	\	\	\	Comply
		Pb	BL		\	\	Comply
		Hg	BL		\	\	Comply
		Cr <sup>6+</sup>	BL		\	\	Comply
		PBBs	BL		\	\	Comply
		PBDEs			\	\	Comply
50	Black solid w/ silvery edge	Cd	BL	\	\	\	Comply
		Pb	BL		\	\	Comply
		Hg	BL		\	\	Comply
		Cr <sup>6+</sup>	BL		\	\	Comply
		PBBs	BL		\	\	Comply
		PBDEs			\	\	Comply





# Verification Report

No.: ESTSZ141202203R

Date: Dec. 05, 2014

Page 14 of 31

Part No.	Part Name	Restricted substances	Results of EDXRF <sup>(1)</sup>	No. of Related Test Report	Results in Related Test Report (mg/kg)	Result of Wet Chemical Testing <sup>(2)</sup> (mg/kg)	Conclusion on RoHS
51	Black solid w/ silvery edge	Cd	BL	\	\	\	Comply
		Pb	BL		\	\	Comply
		Hg	BL		\	\	Comply
		Cr <sup>6+</sup>	BL		\	\	Comply
		PBBs	BL		\	\	Comply
		PBDEs			\	\	Comply
52	Transparent and red body w/ silvery edge (chip diode)	Cd	BL	\	\	\	Comply
		Pb	BL		\	\	Comply
		Hg	BL		\	\	Comply
		Cr <sup>6+</sup>	BL		\	\	Comply
		PBBs	BL		\	\	Comply
		PBDEs			\	\	Comply
53	Black solid w/ silvery edge	Cd	BL	\	\	\	Comply
		Pb	BL		\	\	Comply
		Hg	BL		\	\	Comply
		Cr <sup>6+</sup>	BL		\	\	Comply
		PBBs	BL		\	\	Comply
		PBDEs			\	\	Comply
54	Black solid w/ silvery edge	Cd	BL	\	\	\	Comply
		Pb	BL		\	\	Comply
		Hg	BL		\	\	Comply
		Cr <sup>6+</sup>	BL		\	\	Comply
		PBBs	BL		\	\	Comply
		PBDEs			\	\	Comply
55	Brown solid w/ silvery edge	Cd	BL	\	\	\	Comply
		Pb	BL		\	\	Comply
		Hg	BL		\	\	Comply
		Cr <sup>6+</sup>	BL		\	\	Comply
		PBBs	BL		\	\	Comply
		PBDEs			\	\	Comply
56	Black solid w/ silvery edge	Cd	BL	\	\	\	Comply
		Pb	BL		\	\	Comply
		Hg	BL		\	\	Comply
		Cr <sup>6+</sup>	BL		\	\	Comply
		PBBs	BL		\	\	Comply
		PBDEs			\	\	Comply
57	Black solid w/ silvery edge	Cd	BL	\	\	\	Comply
		Pb	BL		\	\	Comply
		Hg	BL		\	\	Comply
		Cr <sup>6+</sup>	BL		\	\	Comply
		PBBs	BL		\	\	Comply
		PBDEs			\	\	Comply





# Verification Report

No.: ESTSZ141202203R

Date: Dec. 05, 2014

Page 15 of 31

Part No.	Part Name	Restricted substances	Results of EDXRF <sup>(1)</sup>	No. of Related Test Report	Results in Related Test Report (mg/kg)	Result of Wet Chemical Testing <sup>(2)</sup> (mg/kg)	Conclusion on RoHS
58	Green "PCB"	Cd	BL	\	\	\	Comply
		Pb	BL		\	\	Comply
		Hg	BL		\	\	Comply
		Cr <sup>6+</sup>	BL		\	\	Comply
		PBBs	BL		\	\	Comply
		PBDEs			\	\	Comply
59	Black solid w/ silvery edge	Cd	BL	\	\	\	Comply
		Pb	BL		\	\	Comply
		Hg	BL		\	\	Comply
		Cr <sup>6+</sup>	BL		\	\	Comply
		PBBs	BL		\	\	Comply
		PBDEs			\	\	Comply
60	Yellow solid w/ silvery edge	Cd	BL	\	\	\	Comply
		Pb	BL		\	\	Comply
		Hg	BL		\	\	Comply
		Cr <sup>6+</sup>	BL		\	\	Comply
		PBBs	BL		\	\	Comply
		PBDEs			\	\	Comply
61	Red LED grain (mixed)	Cd	BL	\	\	\	Comply
		Pb	BL		\	\	Comply
		Hg	BL		\	\	Comply
		Cr <sup>6+</sup>	BL		\	\	Comply
		PBBs	BL		\	\	Comply
		PBDEs			\	\	Comply
62	Green LED grain (mixed)	Cd	BL	\	\	\	Comply
		Pb	BL		\	\	Comply
		Hg	BL		\	\	Comply
		Cr <sup>6+</sup>	BL		\	\	Comply
		PBBs	BL		\	\	Comply
		PBDEs			\	\	Comply
63-1	White plastic (connector)	Cd	BL	\	\	\	Comply
		Pb	BL		\	\	Comply
		Hg	BL		\	\	Comply
		Cr <sup>6+</sup>	BL		\	\	Comply
		PBBs	BL		\	\	Comply
		PBDEs			\	\	Comply
63-2	Silvery metal pin (in No.63-1)	Cd	BL	\	\	\	Comply
		Pb	BL		\	\	Comply
		Hg	BL		\	\	Comply
		Cr <sup>6+</sup>	BL		\	\	Comply
		PBBs	---		\	\	---
		PBDEs			\	\	---





# Verification Report

No.: ESTSZ141202203R

Date: Dec. 05, 2014

Page 16 of 31

Part No.	Part Name	Restricted substances	Results of EDXRF <sup>(1)</sup>	No. of Related Test Report	Results in Related Test Report (mg/kg)	Result of Wet Chemical Testing <sup>(2)</sup> (mg/kg)	Conclusion on RoHS
64-1	Black plastic base (switch)	Cd	BL	\	\	\	Comply
		Pb	BL		\	\	Comply
		Hg	BL		\	\	Comply
		Cr <sup>6+</sup>	BL		\	\	Comply
		PBBs	BL		\	\	Comply
		PBDEs			\	\	Comply
64-2	Silvery metal sheet (on No. 64-1)	Cd	BL	\	\	\	Comply
		Pb	BL		\	\	Comply
		Hg	BL		\	\	Comply
		Cr <sup>6+</sup>	BL		\	\	Comply
		PBBs	---		\	\	---
		PBDEs			\	\	---
64-3	Spring (in No. 64-1)	Cd	BL	\	\	\	Comply
		Pb	BL		\	\	Comply
		Hg	BL		\	\	Comply
		Cr <sup>6+</sup>	BL		\	\	Comply
		PBBs	---		\	\	---
		PBDEs			\	\	---
64-4	Silvery metal pin (in No. 64-1)	Cd	BL	\	\	\	Comply
		Pb	BL		\	\	Comply
		Hg	BL		\	\	Comply
		Cr <sup>6+</sup>	BL		\	\	Comply
		PBBs	---		\	\	---
		PBDEs			\	\	---
64-5	Black plastic Key (in No. 64-1)	Cd	BL	\	\	\	Comply
		Pb	BL		\	\	Comply
		Hg	BL		\	\	Comply
		Cr <sup>6+</sup>	BL		\	\	Comply
		PBBs	BL		\	\	Comply
		PBDEs			\	\	Comply
65	Black solid w/ silvery edge	Cd	BL	\	\	\	Comply
		Pb	BL		\	\	Comply
		Hg	BL		\	\	Comply
		Cr <sup>6+</sup>	BL		\	\	Comply
		PBBs	BL		\	\	Comply
		PBDEs			\	\	Comply
66	Brown solid w/ silvery edge	Cd	BL	\	\	\	Comply
		Pb	BL		\	\	Comply
		Hg	BL		\	\	Comply
		Cr <sup>6+</sup>	BL		\	\	Comply
		PBBs	BL		\	\	Comply
		PBDEs			\	\	Comply







# Verification Report

No.: ESTSZ141202203R

Date: Dec. 05, 2014

Page 17 of 31

Part No.	Part Name	Restricted substances	Results of EDXRF <sup>(1)</sup>	No. of Related Test Report	Results in Related Test Report (mg/kg)	Result of Wet Chemical Testing <sup>(2)</sup> (mg/kg)	Conclusion on RoHS
67	Green "PCB"	Cd	BL	\	\	\	Comply
		Pb	BL		\	\	Comply
		Hg	BL		\	\	Comply
		Cr <sup>6+</sup>	BL		\	\	Comply
		PBBs	BL		\	\	Comply
		PBDEs			\	\	Comply
68-1	White plastic (connector)	Cd	BL	\	\	\	Comply
		Pb	BL		\	\	Comply
		Hg	BL		\	\	Comply
		Cr <sup>6+</sup>	BL		\	\	Comply
		PBBs	BL		\	\	Comply
		PBDEs			\	\	Comply
68-2	Silvery metal pin (in No.68-1)	Cd	BL	\	\	\	Comply
		Pb	BL		\	\	Comply
		Hg	BL		\	\	Comply
		Cr <sup>6+</sup>	BL		\	\	Comply
		PBBs	---		\	\	---
		PBDEs			\	\	---
69-1	Black plastic holder (Fan)	Cd	BL	\	\	\	Comply
		Pb	BL		\	\	Comply
		Hg	BL		\	\	Comply
		Cr <sup>6+</sup>	BL		\	\	Comply
		PBBs	IN		\	N.D.	Comply
		PBDEs			\	N.D.	Comply
69-2	PCB (in No. 69-1)	Cd	BL	\	\	\	Comply
		Pb	BL		\	\	Comply
		Hg	BL		\	\	Comply
		Cr <sup>6+</sup>	BL		\	\	Comply
		PBBs	BL		\	\	Comply
		PBDEs			\	\	Comply
69-3	Motor (mixed) (in No. 69-1)	Cd	BL	\	\	\	Comply
		Pb	BL		\	\	Comply
		Hg	BL		\	\	Comply
		Cr <sup>6+</sup>	BL		\	\	Comply
		PBBs	BL		\	\	Comply
		PBDEs			\	\	Comply
69-4	Black plastic fan (in No. 69-1)	Cd	BL	\	\	\	Comply
		Pb	BL		\	\	Comply
		Hg	BL		\	\	Comply
		Cr <sup>6+</sup>	BL		\	\	Comply
		PBBs	IN		\	N.D.	Comply
		PBDEs			\	N.D.	Comply





# Verification Report

No.: ESTSZ141202203R

Date: Dec. 05, 2014

Page 18 of 31

Part No.	Part Name	Restricted substances	Results of EDXRF <sup>(1)</sup>	No. of Related Test Report	Results in Related Test Report (mg/kg)	Result of Wet Chemical Testing <sup>(2)</sup> (mg/kg)	Conclusion on RoHS
69-5	Silvery adhesive plastic w/ mult-color printing (in No. 69-1)	Cd	BL	\	\	\	Comply
		Pb	BL		\	\	Comply
		Hg	BL		\	\	Comply
		Cr <sup>6+</sup>	BL		\	\	Comply
		PBBs	BL		\	\	Comply
		PBDEs			\	\	Comply
70-1	Grey plastic and black printing w/ coppery wire (mixed)	Cd	BL	\	\	\	Comply
		Pb	BL		\	\	Comply
		Hg	BL		\	\	Comply
		Cr <sup>6+</sup>	BL		\	\	Comply
		PBBs	BL		\	\	Comply
		PBDEs			\	\	Comply
70-2	Black plastic (connector)	Cd	BL	\	\	\	Comply
		Pb	BL		\	\	Comply
		Hg	BL		\	\	Comply
		Cr <sup>6+</sup>	BL		\	\	Comply
		PBBs	BL		\	\	Comply
		PBDEs			\	\	Comply
70-3	Silvery metal pin (in No. 70-2)	Cd	BL	\	\	\	Comply
		Pb	BL		\	\	Comply
		Hg	BL		\	\	Comply
		Cr <sup>6+</sup>	IN		\	Negative	Comply
		PBBs	---		\	\	---
		PBDEs			\	\	---
71-1	Black plastic w/ silvery metal pin (mixed)	Cd	BL	\	\	\	Comply
		Pb	BL		\	\	Comply
		Hg	BL		\	\	Comply
		Cr <sup>6+</sup>	BL		\	\	Comply
		PBBs	BL		\	\	Comply
		PBDEs			\	\	Comply
71-2	Red plastic w/ coppery wire (mixed)	Cd	BL	\	\	\	Comply
		Pb	BL		\	\	Comply
		Hg	BL		\	\	Comply
		Cr <sup>6+</sup>	BL		\	\	Comply
		PBBs	BL		\	\	Comply
		PBDEs			\	\	Comply
72-1	White plastic and red printing w/ coppery wire (mixed)	Cd	BL	\	\	\	Comply
		Pb	BL		\	\	Comply
		Hg	BL		\	\	Comply
		Cr <sup>6+</sup>	BL		\	\	Comply
		PBBs	BL		\	\	Comply
		PBDEs			\	\	Comply





# Verification Report

No.: ESTSZ141202203R

Date: Dec. 05, 2014

Page 19 of 31

Part No.	Part Name	Restricted substances	Results of EDXRF <sup>(1)</sup>	No. of Related Test Report	Results in Related Test Report (mg/kg)	Result of Wet Chemical Testing <sup>(2)</sup> (mg/kg)	Conclusion on RoHS
72-2	White plastic (connector)	Cd	BL	\	\	\	Comply
		Pb	BL		\	\	Comply
		Hg	BL		\	\	Comply
		Cr <sup>6+</sup>	BL		\	\	Comply
		PBBs	BL		\	\	Comply
		PBDEs			\	\	Comply
72-3	Silvery metal pin (in No. 72-2)	Cd	BL	\	\	\	Comply
		Pb	BL		\	\	Comply
		Hg	BL		\	\	Comply
		Cr <sup>6+</sup>	IN		\	Negative	Comply
		PBBs	---		\	\	---
		PBDEs			\	\	---
73-1	Black plastic w/ silvery metal pin (mixed)	Cd	BL	\	\	\	Comply
		Pb	BL		\	\	Comply
		Hg	BL		\	\	Comply
		Cr <sup>6+</sup>	BL		\	\	Comply
		PBBs	IN		\	N.D.	Comply
		PBDEs			\	N.D.	Comply
73-2	Yellow plastic w/ copper wire (mixed)	Cd	BL	\	\	\	Comply
		Pb	BL		\	\	Comply
		Hg	BL		\	\	Comply
		Cr <sup>6+</sup>	BL		\	\	Comply
		PBBs	BL		\	\	Comply
		PBDEs			\	\	Comply
73-3	Black plastic w/ copper wire (mixed)	Cd	BL	\	\	\	Comply
		Pb	BL		\	\	Comply
		Hg	BL		\	\	Comply
		Cr <sup>6+</sup>	BL		\	\	Comply
		PBBs	BL		\	\	Comply
		PBDEs			\	\	Comply
73-4	Red plastic w/ copper wire (mixed)	Cd	BL	\	\	\	Comply
		Pb	BL		\	\	Comply
		Hg	BL		\	\	Comply
		Cr <sup>6+</sup>	BL		\	\	Comply
		PBBs	BL		\	\	Comply
		PBDEs			\	\	Comply
73-5	White plastic (connector)	Cd	BL	\	\	\	Comply
		Pb	BL		\	\	Comply
		Hg	BL		\	\	Comply
		Cr <sup>6+</sup>	BL		\	\	Comply
		PBBs	BL		\	\	Comply
		PBDEs			\	\	Comply





# Verification Report

No.: ESTSZ141202203R

Date: Dec. 05, 2014

Page 20 of 31

Part No.	Part Name	Restricted substances	Results of EDXRF <sup>(1)</sup>	No. of Related Test Report	Results in Related Test Report (mg/kg)	Result of Wet Chemical Testing <sup>(2)</sup> (mg/kg)	Conclusion on RoHS
73-6	Silvery metal pin (in No. 73-5)	Cd	BL	\	\	\	Comply
		Pb	BL		\	\	Comply
		Hg	BL		\	\	Comply
		Cr <sup>6+</sup>	BL		\	\	Comply
		PBBs	---		\	\	---
		PBDEs	---		\	\	---
74-1	White plastic (connector)	Cd	BL	\	\	\	Comply
		Pb	BL		\	\	Comply
		Hg	BL		\	\	Comply
		Cr <sup>6+</sup>	BL		\	\	Comply
		PBBs	BL		\	\	Comply
		PBDEs			\	\	Comply
74-2	Silvery metal pin (in No. 74-1)	Cd	BL	\	\	\	Comply
		Pb	BL		\	\	Comply
		Hg	BL		\	\	Comply
		Cr <sup>6+</sup>	BL		\	\	Comply
		PBBs	---		\	\	---
		PBDEs	---		\	\	---
74-3	Grey plastic and black printing w/ coppery wire (mixed)	Cd	BL	\	\	\	Comply
		Pb	BL		\	\	Comply
		Hg	BL		\	\	Comply
		Cr <sup>6+</sup>	BL		\	\	Comply
		PBBs	BL		\	\	Comply
		PBDEs			\	\	Comply
75-1	Black plastic w/ silvery metal pin (mixed)	Cd	BL	\	\	\	Comply
		Pb	BL		\	\	Comply
		Hg	BL		\	\	Comply
		Cr <sup>6+</sup>	BL		\	\	Comply
		PBBs	BL		\	\	Comply
		PBDEs			\	\	Comply
75-2	Red plastic w/ coppery wire (mixed)	Cd	BL	\	\	\	Comply
		Pb	BL		\	\	Comply
		Hg	BL		\	\	Comply
		Cr <sup>6+</sup>	BL		\	\	Comply
		PBBs	BL		\	\	Comply
		PBDEs			\	\	Comply
76	Silvery metal screw	Cd	BL	\	\	\	Comply
		Pb	BL		\	\	Comply
		Hg	BL		\	\	Comply
		Cr <sup>6+</sup>	IN		\	Negative	Comply
		PBBs	---		\	\	---
		PBDEs	---		\	\	---





# Verification Report

No.: ESTSZ141202203R

Date: Dec. 05, 2014

Page 21 of 31

Part No.	Part Name	Restricted substances	Results of EDXRF <sup>(1)</sup>	No. of Related Test Report	Results in Related Test Report (mg/kg)	Result of Wet Chemical Testing <sup>(2)</sup> (mg/kg)	Conclusion on RoHS
77	Silvery metal screw	Cd	BL	\	\	\	Comply
		Pb	BL		\	\	Comply
		Hg	BL		\	\	Comply
		Cr <sup>6+</sup>	IN		\	Negative	Comply
		PBBs	---		\	\	---
		PBDEs	---		\	\	---
78	White plastic	Cd	BL	\	\	\	Comply
		Pb	BL		\	\	Comply
		Hg	BL		\	\	Comply
		Cr <sup>6+</sup>	BL		\	\	Comply
		PBBs	BL		\	\	Comply
		PBDEs	BL		\	\	Comply
79	Black metal screw	Cd	BL	\	\	\	Comply
		Pb	BL		\	\	Comply
		Hg	BL		\	\	Comply
		Cr <sup>6+</sup>	IN		\	Negative	Comply
		PBBs	---		\	\	---
		PBDEs	---		\	\	---
80-1	Silvery metal screw	Cd	BL	\	\	\	Comply
		Pb	BL		\	\	Comply
		Hg	BL		\	\	Comply
		Cr <sup>6+</sup>	IN		\	Negative	Comply
		PBBs	---		\	\	---
		PBDEs	---		\	\	---
80-2	Black metal nut	Cd	BL	\	\	\	Comply
		Pb	BL		\	\	Comply
		Hg	BL		\	\	Comply
		Cr <sup>6+</sup>	IN		\	Negative	Comply
		PBBs	---		\	\	---
		PBDEs	---		\	\	---
81	Silvery metal screw	Cd	BL	\	\	\	Comply
		Pb	BL		\	\	Comply
		Hg	BL		\	\	Comply
		Cr <sup>6+</sup>	IN		\	Negative	Comply
		PBBs	---		\	\	---
		PBDEs	---		\	\	---





REMARK:

- (1) (a) It is the result on total Br while test item on restricted substances is PBBs/PBDEs. It is the result on total Cr while test item on restricted substances is Cr6+.
- (b) Results are obtained by EDXRF for primary screening, and further chemical testing by ICP (for Cd, Pb, Hg), UV-VIS (for CrVI) and GCMSD (for PBBs, PBDEs) is recommended to be performed, if the concentration exceeds the below warning value according to IEC 62321:2008 (unit: mg/kg)

Element	Polymer	Metal	Composite Materials
Cd	$BL \leq (70-3\sigma) < X < (130+3\sigma) \leq OL$	$BL \leq (70-3\sigma) < X < (130+3\sigma) \leq OL$	$LOD < X < (150+3\sigma) \leq OL$
Pb	$BL \leq (700-3\sigma) < X < (1300+3\sigma) \leq OL$	$BL \leq (700-3\sigma) < X < (1300+3\sigma) \leq OL$	$BL \leq 500-3\sigma < X < (1500+3\sigma) \leq OL$
Hg	$BL \leq (700-3\sigma) < X < (1300+3\sigma) \leq OL$	$BL \leq (700-3\sigma) < X < (1300+3\sigma) \leq OL$	$BL \leq 500-3\sigma < X < (1500+3\sigma) \leq OL$
Br	$BL \leq (300-3\sigma) < X$	---	$BL < X < (250-3\sigma) \leq X$
Cr	$BL \leq (700-3\sigma) < X$	$BL \leq (700-3\sigma) < X$	$BL < X < (500-3\sigma) \leq X$

- (c) OL = Over Limit, BL = Below Limit, IN = Inconclusive, LOD = Limit of Detection
- (d) The XRF screening test for RoHS elements – The reading may be different to the actual content in the sample be of non-uniformity composition

- (2) (a) mg/kg = ppm=0.0001%, N.D. = not detected (<MDL), --- = not conducted.
- (b) Unit and Method Detection Limit (MDL) in wet chemical test

Test Items	Pb	Cd	Hg
Units	mg/kg	mg/kg	mg/kg
MDL	2	2	2

The MDL for single compound of PBBs & PBDEs is 5 mg/kg and MDL of Cr6+ for polymer & composite sample is 2 mg/kg.

- (c) According to IEC 62321:2008, result on Cr<sup>6+</sup> for metal sample is shown as Positive/Negative. Negative= Absence of Cr<sup>6+</sup> coating, Positive = Presence of Cr<sup>6+</sup> coating.  
Storage conditions and production date of the tested sample are unavailable and thus results of Cr(VI) represent status of the sample at the time of testing.



DESCRIPTION OF PHOTO:

ESTSZ141202203R



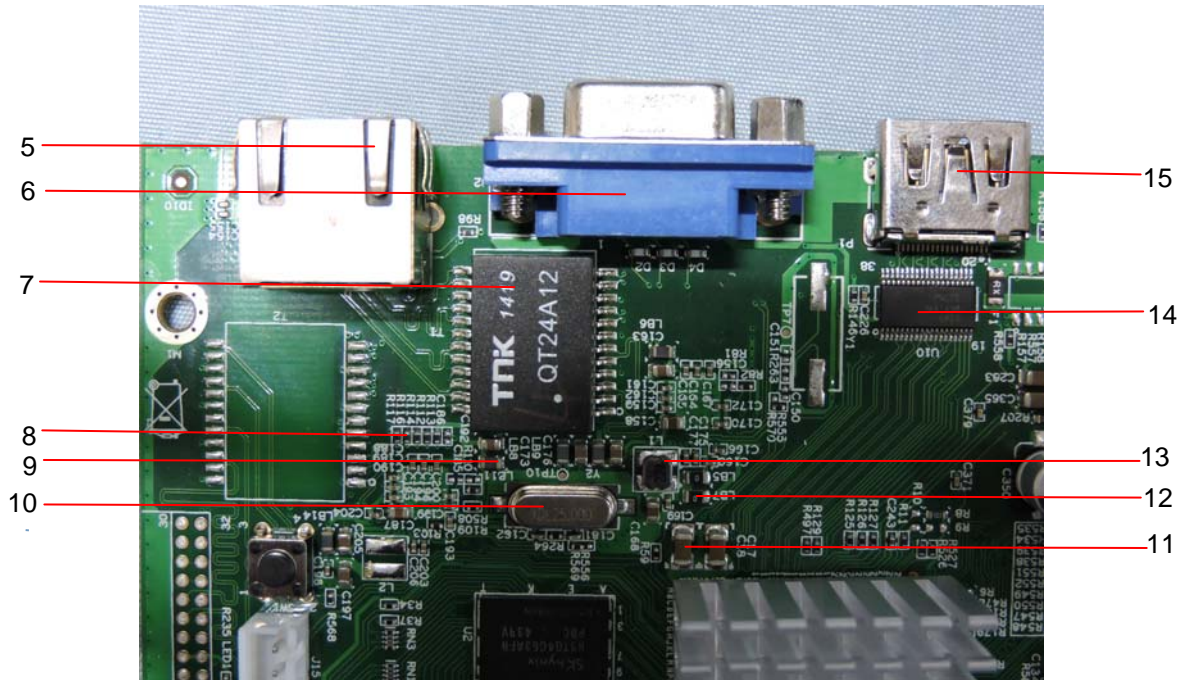
NETWORK VIDEO RECORDER

ESTSZ141202203R

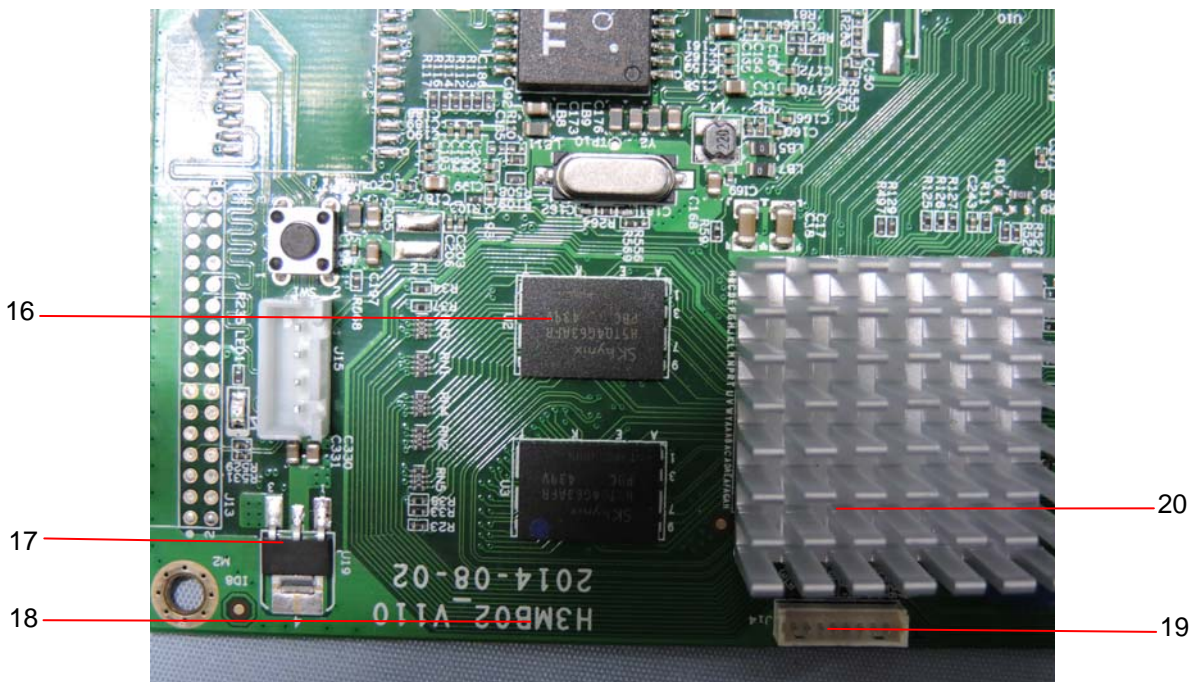




ESTSZ141202203R

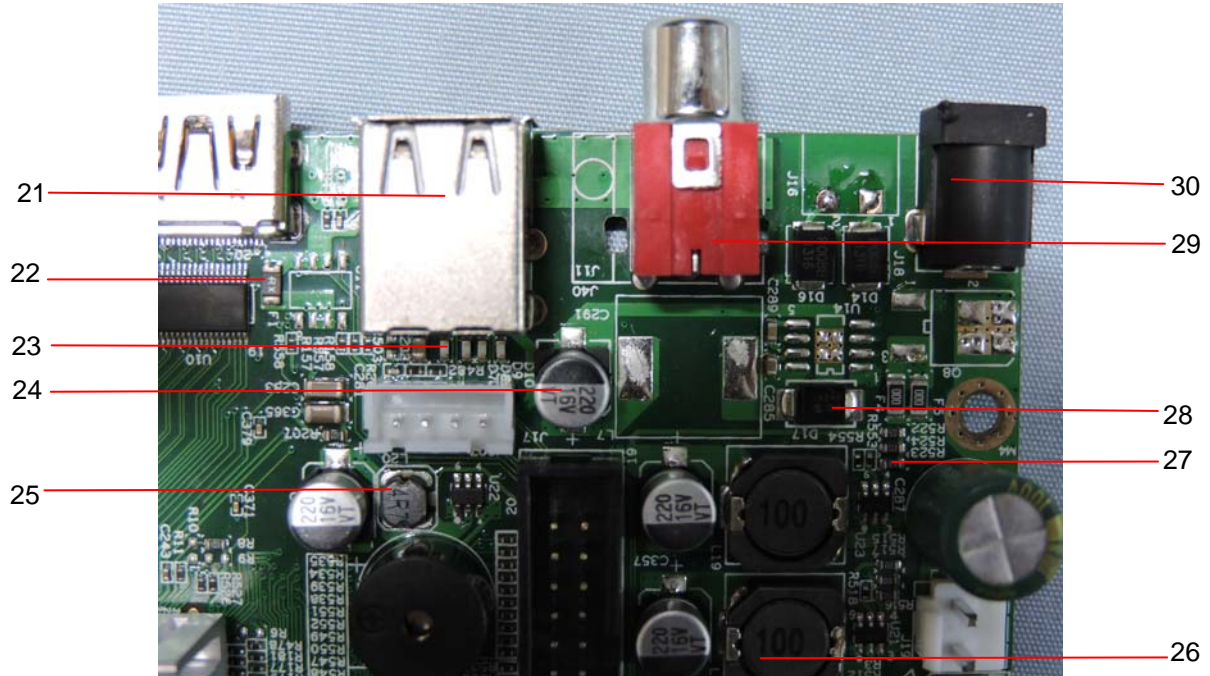


ESTSZ141202203R

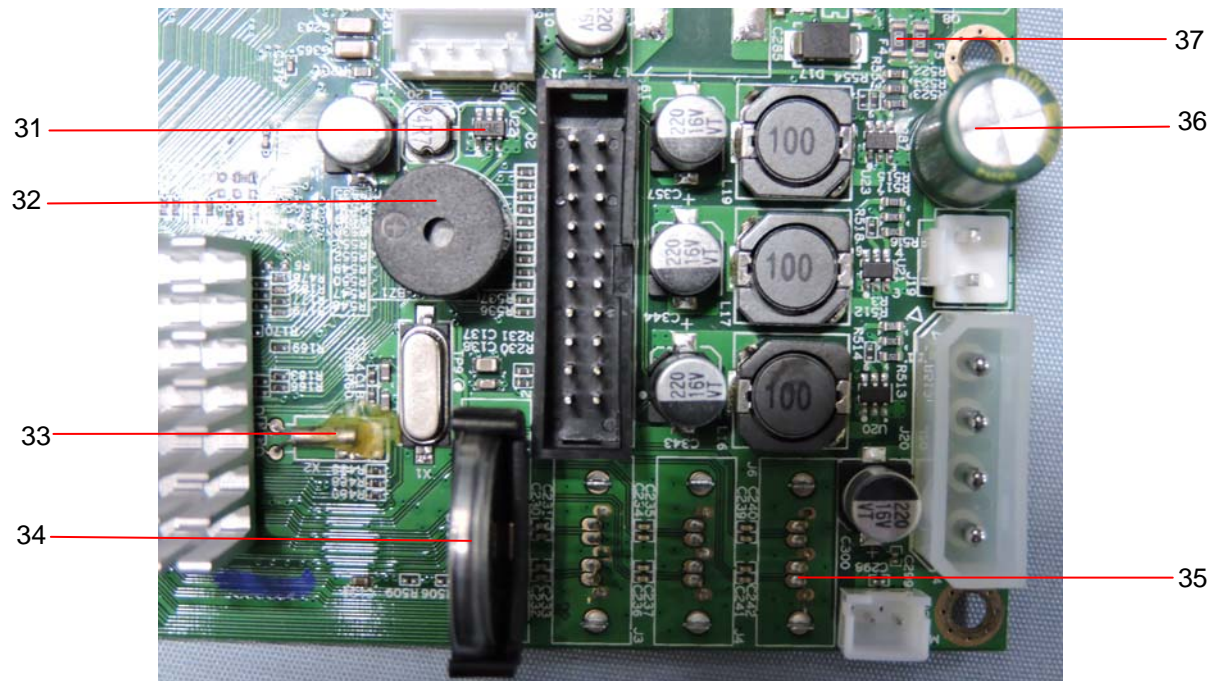


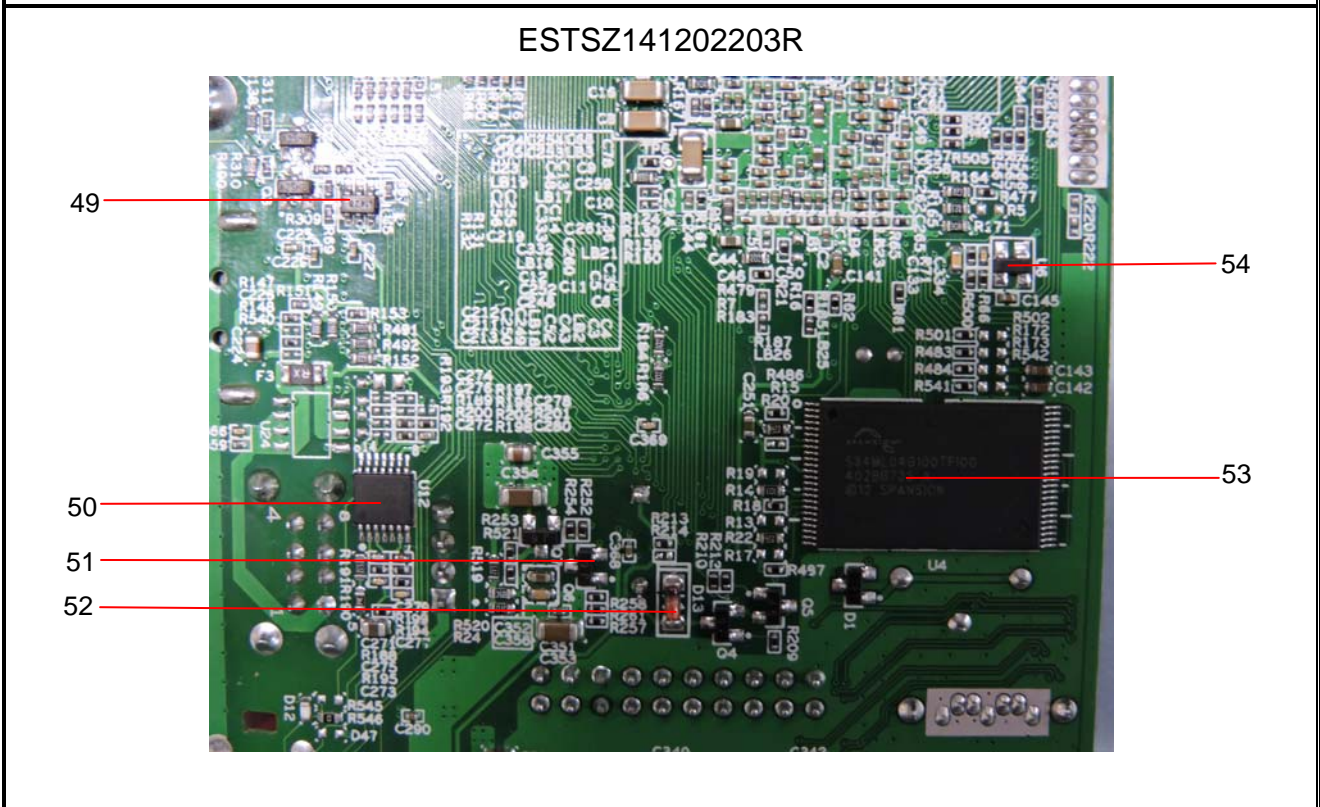
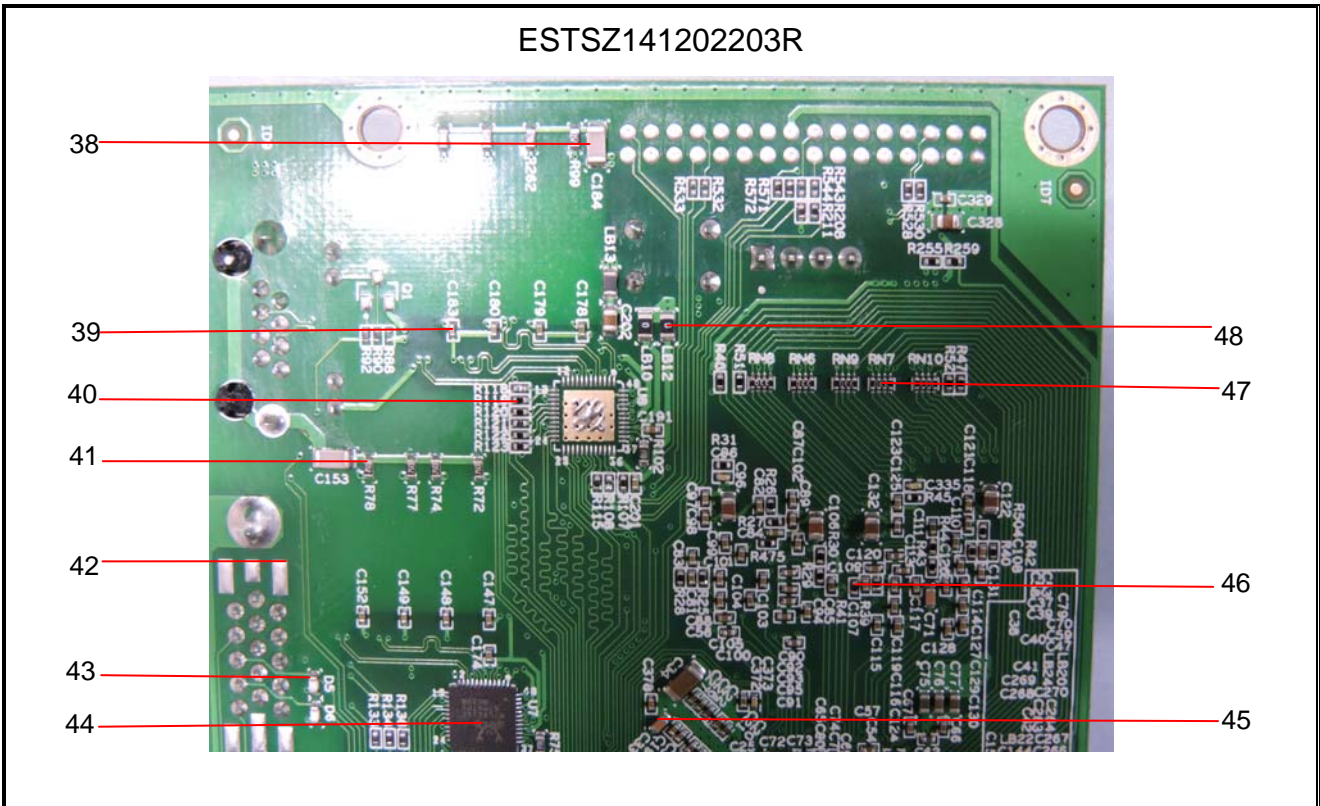


ESTSZ141202203R



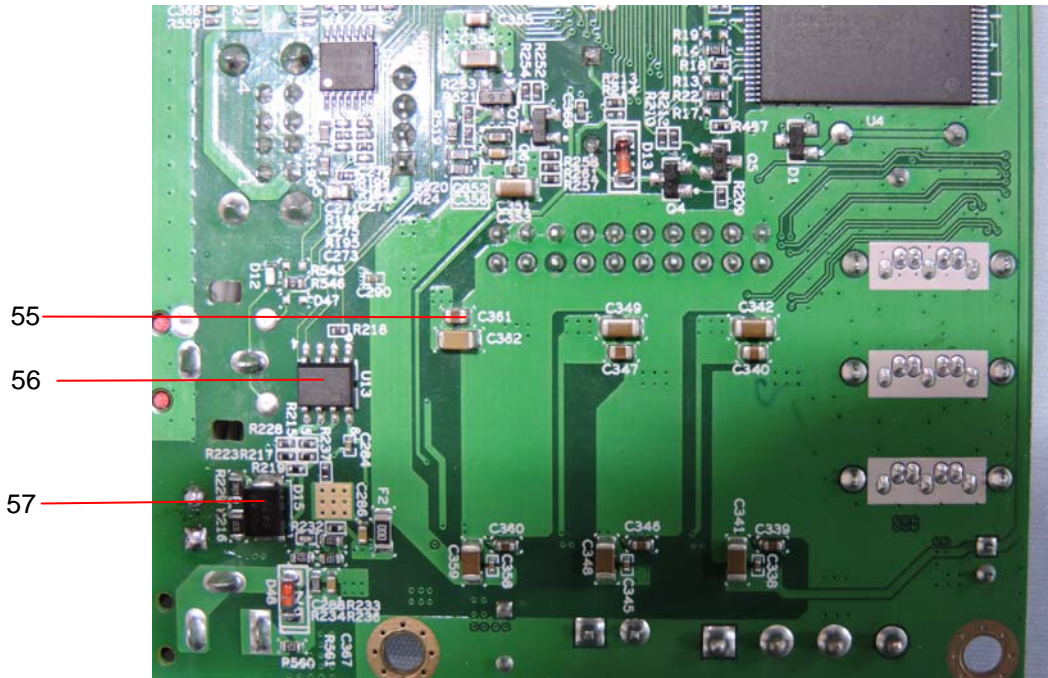
ESTSZ141202203R



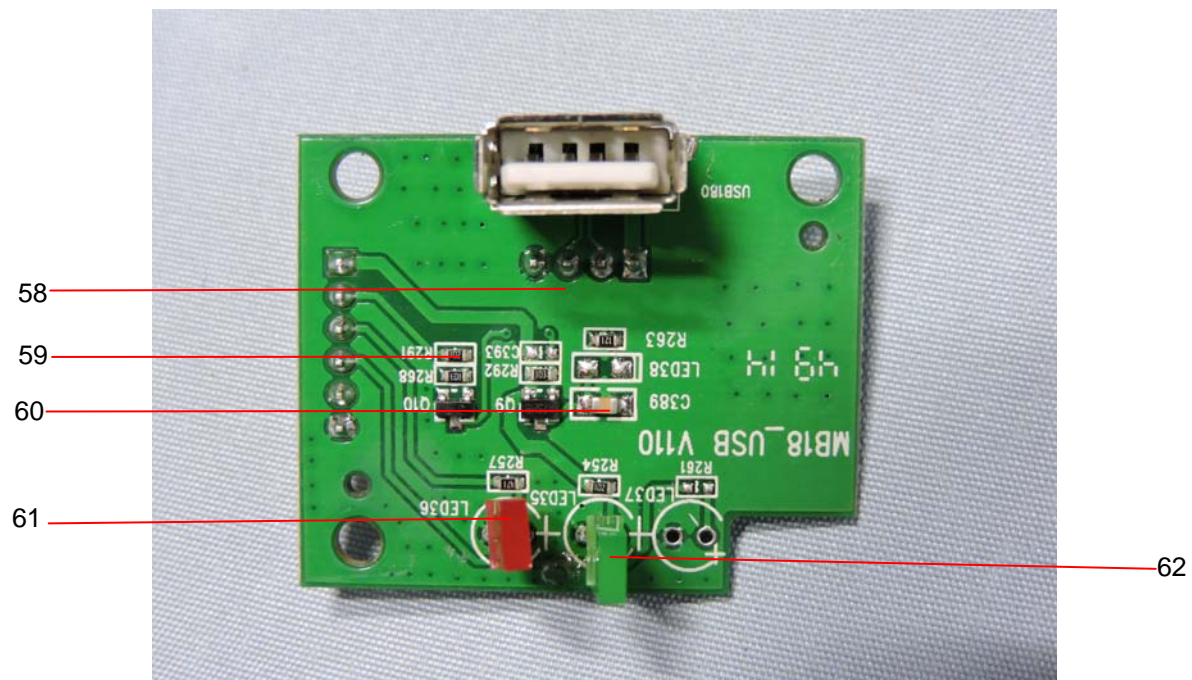




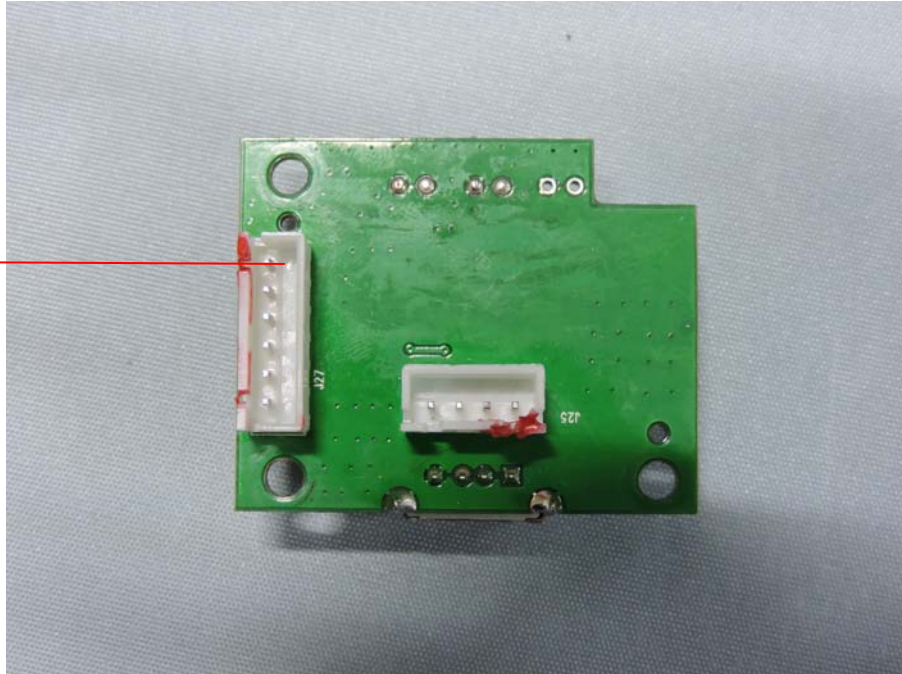
ESTSZ141202203R



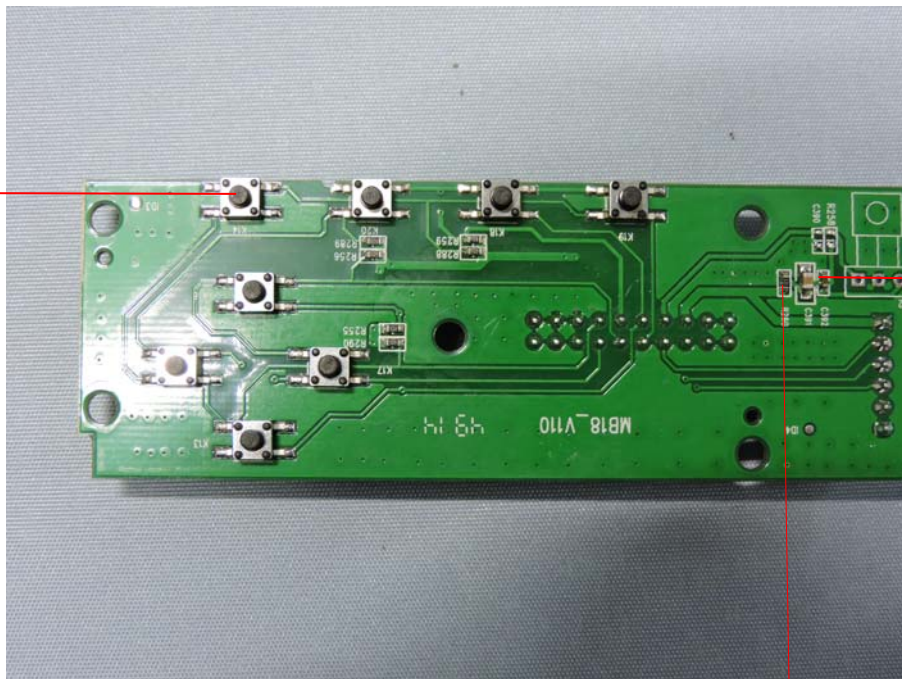
ESTSZ141202203R



ESTSZ141202203R



ESTSZ141202203R



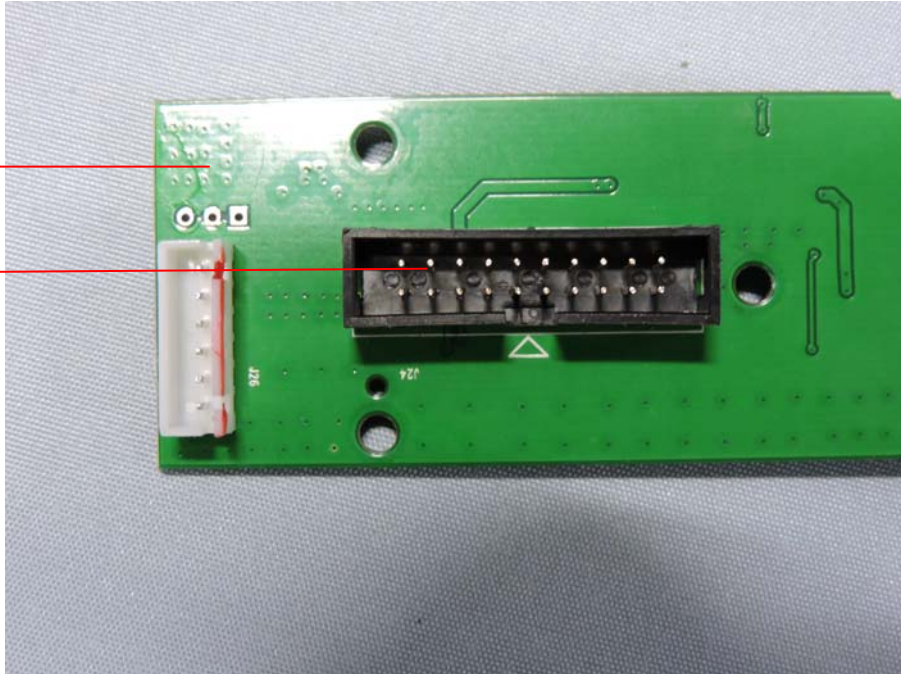
65



ESTSZ141202203R

67

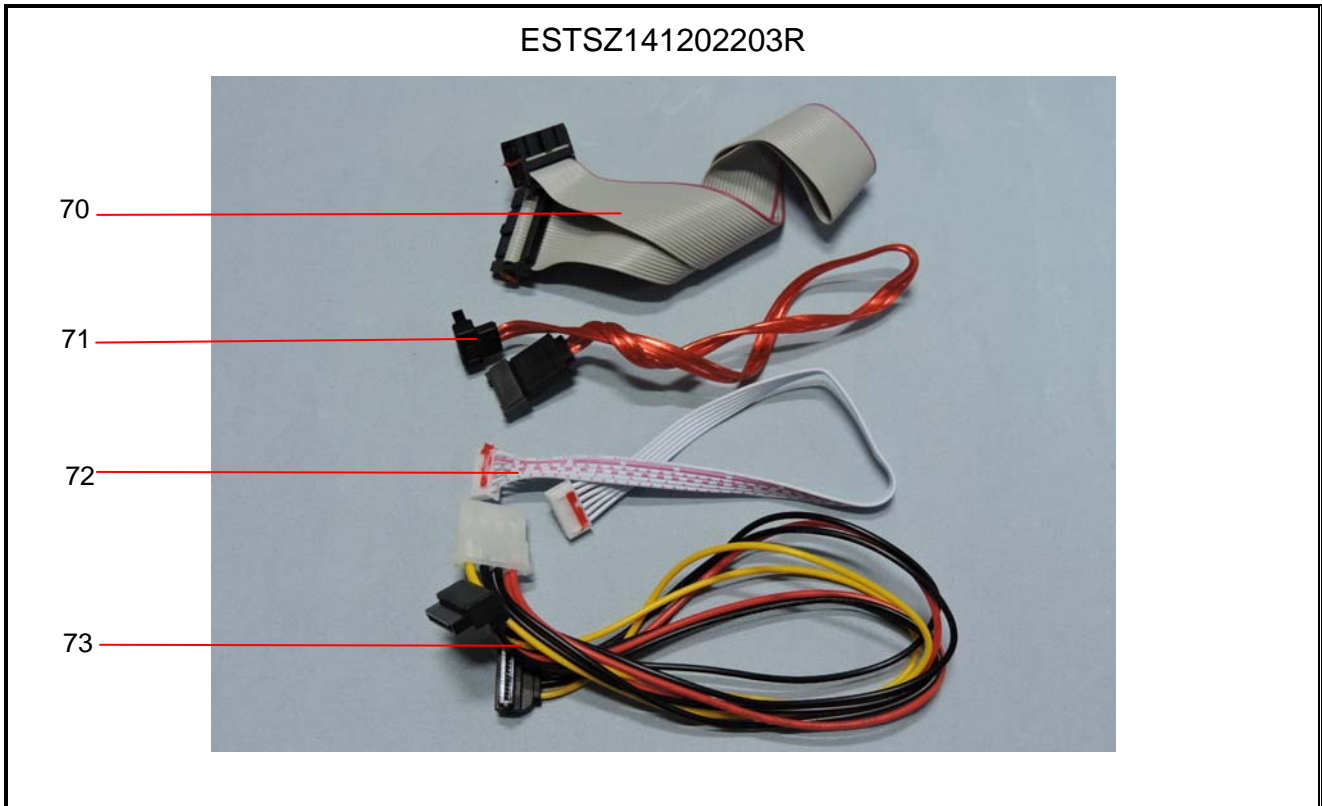
68



ESTSZ141202203R

69







EST authenticate the photo on original report only

\*\*\*\* End of Report \*\*\*\*