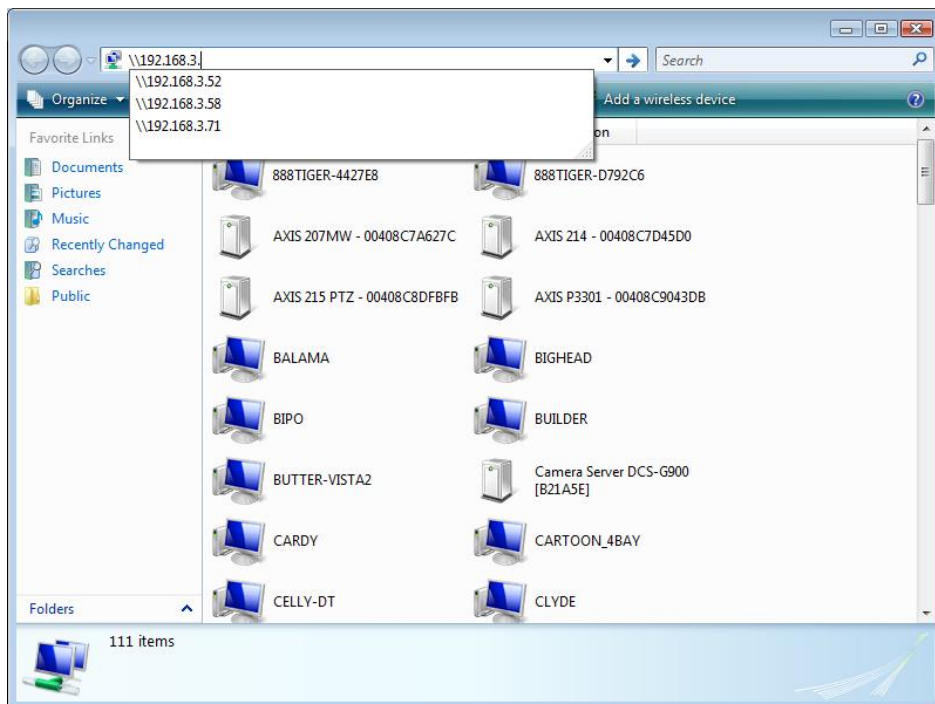
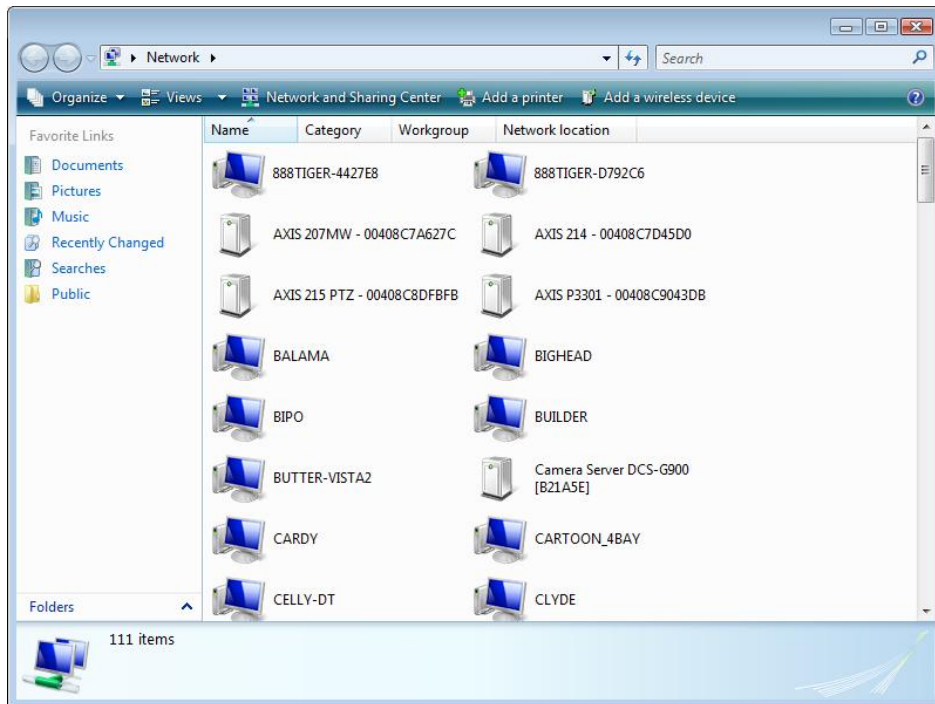


## ***Firmware Upgrade Function***

1. Find your unit through Windows Explorer (insert “\” plus the IP address of your unit).

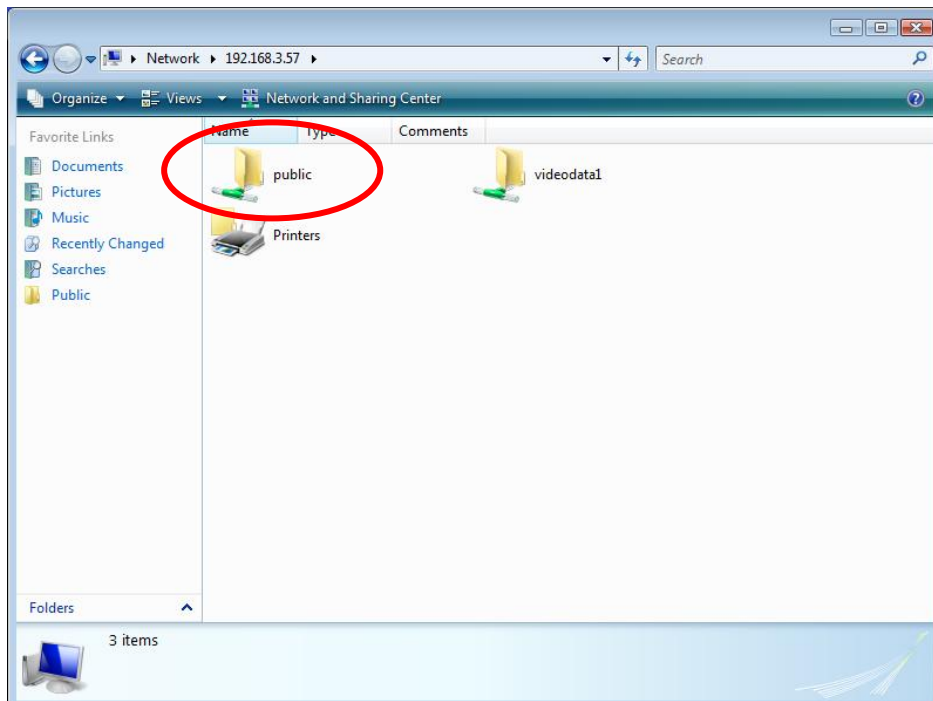


2. Use the administrator's ID and password to login. (Default ID: admin;

default password: admin)

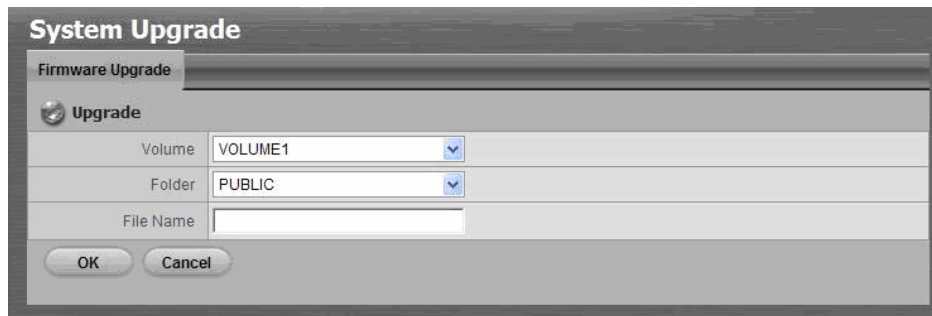


3. If you are upgrading from v1.0 to v1.3. Put the update file (nv2040\_OS010409\_1.2.1247.upg & nv2040\_OS010501\_1.3.1459.upg) into the folder “public” in your unit.



4. Open Internet Explorer and login the unit.
5. Click **System/ System Upgrade**.

6. Click the **Firmware Upgrade** tab.



7. Choose the volume.
8. Choose the folder "public".
9. Insert the entire file name "**nv2040\_OS010409\_1.2.1247.upg**".
10. Click the **OK** button.
11. The system will begin the upgrade process.
12. After upgrade, the system will reboot. You need to re-access the unit again.
13. Open Internet Explorer and login the unit again.
14. Click **System/ System Upgrade**.
15. Click the **Firmware Upgrade** tab.
16. Choose the volume.
17. Choose the folder "public".
18. Insert the entire file name "**nv2040\_OS010501\_1.3.1459.upg**".
19. Click the **OK** button.
20. The system will begin the upgrade process.
21. After upgrade, the system will reboot. The process of upgrading NVRmini v1.3 is done.