

NV-4080 Upgrade Principle:

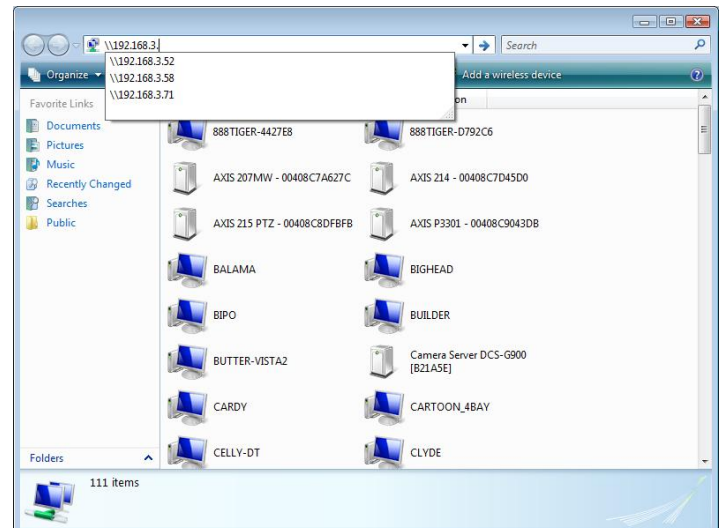
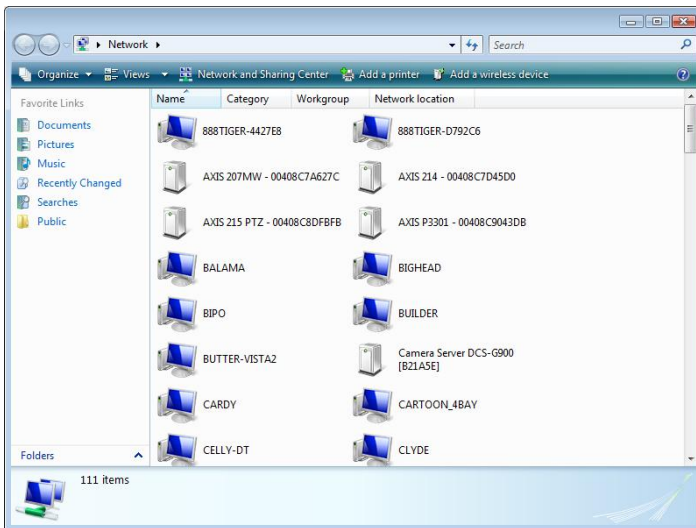
Upgrade FW Version \ Current FW Version	V1.2	V1.3	V2.0
V1.0	V	V (Upgrade to v1.2 first)	V (Upgrade to v1.2 first)
V1.2	-	V	V
V1.3	-	-	V

Remark: Before upgrading to v1.3/v2.0, please make sure your current FW version has been upgraded to v1.2.

Example:

The following is the example of upgrading from **v1.0 to v2.0**.

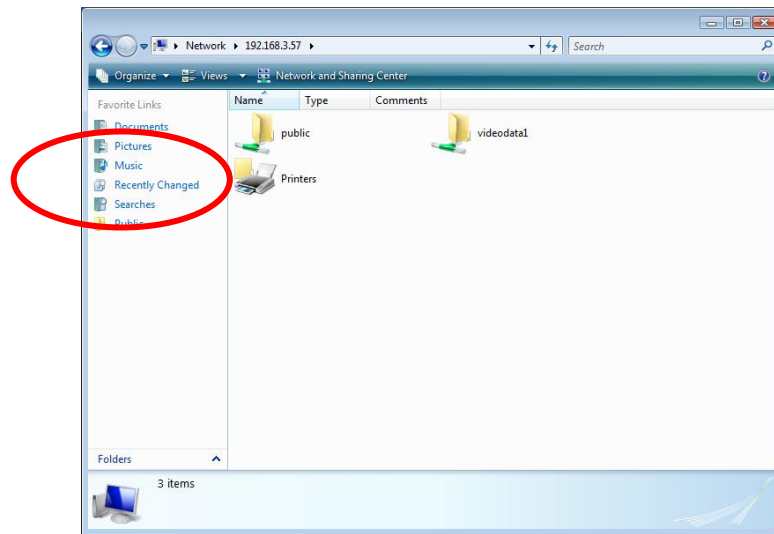
1. Find your unit through Windows Explorer (insert “\” plus the IP address of your unit).



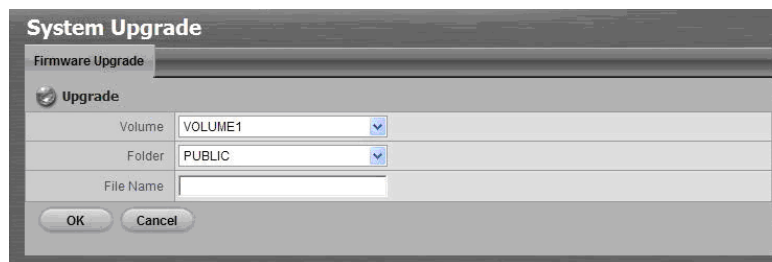
2. Use the administrator’s ID and password to login. (Default ID: admin; default password: admin)



- Put the update file (**nv4080_OS010407_1.2.1247_MD.upg** & **nv4080_OS010506p1_2.0.1825.upg**) into the folder “public” in your unit.



- Open Internet Explorer and login the unit.
- Click **System/ System Upgrade**.
- Click the **Firmware Upgrade** tab.



- Choose the volume.
- Choose the folder “public”.
- Insert the entire file name “**nv4080_OS010407_1.2.1247_MD.upg**”.
- Click the **OK** button.
- The system will begin the upgrade process.
- After upgrade, the system will reboot. You need to re-access the unit again.
- Open Internet Explorer and login the unit again.
- Click **System/ System Upgrade**.
- Click the **Firmware Upgrade** tab.
- Choose the volume.
- Choose the folder “public”.
- Insert the entire file name “**nv4080_OS010506p1_2.0.1825.upg**”.
- Click the **OK** button.
- The system will begin the upgrade process.
- After upgrade, the system will reboot. The process of upgrading NVRmini v2.0 is done.